 HYUNDAI NEW THINKING. NEW POSSIBILITIES. Technical Service Bulletin	GROUP	NUMBER
	CAMPAIGN	16-01-006-2
	DATE	MODEL(S)
	APRIL 2016	2015 GENESIS SEDAN (DH)
SUBJECT: 2015MY GENESIS SEDAN (DH) TIRE REPLACEMENT (RECALL 138)		

THIS TSB REVISION INCLUDES INSTRUCTIONS ON PROVIDING TIRE WARRANTY BROCHURES TO CUSTOMERS FOLLOWING COMPLETION OF TIRE REPLACEMENT.

* IMPORTANT	<p align="center">*** Retailed Vehicles ***</p> <p>Dealers should perform all open recalls on all vehicles prior to placing them into customer use and whenever an affected vehicle is in the shop for any maintenance or repair.</p> <p>When a vehicle arrives at the service department, access Hyundai Motor America’s “Warranty Vehicle Information” screen via WEBDCS to identify open Campaigns.</p>
--------------------	---

Description: On certain 2015MY Genesis sedan (DH) vehicles the original equipment tires (Hankook Ventus S1 Noble 2) may exhibit uneven tread wear; and/or cracks along the sidewall(s). The cracks in the sidewall of a tire could result in air loss and a loss of vehicle control, increasing the risk of a vehicle crash.

This bulletin describes the service procedure to replace the Hankook brand tires with 18” Michelin tires or 19” Continental tires. Vehicles equipped with 18” tires require a software update which changes the Engine Control Module’s speed governor from 149 to 130 mph to accommodate the tire speed rating change from W for the Hankook tires to V for the Michelins.



18” Michelin Primacy MXM4



19” Continental ProContact TX

Circulate To: General Manager, Service Manager, Parts Manager, Warranty Manager, Service Advisors, Technicians, Body Shop Manager, Fleet Repair

NOTICE

Please see Dealer Tire document for ordering and scrapping procedures.

IMPORTANT

- The RFV measurements **MUST** be recorded on the worksheet at the end of this TSB.
- The completed worksheet **MUST** be stapled to the RO print out and kept with dealer records.
- The completed worksheet **MUST** also be scanned or have a picture taken and emailed to: recall138@hmausa.com
 - Please note that this is the same address where the scrapped tire pictures are sent. **All required images MUST be sent in a single email.**
- Claims received without the proper documents (scanned scrapped picture and RFV measurement form) are subject to debit.



- **Upon completion of replacing any tires with the Michelin or Continental tires described in this TSB, the customer must be provided with the applicable tire warranty brochure (Michelin or Continental).**

These brochures are provided to the dealer, and are also available online:

Michelin:

https://media.michelinman.com/content/dam/master/Michelin/pdf/MX_OE_Eng_MDW40307_03-11-pdf_1-0.pdf

Continental:

http://www.continentaltire.com/sites/default/files/36245_New_8-18-14.pdf

Applicable Vehicles: Certain 2015MY Genesis sedan (DH) vehicles.

Parts Information For Ordering:

Wheel Size	Part Name	Dealer Tire Part Number	Qty.***
18"	Michelin Tire 245/45R18	52931B1390DT	1, 2, 3, or 4
19"	Continental Tire 245/40R19 (Front)	52931B1690DT	1 or 2
	Continental Tire 275/35R19 (Rear)	52931B1890DT	1 or 2

***Quantity is dictated by the number of Hankook tires that require replacement.

Warranty Information:

Model	Op. Code	Operation	Op. Time
All DH	51C014I0	Tire Inspection Only (All 4 Tires Already Replaced)	0.1
Genesis (DH) 3.8L V6 18" Wheels	51C014R0	Inspect and Replace All 4 Tires and ECU Upgrade - 18" Michelin	1.3
	51C014R2	Inspect and Replace 3 Tires – 18" Michelin (ECU Upgrade Previously Performed)	0.9
	51C014R3	Inspect and Replace 2 Tires – 18" Michelin (ECU Upgrade Previously Performed)	0.6
	51C014R4	Inspect and Replace 1 Tire – 18" Michelin (ECU Upgrade Previously Performed)	0.3
Genesis (DH) 5.0L V8 19" Wheels	51C014R1	Inspect and Replace All 4 Tires – 19" Continental	1.1
	51C014R5	Inspect and Replace 1 Front Tire – 19" Continental	0.3
	51C014R6	Inspect and Replace 1 Rear Tire – 19" Continental	0.3
	51C014R7	Inspect and Replace 2 Front Tires – 19" Continental	0.6
	51C014R8	Inspect and Replace 2 Rear Tires – 19" Continental	0.6
	51C014RA	Inspect and Replace 1 Front / 1 Rear Tire – 19" Continental	0.6
	51C014RB	Inspect and Replace 1 Front / 2 Rear Tires – 19" Continental	0.9
	51C014RC	Inspect and Replace 2 Front / 1 Rear Tire – 19" Continental	0.9

NOTE 1: Submit Claim on Campaign Claim Entry Screen

NOTE 2: Each campaign claim includes applicable "sublet amount" as follows:

- \$10 per tire for handling processing
- \$2 per tire for scrapping tire
- Applicable tire cost

NOTE 3: If a part is found in need of replacement while performing Recall 138 and the affected part is still under warranty, submit a separate warranty claim using the same Repair Order. If the affected part is out of warranty submit a Prior Approval Request for goodwill consideration prior to performing the work.

Scrapped Tire and Tire Data Sheet Email Submission Procedures (Not required for inspection only):

1. **Tire Data Sheet:** Make a scanned copy or take a picture of the completed worksheet. Review the scan or picture to make sure the writing is clear and legible.

2. **Scrap Procedure:**
 - Drill a hole into the sidewall of each tire next to the DOT number. This hole must be made using a uni-bit until the bit goes completely through the tire.
 - Arrange all replaced tires from the same vehicle so that the DOT number and the newly drilled holes are visible for all replaced tires.
 - In large and legible writing, write the RO and/or VIN number on a piece of paper, and place the paper in the center of the arranged tire(s). See example photo below.
 - Take a photo of the arranged tire(s) and paper and review the photo to make sure that the DOT number, the newly drilled hole(s), and the RO and/or VIN number are clearly visible for all tire(s). See example photo below.

Example photo of scrapped tires and RO/VIN number



3. **Email Submission:**
- Create an email with a subject title in the following format:
 - [Dealer code] [Last 8 digits of the VIN number]
 - Example: “**CA514 FU016345**”
 - In the body of the email, enter the full VIN and Repair Order Number.
 - Attach the photo/scan of the Tire Data Sheet, and the photo of the scrapped tire(s).
 - Send the email to recall138@hmausa.com

Service Procedure: Tire Inspection

1. Visually check the brand and model of all 4 tires currently installed on the vehicle. *If any of the tires are the originally-equipped Hankook tires*, replace them using the applicable tire(s) below.
- **3.8L V6 Genesis vehicles:** 18” Michelin Primacy MXM4 245/45R18
 - **5.0L V8 Genesis vehicles:** 19” Continental ProContact TX 245/40R19 (FRONT) and 275/35R19 (REAR)

NOTICE

- If the vehicle has had all 4 tires replaced with the applicable replacement tires (the Michelins or Continentals noted above), or with another manufacturer’s tires, the recall is complete. Submit op code 51C01410 for Inspection Only.

IMPORTANT

Vehicles equipped with 18” Michelin tires require the ECU Upgrade to be performed.

When installing any Michelin tires onto a vehicle, always perform a GDS ROM ID check to verify the update has been performed. Reference the ROM ID Information Table on page 9 of this TSB.

Service Procedure: Tire Replacement

NOTICE

Use care and take preventative measures to prevent damaging the wheel when removing / installing tires. Always ensure tire changing equipment is in proper working order, and always replace worn heads/guards/parts prior to beginning service procedure.

If needed, tools and sleeves are available for purchase that will aid in this procedure. Examples are given below, and are available through the dealer's local Hunter representative.

**A. High-performance bead lever "HM" – RP6-G1000A11**

Patented, high-performance bead lever dramatically reduces servicing effort. A must for servicing low-profile tires.

B. Bead lever protector sleeve – RP6-0326

Sleeve protects wheel flange by allowing the bead lever to slip out of the tire instead of being dragged against the rim during demounting. Box of 10 (RP6-0326-B).

**A. Traditional flat design bead lever – RP11-3009516**

For demounting tires on conventional tire changers.

B. Bead lever sleeve protectors (4 ea.) RP11-8-11400098

Sleeve protects wheel flange by allowing the bead lever to slip out of the tire instead of being dragged against the rim during demounting. For use with RP11-3009516 Bead Lever Tool.

1. Lift the vehicle on a hoist, remove the wheel lug nuts, and remove the wheel and tire assemblies.

NOTICE

Tightening torque: 65.1~79.6 lb-ft (88.3~107.9 Nm, 9.0~11.0 kgf.m)



2. Separate the tires from the wheels and install the new tires.

CAUTION

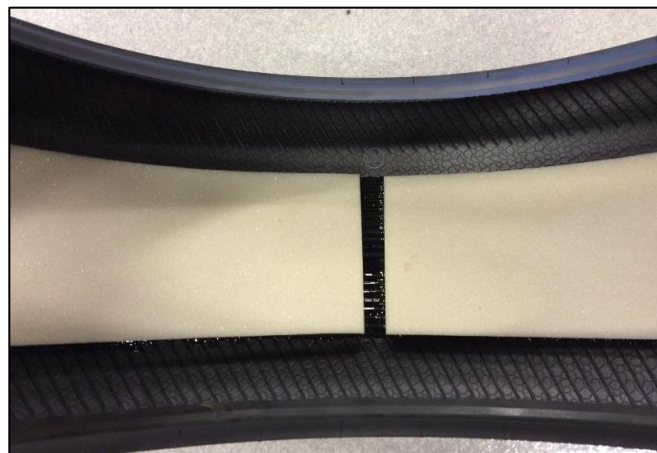
Take care to not damage the TPMS sensor.

NOTICE

The 18" Michelin tires need to be mounted with the "OUTSIDE" label facing the outside of the vehicle.

NOTICE

The 19" Continental tires feature a foam insert inside the tread. This is designed to help reduce tire noise, and should not be removed prior to installation.



3. Balance the wheel/tire assemblies, and check road force variation (RFV).

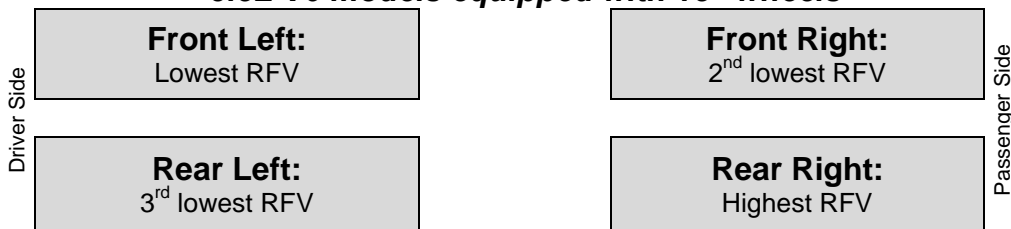
Record the RFV value of each assembly on the worksheet at the end of this TSB.

IMPORTANT
 The completed worksheet **MUST** be stapled to the RO print out and kept with dealer records.

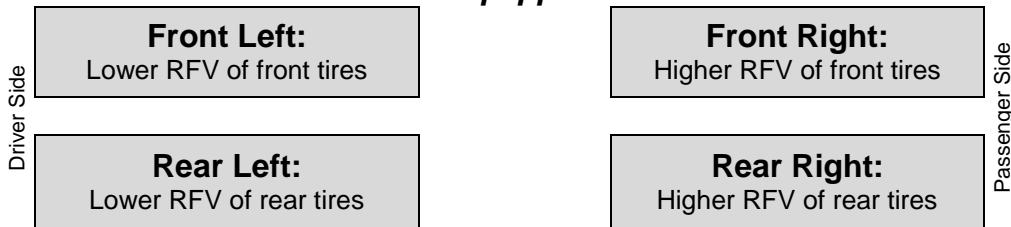


4. **If ALL 4 tires are replaced**, install the wheel and tire assemblies from lowest RFV to highest RFV by distance to the driver***:

3.8L V6 models equipped with 18" wheels



5.0L V8 models equipped with 19" wheels



*****NOTICE**

5.0L V8 Genesis sedan (DH) vehicles are equipped with 19" wheels, and have staggered size tires front vs. rear. **Be sure to install the narrower wheel/tires assemblies on the front, and wider assemblies on the rear of the vehicle.** For either pair of front or rear wheel/tire assemblies, install those assemblies with lower RFV on the driver's side of the vehicle.

NOTICE

Tightening torque: 65.1~79.6 lb-ft (88.3~107.9 Nm, 9.0~11.0 kgf.m)

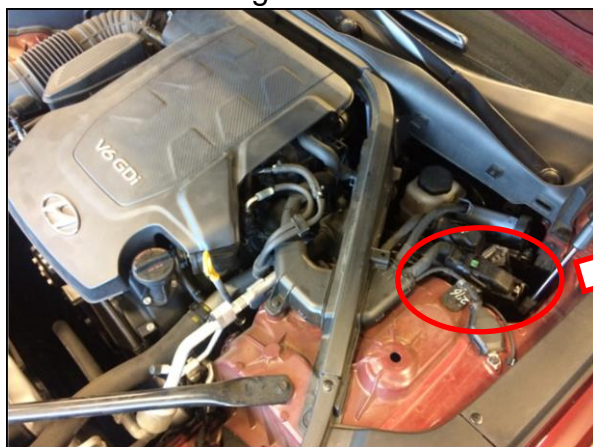
5.
 - For vehicles equipped with 18” tires, perform the ECU update according to the procedures below.
 - For vehicles equipped with 19” tires, the service procedure is complete.

Provide a copy of the applicable tire warranty brochure (Michelin or Continental) to the customer.

Service Procedure: ECU Update for 18” tires

NOTICE

- 1) To verify the vehicle is affected, check the version of the ROM ID according to the ROM ID Information Table, below.
 - a. ECU part number can be checked by the sticker located on the ECU case, as shown in the images below.



- b. Vehicles equipped with active air flap (AAF) are NOT equipped with smart cruise control (SCC).
 - c. Vehicles equipped with smart cruise control (SCC) are NOT equipped with active air flap (AAF).
- 2) If the automatic update fails, turn the ignition OFF for 10 seconds and then perform the manual update.
- 3) After update, check and clear any DTC(s) present.

ROM ID Information Table:

MODEL	OPT	ECU PART NO.	ECU ROM ID	
			OLD	NEW
DH 3.8L 18” wheels	+AAF (with Active Air Flap)	39105-3CEN1	DHEN38GM2**D81BF	DHEN38GM2**D8CBF
			DHEN38GM2**D81CF	
			DHEN38GM2**D87BF	
			DHEN38GM2**D8CAF	
	-AAF (without Active Air Flap)	39105-3CEN5	DHEN38GM2**D81B*	DHEN38GM2**D8CB*
			DHEN38GM2**D81C*	
			DHEN38GM2**D87B*	
			DHEN38GM2**D8CA*	

GDS General Precautions:**NOTICE**

Make sure the battery icon at the bottom right of the GDS shows at least 50%; if not, charge the GDS or attach a battery charger.

- Make sure the vehicle's battery has reasonable charge. If the vehicle has been in storage for days, run the engine to ensure an adequate battery charge state for reliable update results.
- Turn off all lights (Do not leave the headlight switch in auto mode) and all accessories (including heater/air conditioner/fan, audio, heated seats, rear defroster, etc.) to ensure the battery will not be discharged during the update.
- Perform the update with the ignition switch in the ON position. (Turn the ignition key to the ON position or press the Start-Stop button two times without depressing the brake pedal).
- Do not disconnect any cables connected to the vehicle or the GDS during the update.
- Do not start the engine or turn the ignition switch OFF during the update.

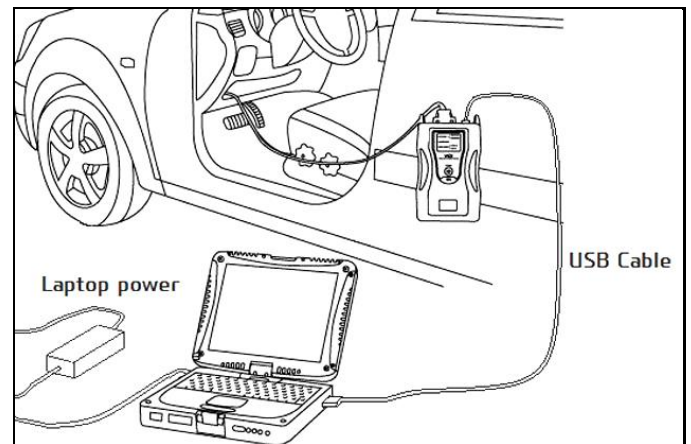
NOTICE

Confirm your GDS has the most recent version. If not, connect the GDS to an Internet port, open the GDS home page and select "Update". Refer to instructions on hmaservice.com if necessary.

If you encounter GDS related problems, call the GIT Helpline at 888-437-0308.

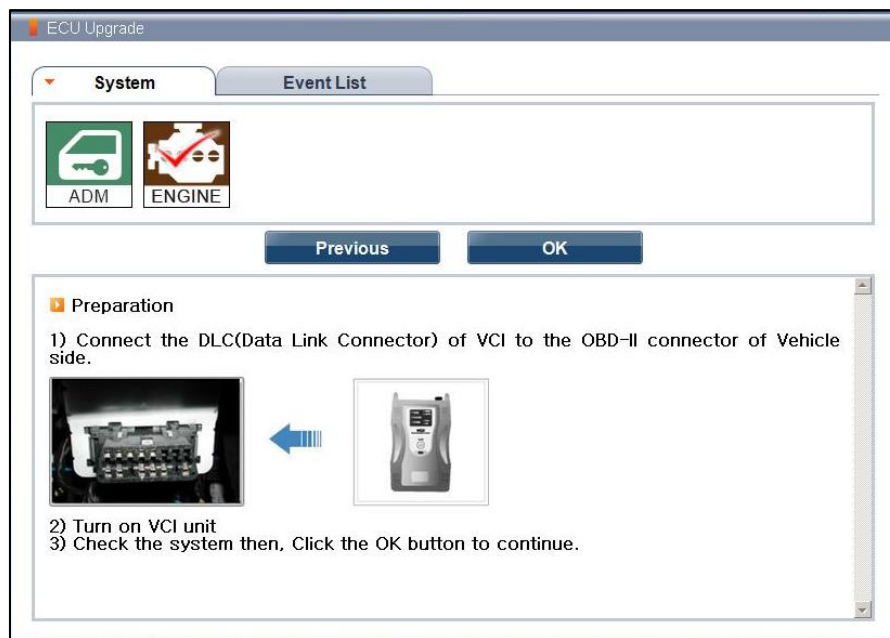
GDS (Global Diagnostic System) Laptop Installation Procedure:

1. Connect external power to the GDS laptop.
2. Connect the USB cable between the GDS and the VCI.
3. Connect the 16-pin DLC connector from the VCI into the DLC located under the driver's side dash.
4. Turn the VCI on, and set the vehicle ignition switch to ON (without starting the engine).

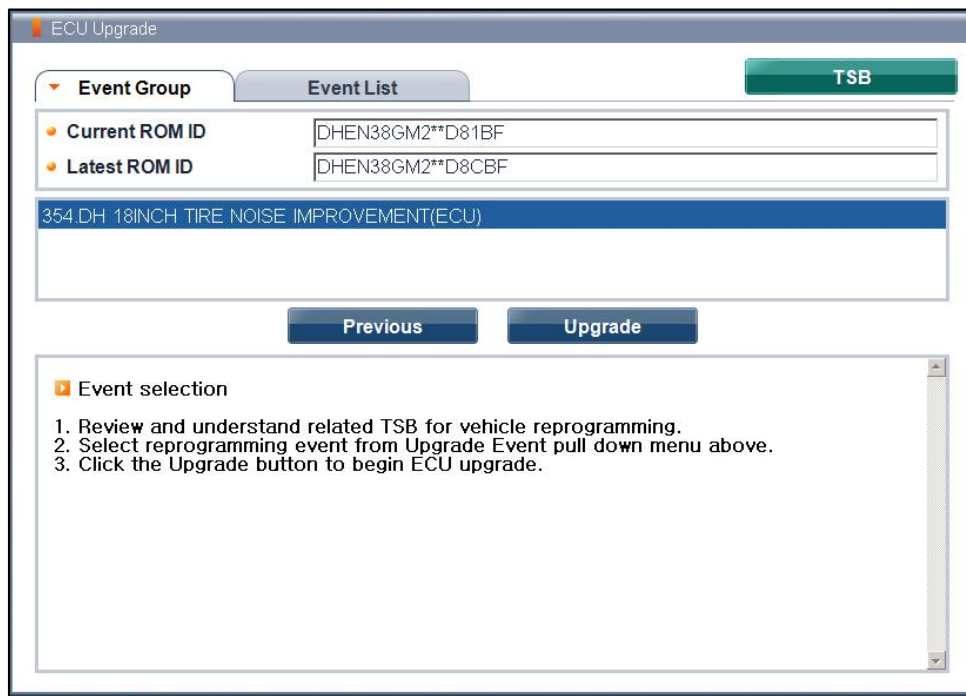


GDS Laptop Auto Mode ECU Update Procedure:

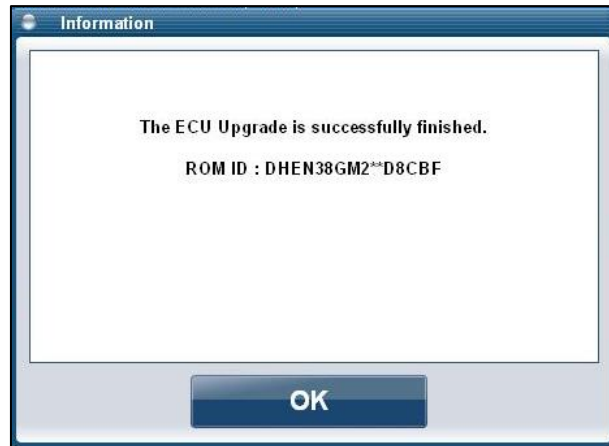
1. From the GDS home page, select **ECU Upgrade**. If necessary, select the VIN.
2. Select **Engine Control** as the system and then select **OK**.
3. Select **Auto Mode** and then select **Next**.
4. From the **System** tab, select **Engine** and then select **OK**. The GDS will read the ROM ID. Confirm the ROM is applicable as shown on Page 9, "ROM ID Information Table."



5. Update event "**354.DH 18INCH TIRE NOISE IMPROVEMENT (ECU)**" will be displayed. Select **Upgrade**.



6. If the screen indicates “**Voltage is OK**” (voltage > 12volts), select **OK**. If not, select **CANCEL** and charge the vehicle battery by running the engine for 10 minutes.
7. Updating will occur until 100% is reached on the bar graph. Turn the ignition **OFF** for 10 seconds, place it back in the **ON** position, and then click **OK** to continue according to the information displayed on the screen.
8. The GDS will confirm that Engine ECU reprogramming is successfully finished and display the new ROM ID. Select **OK**.



9. If the Engine update was not successful, go to **GDS Laptop Manual Mode ECU Update Procedure**.
10. Check for DTCs in all systems and erase all DTCs stored due to loss of CAN communication during the ECU update.
11. Turn the **ignition OFF for 10 seconds** then turn **ON** before going to engine start.
12. Start the engine to confirm proper operation.
13. Clear DTCs in the BlueLink system per instructions given in TSB 12-BE-005-2.

NOTICE

In the event of AUTO MODE update failure, perform the MANUAL MODE update procedure.

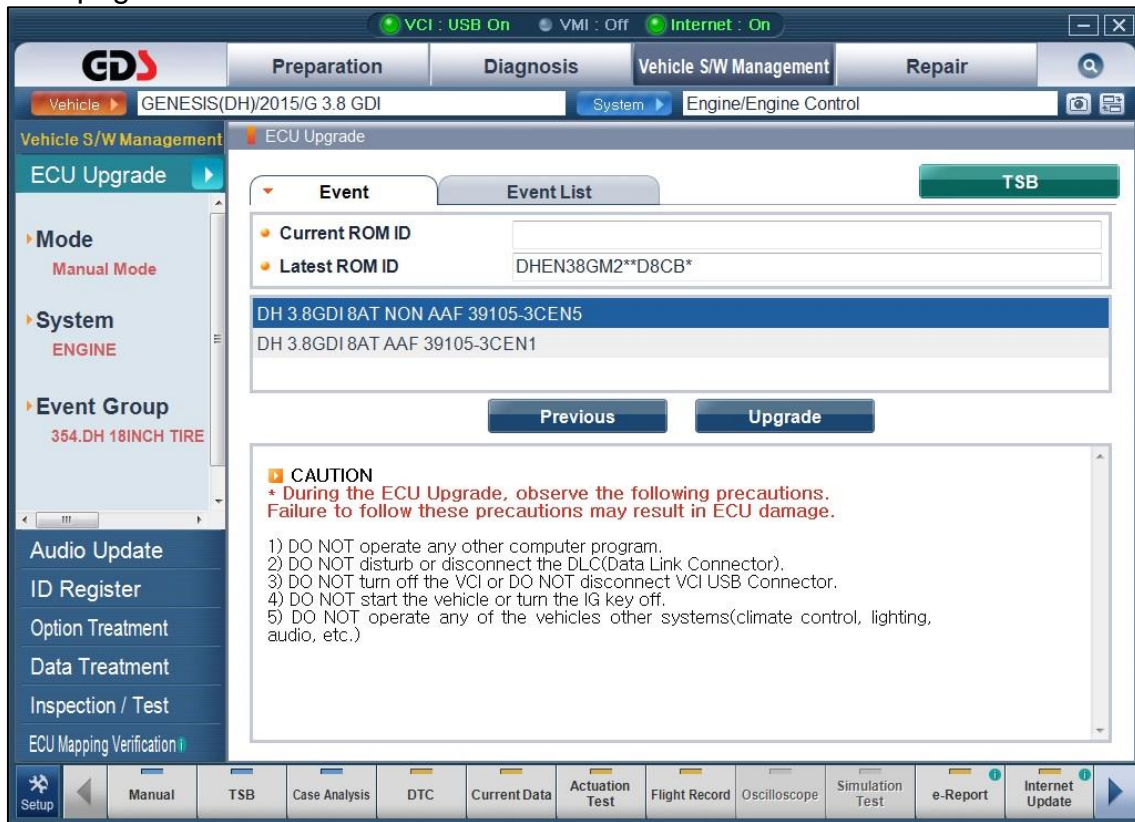
GDS Laptop Manual Mode ECU Update Procedure:

NOTICE

- Manual update should be performed only when the automatic update fails.
- If automatic update fails, turn the ignition switch to **OFF** for 10 seconds, and then back to the **ON** position to reset the control unit before performing manual update.

1. From the GDS home page, select **ECU Upgrade**. If necessary, select the VIN.
2. Select **Engine** as the system and then select **OK**.
3. Select **Manual Mode**, then select **Next**.
4. From the **System** tab, select **Engine** and then select **Next**.
5. Update event “**354.DH 18INCH TIRE NOISE IMPROVEMENT (ECU)**” will be displayed. Select **Next**.

- Select the appropriate control unit part number referencing the above **ROM ID Information Table** on page 9 and click **UPGRADE**.



- Enter the appropriate password from the below table, then click **OK**.

MENU	PASSWORD
DH 3.8GDI 8AT NON AAF 39105-3CEN5	0535
DH 3.8GDI 8AT AAF 39105-3CEN1	0531

- If the screen indicates “**Voltage is OK**” (voltage > 12volts), select **OK**. If not, select **CANCEL** and charge the vehicle battery by running the engine for 10 minutes.
- Updating will occur until 100% is reached on the bar graph. Turn the ignition to the **OFF** position for 10 seconds, and then place it back in the **ON** position and click **OK** to continue according to the information displayed on the screen.
- The GDS will confirm that Engine ECU reprogramming is successfully finished and display the new ROM ID. Select **OK**.
- Check for DTCs in all systems and erase all DTCs stored due to loss of CAN communication during the ECU update.
- Start the engine to confirm proper operation.
- Clear DTCs in the BlueLink system per instructions given in TSB 12-BE-005-2.

GDS-Mobile Installation Procedure:

1. Connect the VCI-II into the vehicle's DLC connector under the driver side instrument panel and check to ensure the VCI-II is powered on.

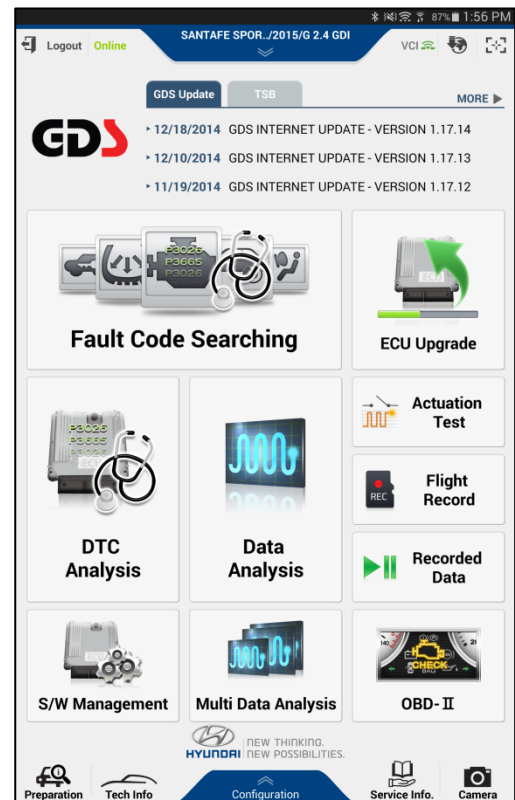
**NOTICE**

- For GDS-mobile, the update is done via wireless communication (USB cable connection is not required).
- Before starting ECU update, ensure tablet has sufficient battery charge.

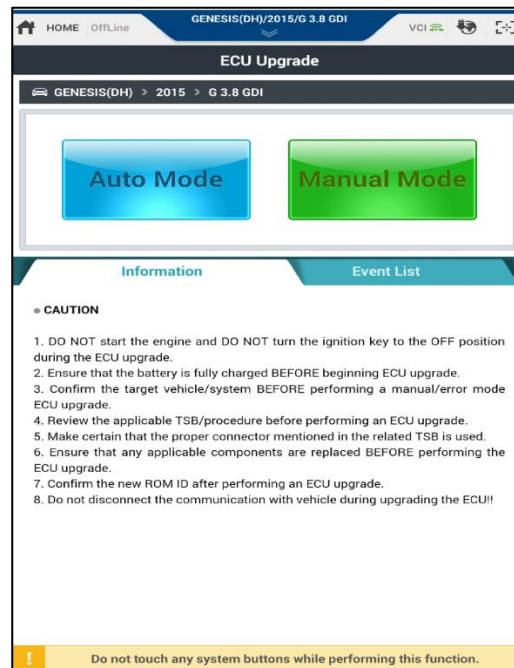
GDS-Mobile Automatic Update Procedure:

1. Start from the initial screen. Vehicle information should be automatically selected. If not, manual vehicle selection is also possible.

From the initial screen, select **ECU Upgrade**.



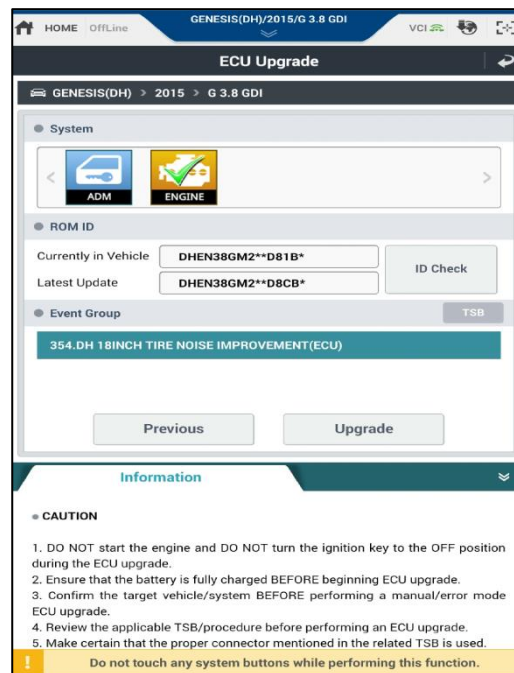
2. Select **Auto Mode** on the ECU Upgrade screen.



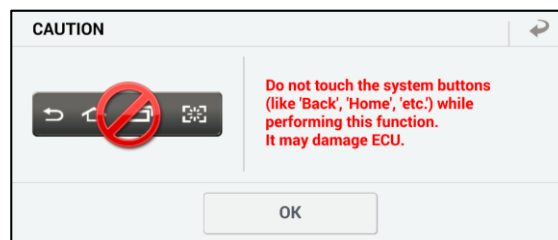
3. With the **ENGINE** system checked, select **ID Check** to check ROM IDs.

Current ROM ID will be displayed, along with latest update ROM ID.

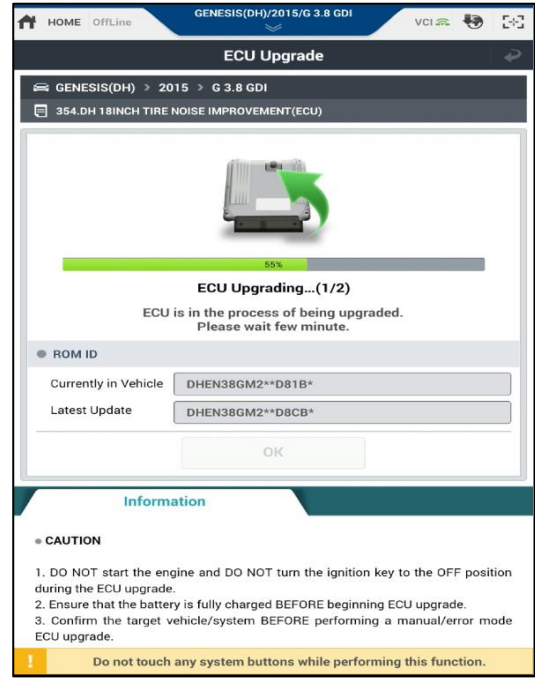
Event “**354.DH 18INCH TIRE NOISE IMPROVEMENT(ECU)**” will be displayed under Event Group. Select **Upgrade** to continue.



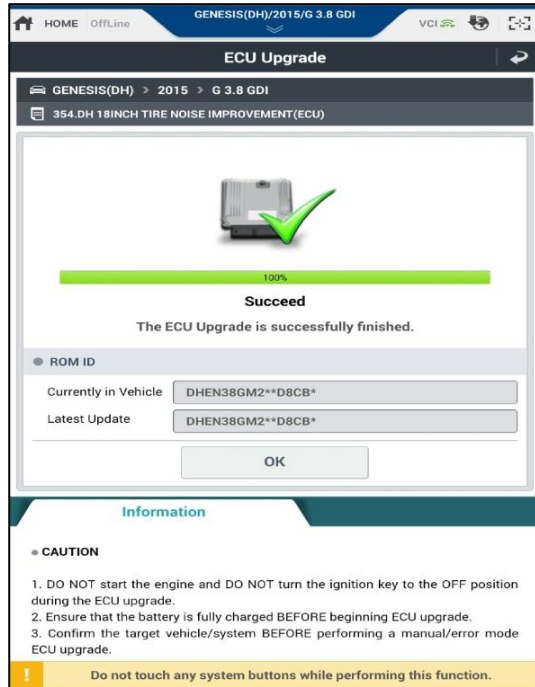
4. Read the caution statement and select **OK** to continue.



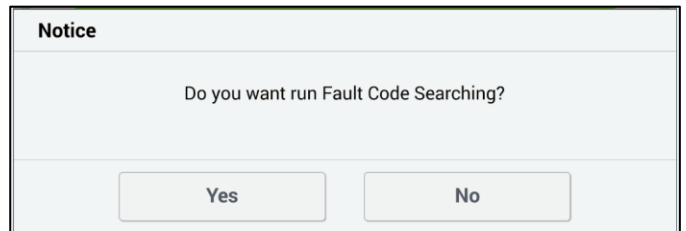
- 5. ECU Upgrade (1/2) will begin, followed by ECU Upgrade (2/2).



- 6. After ECU Upgrade (2/2) is 100% completed, the screen will display a confirmation message, along with the new ROM ID. Select **OK** to continue.



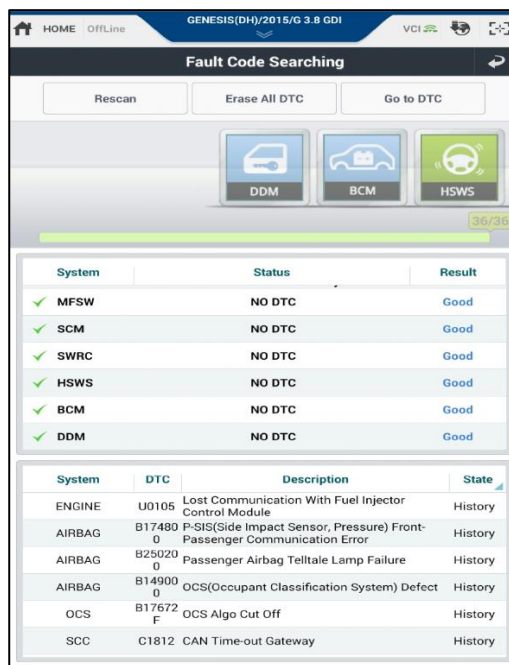
- 7. The option to perform Fault Code Searching will pop up. Select **Yes**.



8. Select all systems, and select **OK**.



9. GDS-mobile will scan all systems for diagnostic trouble codes (DTCs). Clear any DTCs present.



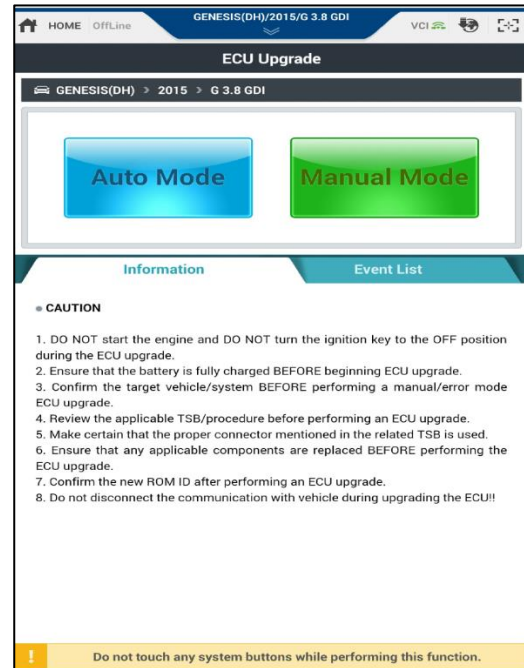
10. Turn the ignition **OFF** for 10 seconds. Then start the engine to confirm proper operation of the vehicle.

GDS-Mobile Manual Update Procedure:

NOTICE

- Manual update should be performed only when the automatic update fails.
- If automatic update fails, turn the ignition switch to **OFF** for 10 seconds, and then back to the **ON** position to reset the control unit before performing manual update.

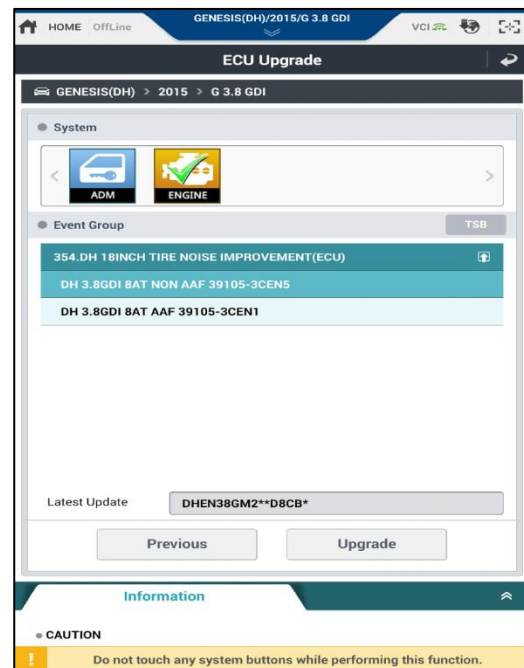
1. Select **Manual Mode** from the ECU Upgrade screen.



2. Select the **ENGINE** system.

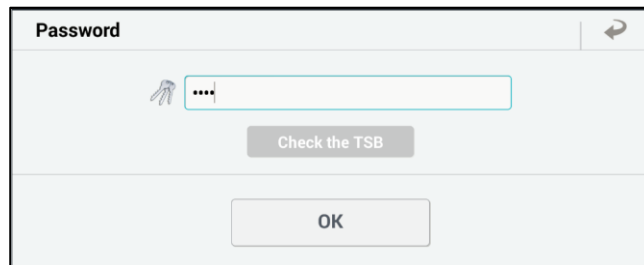
Verify the update event "**354.DH 18INCH TIRE NOISE IMPROVEMENT(ECU)**" is shown.

Select the appropriate control unit part number referencing the above **ROM ID Information Table** on page 9 and click **UPGRADE**.



3. A prompt for password will appear. Enter the appropriate password, then select **OK**.

MENU	PASSWORD
DH 3.8GDI 8AT NON AAF 39105-3CEN5	0535
DH 3.8GDI 8AT AAF 39105-3CEN1	0531



4. Similar to the Automatic mode process, read the caution statement and select **OK**.

The ECU Upgrade should begin and conclude within a few minutes. Turn the ignition **OFF** for 10 seconds, and then back **ON**. Select **OK** to continue.

A confirmation screen will be displayed, along with the new ECU ROM ID.

Verify the ROM ID is correct according to the **ROM ID Information Table** on page 9.

Run the fault code searching on all systems for any DTCs, and erase any found.

Turn the ignition **OFF** for 10 seconds. Then start the engine to confirm proper operation of the vehicle.



DH Genesis Tire Replacement Data Sheet – Recall 138

Date

Dealer Code

Technician

IMPORTANT

- This completed worksheet must be stapled to the RO print out and kept with dealer records.
- This completed worksheet must also be scanned and emailed to: recall138@hmausa.com

Vehicle Data

Prod Date:		Tire Size: (circle one)	18" or 19"	Mileage:	
VIN:					
Wheel Balancer Model:					
Wheel Balancer Calibration Date:					

Radial Force Variation (lbs.)***

Front Left (Lowest RFV)		Front Right (2 nd lowest RFV)	
Rear Left (3 rd lowest RFV)		Rear Right (Highest RFV)	

***5.0L V8 Genesis sedan (DH) vehicles are equipped with 19" wheels, and have staggered size tires front vs. rear. **Be sure to install the narrower wheel/tires assemblies on the front, and wider assemblies on the rear of the vehicle.** For either pair of front or rear wheel/tire assemblies, install those assemblies with *lower RFV on the driver's side of the vehicle.*