



Service Bulletin

PRELIMINARY INFORMATION

Subject: Check Engine Light MIL P015B and / or P1101 Reduce Engine Power

Models: 2013 - 2016 Buick Regal
2013 - 2016 Cadillac ATS
2014 - 2016 Cadillac CTS
2016 Cadillac CT6
2013 - 2016 Chevrolet Malibu
(with engine 2.0L RPO LTG)

The following diagnosis might be helpful if the vehicle exhibits the symptom(s) described in this PI.

Condition/Concern

A customer may have a concern of the check engine lamp being illuminated and/or reduced engine power. When the technician scans the vehicle, diagnostic trouble codes P015B and/or P1101 will be set current or in history.

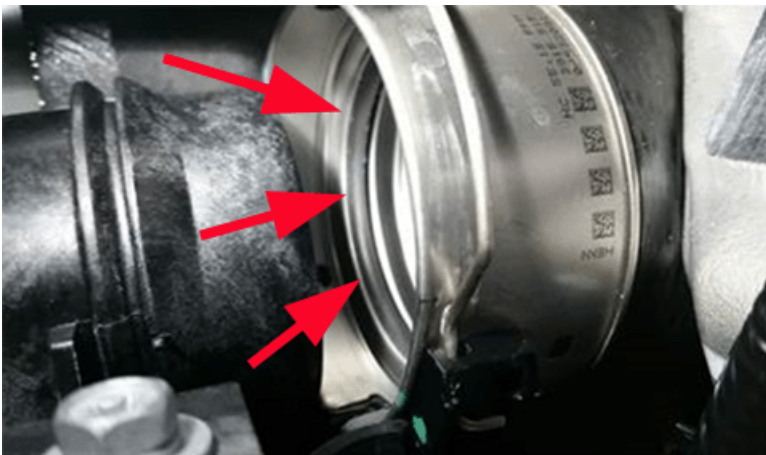
Recommendation/Instructions

After following normal SI diagnostics, if a solution is not found, inspect for a missing/damaged O-ring seal in the charge air cooler coupler.

This coupler is located on the passenger side of the charge air cooler where the air duct slips into it.

The arrows in the picture below are pointing to the O-ring seal being discussed.

The picture below is from an ATS. Other models are similar.



Please follow this diagnostic or repair process thoroughly and complete each step. If the condition exhibited is resolved without completing every step, the remaining steps do not need to be performed.

GM bulletins are intended for use by professional technicians, NOT a "do-it-yourselfer". They are written to inform these technicians of conditions that may occur on some vehicles, or to provide information that could assist in the proper service of a vehicle. Properly trained technicians have the equipment, tools, safety instructions, and know-how to do a job properly and safely. If a condition is described, DO NOT assume that the bulletin applies to your vehicle, or that your vehicle will have that condition. See your GM dealer for information on whether your vehicle may benefit from the information.



WE SUPPORT VOLUNTARY TECHNICIAN CERTIFICATION