



Service Bulletin

File in Section: -

Bulletin No.: 16-NA-116

Date: April, 2016

TECHNICAL

Subject: HD Radio Performance

Attention: This Bulletin also applies to any of the models that may be Export vehicles.

Brand:	Model:	Model Year:		VIN:		Engine:	Transmission:
		from	to	from	to		
Buick	LaCrosse	2014	2014			All	All
Buick	Regal	2014	2014			All	All
Cadillac	ATS	2014	2014			All	All
Cadillac	CTS	2014	2014			All	All
Cadillac	ELR	2014	2014			All	All
Cadillac	SRX	2014	2014			All	All
Cadillac	XTS	2014	2014			All	All
Chevrolet	Corvette	2014	2014			All	All
Chevrolet	Impala	2014	2014			All	All
Chevrolet	Silverado 1500	2014	2014			All	All
GMC	Sierra 1500	2014	2014			All	All
GMC	Yukon	2014	2014			All	All

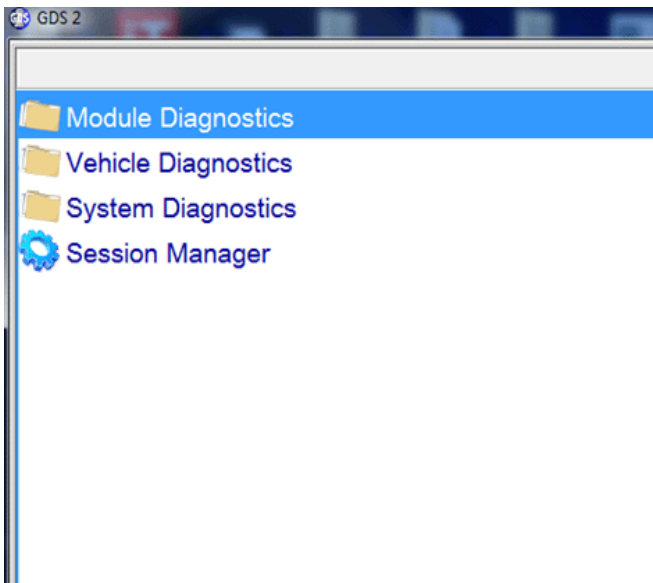
Condition	<p>Some customers may comment on one or more of the following conditions:</p> <ul style="list-style-type: none"> • HD switching toggle setting does not function. • Volume differences between analog and digital HD switching. <p>New improvements that will be received once this bulletin is complete:</p> <ul style="list-style-type: none"> • Improved perceived volume difference between analog and digital HD switching. • Keeping HD Radio On/Off Switching Control status between station change. • Removal of grey HD indicator and 'Acquiring HD Signal...' • Tuning down to lower frequency, not HD2 of lower channel. • Changing HD radio firmware from v5.001 to v5.204 to support above HD changes
Cause	This may be caused by a software calibration within the radio.
Additional Options:	Equipped with radio RPOs IO3, IO5 or IO6

Correction

An updated software calibration as well as new hardware have been released to address this condition. Vehicles not already equipped with the new hardware must obtain new hardware as well as new software. Vehicles already equipped with new hardware need only update software.

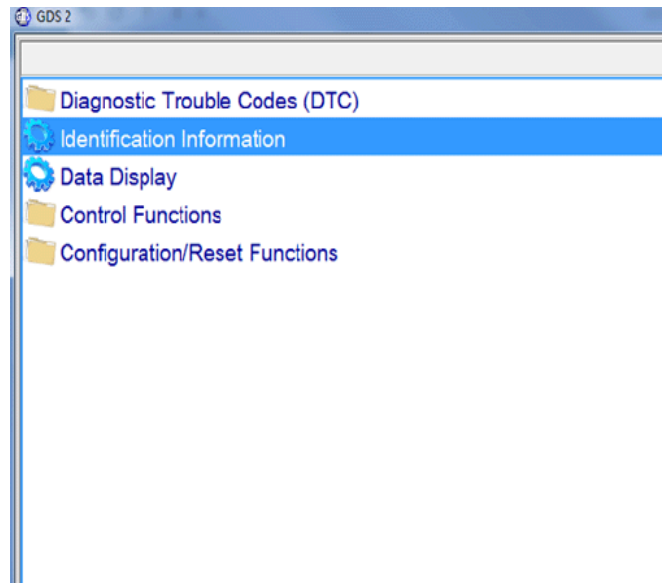
Verify the radio hardware part number using GDS2 and determine if new hardware is required using the steps and chart below:

1. In GDS2, select:



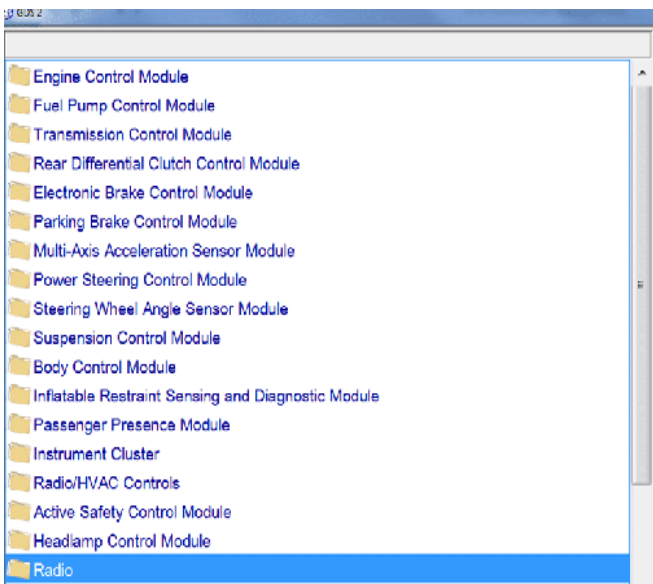
3976042

⇒ Module Diagnostics



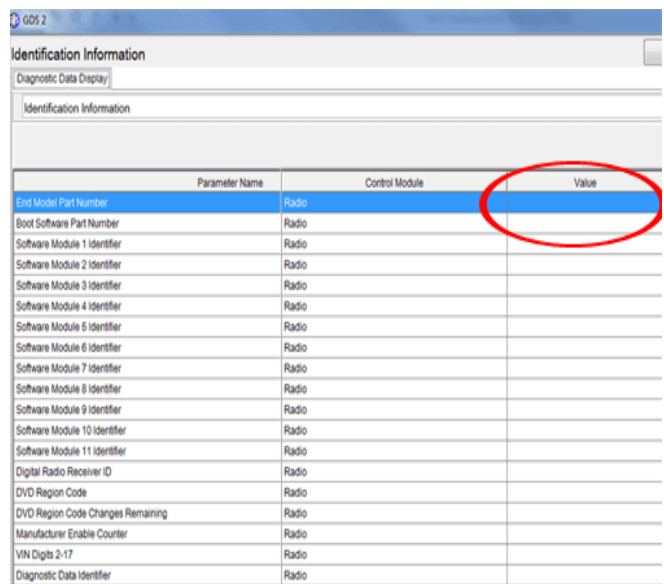
3976044

⇒ Identification Information



3976043

⇒ Radio



3976045

When the above screen is shown, the field “End Model Part Number” will have the hardware part number in the “Value” column.

Hardware Part Numbers Requiring Replacement		
13588209	13588213	13588214
13588217	13588218	13590765
13590769	13590770	13590773
13590774	13591673	13591677
13591774	13591777	13591778
13591979	13591982	13591983
13591992	13591996	13592702
13592705	13592706	13592715
13592719		

If radio replacement is required, refer to *Radio Replacement* and *Radio Programming and Setup* in SI.

Once the correct hardware is installed in the vehicle, update the radio using the Service Programming System (SPS) with the latest calibrations available on TIS2WEB. Refer to the SPS procedures in SI.

Warranty Information

Labor Operation	Description	Labor Time
3420840	Radio Replacement	Use Published Labor Operation Time
2810335	Radio Reprogramming with SPS	Use Published Labor Operation Time

Version	1
Modified	

