

**HYUNDAI**NEW THINKING.
NEW POSSIBILITIES.**Technical Service Bulletin**

GROUP

**AUTOMATIC
TRANSMISSION**

NUMBER

16-AT-002-1

DATE

APRIL 2016

MODEL(S)

SONATA (YF HEV)**SUBJECT:** TCU & HCU UPDATE – 2011~15 MY SONATA HYBRID (YF HEV)HYUNDAI
Global Diagnostic System**ECU Update***This TSB supersedes TSB 16-AT-002 to revise Warranty Data.***Description:**

This bulletin provides information related to the TCU and HCU software update for certain 2011~15 Sonata Hybrid (YF-HEV) vehicles with improved 100 mesh solenoids. These updates must be performed for the part numbers shown below only **after** the transmission has been replaced.

If the update is not completed, the transmission may experience a small shift flare or delayed shift.

Applicable Vehicles: Certain 2011~15 Sonata Hybrid (YF HEV) with the following transmission part numbers installed:

- 45000-3D010, 00268-3D010
- 45000-3D340, 00268-3D340

GDS Information:System Selection: **AT** and **HCU**

Event #	Description
372*	372.YF HEV 100 Mesh Solenoid Valve Logic (HCU)
373*	373. YF HEV 100 Mesh Solenoid Valve Logic (TCU)

(*or use a later available event as listed in the GDS ECU Update screen if one is available.)

NOTE: The **HCU** Update may not be required for some 2015 vehicles.

Warranty Information:

Model	Op Code	Operation	Op Time	Causal P/N
Sonata (YF HEV)	39700F05	HCU UPGRADE TCU UPGRADE	0.3 M/H	Refer to TCU ROM ID Table, Page 3

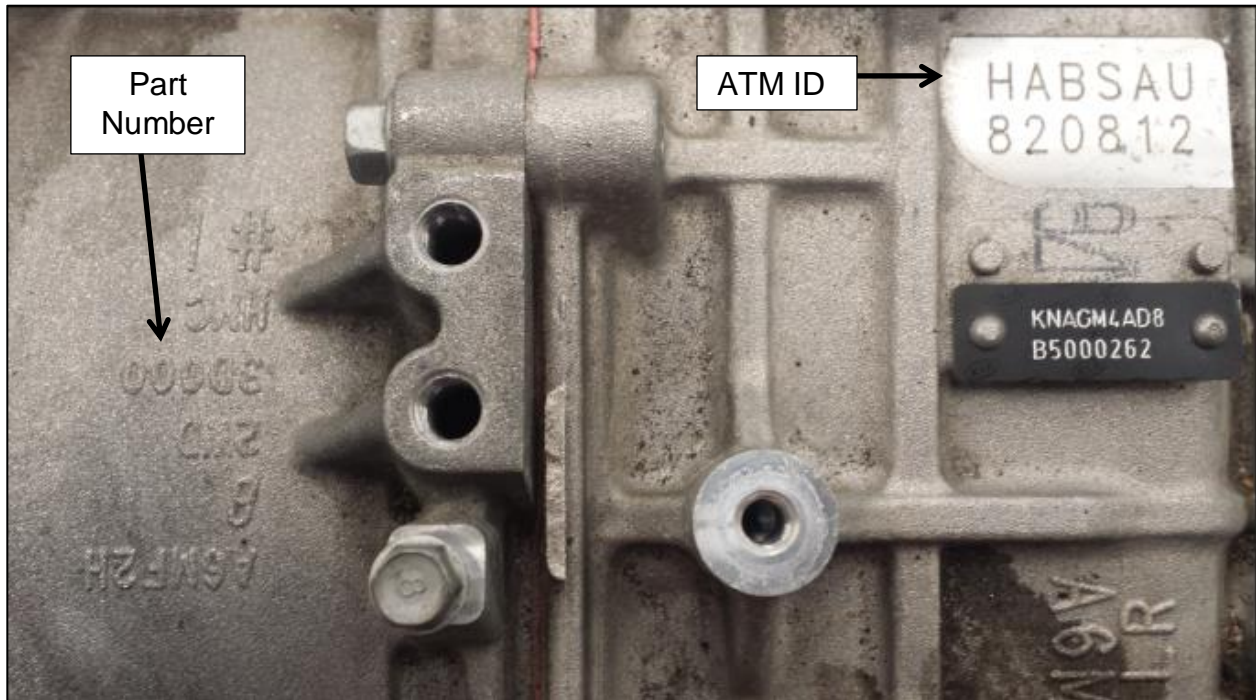
NOTICE

You must initially perform GDS TCU & HCU Update in Auto Mode.

- If the TCU or HCU Update starts but then fails in Auto Mode, perform the update in Manual Mode to recover.
- Refer to the General Instructions found in TSB: 15-GI-001 (GDS Mobile) and 15-GI-002 (PC GDS).

Solenoid Identification Procedure for New Transmissions (Part number 45000-3Dxxx):

- Locate the ATM ID and part number on the top of the **installed** transmission.
- Refer to Parts Information below to determine if 100 mesh solenoid is applied.



Parts Information for New Transmissions:

Vehicle	T/M	ATM Part Number	Model	ATM ID	Solenoid Mesh	Update Required
YF HEV	A6MF2H	45000-3D000	YF HEV THETA 2.4	HA*SAU	400 mesh	NO
		45000-3D300	YF HEV THETA 2.4	HA*SBU		
		45000-3D320	YF HEV THETA 2.4	HB*SAU		
		45000-3D340	YF HEV THETA 2.4	HB*SBU	100 mesh	YES
		45000-3D010	YF HEV THETA 2.4	HA*SCU		

NOTICE

Remanufactured transmissions have a warning tag attached to the transmission that indicates 100 mesh solenoids were installed. If so, the TCU and HCU updates must be performed.

ROM ID Table:

#372 HCU ROM ID:

Model	System	P/N	OLD	NEW
			ROM ID	ROM ID
YF HEV	HCU	39700-2G100 39700-2G101	GYFEANEH HS0-C000 GYFEANEH HS1-C000 GYFEANEH HS4-C000 GYFECNEH HS0-C000 GYFEANEH HS5-C000 GYFECNEH HS1-C000 GYFECNEH HS2-C000 GYFECNEH HS3-C000	GYFECNEH HS4-C000
		39700-2G102 39700-2G104	GYFEDNEH HS0-C000 GYFEDNEH HS1-C000 GYFEDNEH HS3-C000 GYFEDNEH HS4-C000 GYFEDNEH HS5-C000 GYFEDNEH HS6-C000 GYFEDNEH HS7-C000 GYFEDNEH HS8-C000 GYFEDNEH HS9-C000 GYFEDNEH HSA-C000	GYFEFNEH HS0-C000

#373 TCU ROM ID (CAL ID):

Model	System	P/N	OLD	NEW
			CAL ID	CAL ID
YF HEV	TCU	39105-2G910 39105-2G911	TYF2H24SA1 TYF2H24SA3 TYF2H24SA5	TYF2H24SAA
		39105-2G912 39105-2G915	TYF2H24SA4 TYF2H24SA6	TYF2H24SAB
		39105-2G913 39105-2G916	TYF2H24SA7 TYF2H24SA9	TYF2H24SA8

Manual Mode Password Information Table:

#372 HCU:

Menu	Password
YF HEV HCU 39700-2G100/1	2101
YF HEV HCU 39700-2G102/4	2104

#373 TCU:

Menu	Password
YF HEV TCU 39105-2G910/1	2911
YF HEV TCU 39105-2G912/5	2915
YF HEV TCU 39105-2G913/6	2916