



# Rear Seat Leg Noncompliance

# RECALL

**Models Affected:** Certain 2011 – 2017 All American Rear Engine school buses with a right-hand rear side emergency door and seat belt-ready seats.

## ISSUE

The mounting of the seat over the wheelhouse in front of the right-hand rear side emergency door on certain buses with seat belt-ready seats may not meet the requirements of FMVSS 210 Seat Belt Assembly Anchorages.

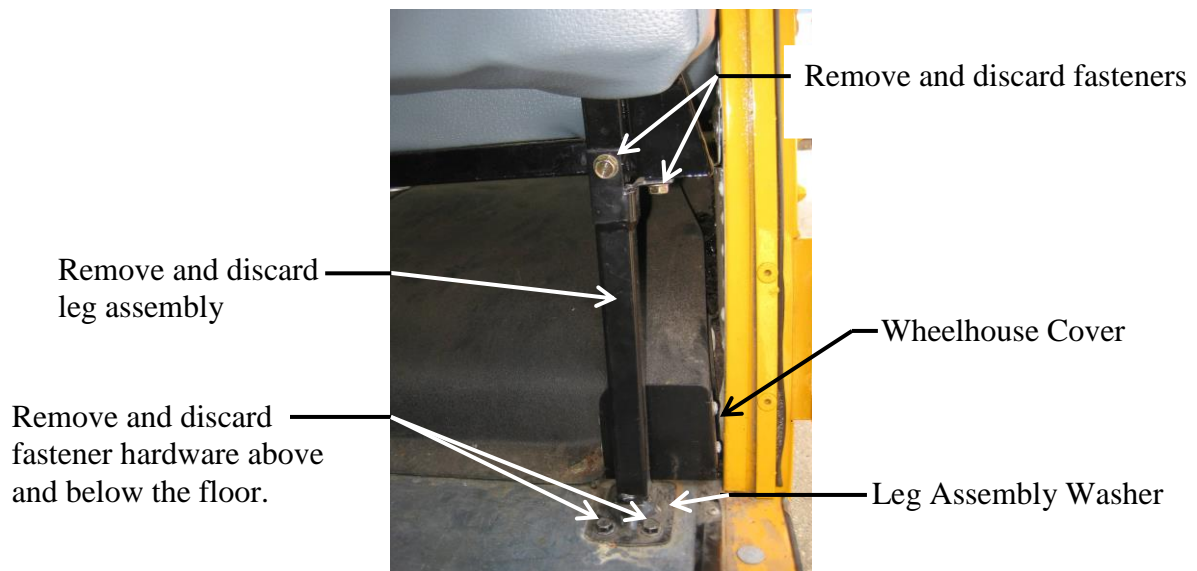
## CORRECTIVE ACTION

Replace the rear leg assembly on the right-hand seat over the wheelhouse in front of the rear side emergency door with a new leg assembly.

## PROCEDURE

**WARNING:** Always follow all Federal, State, Local and Shop safety standards and use proper safety equipment, and thoroughly read and understand all instructions before performing these procedures.

1. Park bus on level ground, turn engine off, remove ignition key, and chock wheels.
2. Remove seat cushion on right-hand seat assembly in front of rear side emergency door.
3. Open rear side emergency door to access leg assembly for right-hand gusset/floor mounted seat.
4. Remove the fasteners attaching the leg assembly to the seat frame and the fasteners attaching the leg assembly to the floor. Discard all fasteners.
5. Remove the leg assembly and discard. Note: Leg assembly washer at the bottom of the leg may be underneath the wheelhouse cover. If necessary, tap lightly with a rubber hammer to remove leg assembly.



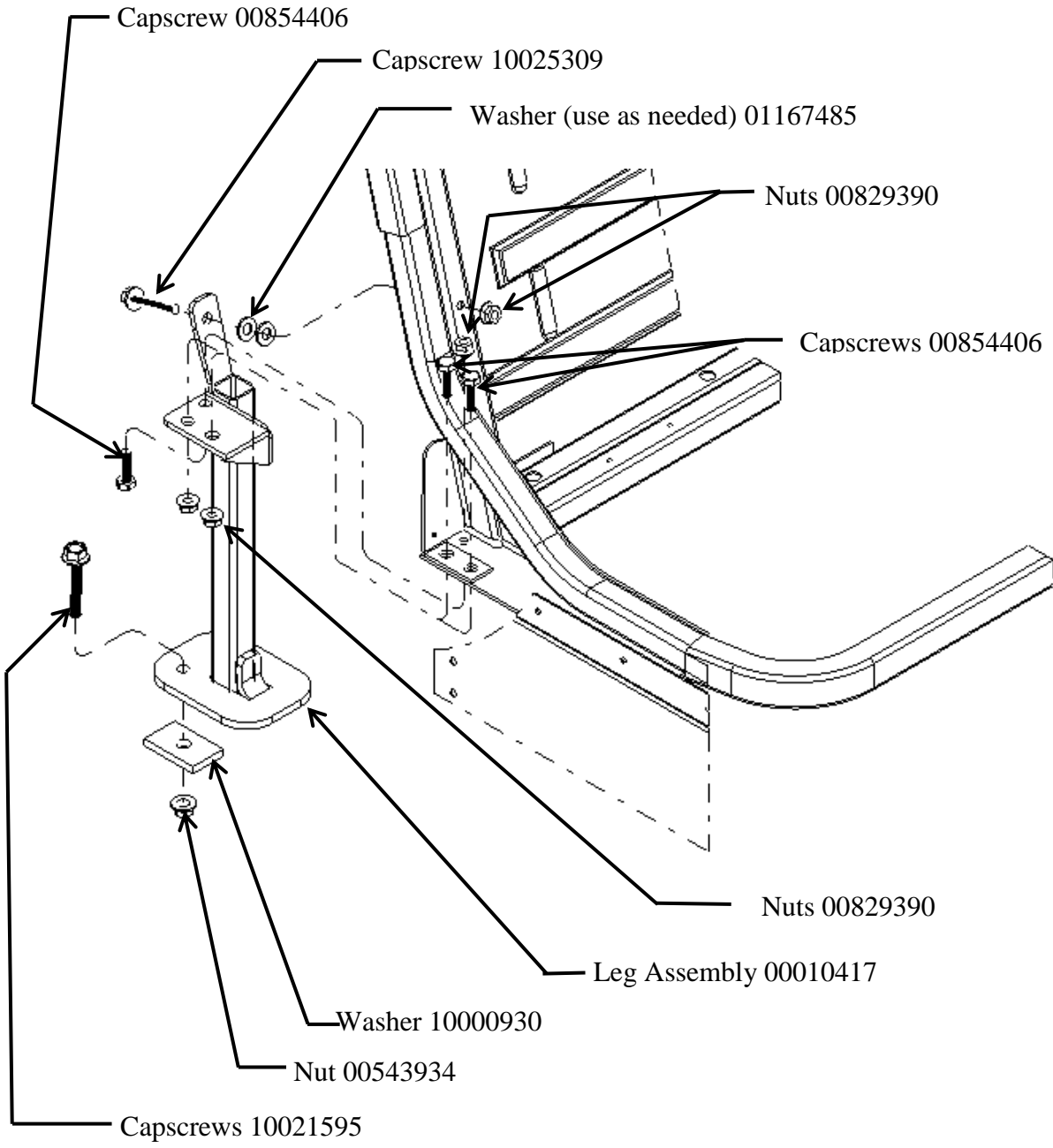
RECALL CAMPAIGN R I 6 Y M



# Rear Seat Leg Noncompliance

# RECALL

R I 6 Y M  
--R E C A L L C A M P A I G N --

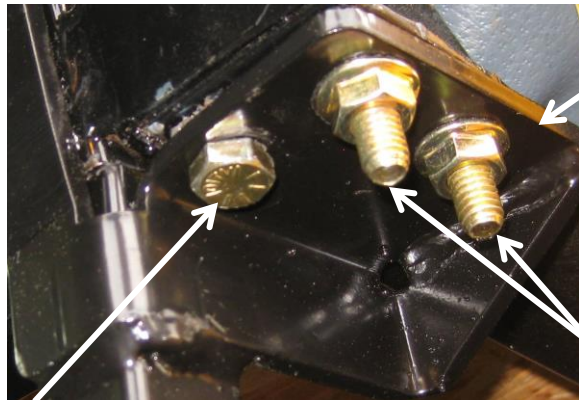




## Rear Seat Leg Noncompliance

# RECALL

6. Install new leg assembly 00010417 in same location. Align holes in the floor with the leg assembly foot washer. Note: May require a slight tap with rubber hammer to slide foot underneath wheelhouse cover.
7. Install two new 3/8-16 X 2 inch capscrews 10021595 through the holes in leg assembly and floor. On the bottom of the floor panel, install rectangular washer 10000930 and 3/8-16 flange lock nut 00543934 on each capscrew finger tight.
8. Align holes in leg assembly with two holes in the seat frame. Install two 5/16-18 X 1 inch capscrews 00854406 down through seat frame and leg assembly bracket. Install two 5/16-18 serrated washer nuts 00829390 underneath seat frame finger tight.
9. Drill 11/32 diameter hole through seat frame using the leg assembly bracket, as a guide. Install 5/16-18 X 1 inch capscrew 00854406 from the bottom of seat frame upward leg assembly bracket and seat frame. Install 5/16-18 serrated washer nut 00829390 on top of seat frame finger tight.



— Leg Assembly

— Install two capscrews through seat frame and leg assembly, install two nuts finger tight.

— Drill 11/32 diameter hole using existing hole in leg assembly, as a guide. Install capscrew through seat frame and nut on top finger tight.

R I 6 Y M

RECALL CAMPAIGN



## Rear Seat Leg Noncompliance

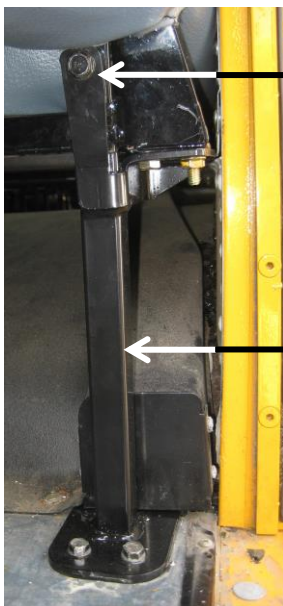
# RECALL

10. Drill 11/32 inch diameter hole through seat frame using vertical flange of the leg assembly bracket as a guide. Be careful **NOT** to damage the upholstery on the seat back pad with drill chuck and bit.



**NOTE: Drill bit and drill chuck must not contact upholstery.**

11. Install 5/16-18 X 1.75 inch capscrew 10025309 from the vertical flange on the leg assembly through rear of seat frame. Note: If there is a gap between the inside of the vertical flange and the seat frame, install as many 11/32 inch flat washers 01167485, as required to eliminate gap.



Install capscrew through leg assembly and seat frame. Install nut on inside of seat frame. Note: If there is a gap between the back of seat frame and leg assembly, install as many flat washer as needed to remove gap.

Finished installation shown.

12. Install serrated nut. Torque all fasteners. Torque 5/16-18 grade 5 to 12 - 13 FT.LBS. , 5/16-18 grade 8 to 16 - 18 FT.LBS and 3/8-16 grade 8 to 29-33 FT.LBS.
13. Reinstall seat cushion.
14. Remove chock and place bus back in service.

R I 6 Y M

RECALL CAMPAIGN



**Rear Seat Leg Noncompliance**

*RECALL*

<b>ITEM NUMBER</b>	<b>PART NUMBER</b>	<b>DESCRIPTION</b>	<b>QTY.</b>
1	00854406	CAPSCREW,HEX HD,5/16-18 X 1,GR8,YEL ZN DICH	3
2	00829390	NUT,HEX HD,5/16-18,SER WASHER,YEL ZN DICH	4
3	10025309	CAPSCREW,HEX,FLG,5/16-18X1.75,GR5,FULLY TRD,BLK ZN	1
4	01167485	WASHER,FLAT,11/32 X 11/16 X 5/64,HDN,BLK ZN	2
5	00010417	LEG ASSY,GUSSET/FLOOR MTD SEAT,RH,W/PLY FL	1
6	00543934	NUT,HEX HD,3/8-16,ZINC,LG FLG LK,YEL ZNDICH	2
7	10000930	WASHER,1.25 X 2.00 X 0.25 W/0.437 HOLE	2
8	10021595	CAPSCREW,HEX FLG,HEAD,3/8-16x2,GR8,BLACK ZINC	2

**R I 6 Y M**  
--R E C A L L C A M P A I G N --