

Classification:

EC16-014

Reference:

ITB16-014

COPYRIGHT© NISSAN NORTH AMERICA, INC.

Date:

April 6, 2016

2014-2015 Q50; MIL ON WITH DTC P0116

APPLIED VEHICLES: 2014-2015 Q50 (V37)NOTE: This bulletin does not apply to Q50 Hybrid vehicles

IF YOU CONFIRM

The MIL is ON with P0116 Engine Coolant Temperature (ECT SENSOR) stored,

and

There are no drivability issues.

ACTION

1. Refer to step 6 in the **SERVICE PROCEDURE** to confirm if ECM reprogramming applies.
2. If it applies, reprogram the ECM.

IMPORTANT: The purpose of ACTION (above) is to give you a quick idea of the work you will be performing. You **MUST** closely follow the entire **SERVICE PROCEDURE** as it contains information that is essential to successfully completing this repair.

Infiniti Bulletins are intended for use by qualified technicians, not 'do-it-yourselfers'. Qualified technicians are properly trained individuals who have the equipment, tools, safety instruction, and know-how to do a job properly and safely. **NOTE:** If you believe that a described condition may apply to a particular vehicle, **DO NOT** assume that it does. See your Infiniti dealer to determine if this applies to your vehicle.

SERVICE PROCEDURE

ECM Reprogramming

- Most instructions for reprogramming with CONSULT-III plus (C-III plus) are displayed on the CONSULT PC screen.
- If you are not familiar with the reprogramming procedure, [click here](#). This will link you to the "CONSULT-III plus (C-III plus) Reprogramming" general procedure.

Preparation for Reprogramming

- Take the vehicle for a 10 minute drive in order to meet the following Idle Air Volume Learn (IAVL) conditions:
 - Engine coolant temperature: 70 -100°C (158 - 212°F)
 - Battery voltage: More than 12.9V (At idle)
 - Transmission: Warmed up



Figure A

NOTE:

- After ECM reprogramming is complete, you will be required to perform Throttle Valve Closed Position, Idle Air Volume Learn (IAVL), and Accelerator Closed Position.
- The above conditions are required for the IAVL to complete.

CAUTION:

- Connect the GR8 battery charger to the vehicle battery. The vehicle battery voltage must stay between 12.0V and 15.5V during reprogramming, or the ECM may be damaged.
- Be sure to turn OFF all vehicle electrical loads. If a vehicle electrical load remains ON, the ECM may be damaged.
- Be sure to connect the AC Adapter. If the CONSULT PC battery voltage drops during reprogramming, the process will be interrupted and the ECM may be damaged.
- Turn off all external Bluetooth® devices (e.g., cell phones, printers, etc.) within range of the CONSULT PC and the VI. If Bluetooth® signal waves are within range of the CONSULT PC during reprogramming, reprogramming may be interrupted and the ECM may be damaged.

1. Connect the CONSULT PC to the vehicle to begin the reprogramming procedure.
2. Open C-III plus.
3. Wait for the plus VI to be recognized.
 - The serial number (Serial No.) will display when the plus VI is recognized.
4. Select **Re/programming, Configuration**.

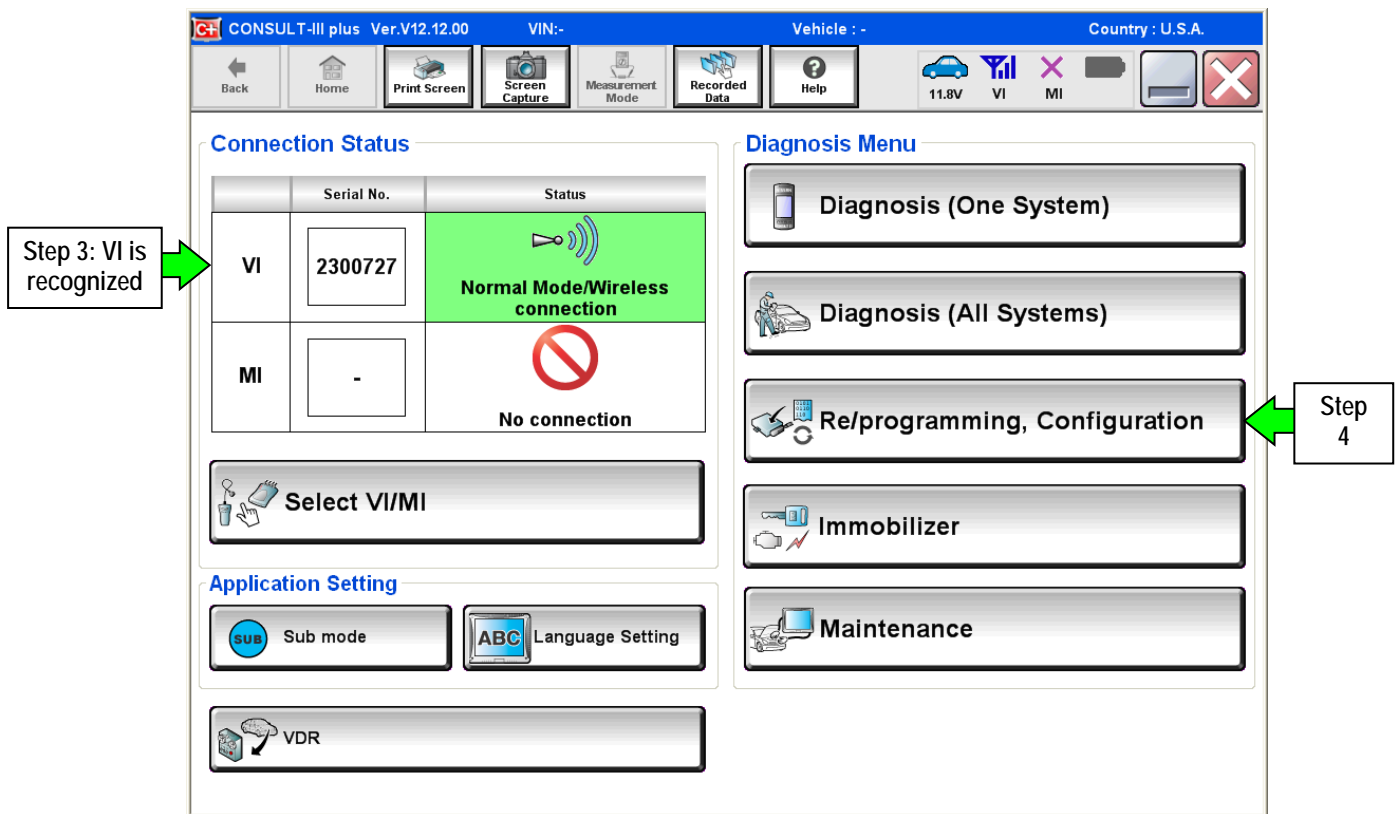


Figure 1

5. Follow the on-screen instructions and navigate C-III plus to the screen shown in Figure 2 on the next page.

6. When you get to the screen shown in Figure 2, confirm this bulletin applies as follows:

A. Find the ECM Part Number and write it on the repair order.

NOTE: This is the current ECM Part Number (P/N).

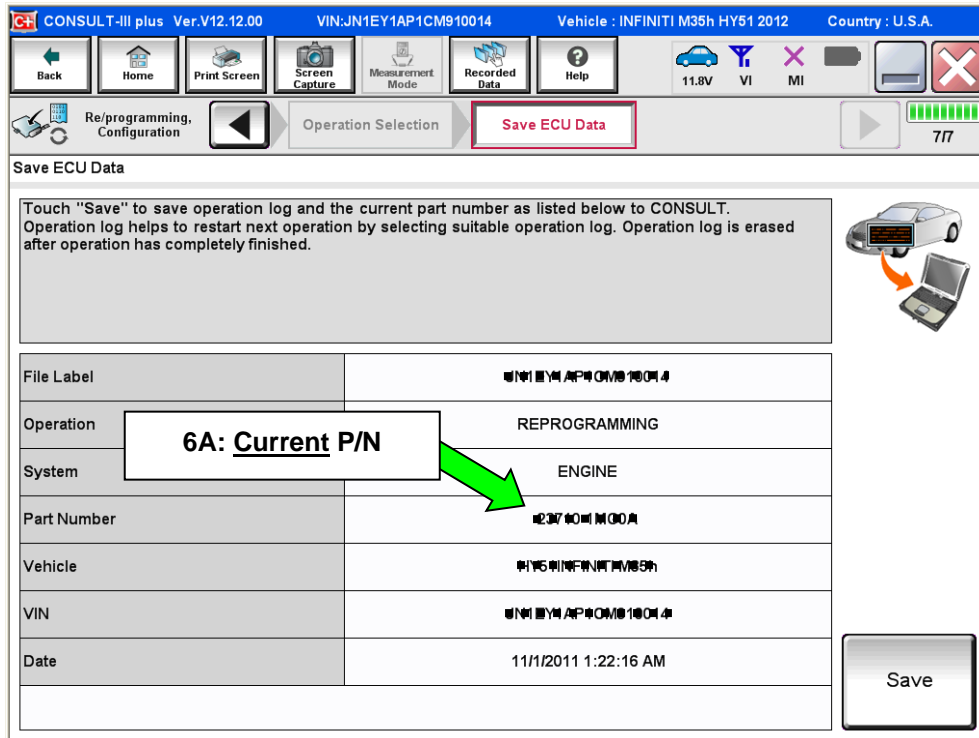


Figure 2

B. Compare the P/N you wrote down to the numbers in the **CURRENT ECM PART NUMBER** column in **Table A** on the next page.

- If there is a **match**, this bulletin **applies**. Continue with the reprogramming procedure.
- If there is **not a match**, ECM reprogramming **does not apply**. Refer to ASIST for further diagnosis.

Table A

MODEL	CURRENT ECM PART NUMBER: 23710-
2014 Q50	4GA7A, 4GA7B, 4GA7C, 4GA7D, 4GA7E
	4GA8A, 4GA8B, 4GA8C, 4GA8D, 4GA8E
	4GA9A, 4GA9B, 4GA9C, 4GA9D, 4GA9E
	4GB1A, 4GB1B, 4GB1C, 4GB1D, 4GB1E
	4GB2A, 4GB2B, 4GB2C, 4GB2D, 4GB2E
	4GB3A, 4GB3B, 4GB3C, 4GB3D, 4GB3E
	4GL1A, 4GL1B, 4GL1E
	4GL2A, 4GL2B, 4GL2E
	4GL3A, 4GL3B, 4GL3E
	4GL7A, 4GL7B, 4GL7E
	4GL8A, 4GL8B, 4GL8E
	4GL9A, 4GL9B, 4GL9E
2015 Q50	4HB1A, 4HB1B, 4HB1C, 4HB1D, 4HB1E
	4HB2A, 4HB2B, 4HB2C, 4HB2D, 4HB2E
	4HB3A, 4HB3B, 4HB3C, 4HB3D, 4HB3E
	4HB4A, 4HB4B, 4HB4C, 4HB4D, 4HB4E
	4HB5A, 4HB5B, 4HB5C, 4HB5D, 4HB5E
	4HB6A, 4HB6B, 4HB6C, 4HB6D, 4HB6E
	4HB7A, 4HB8A, 4HB9A
	4HC1A, 4HC2A, 4HC3A, 4HC4A, 4HC5A, 4HC6A
	4HH1A, 4HH1B, 4HH1C, 4HH1D, 4HH1E
	4HH2A, 4HH2B, 4HH2C, 4HH2D, 4HH2E
	4HH3A, 4HH3B, 4HH3C, 4HH3D, 4HH3E
	4HH4A, 4HH4B, 4HH4C, 4HH4D, 4HH4E
	4HH5A, 4HH5B, 4HH5C, 4HH5D, 4HH5E
	4HH6A, 4HH6B, 4HH6C, 4HH6D, 4HH6E
	4HH7A, 4HH8A, 4HH9A

7. Follow the on-screen instructions to navigate C-III plus and reprogram the ECM.

NOTE:

- In some cases, more than one new P/N for reprogramming is available.
 - If more than one new P/N is available, the screen in Figure 3 displays.
 - Select and use the reprogramming option that **does not** have the message "Caution! Use ONLY with ITBXX-XXX".
- If you get this screen and it is blank (no reprogramming listed), it means there is no reprogramming available for this vehicle. Close C-III plus and refer back to ASIST for further diagnosis.

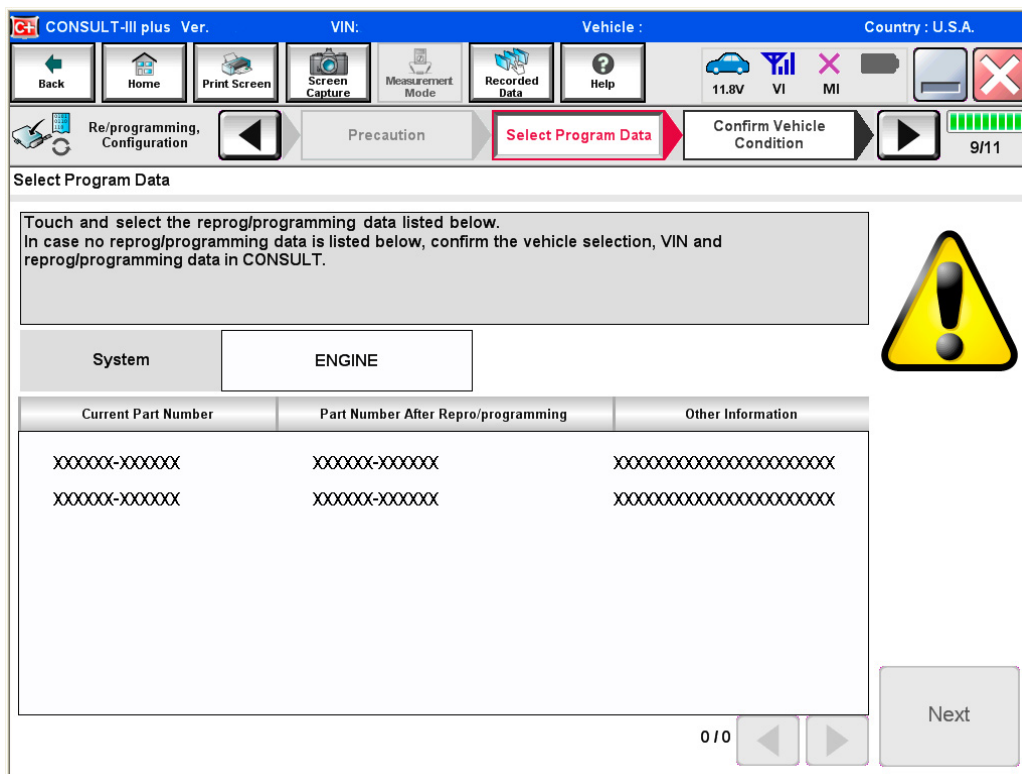


Figure 3

8. When the screen in Figure 4 displays, reprogramming is complete.

NOTE: If the screen in Figure 4 does not display (reprogramming does not complete), refer to the information on the next page.

9. Disconnect the battery charger from the vehicle.

10. Select **Next**.

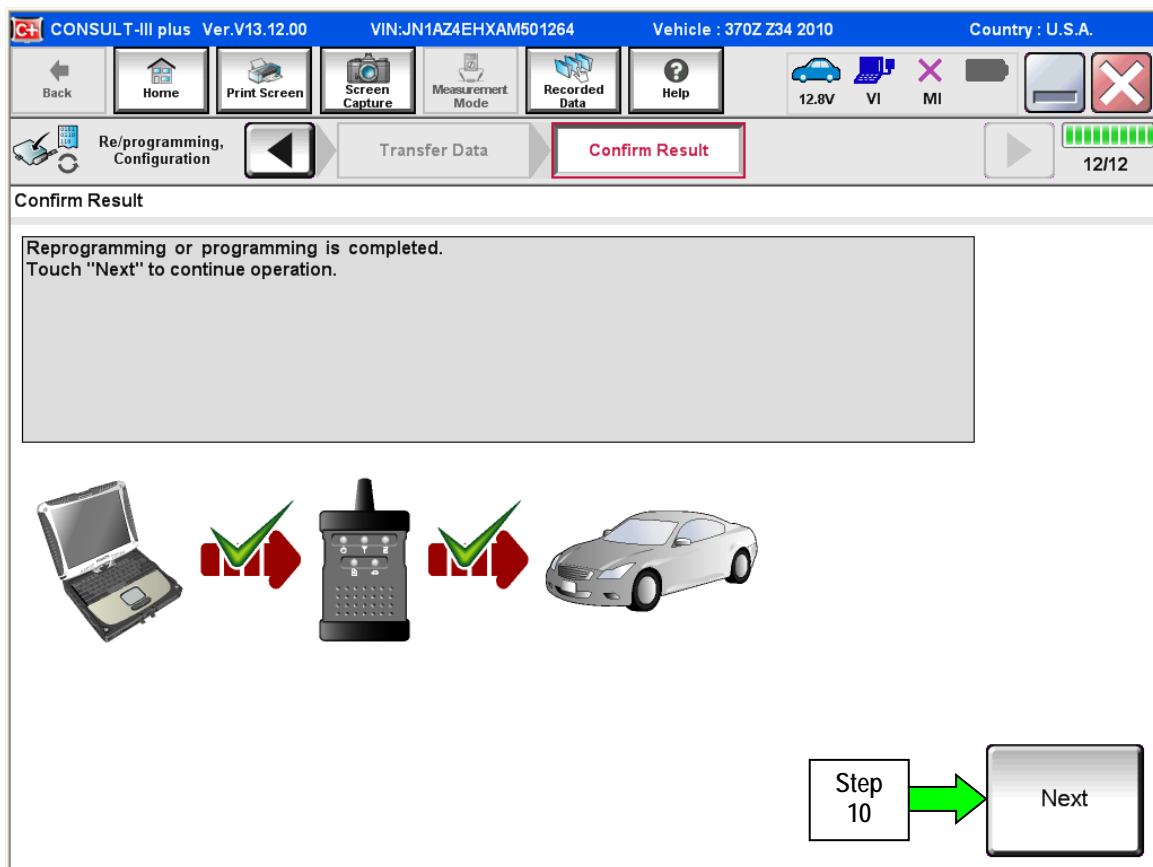


Figure 4

NOTE:

- In the next steps (page 9), you will perform Throttle Valve Closed Position, Idle Air Volume Learn, Accelerator Closed Position, and DTC erase.
- These operations are required before C-III plus will provide the final reprogramming confirmation report.

ECM recovery:

Do not disconnect plus VI or shut down Consult III plus if reprogramming does not complete.

If reprogramming does not complete and the "!" icon displays as shown in Figure 5:

- Check battery voltage (12.0–15.5 V).
- Ignition is ON, engine OFF.
- External Bluetooth® devices are OFF.
- All electrical loads are OFF.
- Select **retry** and follow the on screen instructions.
- "Retry" may not go through on first attempt and can be selected more than once.

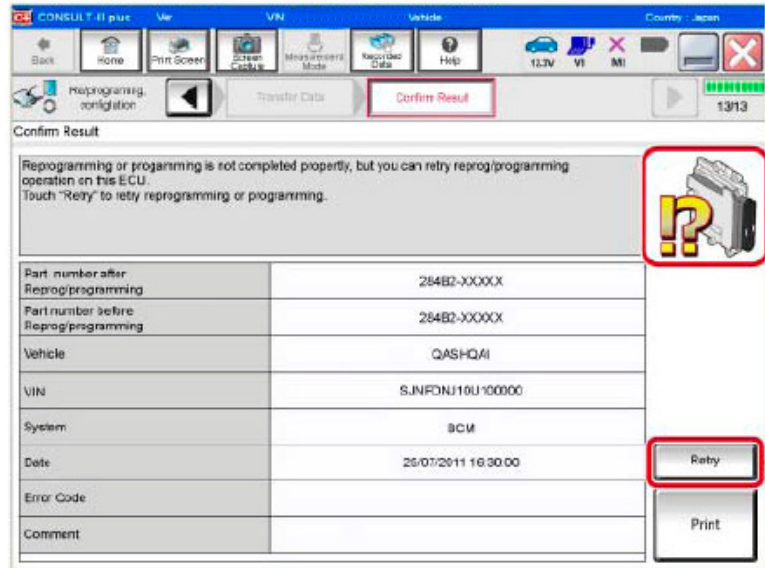


Figure 5

If reprogramming does not complete and the "X" icon displays as shown in Figure 6:

- Check battery voltage (12.0 – 15.5 V).
- CONSULT A/C adapter is plugged in.
- Ignition is ON, engine OFF.
- Transmission is in Park.
- All C-III plus / plus VI cables are securely connected.
- All C-III plus updates are installed.
- Select **Home**, and restart the reprogram procedure from the beginning.

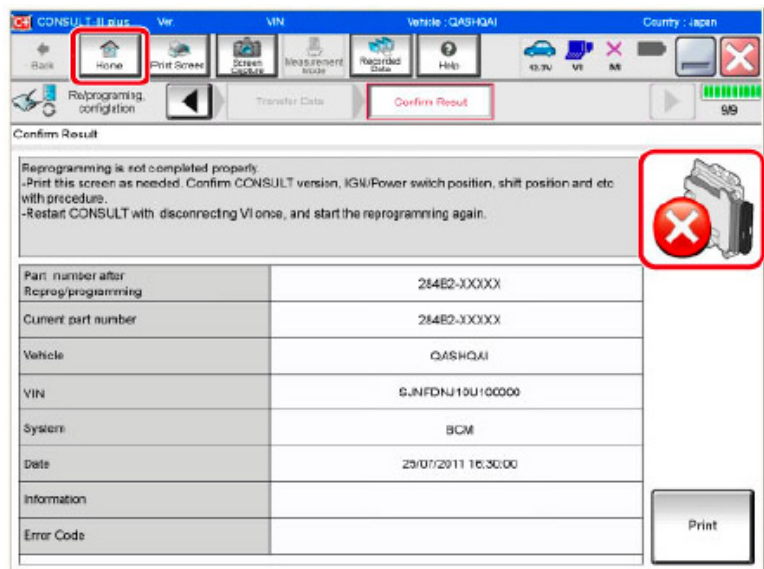


Figure 6

11. Follow the on-screen instructions to perform the following:

- **Throttle Valve Closed Position.**

- **Idle Air Volume Learn (IAVL).**

NOTE:

- Listed below are the conditions required for IAVL to complete.
- If IAVL does not complete within a few minutes, a condition may be out of range.
 - Engine coolant temperature: 70 -100° C (158 -212°F).
 - Battery voltage: More than 12.9V (At idle).
 - Selector lever: P or N.
 - Electric load switch: OFF (Air conditioner, headlamp, and rear window defogger).
 - Steering wheel: Neutral (Straight-ahead position).
 - Vehicle speed: Stopped.
 - Transmission: Warmed up (ATF TEMP SE less than 0.9V).

- **Accelerator Pedal Close Position Learning.**

- **Erase DTCs.**

Continue to the next page.

12. When the entire reprogramming process is complete, the screen in Figure 7 will display.
13. Verify the before and after part numbers are different.
14. Print a copy of this screen (Figure 7) and attach it to the repair order for warranty documentation.
15. Select **Confirm**.

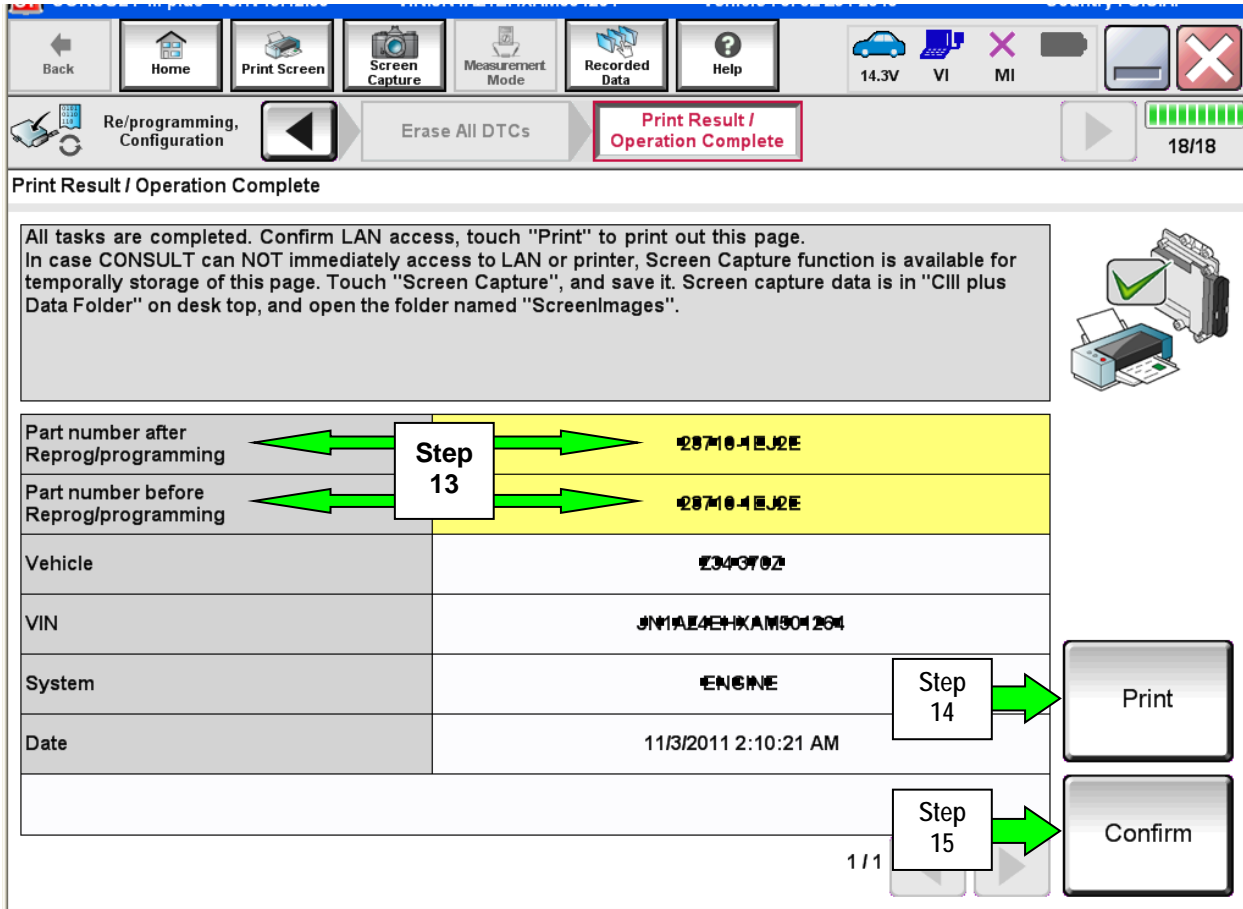


Figure 7

16. Close C-III plus.
17. Turn the ignition OFF.
18. Disconnect the plus VI from the vehicle.

CLAIMS INFORMATION

Submit a Primary Part (PP) line claim using the following claims coding:

DESCRIPTION	OP CODE	PFP	SYM	DIAG	FRT
Reprogram Engine Control Module - ECM	DE97AA	(1)	ZE	32	(2)

- (1) Refer to the electronic parts catalog (FAST) and use the ECM assembly part number as the Primary Failed Part (PFP).
- (2) Reference the Infiniti Online Warranty Flat Rate Manual and use the indicated flat rate time.