



---

# SERVICE BULLETIN

---

Classification:

RS16-002

Reference:

NTB16-025

Date:

March 10, 2016

---

## AIR BAG DIAGNOSIS SENSOR UNIT CONFIGURATION

**APPLIED VEHICLES:** 2015-2016 Murano (Z52)  
2014-2016 Rogue (T32)  
2016 Maxima (A36)

### SERVICE INFORMATION

If an Air Bag Diagnosis Sensor Unit is replaced and the configuration of the old unit could not be saved, use the Service Procedure in this bulletin to:

- Load the VIN specific configuration file from your electronic parts catalog (FAST or equivalent) onto a portable USB storage device (thumb drive).
- Plug the thumb drive into your CONSULT PC.
- Configure the new Air Bag Diagnosis Sensor Unit using the file that you loaded onto the thumb drive.

Nissan Bulletins are intended for use by qualified technicians, not 'do-it-yourselfers'. Qualified technicians are properly trained individuals who have the equipment, tools, safety instruction, and know-how to do a job properly and safely. **NOTE:** If you believe that a described condition may apply to a particular vehicle, DO NOT assume that it does. See your Nissan dealer to determine if this applies to your vehicle.

# SERVICE PROCEDURE

## Obtain VIN Specific Configuration

**NOTE:** FAST is used for the images in this procedure. Other electronic parts catalogs may be different.

1. Open FAST (or equivalent) and type in the VIN.

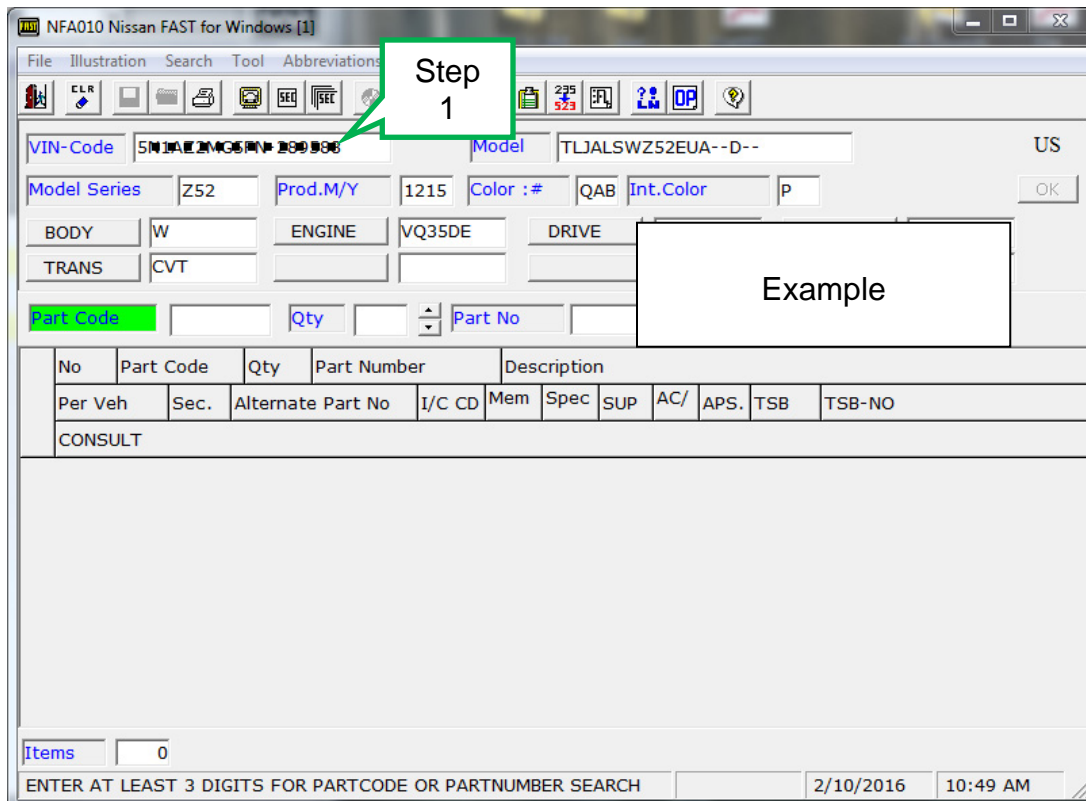


Figure 1

2. Select **ABC** (word search).
3. Type in **"Type"** in the description search window.
4. Select **OK**.

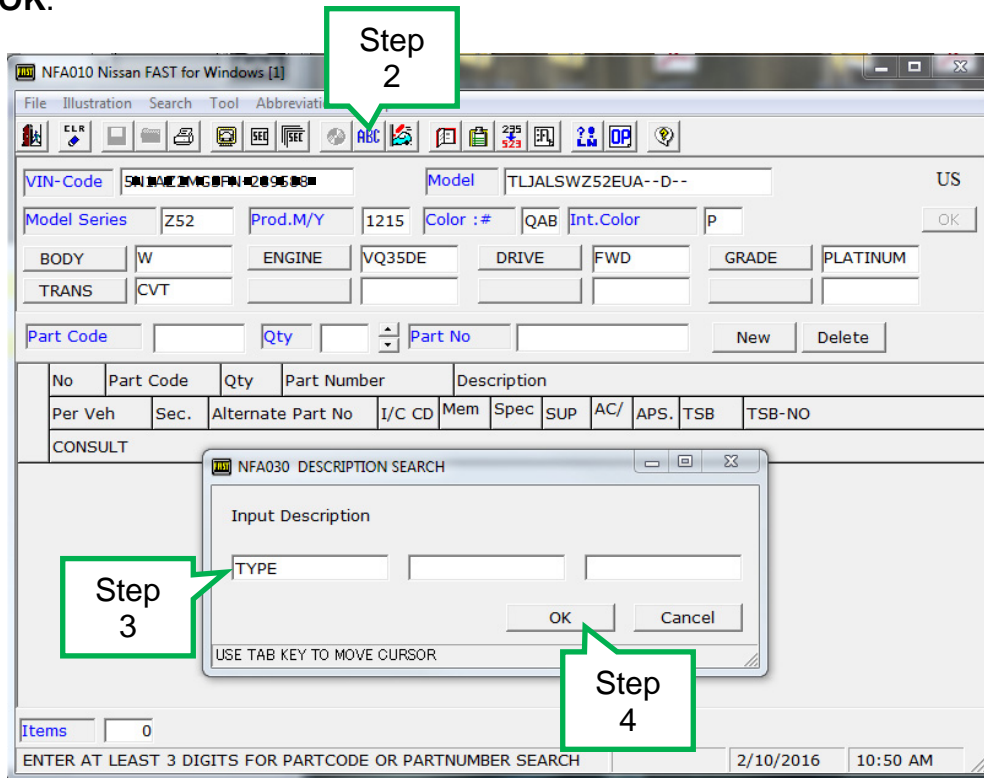


Figure 2

5. Select **OK**.

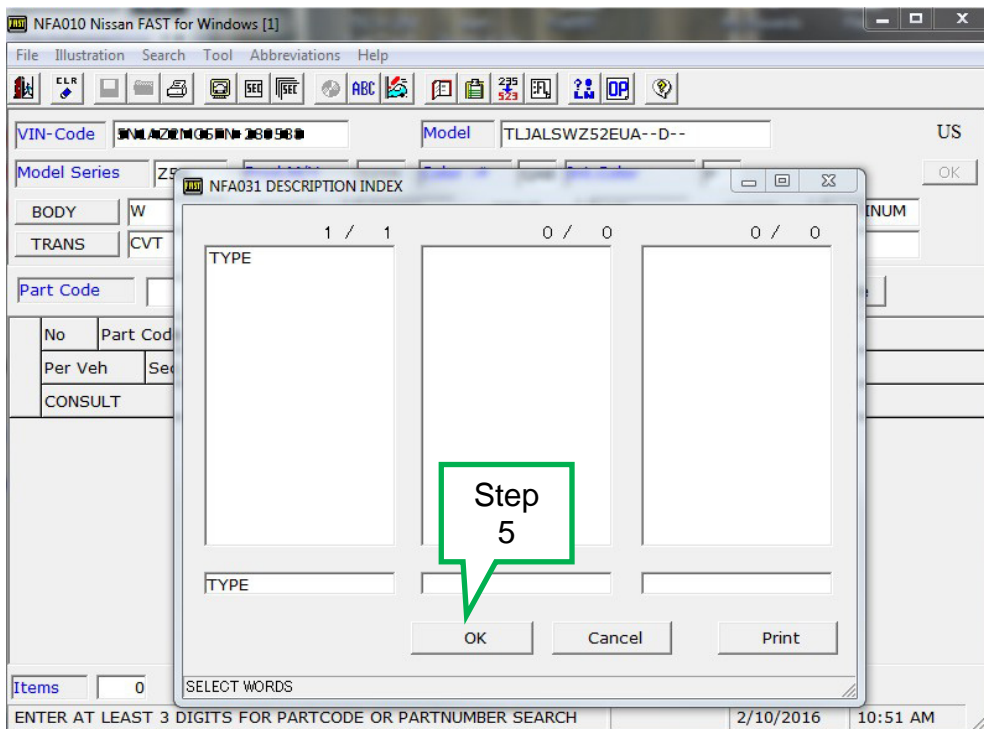


Figure 3

6. Select **TYPE-ID, ID NO FOR AIR BAG CONFIGURATION**.

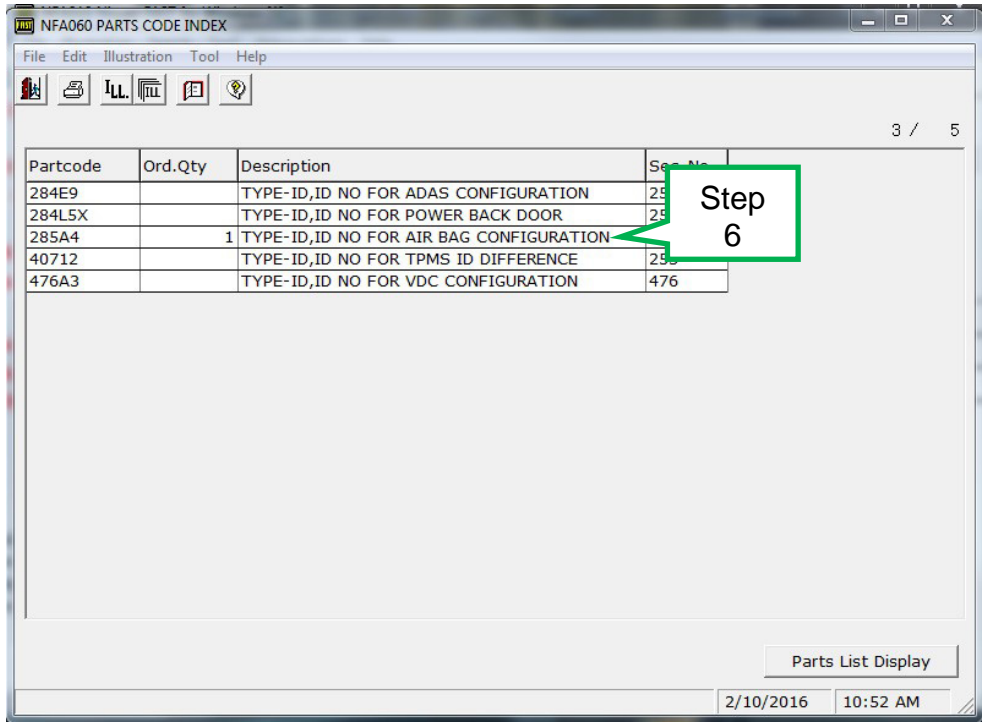


Figure 4

7. Select **CONSULT**.

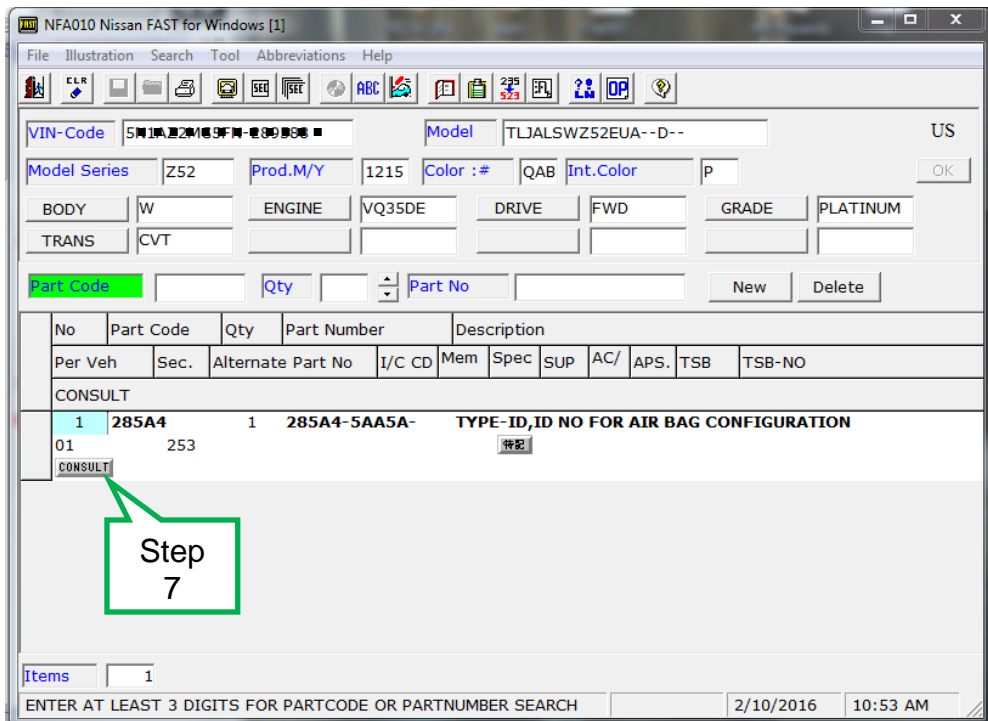


Figure 5

8. Load the CSV file onto a thumb drive.

- After selecting CONSULT in step 7, a screen showing your computers desktop with the CSV file should display (see Figure 8, this is the VIN specific configuration file).
- Do not change the file name or the file type.
- Load/save this CSV file onto a thumb drive.

**NOTE:** It is recommend, at the start, that the thumb drive be blank; all other files erased. This will make it easier to find the file later in this procedure.

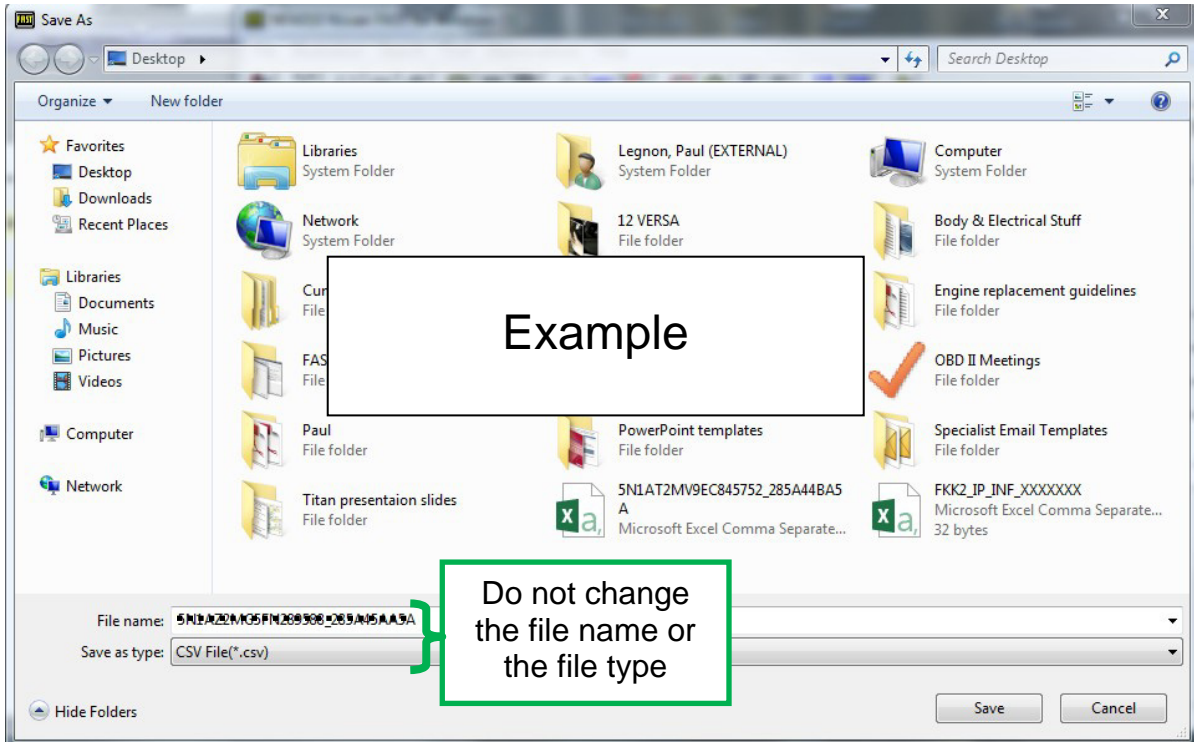


Figure 6

9. Plug the thumb drive (with the configuration file) into the CONSULT PC.

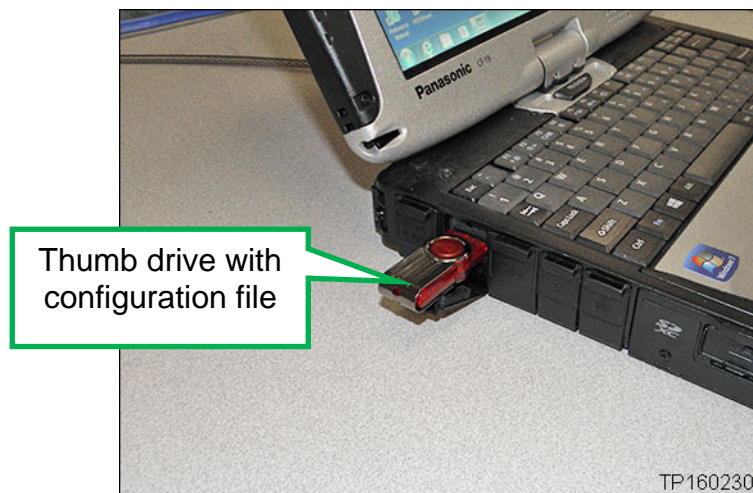


Figure 7

## Configure the New Air Bag Diagnosis Sensor Unit

**NOTE:** The following steps are to be performed after the Air Bag Diagnosis Sensor Unit has been replaced.

10. Connect the CONSULT-III plus (C-III plus) to the vehicle with the plus VI.

11. Turn the ignition ON.

12. Open / start C-III plus.

13. Wait for the plus VI to be recognized.

- The serial number will display when the plus VI is recognized.

14. Select **Re/programming, Configuration**.

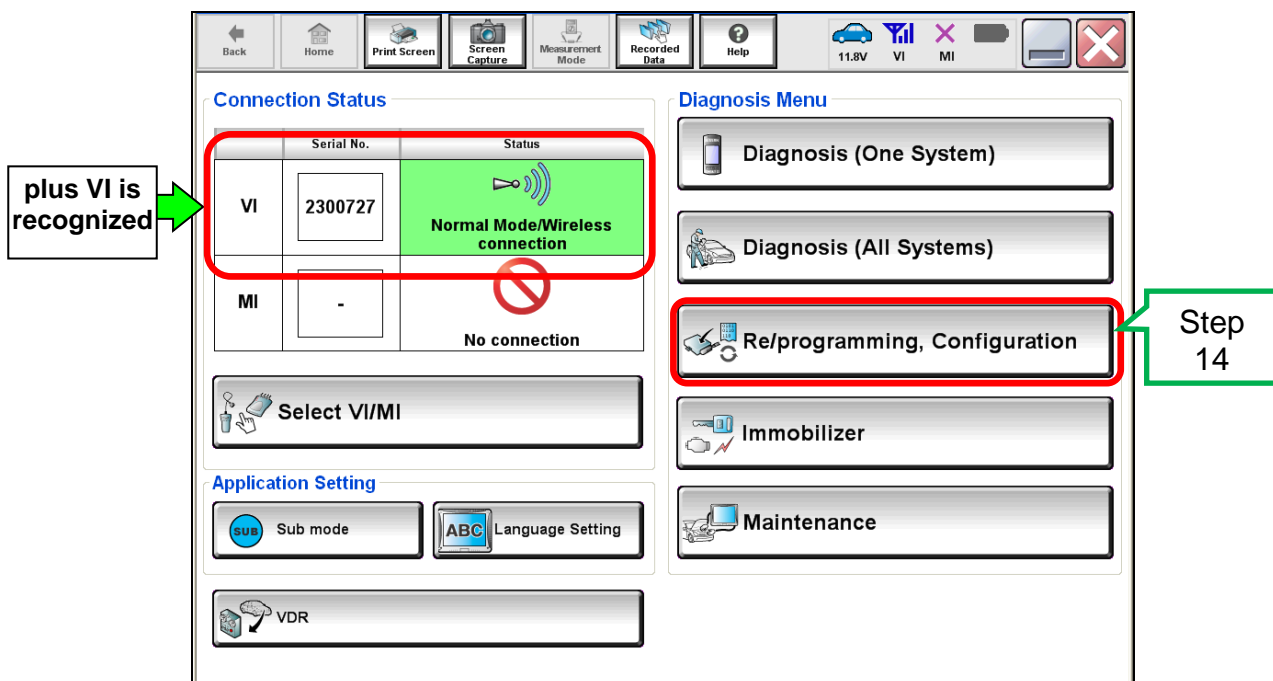


Figure 8

15. Use arrows (if needed) to view and read all precautions.

16. Check the box confirming the precautions have been read.

17. Select **Next**.

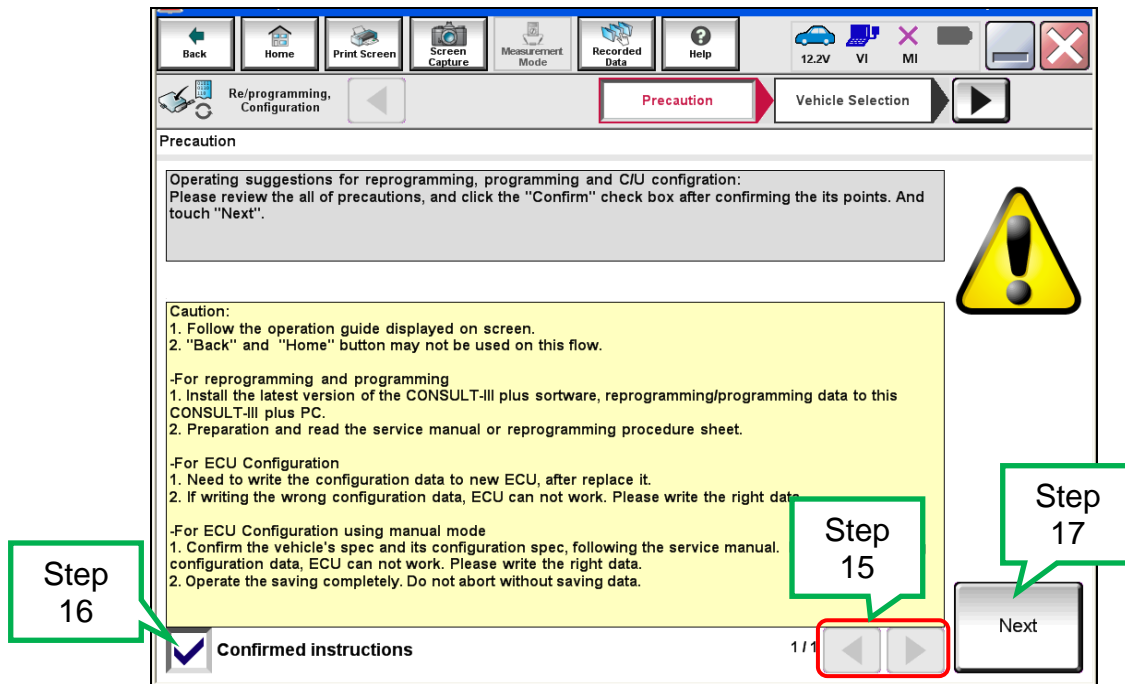


Figure 9

18. If the screen in Figure 10 displays, select **Automatic Selection(VIN)**.

- If the screen in Figure 10 does not display, skip to step 19.

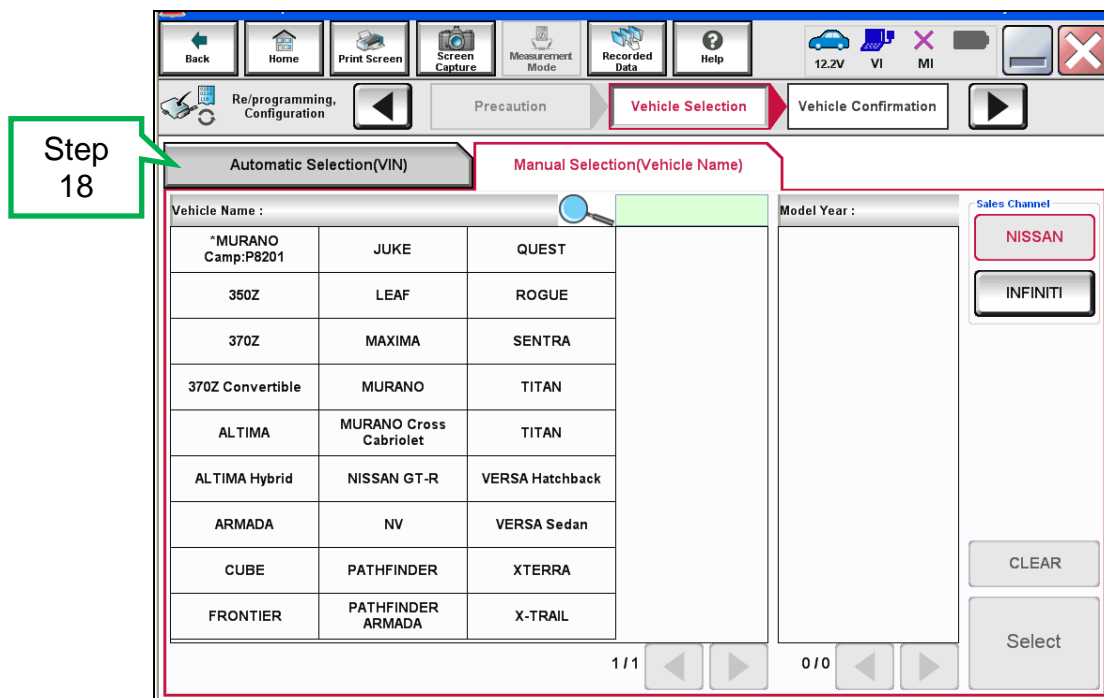


Figure 10

19. Make sure **VIN or Chassis #** matches the vehicle's VIN.

20. Select **Confirm**.

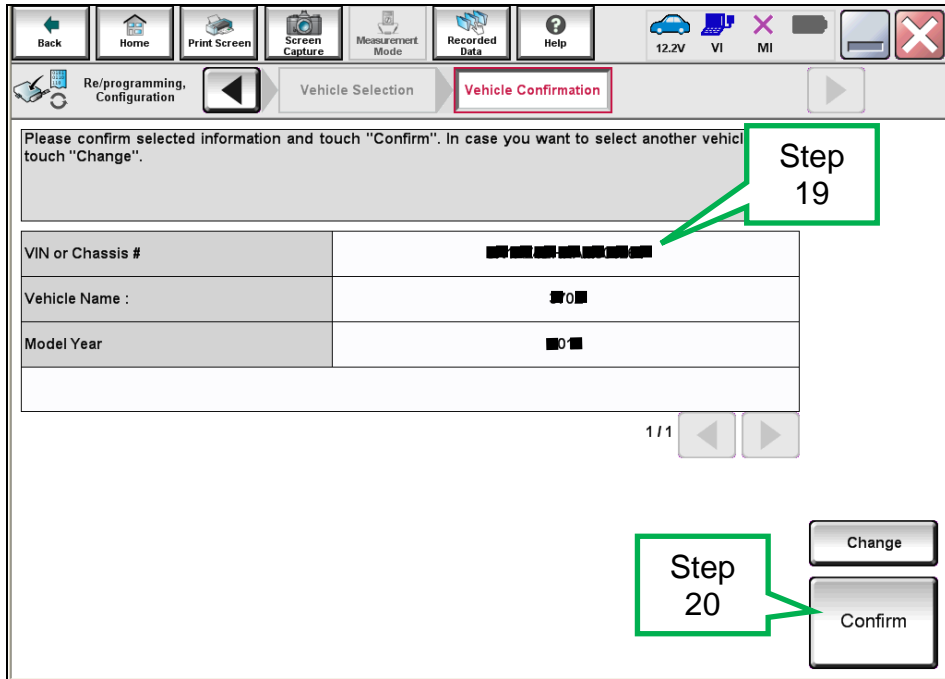


Figure 11

21. Select **Confirm**.

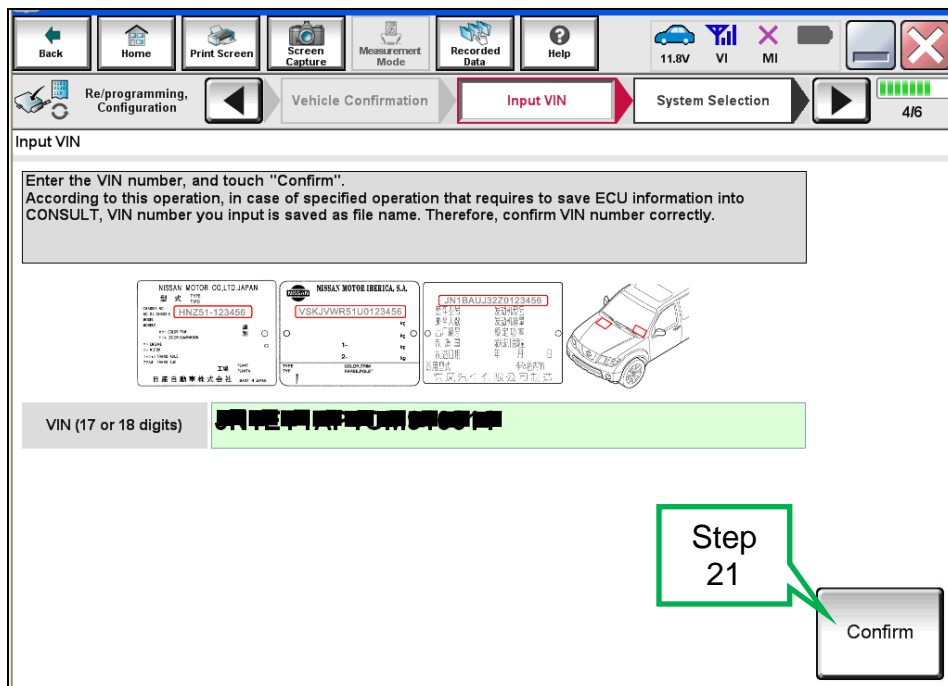


Figure 12



22. Select **AIR BAG**.

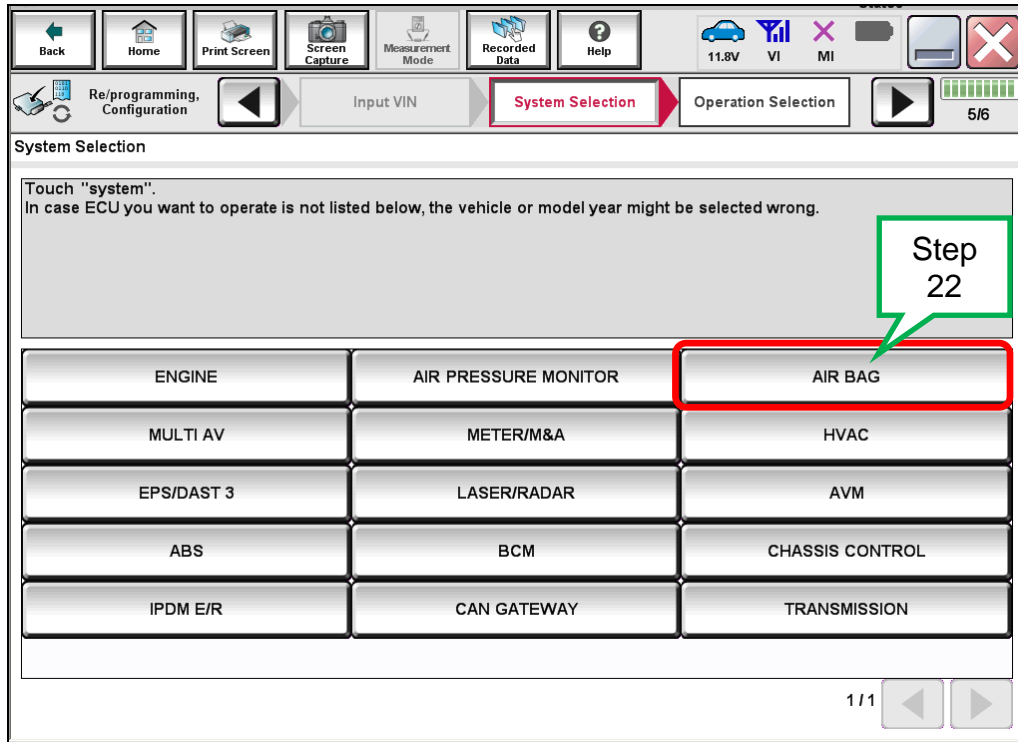


Figure13

23. Select **After ECU Replacement**, under vehicle configuration.

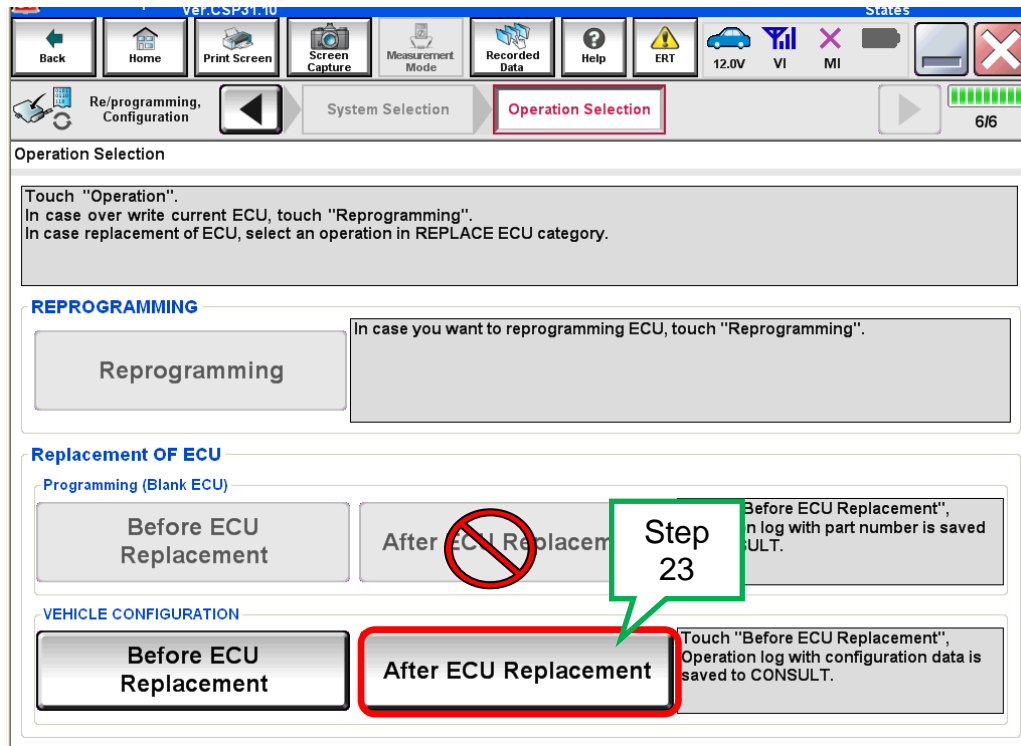


Figure 14

## 24. Select FAST linked.

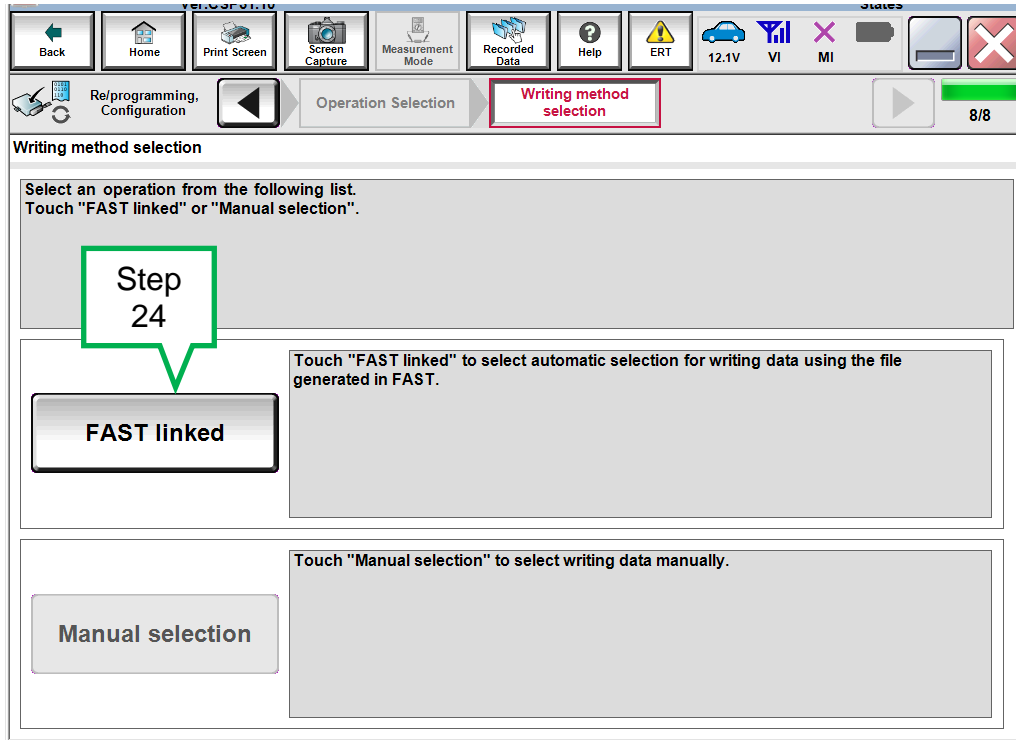


Figure 15

## 25. Select File Selection.

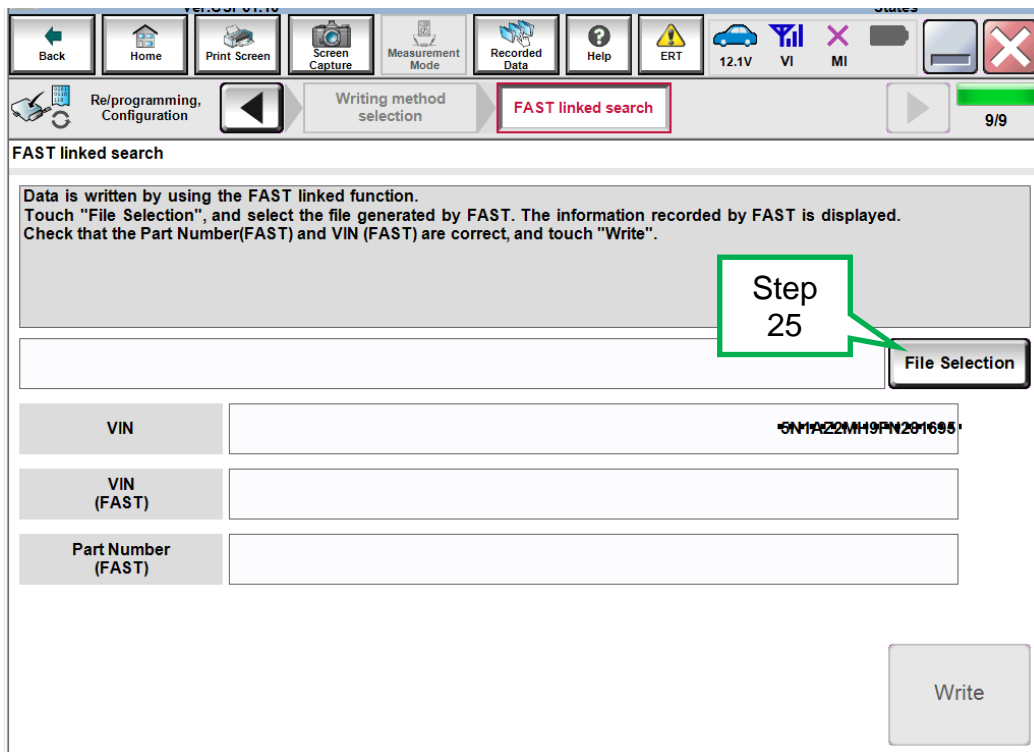


Figure 16

26. Navigate your CONSULT PC to the thumb drive and select the configuration file (see example in Figure 17).

- This will be the file that was loaded onto the thumb drive in step 8.

**NOTE:**

- Navigating a computer to a file on a thumb drive is a very common function, but can vary depending on the thumb drive and the individual computer set up.
- If you are unsure how to navigate to the file on your thumb drive, ask an associate in your shop who is more familiar with using a computer.

27. Select **Open**.

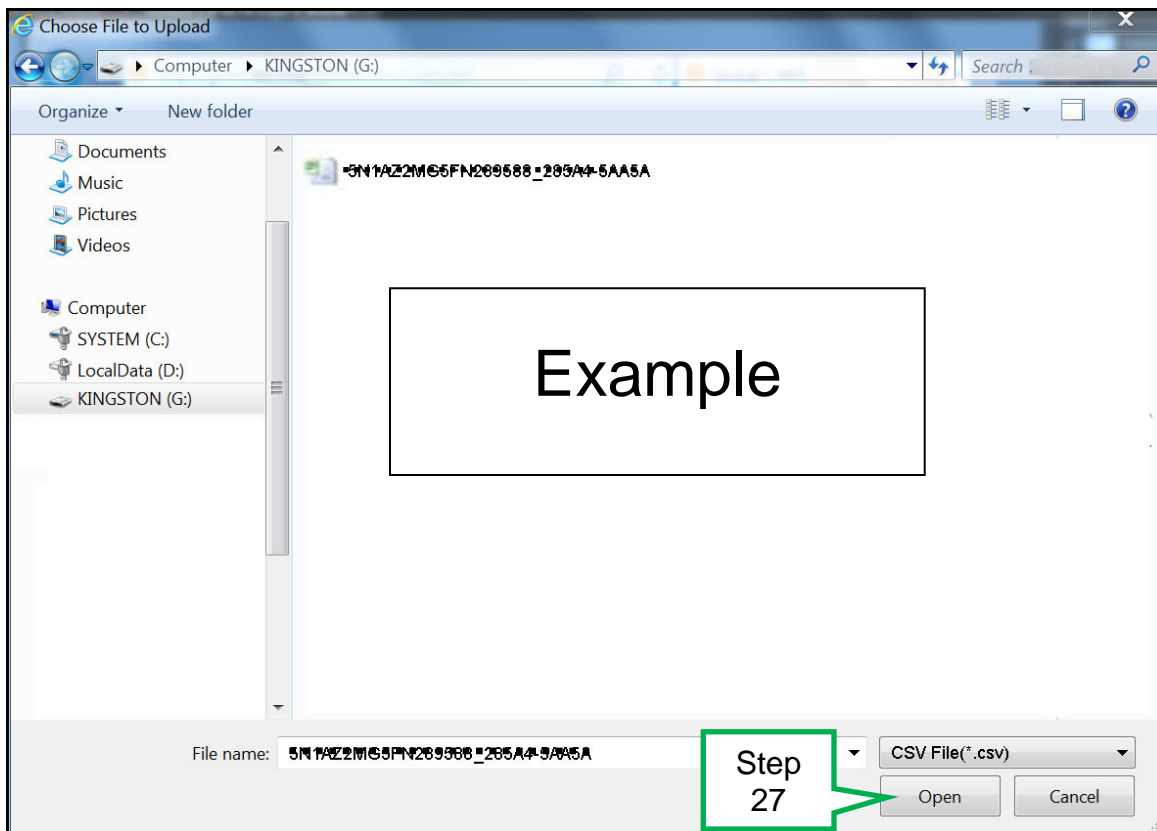


Figure 17

28. Select **Write**.

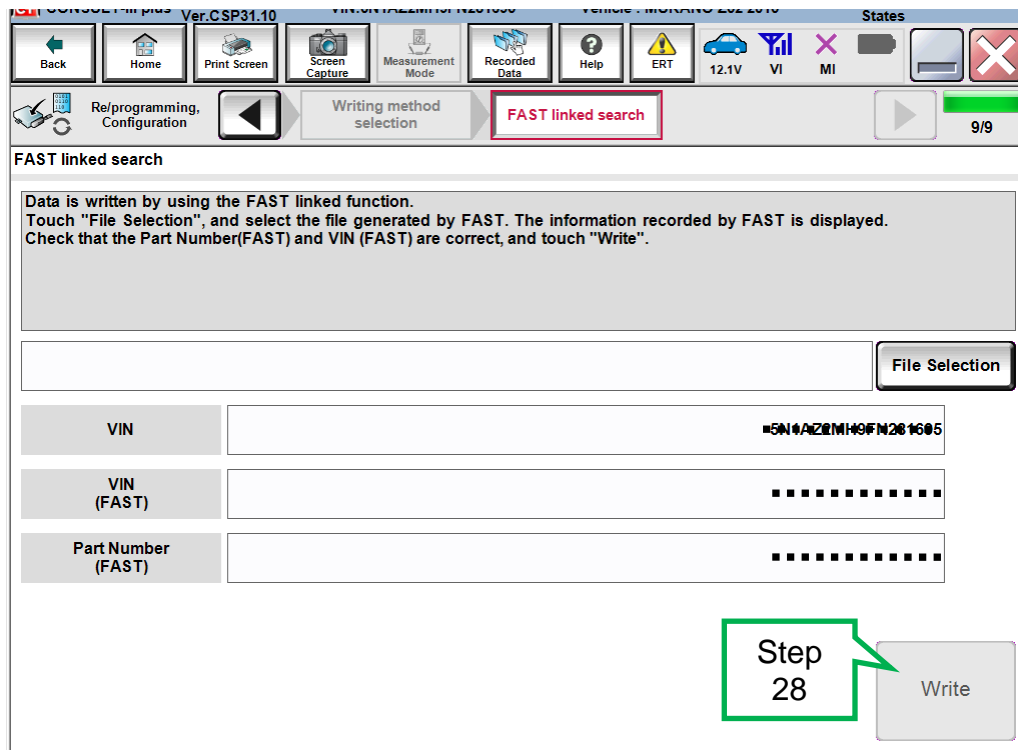


Figure 18

29. Select **OK**.

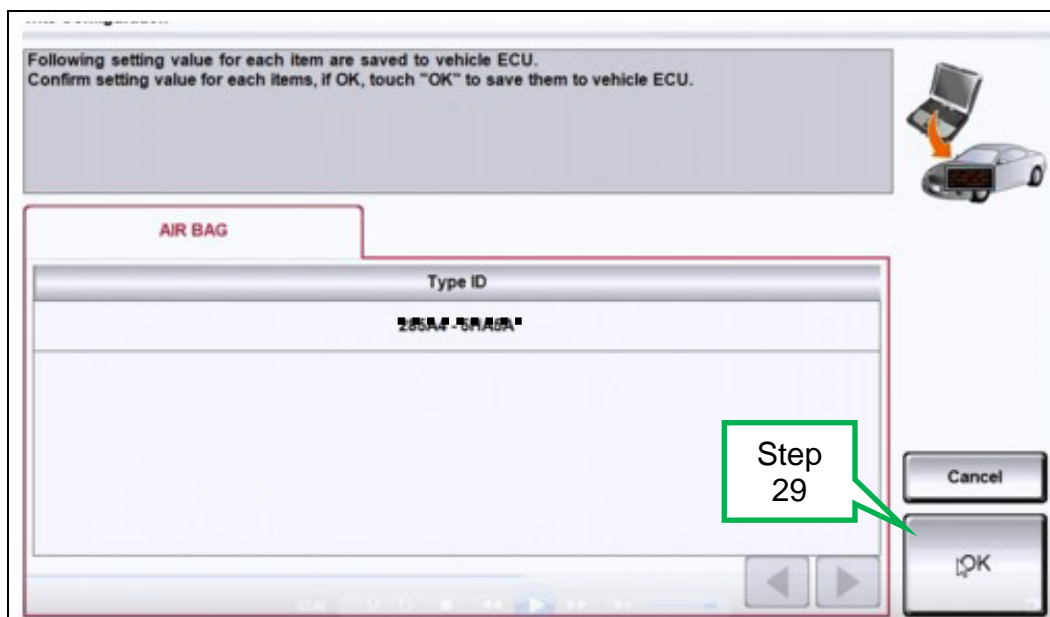


Figure 19

30. Wait for the data to transfer.

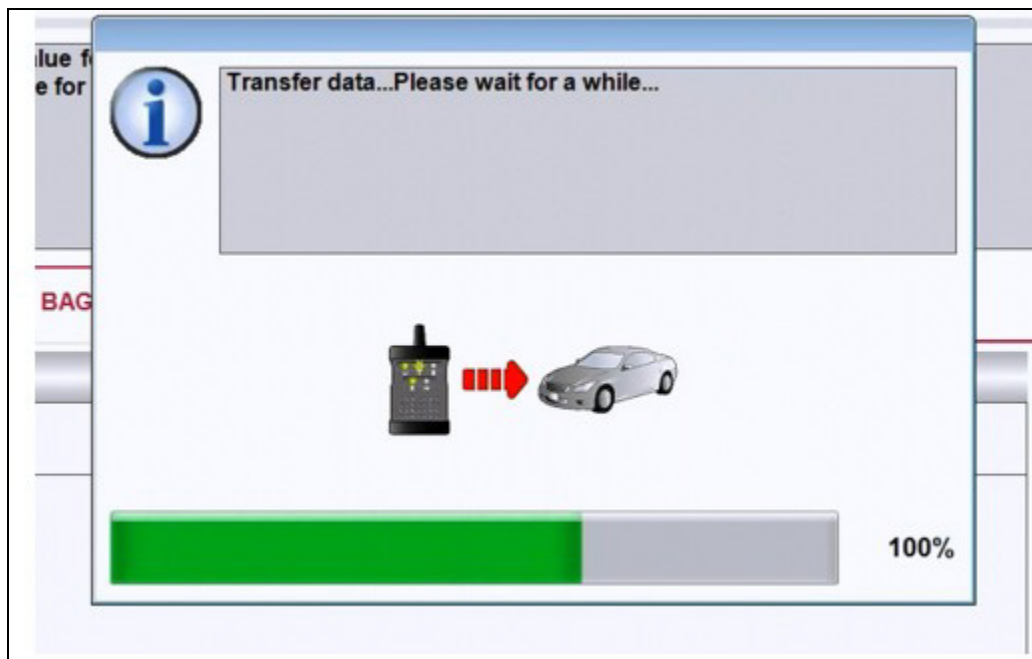


Figure 20

31. Select **End**.

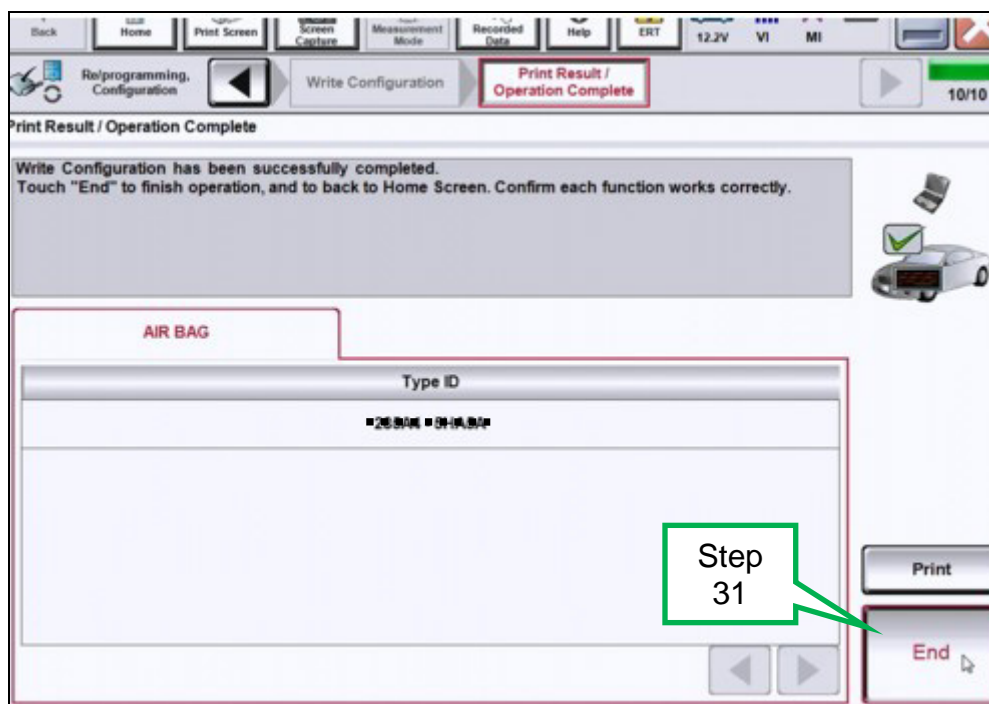


Figure 21

32. Clear any DTCs that may have stored during the procedure.