



SERVICE BULLETIN

Classification: HA15-001b	Reference: NTB15-045b	Date: March 21, 2016
------------------------------	--------------------------	-------------------------

2014-2016 ROGUE; MANUAL HVAC IMPROPER OPERATION

This bulletin has been amended. Changes have been made on all pages.
Please discard all previous versions.

APPLIED VEHICLES: 2014-2016 Rogue (T32) Equipped with Manual HVAC system

NOTE: Does not apply to the Rogue Select (S35)

IF YOU CONFIRM

There are no HVAC DTCs stored,

and

One of the following conditions:

- Air temperature from the HVAC vents does not match the temperature setting (warm air is discharged when cold is selected, or vice versa).

or

- Air is discharged from the incorrect location. For example, vent is selected but 100% of air is discharged to the foot or defrost.

NOTE: If HVAC DTC(s) are stored, this bulletin does not apply. Refer to the Electronic Service Manual for further information.

ACTION

Use CONSULT-III plus (C-III plus) to perform Door Motor Starting Position Reset.

Nissan Bulletins are intended for use by qualified technicians, not 'do-it-yourselfers'. Qualified technicians are properly trained individuals who have the equipment, tools, safety instruction, and know-how to do a job properly and safely. NOTE: If you believe that a described condition may apply to a particular vehicle, DO NOT assume that it does. See your Nissan dealer to determine if this applies to your vehicle.

SERVICE PROCEDURE

1. Connect the CONSULT PC to the vehicle with the plus VI.
2. Start C-III plus.
3. Start the engine.
 - **Keep the engine running during this procedure.**

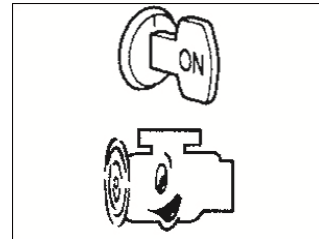


Figure 1

4. Navigate C-III plus to HVAC > Work Support.
5. Select **Door Motor Starting Position Reset**.
6. Select **Start**.

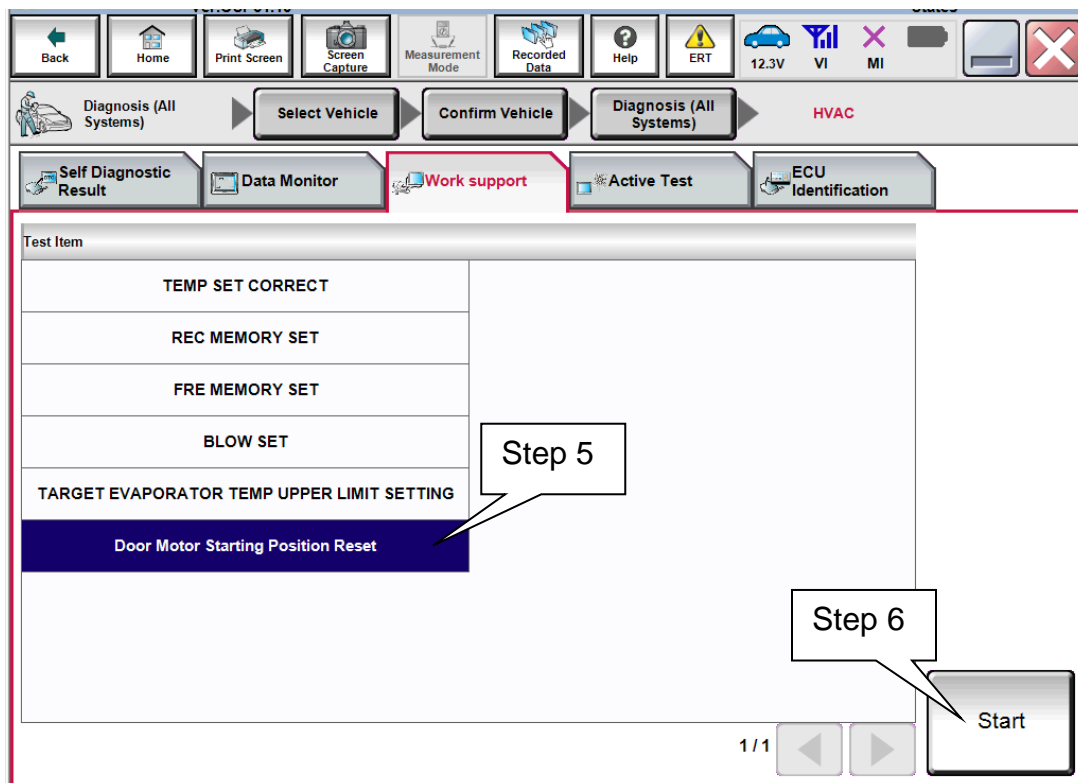


Figure 2

7. Select **Start**, to start the Door Motor Starting Position Reset.

- Keep the ignition ON and the engine running.

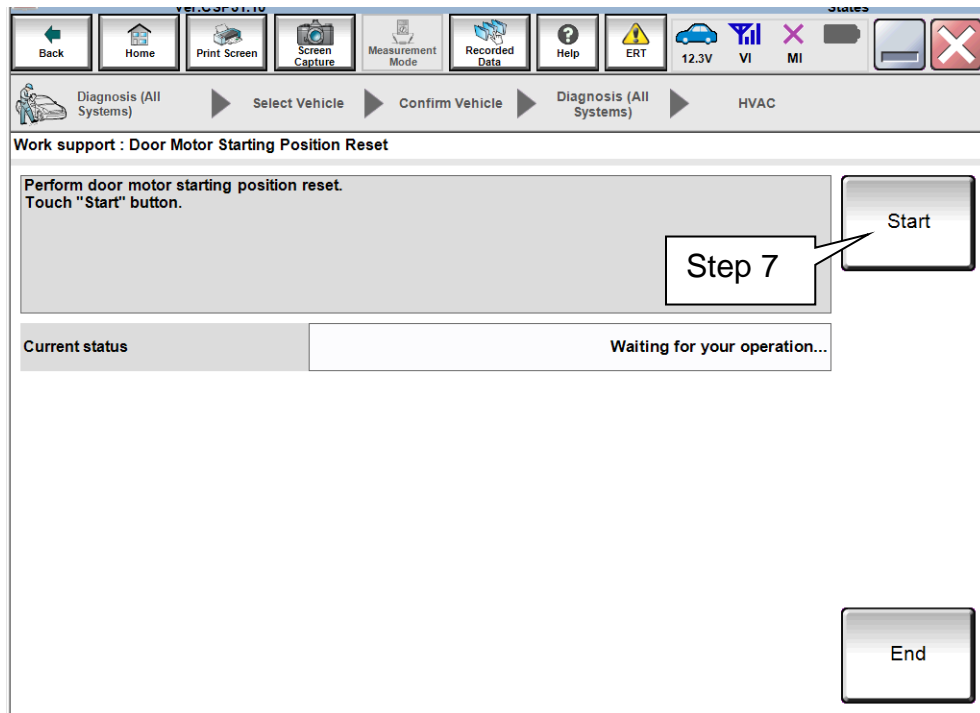


Figure 3

8. Wait for the Door Motor Starting Position Reset to complete (about 30 seconds).

9. Select **End**.

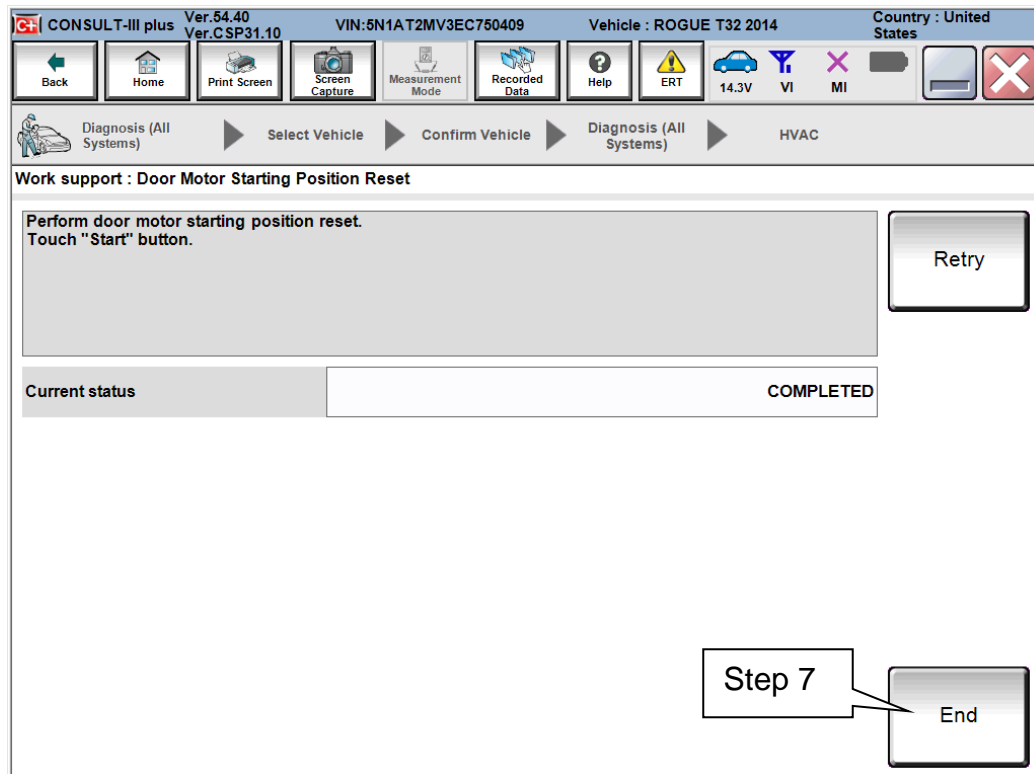


Figure 4

10. Confirm the HVAC controls now operate correctly.

- With the A/C ON, confirm outlet air temperature matches temperature setting at mid-point, full warm, and full cold.
- Confirm outlet air is discharged from the selected position; Vent, Floor, Defrost, and Bi-level.

11 Turn the ignition OFF.

12. Disconnect C-III plus from the vehicle.

13. Re-start the engine.

14. Again, confirm the HVAC controls operate correctly.

- With the A/C ON, confirm outlet air temperature matches temperature setting at mid-point, full warm, and full cold.
- Confirm outlet air is discharged from the selected position; Vent, Floor, Defrost, and Bi-level.

15. Turn the ignition OFF.

END

CLAIMS INFORMATION

Submit a Primary Operation (PO) type line claim using the following claims coding:

DESCRIPTION	OP CODE	SYM	DIA	FRT
Perform HVAC Door Motor Starting Position Reset	TX43AA	ZE	32	0.2 hrs.

