



NUMBER: 23-015-16 REV. A

GROUP: Body

DATE: April 13, 2016

This bulletin is supplied as technical information only and is not an authorization for repair. No part of this publication may be reproduced, stored in a retrieval system, or transmitted, in any form or by any means, electronic, mechanical, photocopying, or otherwise, without written permission of FCA US LLC.

THIS BULLETIN SUPERSEDES SERVICE BULLETIN 23-015-16, DATED APRIL 09, 2016, WHICH SHOULD BE REMOVED FROM YOUR FILES. ALL REVISIONS ARE HIGHLIGHTED WITH **ASTERISKS**** AND INCLUDE UPDATE TO PARTS REQUIRED AND ADDITION OF PARTS REIMBURSEMENT DETAILS.**

SUBJECT:

Water On Front Carpet Or In Rocker Side Sill

OVERVIEW:

This bulletin involves visually inspecting the sealer on the engine bulkhead area and water testing to diagnose leak path. Then repairing body seam leaks with sealer.

MODELS:

2015 - 2016 (KL) Jeep Cherokee

**NOTE: This bulletin applies to vehicles within the following markets/countries:
NAFTA.**

NOTE: This bulletin applies to vehicles built on or after February 15, 2015 (MDH 0215XX) and on or before November 13, 2015 (MDH 1113XX).

SYMPTOM/CONDITION:

The customer may describe damp or wet carpet in the front footwell or in the rocker sill. This condition is primarily found on the left side but may be on the right (Fig. 1) or both footwells. The cause of this leak may be due to a sealant void on the body seam, allowing water to enter the vehicle interior.



Fig. 1 Water in Front Footwell

Right side shown, left side similar

1 - Front footwell

DIAGNOSIS:

If the customer describes the symptom, perform the Repair Procedure.

PARTS REQUIRED:

| Qty. | Part No. | Description |
|--------|----------|------------------------------|
| 1 (AR) | NPN | Kent® High Tech Clear P10200 |

NOTE: **Each Kent® High Tech Clear P10200 will service approximately 2 sides of the vehicle.**

REPAIR PROCEDURE:

1. Raise and support the vehicle (Refer to 04 - Vehicle Quick Reference>Hoisting>Standard Procedure).
2. Remove the front tire and wheel assembly on side(s) where water is present in floor board (Refer to 22 - Tires and Wheels>Tires>Removal).

3. Remove inner fender well fasteners (Fig. 2) and move out of the way.



Fig. 2 Inner Fender Well

Right side shown, left side similar

1 - Fastener locations

2 - Inner Fender

-
4. Using a test air nozzle or equivalent, blow air around the bulkhead body seams . Look for gaps, disruptions or blemishes in the body seam sealer (Fig. 3).



Fig. 3 Body Sealer Leak Area

Right side shown, left side similar

5. Clean and prepare application area as needed before applying sealer. Using seam sealer (Kent products High-Tech clear #P10200 or equivalent), repair gaps in sealant ([Fig. 4](#)). You may have to cut away portion of vinyl sealer to expose and seal the leak path.

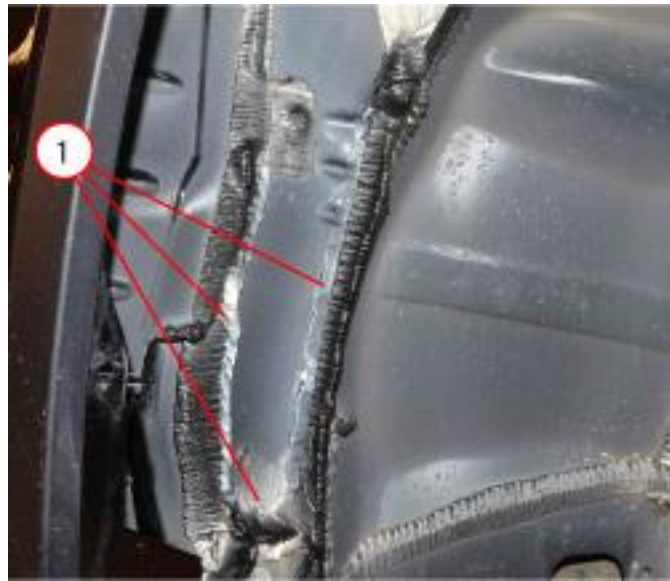


Fig. 4 Apply Kent Sealer

Right side shown, left side similar

1 - Apply on seam locations

6. Smooth out newly applied sealer with wood applicator (Fig. 5).



Fig. 5 Smooth Sealer With Wood Stick

Right side shown, left side similar

-
7. Verify seal repair is completed by applying water from an open hose to the windshield in an arc flow pattern. Allow water to cascade down the windshield and inspect for leaks.
 8. Repeat repair procedure as necessary to complete repair.
 9. Re-install the inner fender well.
 10. Install the front tire and wheel assembly (Refer to 22 - Tires and Wheels>Tires>Installation).

POLICY:

Reimbursable within the provisions of the warranty.

TIME ALLOWANCE:

| Labor Operation No: | Description | Skill Category | Amount |
|----------------------------|-------------------------------------------------------------------------------|---------------------------------|---------------|
| 23-50-35-94 | Body Seam, Wheel House - Inspect and Reseal One Front (1 - Semi-Skilled) | 6 - Electrical and Body Systems | 0.5 Hrs. |
| 23-50-35-95 | Body Seam, Wheel House - Inspect and Reseal Both Fronts (1 - Semi-Skilled) | 6 - Electrical and Body Systems | 0.8 Hrs. |

FAILURE CODE:

| | |
|----|----------------|
| ZZ | Service Action |
|----|----------------|

PART REIMBURSEMENT DETAIL:

| Part No: | Description |
|-----------------|------------------------------|
| **NPN | Kent® High Tech Clear P10200 |

NOTE: This part number is for reimbursement only and will need to be claimed for 1/2 the value of Kent® High Tech Clear P10200 for each side repaired or it will be rejected. If this is a non-MOPAR part or product, a copy of the invoice showing the purchase of the non-MOPAR part or product needs to be attached to the reimbursement claim.**