 <b>HYUNDAI</b>   NEW THINKING. NEW POSSIBILITIES.  <b>Technical Service Bulletin</b>	<b>GROUP</b> <b>CAMPAIGN</b>	<b>NUMBER</b> <b>16-01-014</b>
	<b>DATE</b> <b>MARCH 2016</b>	<b>MODEL(S)</b> <b>SONATA (LF)</b> <b>SONATA HYBRID</b> <b>(YF HEV)</b>
<b>SUBJECT:</b> FUEL FILLER DOOR OPENER REPLACEMENT (SERVICE CAMPAIGN TZ8)		

**★ IMPORTANT**

**\*\*\* Dealer Stock and Retail Vehicles \*\*\***

Dealers must perform this Service Campaign whenever an affected vehicle is in the shop for any maintenance or repair.

When a vehicle arrives at the Service Department, access Hyundai Motor America's "Warranty Vehicle Information" screen via WEBDCS to identify open Campaigns.

**Description:** On certain 2015MY Sonata (LF) and Sonata Hybrid (YF HEV) the fuel filler door may not function properly due to a malfunctioning actuator rod inside the fuel filler door assembly. This may affect the fuel door opening and/or closing functionality.

This bulletin describes the procedure to replace the fuel filler door opener for the Sonata (LF) and fuel filler door opener and the housing for the Sonata Hybrid (YF HEV).



**Applicable Vehicles:** Certain 2015 Sonata (LF) and 2015 Sonata Hybrid (YF HEV).

**PARTS INFORMATION:**

PART IMAGE	PART NUMBER	DESCRIPTION
	815902T000QQH	FUEL FILLER DOOR OPENER (SONATA) (LF)
	815903S000QQH	FUEL FILLER DOOR OPENER (SONATA HYBRID) (YF)
	815953S000QQH	HOUSING (SONATA HYBRID) (YF)

**CAUTION**

Wear protective goggles and gloves for protection when performing the procedures in this bulletin.

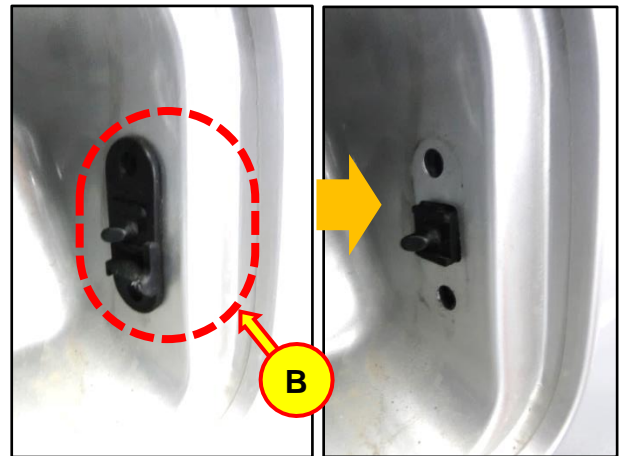
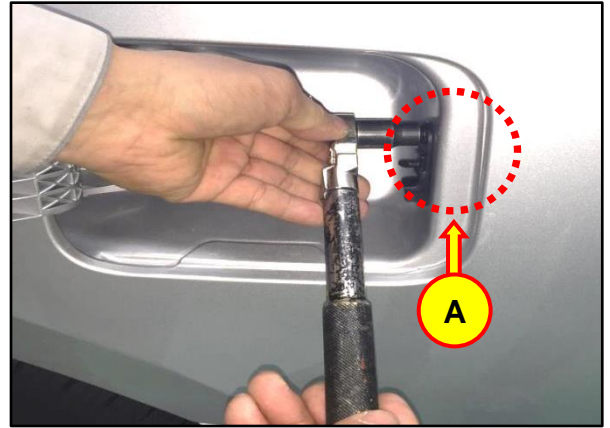
**WARRANTY INFORMATION:**

OP CODE	OPERATION	OP TIME
50C094R0	FUEL FILLER DOOR OPENER REPLACEMENT - SONATA	0.2 M/H
50C094R1	FUEL FILLER DOOR OPENER AND HOUSING REPLACEMENT – SONATA HYBRID	0.3 M/H

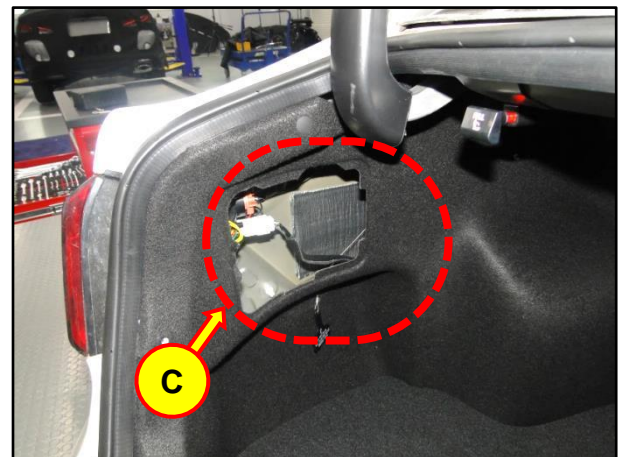
**NOTE:** Submit Claim on Campaign Claim Entry Screen

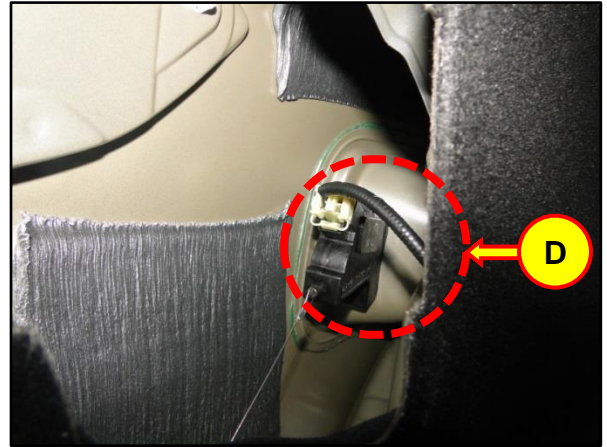
**SERVICE PROCEDURE FOR SONATA (LF):**

1. Open the fuel filler door and remove the opener mounting bolts (A), then the fuel filler door guard (B).



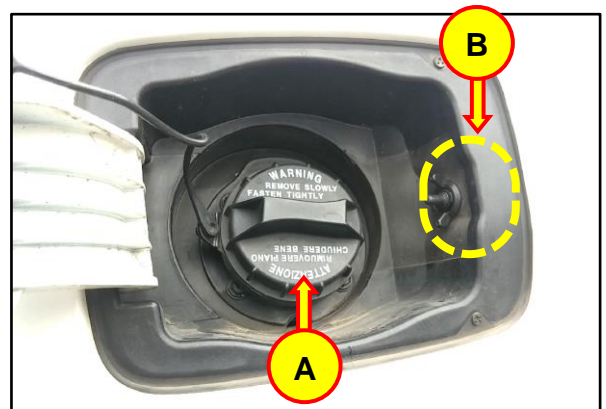
2. Remove the service cover (C), and then disconnect the opener actuator connector (D).  
  
Install the new fuel filler door opener. Put the removed parts back in reverse order of removal.  
  
Make sure the fuel filler door works properly by opening and closing it a few times.





## **SERVICE PROCEDURE FOR SONATA HYBRID (YF HEV)**

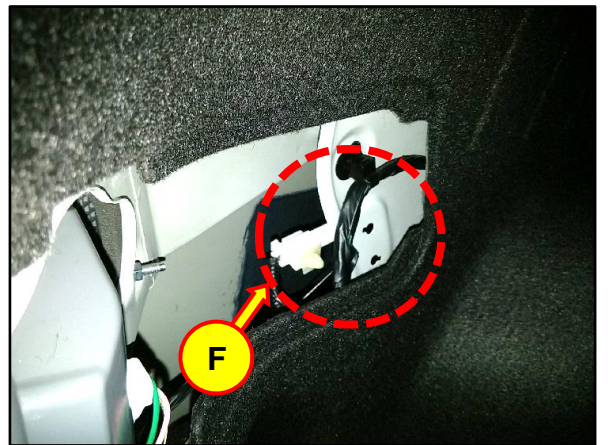
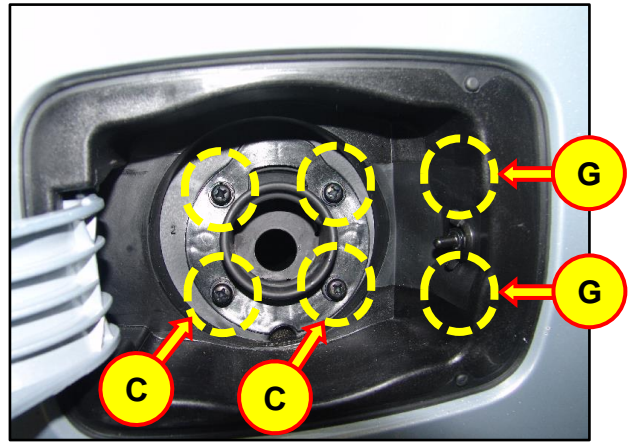
1. Open the fuel filler door.  
Remove the fuel filler cap (A), then the actuator rod holder (B) of the opener actuator.



2. Remove the mounting screws (C).

Remove the service cover (E), and then disconnect the opener actuator connector (F). Remove the fuel filler door opener after removing the two mounting screws (G).

Install the new fuel filler door opener.



3. Remove the fuel filler housing (D).



**\* NOTE**

To remove the housing (D), dismantle the housing (D) if necessary without damaging the exterior panels.



4. Install the new housing.

Reassemble all parts in the reverse order of removal.

Confirm proper operation of the fuel filler door by opening and closing it a few times.