



**NUMBER:** 05-002-16

**GROUP:** Brakes

**DATE:** February 13, 2016

*This bulletin is supplied as technical information only and is not an authorization for repair. No part of this publication may be reproduced, stored in a retrieval system, or transmitted, in any form or by any means, electronic, mechanical, photocopying, or otherwise, without written permission of FCA US LLC.*

**THIS BULLETIN SUPERSEDES SERVICE BULLETIN 05-004-14, DATED OCTOBER 04, 2014, WHICH SHOULD BE REMOVED FROM YOUR FILES. THIS IS A COMPLETE REVISION AND NO ASTERISKS HAVE BEEN USED TO HIGHLIGHT REVISIONS.**

**SUBJECT:**

Front Brake Moan Noise While Stopping In Reverse

**OVERVIEW:**

This bulletin involves replacing the front rotors and front brake components to correct a brake moan condition.

**MODELS:**

2015 - 2016 (UF) Chrysler 200

**NOTE: This bulletin applies to vehicles built on or before January 19, 2016 (MDH 0119XX) equipped with Anti-Lock 4-Wheel-Disc Brakes (sales code BRG).**

**SYMPTOM/CONDITION:**

The customer may experience a low frequency noise (300 Hz) such as a moan or howl from the front brakes only when the brakes are applied in reverse.

**DIAGNOSIS:**

If the customer describes the symptom, perform the Repair Procedure.

**PARTS REQUIRED:**

Qty.	Part No.	Description
2	68242624AA	Rotor, Brake, Front
1	68316498AA	Pad Kit (with new clips)
2 (AR)	68160691AA	Pin Kit
2 (AR)	68316497AA	Adapter
4 (AR)	06510023AA	Bolt, Hex Flange Head, M14X1.50X30.00

**NOTE: Vehicles built before December 04, 2015 require all the parts listed above, vehicles built between December 04, 2015 and January 19, 2016 already have the updated adapter bracket and pin kit.**

**REPAIR PROCEDURE:**

1. Raise and support the vehicle. (Refer to 04 - Vehicle Quick Reference/Hoisting/Standard Procedure).
2. Remove the front tire and wheel assemblies. (Refer to 22 - Tires and Wheels/Removal) (Fig. 1).

**NOTE: Be sure to review all warnings and cautions before proceeding, refer to the detailed information available in DealerCONNECT> TechCONNECT under: Service Info> 05- Brakes - Warning and 05- Brakes - Caution.**



**Fig. 1 Front Brake Components**

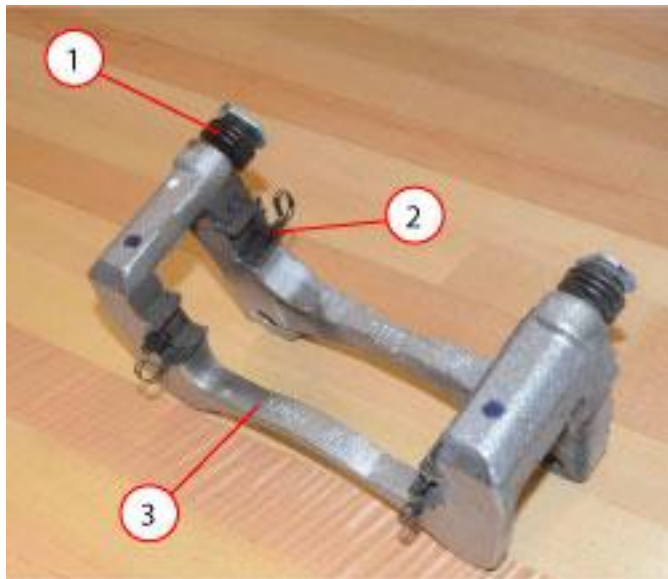
- 1 - Front Brake Rotor
- 2 - Front Brake Adapter Bracket
- 3 - Front Brake Caliper

- 
3. Remove the two brake caliper guide pin bolts.
  4. Remove the brake caliper from the brake caliper adapter bracket and position it aside. Secure caliper to nearby suspension part with wire. Do not allow brake hose to support caliper weight.
  5. Remove the brake pads from the caliper adapter bracket and discard (Fig. 2).



**Fig. 2 Remove Front Brake Pads**

6. Remove the two brake caliper adapter bolts and discard.
7. Remove the front brake caliper adapter ([Fig. 3](#)).



**Fig. 3 Front Brake Adapter Components**

- 1 - Front Brake Guide Pin and Boot
  - 2 - Front Brake Abutment Clip
  - 3 - Front Brake Caliper Adapter Bracket
-

8. Remove the brake rotor retainer screw and front brake rotor. Discard the front brake rotor (Fig. 4).



**Fig. 4 Front Brake Rotor and Retainer Screw**

- 1 - Front Brake Rotor
- 2 - Front Brake Rotor Hub Bolt

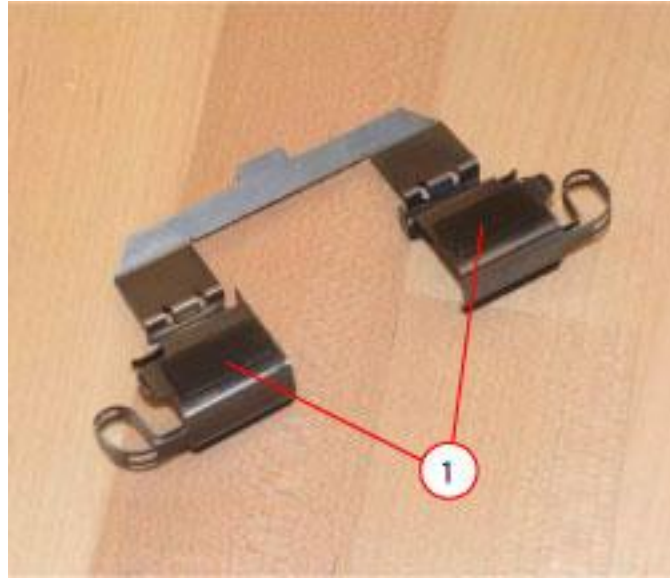
- 
9. Clean the hub face to remove any dirt or corrosion where the rotor mounts.
  10. Install the new brake rotor onto the hub.
  11. Install the brake rotor to hub bolt and tighten to 20 N·m (15 ft lbs.).
  12. Was the vehicle built before December 04, 2015?
    - a. YES>>> Install the new brake caliper adapter bracket and new front brake caliper slide pins. Use grease packets supplied in front brake caliper slide pin kit.
    - b. NO>>> Install the original brake caliper adapter bracket.

**NOTE: Front brake caliper slide pins should be free from debris and lightly lubricated with the grease that came with the pin kit, per caliper slide pin.**

13. Tighten brake caliper adapter bracket bolts to 175 N·m (129 ft lbs.).

**NOTE: The brake caliper adapter bracket bolts must be replaced with new.**

14. Install the abutment shims (Fig. 5) onto the brake caliper adapter bracket (Fig. 6).



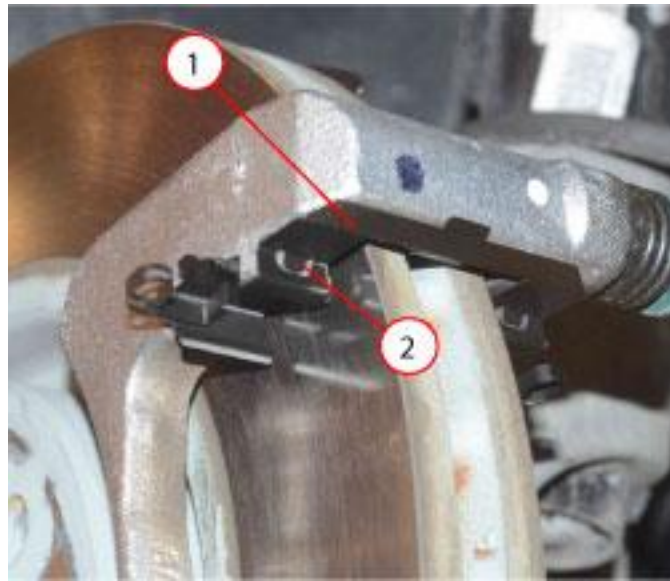
***Fig. 5 New Front Brake Abutment Clip***

1 - Added Rubber Pads

---

**NOTE: Ensure pad clip retention feature clicks into notch on anchor (should hear a click when fully seated).**

**NOTE: The updated abutment clips with rubber pads, that come with the front brake pad kit, will need to be installed in the top position of the brake caliper adapter bracket.**



**Fig. 6 New Front Brake Clip mounted in Leading Location**

- 1 - Front Brake Abutment Shim Mounted In Top Position
- 2 - Pad Clip Retention Tab

---

**NOTE: Be sure to check brake fluid level in brake reservoir to avoid overflow.**

15. Completely retract the caliper piston back into the bore of the caliper.
16. Install the new brake pads onto the brake caliper adapter bracket.
17. Install the front brake caliper onto the front brake caliper adapter bracket.

**CAUTION: Use care when installing the caliper onto the adapter bracket to avoid damaging the guide pin boots.**

18. Tighten the front brake caliper guide pin bolts to 35 N·m (26 ft lbs.).
19. Install the tire and wheel assembly. (Refer to 22 - Tires and Wheels>Installation).
20. Repeat for other side.
21. Pump the brake pedal several times before moving the vehicle to set the pads to the brake rotor.
22. Check and adjust the brake fluid level in the reservoir as necessary.
23. Road test the vehicle and make several stops to seat the brake pads to the rotor.

**POLICY:**

Reimbursable within the provisions of the warranty.

**TIME ALLOWANCE:**

<b>Labor Operation No:</b>	<b>Description</b>	<b>Skill Category</b>	<b>Amount</b>
05-21-10-9T	Replace Front Brake Rotors and Front Brake Pads Only (2 - Skilled)	4 - Chassis	0.8 Hrs.
05-21-10-9U	Replace Front Brake Rotors, Pads and Hardware (2 - Skilled)	4 - Chassis	0.9 Hrs.

**FAILURE CODE:**

ZZ	Service Action
----	----------------