

Technical product information

Topic	Continental Series, Flying Spur and Mulsanne - Main harness identification
Market area	Worldwide Bentley (1WBE)
Brand	Bentley
Transaction No.	2038035/1
Level	EH
Status	Approval
Release date	

New customer code

Object of complaint	Complaint type	Position
Overall vehicle -> Labelling	component / consumables	
Overall vehicle -> Labelling	visual appeal / surface	
Electrical power, electric system, data transfer -> Power supply	functionality	
Electrical power, electric system, data transfer -> Data bus systems	component / consumables	
Electrical power, electric system, data transfer -> Power supply	visual appeal / surface	
Lighting system, signalling -> Exterior illumination -> Tail light cluster	functionality -> partially without function	

New workshop code

Object of complaint	Complaint type	Position
Electrical power, electric system, data transfer -> Main line harnesses -> Rear harness	component / consumables -> damaged	
Electrical power, electric system, data transfer -> Main line harnesses -> Interior harness	component / consumables -> damaged	rear left
Electrical power, electric system, data transfer -> Function-specific line harnesses -> Tail light harness	component / consumables -> damaged	

Vehicle data

Continental Series, Flying Spur and Mulsanne

Sales types

Type	MY	Brand	Designation	Engine code	Gearbox code	Final drive code
39*	2012	E		*	*	*
39*	2013	E		*	*	*
39*	2014	E		*	*	*
39*	2015	E		*	*	*
39*	2016	E		*	*	*
39*	2017	E		*	*	*
39*	2018	E		*	*	*
3W*	2010	E		*	*	*
3W*	2011	E		*	*	*
3W*	2012	E		*	*	*
3W*	2013	E		*	*	*
3Y2*	2010	E		*	*	*
3Y2*	2011	E		*	*	*
3Y2*	2012	E		*	*	*
3Y2*	2013	E		*	*	*
3Y2*	2014	E		*	*	*
3Y2*	2015	E		*	*	*
3Y2*	2016	E		*	*	*
3Y2*	2017	E		*	*	*
3Y2*	2018	E		*	*	*
4W2*	2014	E		*	*	*
4W2*	2015	E		*	*	*
4W2*	2016	E		*	*	*
4W2*	2017	E		*	*	*
4W2*	2018	E		*	*	*

Chassis numbers

Manufacturer	Filler	Type	Filler	MY	Factory	From	To	Prod from	Prod to
SCB	*	ZA	*	F	*	000001	999999		
SCB	*	3W	*	F	*	000001	999999		
SCB	*	3W	*	G	*	000001	999999		
SCB	*	ZA	*	G	*	000001	999999		
SCB	*	ZA	*	H	*	000001	999999		
SCB	*	3W	*	H	*	000001	999999		
SCB	*	3W	*	I	*	000001	999999		
SCB	*	ZH	*	*	C	000001	999999		
SCB	*	3Y	*	*	C	000001	999999		
SCB	*	3W	*	C	*	000001	999999		
SCB	*	ZA	*	C	*	000001	999999		
SCB	*	ZA	*	D	*	000001	999999		
SCB	*	3W	*	D	*	000001	999999		
SCB	*	3W	*	E	*	000001	999999		
SCB	*	ZA	*	E	*	000001	999999		

Documents

Document name
master.xml

-

Customer statement / workshop findings

Should an issue be diagnosed or reported regarding any part of the vehicles main harness or engine harness resulting in a requirement to raise a DISS ticket, please follow all instructions within this TPI to ensure that your Bentley Motors Technical Service Centre (TSC) receives all required and relevant information.

Technical background

In order for the Bentley Motors Technical Service Centre (TSC) to resolve any issues relating to the vehicles main harness or engine harness please follow the instructions within this TPI.

Refer to **Section 1** for the main vehicle harness identification label location

Refer to **Section 2** for the engine harness identification label location

IMPORTANT NOTE: It is only a requirement to provide photographs of the main and engine harness label if there is an issue with both harnesses or harness componentry.

The main harness information labels on all vehicles which are covered within this TPI are attached to the harness at the same location regardless of model.



Due to varying models, engine and drive derivatives the engine identification harness label location will be as detailed within the instructions, all images within this TPI are for photographic purposes only the actual label information and label format may differ from those shown.

Production change

Not applicable

Measure

Section 1 - Main harness information, Continental Series and Flying Spur

The main harness label is attached to the branch off section which connects to the left hand rear lamp (Figure 1)

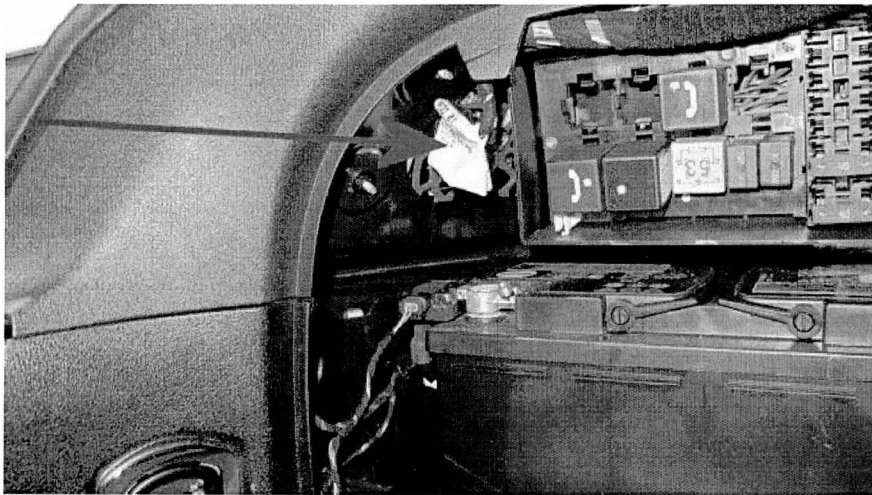


Figure 1

1. Please ensure that clear photographs of the main harness labels as Figures 2 - 3 and 4 are attached to the DISS ticket before submitting

Figure 2 shows the front face of the label which includes part number information

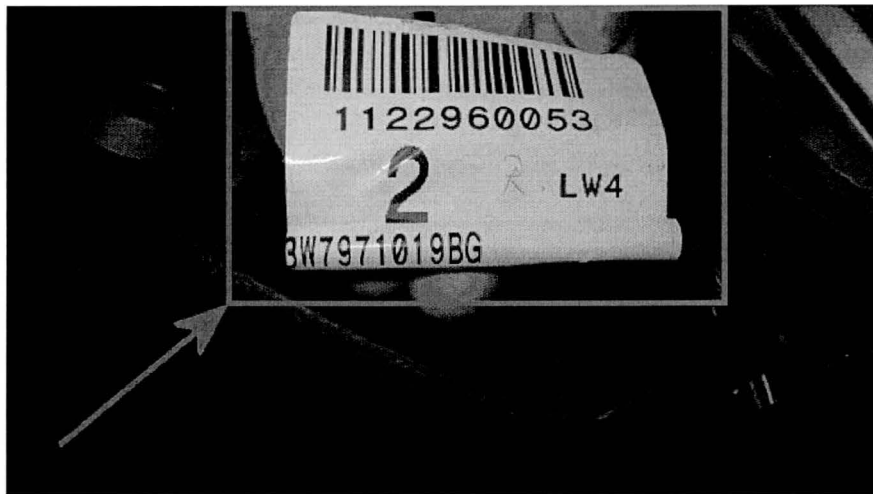


Figure 2

Figure 3 shows the opposing side of the label which details manufacturing information

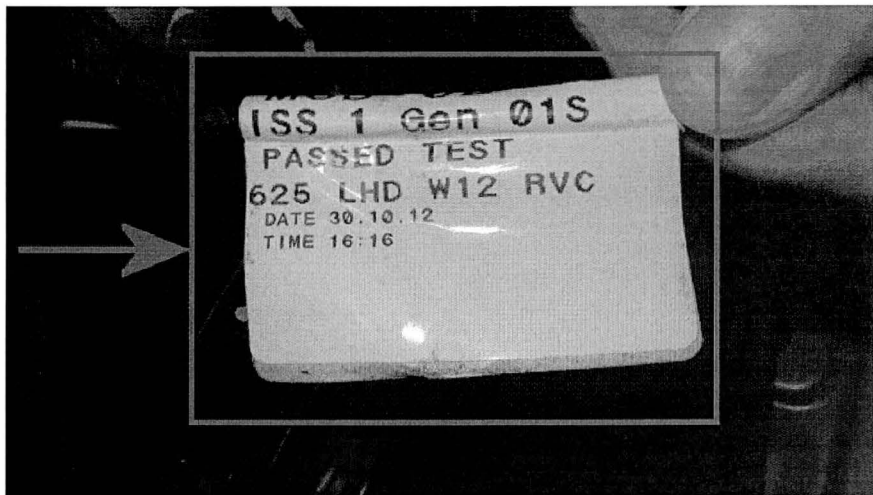


Figure 3

Figure 4 shows the MOD number

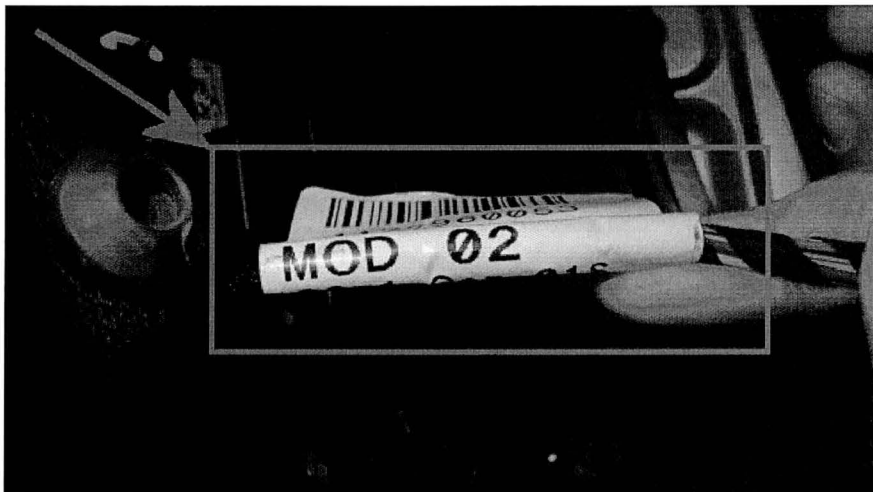


Figure 4

Engine harness information – Continental Series and Flying Spur

1. To gain access to the Continental Series and Flying Spur engine harness labels remove the plenum cover - Refer to the workshop manual Rep.Gr 87 - Plenum cover to remove and fit

W12 - The engine identification label is fitted to the branch off section within the plenum next to the 8 way electrical connection (Figure 5)

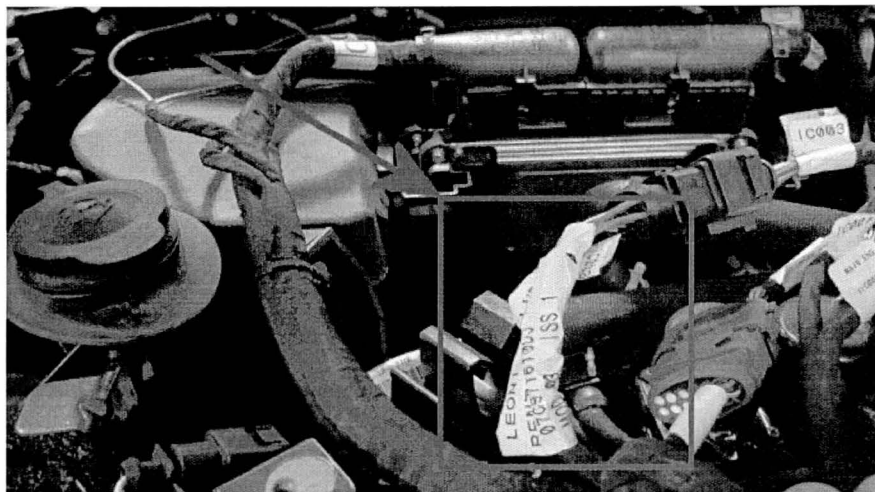


Figure 5

V8T – The engine identification label is fitted to the earth lead branch off section within the plenum (Figure 6)



Figure 6

V8T and W12 - To help in clarifying between the engine harness identification label and any other labels within the nearby vicinity, the engine identification label has a Bentley part number printed on it the width of the label is 62mm (Figure 7)

IMPORTANT: For all engine harness issues please attach photographs of the information shown on both sides of the label as shown in Figures 7 and 8.

Depending on how the label is attached, label content and size numerous photographs may be required to ensure all of the label information is included.



Figure 7

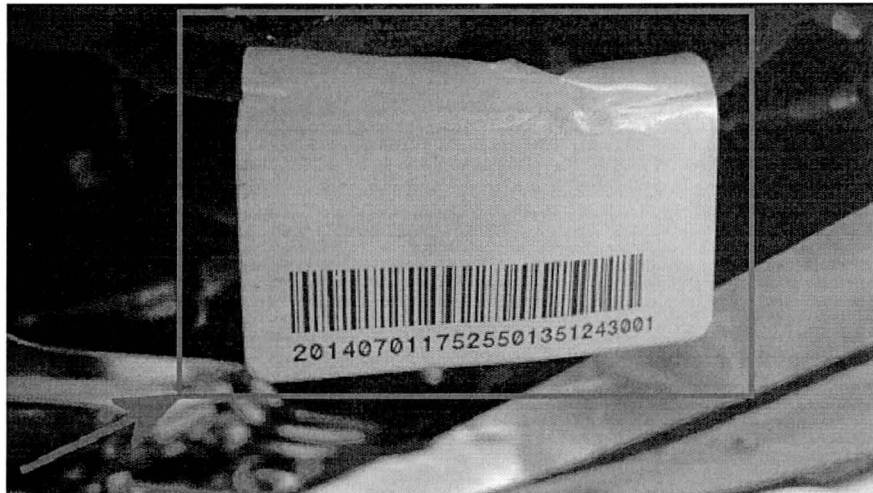


Figure 8

Engine harness information - Mulsanne

1. To gain access to the Mulsanne engine harness label remove the main engine cover and left hand side cover - Refer to the workshop manual Rep.Gr 10 – Engine covers to remove and fit

- The engine harness label is attached to the earth lead branch off section which connects to the bulkhead earth studs on the left hand side of the bulkhead next to the engine bay fusebox (Figure 9) due to the fitting location of the label access is difficult as the label is located under the engine bay fusebox

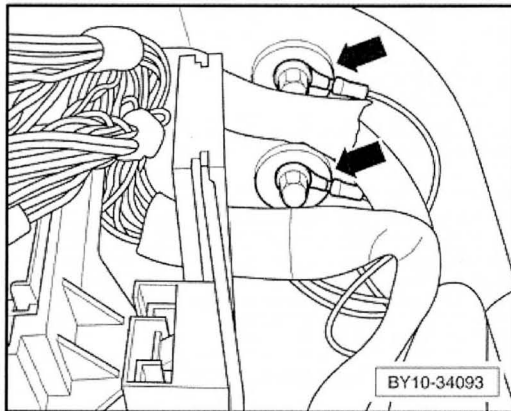


Figure 9

- Disconnect the two bulkhead earth leads, ensure that when the earth leads are reconnected they are fitted back to the original position

- Manoeuvre the earth leads from under the fusebox as Figure 10

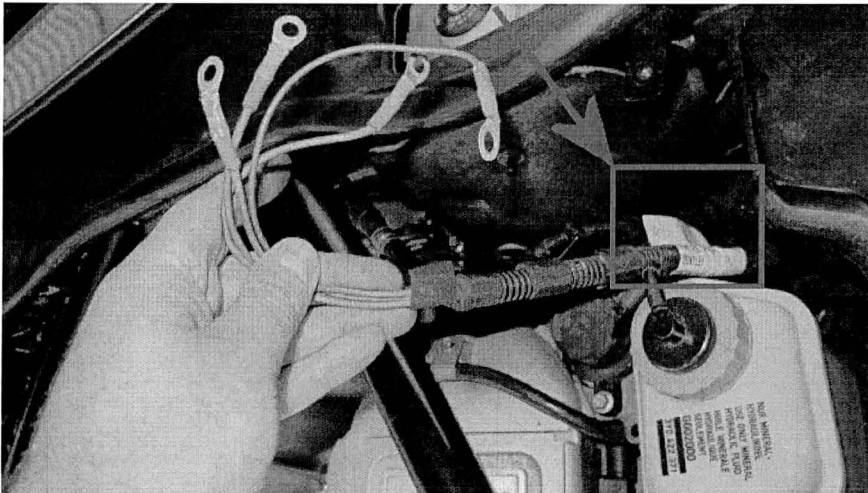


Figure 10

- Manoeuvre the earth leads back under the engine bay fusebox and secure the earth leads back to the applicable earth studs

- Ensure clear photographs of the label information is provided within the DISS ticket as shown in Figure 11 and 12



Figure 11

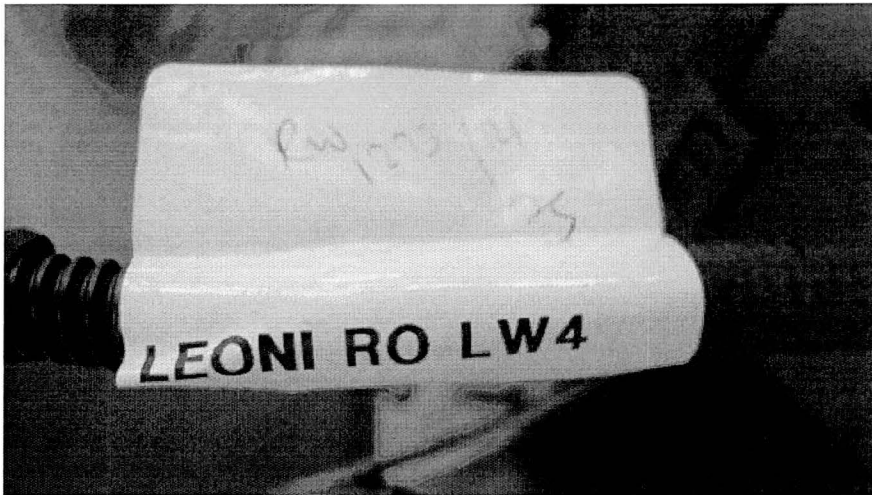


Figure 12