

Technical product information

Topic	Mulsanne front suspension - control module parameter updates
Market area	Worldwide Bentley (1WBE)
Brand	Bentley
Transaction No.	2032620/1
Level	EH
Status	Approval
Release date	

New customer code

Object of complaint	Complaint type	Position
Running gear -> Shock absorber/suspension control	functionality	
Running gear -> Shock absorber/suspension control -> Self-levelling suspension	functionality -> without function / defect	

New workshop code

Object of complaint	Complaint type	Position
Running gear -> Self-levelling suspension, pitch and roll compensation -> Ride height / shock absorber control unit	functionality -> defective function sequence	
Running gear -> Self-levelling suspension, pitch and roll compensation -> Ride height / shock absorber control unit	functionality -> without function / defect	

Vehicle data

Mulsanne

Sales types

Type	MY	Brand	Designation	Engine code	Gearbox code	Final drive code
3Y2*	2011	E		*	*	*
3Y2*	2012	E		*	*	*

Chassis numbers

Manufacturer	Filler	Type	Filler	MY	Factory	From	To	Prod from	Prod to
SCB	*	3Y	*	C	C	000001	016518		
SCB	*	ZH	*	C	C	000001	016518		

Documents

Document name
master.xml
12-2011.pdf
diagnosticcommunication042012svmfileupdateenglish.pdf

Customer statement / workshop findings

The air suspension warning light (Figure 1) is illuminated and/or event codes C103429 (Front left hand ride height sensor) and C103529 (Front right hand ride height sensor) are present within the air suspension control module.



Figure 1

Technical background

The parameters of the front ride height sensors are insufficient, this TPI describes the process which must be followed should the air suspension warning light be evident and/or the suspension control module event codes are logged relating to the front ride height sensors.

IMPORTANT: When carrying out this TPI, VAS PC must be used. Do not use the Offboard Diagnostic Information System Service. The parameter update settings required for this TPI cannot be supported by the Offboard Diagnostic Information System Service.

Please ensure that the Offboard Diagnostic Information System Service programme is completely shut down Do Not run the Offboard Diagnostic Information System Service at the same time as VAS PC as this will result in the need to completely uninstall and reinstall the Offboard Diagnostic Information System Service programme.



To carry out this TPI your VAS Diagnostic machine must have Version 19.04 installed. The attached SVM Diagnostic communication must be applied to your VAS Diagnostic machine (if not already) the Diagnostic communication can also be found on BICS, the Reference number is 97670.

Please make sure the communication is followed to the end.

Production change

All cars after VIN SCBBA63Y7CC [REDACTED] have the specified suspension parameters installed at the time of production.

Measure

1. Referring to Figure 2, insert the single ignition key into the reader with the blade folded away until it 'clicks' into place and check the key is securely located within the reader



Figure 2

- Press the Start/Stop switch on the centre console to switch on the ignition, Do not switch off the ignition until the parameter update is complete

NOTE: When conducting software updates it is recommended to attach a visible warning sign to the vehicle warning other people within the Dealership that an update is in progress, the ignition - battery charger and any associated equipment must not be removed or switched off whilst the update is in progress.

2. Before starting the software update ensure the drive dynamics switch is in Comfort mode (Figure 3) and the ride height is at the lowest setting as shown in Figure 4

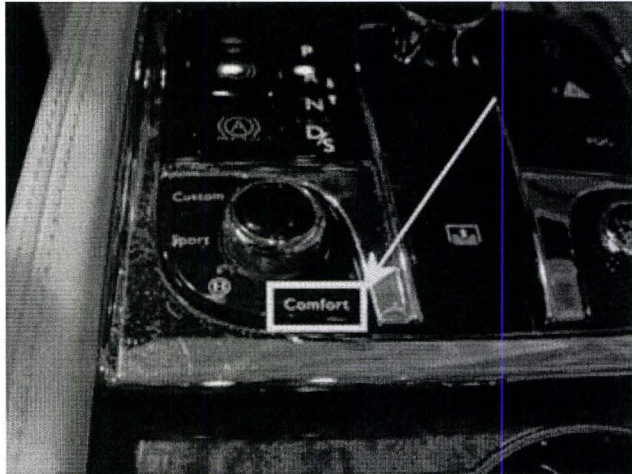


Figure 3

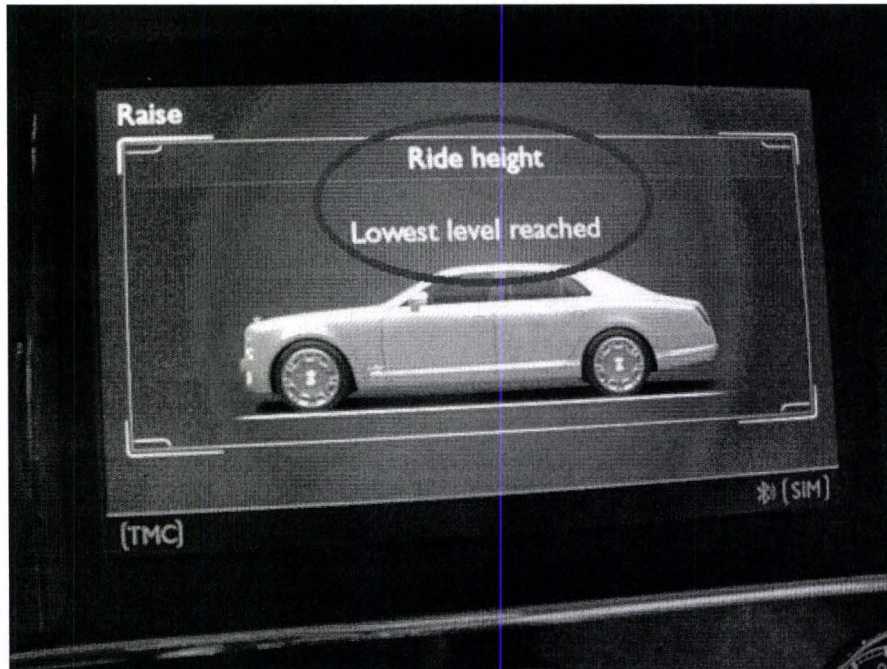


Figure 4

3. From the Desktop select the Diagstarter icon (Figure 5 Point A), ensure the Offboard Diagnostic Information System Service is completely shut down.

- Select VAS PC (Figure 5 Point B)

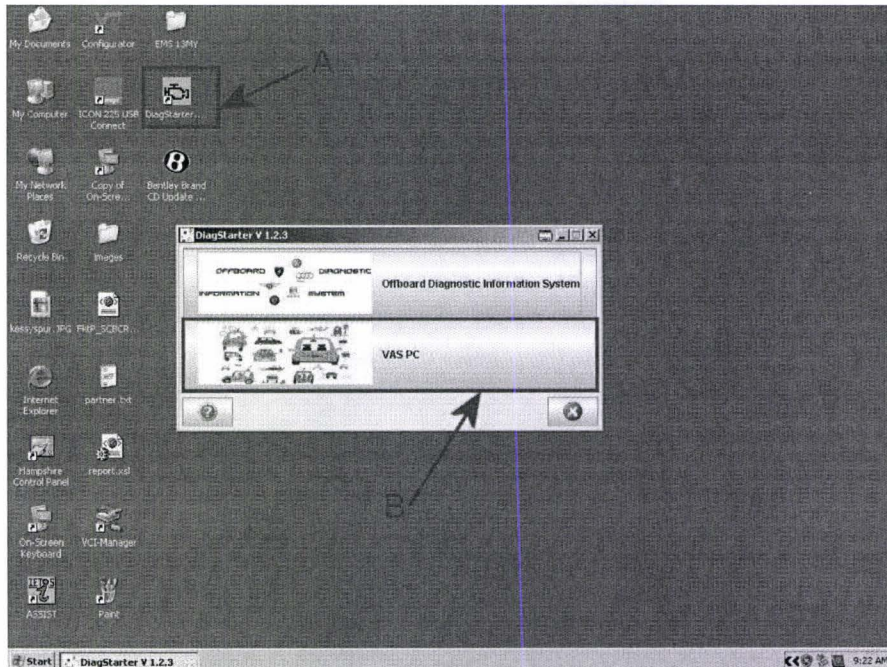


Figure 5

- From the VAS homepage follow the instructions below:

4. Select Guided Fault Finding

5. Select Bentley

6. Select Mulsanne 2011

7. Select appropriate year

- The vehicle system test will now start - Wait for the vehicle system test to complete.

8. Once the vehicle system test is complete - Go forward to Software Version Management (SVM) Target/Actual Comparison screen

- When prompted to run a Target Actual Comparison, select **NO**

- At the bottom of the next screen select **Go To**

- Select Function/component selection

- Select Software Version Management (SVM)

- Select Problem related hardware/software update and follow the relevant on screen prompts

9. When prompted enter the following code: 3Y034A0001P and follow the instructions on screen until **program end**

10. The Adaptive suspension basic settings now require updating please follow the remaining instructions

- Select Guided functions – 34 Adaptive suspension control unit – J197

- Select 34 – Basic settings (Rep.Gr.43)

NOTE: When Conducting Basic settings please select *Comfort mode* using the Drive dynamic switch not *Bentley Mode* as shown in Figure 6

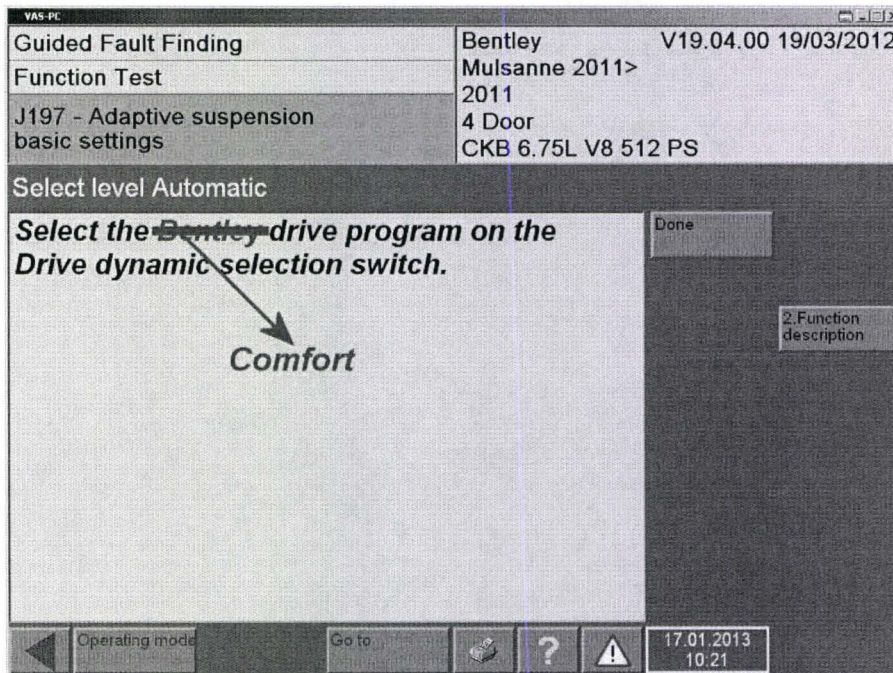


Figure 6

- Should code C110300 Sensor for automatic distance control, misadjusted be evident please run - 13 Basic settings for the ACC and clear any related ACC fault codes

IMPORTANT: Once this procedure has been carried out, please also refer to the attached "Diagnostic Communication 12 – 2011" document which details the procedure that must be carried out to clear any other ACC and ABS faults

Warranty accounting instructions

Warranty Type	910 or 110
Labour operation code	01 29 00 05
Damage Service Number	43 19
Damage code	00 40
Time	50 Time units