



# Service Bulletin

## INFORMATION

**Subject:** Service Engine Soon Light On

**Models:** 2010-2012 Buick LaCrosse  
2011-2012 Buick Regal

*This PI was superseded to update the Concern and Recommendation sections. Please discard PIC5327D.*

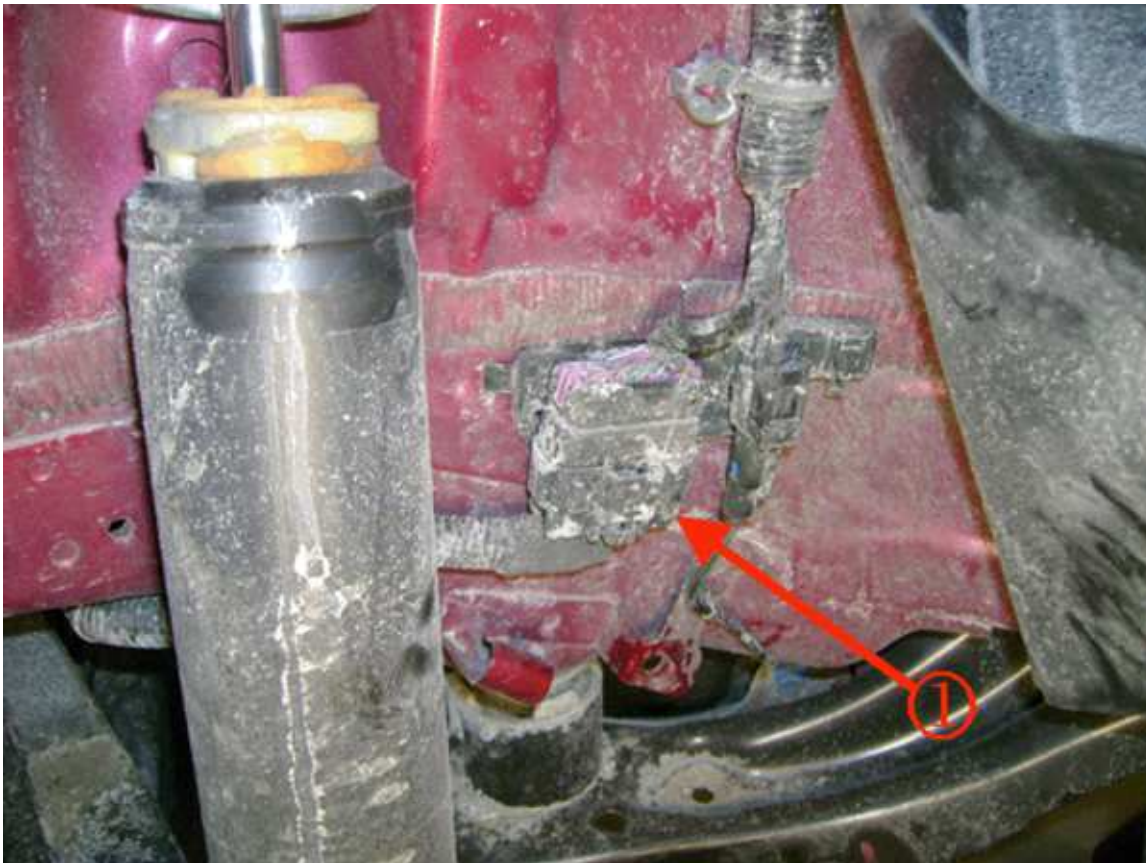
The following diagnosis might be helpful if the vehicle exhibits the symptom(s) described in this PI.

### Condition/Concern

A Customer may comment about the Service Engine Soon light on intermittently or the vehicle might have stalled while driving. Further investigation may reveal possible corrosion and/or water / dirt intrusion at Connector X403 (LaCrosse) or X350(Regal).

### Recommendation/Instructions

Remove the appropriate rear wheel well liner and inspect for water/dirt intrusion or corrosion at the connector. If any issues are found replace both the male and female connectors and pack the connector with specified Dielectric Grease.



## Parts Information

Part Number	Description	QTY
12377900 – US	Dielectric Grease	1
10953529 – CA	Dielectric Grease	1
19181245	Male Connector	1
15306348	Female Connector	1

## Warranty Information

For wiring repairs covered under warranty, please refer to latest version of bulletin 10-00-89-005 for warranty information on wire/connector repairs.

Please follow this diagnostic or repair process thoroughly and complete each step. If the condition exhibited is resolved without completing every step, the remaining steps do not need to be performed.

### Additional SI Keywords

P0087 P0089 P00C6 P018B P018C P018D P0231 P0232 P023F P025A P0442 P0446 P0449 P0450 P0451 P0452 P0453 P0454 P0455 P0461 P0462 P0463 P0464 P0498 P0499 P0641 P0642 P0643 P064A P069E P1255 P2066 P2067 P2068 P2635 U0109

---

GM bulletins are intended for use by professional technicians, NOT a "do-it-yourselfer". They are written to inform these technicians of conditions that may occur on some vehicles, or to provide information that could assist in the proper service of a vehicle. Properly trained technicians have the equipment, tools, safety instructions, and know-how to do a job properly and safely. If a condition is described, DO NOT assume that the bulletin applies to your vehicle, or that your vehicle will have that condition. See your GM dealer for information on whether your vehicle may benefit from the information.



WE SUPPORT VOLUNTARY TECHNICIAN CERTIFICATION