



MERCEDES-BENZ USA, LLC
 303 Perimeter Center North, Suite 202
 Atlanta, GA, 30346
 Phone: (770) 705-0600
 Fax: (770) 705-0117
 MBUSA.com



newschannel update

TO: : Mercedes-Benz Dealer Principals, General Managers, Sales Managers, Service Managers, Parts Managers	FROM: Thomas Brunner, Department Manager, Vehicle Compliance and Analysis, Engineering Services
RE: Recall Campaign 2015120002 Model 222, Model Year 2015 Replace Battery Charger for High-Voltage Battery	DATE: January 22, 2016

IMPORTANT RECALL INFORMATION

This Recall Campaign is being launched today and the 49 affected vehicles will be flagged in VMI.

Parts: Dealers may order parts as required. Replacement rate is 100%.

Owner Notification: Owner notifications will be mailed January 27, 2016.

What Should Customers Do: Customers may continue to drive their vehicles until the recall is completed.

What's the Issue: This Recall campaign has been initiated because Daimler AG (DAG), the manufacturer of Mercedes-Benz vehicles, has determined that on certain Model Year 2015 S-Class plug-in hybrid vehicles, the circuit board in the high voltage on-board charger might not have been manufactured according to specifications. In the event of a circuit board malfunction, the charging function for an external charging cable might not be available. Additionally, the high voltage on-board charger might incorrectly detect a charging cable, even while the car is being driven. If the vehicle incorrectly detects a charging cable, the transmission attempts to shift to "Park". Should this occur when the vehicle is in motion at speeds below 3 mph, the transmission would engage the parking lock function. This would abruptly stop the vehicle and could increase the risk of a crash.

Given this notice, it is a violation of Federal law for a dealer to sell or lease any **new Model Year 2015 S-Class Plug-in Hybrid** covered by this notification in dealer inventory until the vehicle has been repaired.

Dealers are advised to check **new** vehicle inventory for recall campaign applicability via VMI, and repair immediately. Once the repair is complete, the vehicle may be sold or leased.

What We're Doing: MBUSA has initiated a voluntary recall of all potentially affected vehicles described above. The recall will be conducted to remedy the issue described and an authorized Mercedes-Benz dealer will replace the battery charger on the affected vehicles. The recall bulletin will be posted on STAR TekInfo.

When scheduling customers for an appointment please ensure that you are aware of any open campaigns in VMI so that the customer is advised about the time necessary to complete all campaigns.

Note: VMI must always be checked before performing campaigns to verify that the campaign is required on a specific vehicle.

Dealers may also identify vehicles subject to a campaign through NetStar by selecting "Campaign" under the Controlling tab. Only vehicles that have been retailed by the respective dealer will be displayed within this program.

While we regret any inconvenience this may cause, MBUSA is determined to maintain a high level of vehicle quality and customer satisfaction

Please refer all customer inquiries to the Customer Assistance Center at 1-800-FOR-MERcedes (1-800-367-6372).



Mercedes-Benz - are registered trademarks of Daimler, Stuttgart, Germany



Mercedes-Benz

Campaign No. 2015120002, January 2016

TO: ALL MERCEDES-BENZ CENTERS

SUBJECT: **Model 222, Model Year 2015**
Replace Battery Charger for High-Voltage Battery

This Recall campaign has been initiated because Daimler AG (DAG), the manufacturer of Mercedes-Benz vehicles, has determined that on certain Model Year 2015 S-Class plug-in hybrid vehicles, the circuit board in the high voltage on-board charger might not have been manufactured according to specifications. In the event of a circuit board malfunction, the charging function for an external charging cable might not be available. Additionally, the high voltage on-board charger might incorrectly detect a charging cable, even while the car is being driven. If the vehicle incorrectly detects a charging cable, the transmission attempts to shift to "Park". Should this occur when the vehicle is in motion at speeds below 3 mph, the transmission would engage the parking lock function. This would abruptly stop the vehicle and could increase the risk of a crash.

Prior to performing this Recall Campaign:

- Please check VMI to determine if the vehicle is involved in the Campaign and if it has been previously repaired.
- Please review the entire Recall Campaign bulletin and follow the repair procedure exactly as described.

Please note that Recall Campaigns **do not expire** and may also be performed on a vehicle with a vehicle status indicator.

Approximately 49 vehicles are involved.

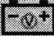
Order No. P-RC-2015120002

This bulletin has been created and maintained in accordance with MBUSA-SLP S423QH001, Document and Data Control, and MBUSA-SLP S424HH001, Control of Quality Records.

Procedure



Note:

- Use DAS/Xentry BD 12/2015-01-02/2016 with all associated patches or higher.
- Follow the steps exactly as described in DAS/Xentry.
- Connect battery charger (battery voltage  >12.5V).
- Ensure all electrical consumers are switched-off.
- In the event of software/SCN update issues, contact Star Diagnosis User Help Desk. Please refer to the "pre-call" check list before contacting UHD
- Refer to Star Diagnosis System (SDS) Best Practices Guide.



1. Replace battery for high voltage battery; refer to WIS: AR54.10-P-5106LFH.



Notes (regarding above WIS instructions)

- Be sure to follow-on screen instructions in SDS when powering-down the high voltage system.
- When draining coolant from the battery charger supply pressure to low temperature coolant reservoir (A, Figure 1) using a pressure pump (arrow).
- **Contrary to WIS instructions do not replace locking nut (arrow, Figure 2) as it is attached to circuit 30 cable (1, Figure 2). Be sure to torque nut (arrow, Figure 2) to proper specification.**
- Save and reuse coolant previously drained from system.
- Remove 12V battery to allow clearance for removal of battery charger and DC/DC converter assembly; refer to WIS: AR54.10-P-0005LF.

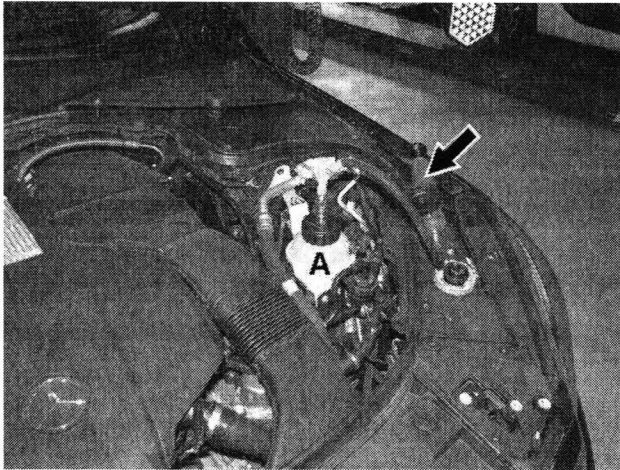


Figure 1



Figure 2



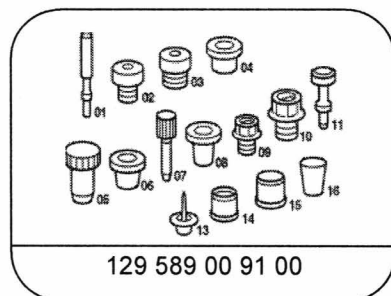
WARNING!

Be sure to follow all safety procedures described in the above WIS instructions.

i **Note** (regarding WIS documents referenced in this Procedure):

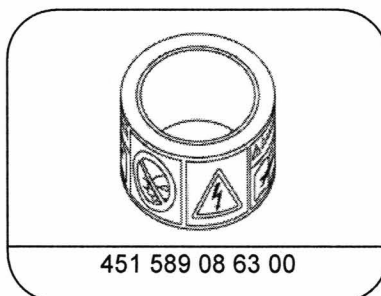
Replacement of parts not listed in the parts table of this Procedure are not claimable under this campaign. If replacement of additional part(s) is necessary, check coverage prior to submitting under warranty.

S **Special Tools**



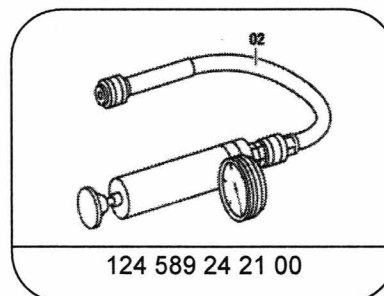
129 589 00 91 00

Record plug



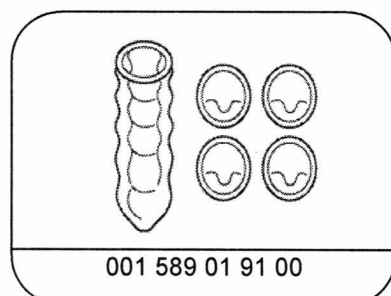
451 589 08 63 00

Warning label



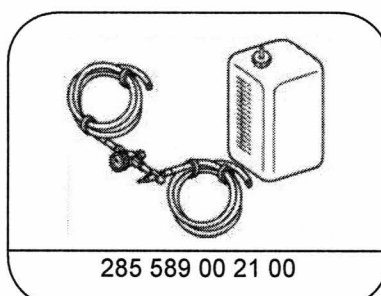
124 589 24 21 00

Pressure pump



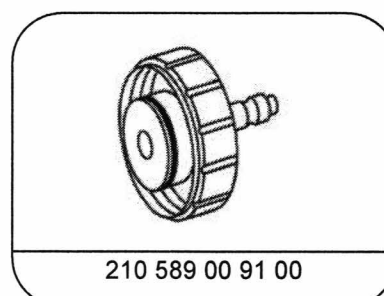
001 589 01 91 00

Set of protective covers



285 589 00 21 00

Cooler vacuum filling device



210 589 00 91 00

Test cap

Primary Parts Information

Qty.	Part Name	Part Number	Estimated Replacement Rate
1	Battery charger	A 000 900 43 07	100%

**Note:**

- Please be aware that only the part number(s) referenced in the Campaign Bulletin is/are approved for use to repair the vehicle. Repairs performed using any other part(s) will not have been performed in accordance with the campaign. Accordingly, warranty claims submitted with reference to an improper part number(s) will be denied.
- The following allowable labor operation should be used when submitting a warranty claim for this repair:

Warranty Information

Operation: Replace battery charger for high-voltage battery (02-9464).

Damage Code	Operation Number	Labor Time (hrs.)
54 902 47 7	02-9464	2.2

**Note**

Operation Number labor times are subject to change.