



NUMBER: 23-045-16

GROUP: Body

DATE: September 27, 2016

This bulletin is supplied as technical information only and is not an authorization for repair. No part of this publication may be reproduced, stored in a retrieval system, or transmitted, in any form or by any means, electronic, mechanical, photocopying, or otherwise, without written permission of FCA US LLC.

SUBJECT:

Water In Either Left Or Right Front Floor Footwells

OVERVIEW:

This bulletin involves correcting a sealant void between the cowl plenum lower panel and dash crossmember.

MODELS:

2015 - 2016 (UF) Chrysler 200

**NOTE: This bulletin applies to vehicles within the following markets/countries:
NAFTA and APAC.**

NOTE: This bulletin applies to UF vehicles built on or before July 05, 2016 (MDH 0705XX).

SYMPTOM/CONDITION:

The customer may describe damp or wet carpet in either the left/right side or both front footwells. This condition may be due to a sealant void between the cowl plenum lower panel and dash crossmember or the seam behind the wheel well liner allowing water to enter the vehicle interior.

NOTE: All three areas must be checked and repaired.

DIAGNOSIS:

1. Open the hood.
2. Using a flash-light locate the horizontal weld behind hood's hinge (between the hinge and the fender as shown in (Fig. 1)).



Fig. 1 Inspection of Beam

3. Remove the wheel house splash shield. Refer to the detailed service procedures available in DealerCONNECT> TechCONNECT under: Service Info>23 - Body/Exterior/Shield, Splash, Front Wheelhouse/Removal.
4. Remove the cowl cover panel. Refer to the detailed service procedures available in DealerCONNECT> TechCONNECT under: Service Info>23 - Body / Exterior / Cover, Cowl Panel/Removal.
5. Pressurize the cabin by rolling all the windows up turning the ignition on engine off and the blower on high with the recirculation button off and shut the doors.
6. Use soapy water spray the affected areas, check for bubbles showing air leaking out from the cabin compartment.
7. Proceed to the repair procedure.

If the customer describes the symptom, perform the Repair Procedure.

PARTS REQUIRED:

Qty.	Part No.	Description
1 (AR)	NPN	Lord Fusor 112B Structural Adhesive Or Equivalent

NOTE: Each Lord Fusor 112B structural adhesive tube will service approximately 3 vehicles.

REPAIR PROCEDURE:

1. Does the horizontal seam have a hole at the weld (Fig. 2)?
 - a. YES>>> Proceed to [Step #2](#).
 - b. NO>>> Proper Sealant is applied and no further action needed at this location (Fig. 3). Proceed to [Step #4](#).



Fig. 2 Insufficient Weld

1 - Hole At The Weld (BAD)

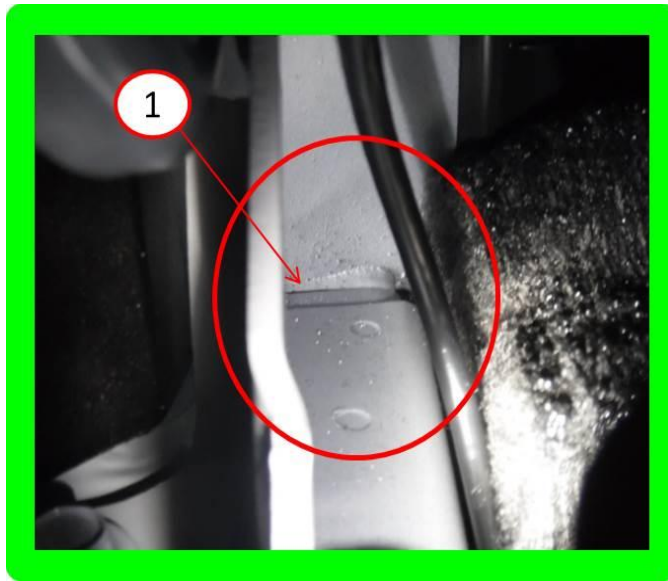


Fig. 3 Proper Amount Of Weld

1 - Proper Amount Of Weld (GOOD)

2. Apply the sealant to the affected area (Fig. 4).
3. Allow the sealant/sealer to dry per the manufacturer's directions.



Fig. 4 Structural Adhesive At Weld Location

4. Inspect the wheel house opening ([Fig. 5](#)).

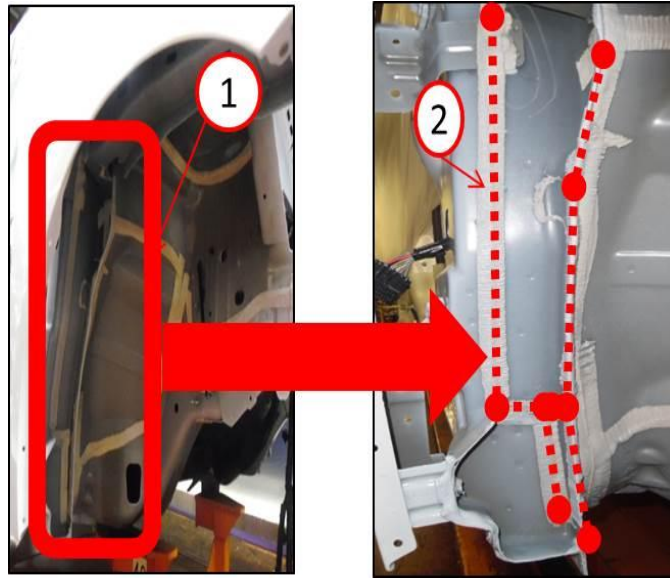


Fig. 5 Wheel House Sealant Location

- 1 - Current Sealant On Vehicle
- 2 - New Sealant To Be Applied To Exposed Locations Within The Dotted Lines

-
5. Is there air/bubbles leaking from the seam area behind the inner fender well ([Fig. 6](#))?
 - a. YES>>> Proceed to [Step #6](#).
 - b. NO>>> Proper Sealant is applied and no further action needed at this location ([Fig. 5](#)). Proceed to [Step #8](#).

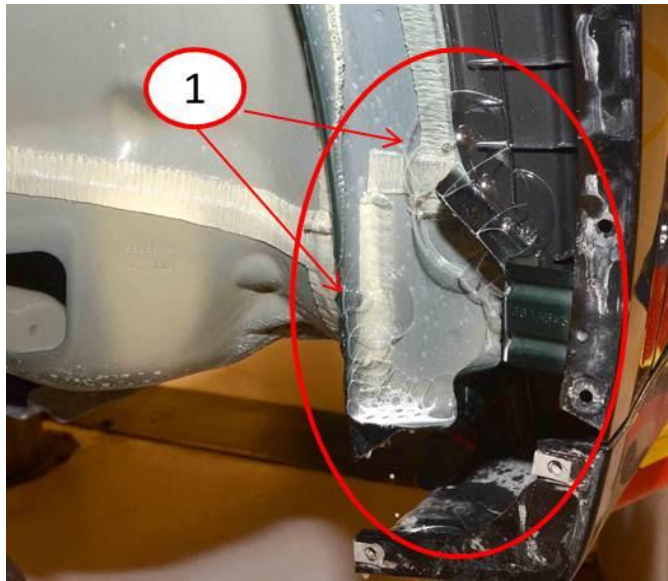


Fig. 6 Air Bubbles Behind Inner Fender Well Location

1 - Air Bubbles AT Wheel House

-
6. Apply the sealant at the locations with the dotted lines to the affected area (Fig. 5).
 7. Allow the sealant/sealer to dry per the manufacturer's directions.

8. Locate seam of plenum to cowl side (Fig. 7).

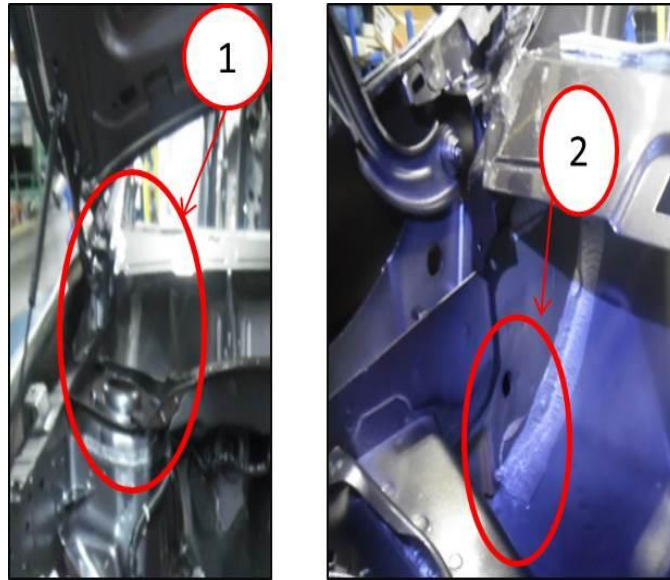


Fig. 7 Plenum Sealant

- 1 - Location Behind Strut Tower
- 2 - Location Of Sealant To Be Applied

-
9. Is there air/bubbles leaking from the plenum to cowl side (Fig. 8) or is there a seam showing that does not have sealant over it (Fig. 9)?
 - a. YES>>> Proceed to [Step #11](#).
 - b. NO>>> Proper Sealant is applied and no further action needed at this location (Fig. 10). Proceed to [Step #13](#).

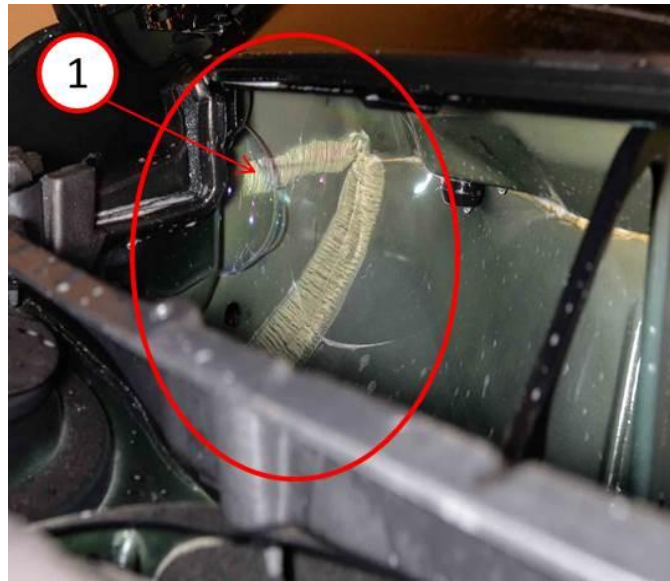


Fig. 8 Air Bubbles At Cowl

1 - Air Bubbles At Cowl



Fig. 9 Seam Not Sealed Correctly

1 - Exposed Seam

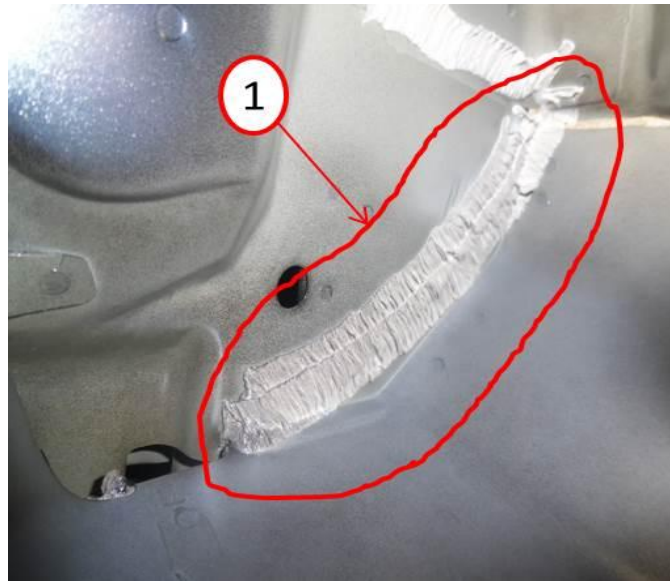


Fig. 10 Seam Sealed Correctly

1 - Seam Sealed Properly

-
10. (If needed for sealant repair). On the drivers side remove the wiper motor and arm assembly. Refer to the detailed service procedures available in DealerCONNECT> TechCONNECT under: Service Info> 08 - Electrical / 8R - Wipers/Washers / Linkage, Wiper Arm/Removal.
 11. Apply the sealant to the affected area as shown in (Fig. 7).
 12. After the sealant has been allowed to fully dry per manufacture's specs.
 13. Spray soapy water in the areas of repair, inspect for any trace of air/bubbles coming from the repaired areas. If no air or bubbles are found, then the sealant process is complete.

14. Install the wheel house splash shield. Refer to the detailed service procedures available in DealerCONNECT> TechCONNECT under: Service Info> 23 - Body/Exterior/Shield, Splash, Front Wheelhouse/Installation.
15. (If removed). Install the wiper motor and arm assembly. Refer to the detailed service procedures available in DealerCONNECT> TechCONNECT under: Service Info> 08 - Electrical / 8R - Wipers/Washers / Linkage, Wiper Arm/Install.
16. Install the cowl cover panel. Refer to the detailed service procedures available in DealerCONNECT> TechCONNECT under: Service Info>23 - Body / Exterior / Cover, Cowl Panel/Installation.

POLICY:

Reimbursable within the provisions of the warranty.

TIME ALLOWANCE:

Labor Operation No:	Description	Skill Category	Amount
23-50-01-9L	Inspect for Water Leaks near Plenum/Cowl Area (2 - Skilled)	6 - Electrical and Body Systems	1.1 Hrs.
23-50-01-9M	Inspect for Water Leaks and Reseal One Side (2 - Skilled)	6 - Electrical and Body Systems	1.3 Hrs.
23-50-01-9N	Inspect for Water Leaks and Reseal Both Sides (2 - Skilled)	6 - Electrical and Body Systems	1.5 Hrs.

FAILURE CODE:

ZZ	Service Action
----	----------------

PART REIMBURSEMENT DETAIL:

Part No:	Description
NPN	Lord Fusor 112B Structural Adhesive Or Equivalent

NOTE: This part number is for reimbursement only and will need to be claimed for the value of the Structural Adhesive or it will be rejected. If this is a non-MOPAR part or product, a copy of the invoice showing the purchase of the non-MOPAR part or product needs to be attached to the reimbursement claim.