



NUMBER: 23-022-16 REV. A

GROUP: Body

DATE: September 24, 2016

This bulletin is supplied as technical information only and is not an authorization for repair. No part of this publication may be reproduced, stored in a retrieval system, or transmitted, in any form or by any means, electronic, mechanical, photocopying, or otherwise, without written permission of FCA US LLC.

THIS BULLETIN SUPERSEDES SERVICE BULLETIN 23-022-16, DATED AUGUST 10, 2016, WHICH SHOULD BE REMOVED FROM YOUR FILES. ALL REVISIONS ARE HIGHLIGHTED WITH **ASTERISKS**** AND INCLUDE A REPAIR PROCEDURE STEP 31 TEXT CHANGE AND PART DESCRIPTION CHANGE.**

SUBJECT:

Creaks, Rattles, Squeaks Or Seal Gaps From My Sky Roof Panels

OVERVIEW:

This bulletin involves performing various repair procedures to the My Sky roof panels.

MODELS:

2015 - 2016 (BU) Jeep Renegade

NOTE: This bulletin applies to vehicles within the following markets/countries: NAFTA, LATAM, EMEA and APAC.

NOTE: This bulletin applies to vehicles built on or before December 22, 2015 (MDH 1222XX) equipped with My Sky Manual Roof Panels (Sales Code GWB) or My Sky Power Roof Panels (Sales Code GWN).

SYMPTOM/CONDITION:

Some customers may describe various noises coming from the My Sky roof panels, handle, or latch, as well as seal gaps between the panels.

DIAGNOSIS:

If the customer describes the symptom/condition listed above, perform the Repair Procedure.

PARTS REQUIRED:

Qty.	Part No.	Description
2	68324708AA	Bracket
1	68324707AA	Pad Stop
1	68324502AA	Spacer

Qty.	Part No.	Description
1	68324500AA	Lever **(Yellow)**
1 (AR)	05019060AA	Grease NYE 880 Gel
1 (AR)	04773427	Mopar Weather Strip Lubricant

NOTE: Each tube of NYE grease will service one vehicle.

NOTE: Mopar Weather Strip Lubricant is considered a shop supply, not on Claim.

SPECIAL TOOLS/EQUIPMENT REQUIRED:

NPN	80 and 100 Grit Sandpaper
-----	---------------------------

NOTE: Sandpaper is considered a shop supply, not On Claim.

NOTE: This bulletin contains eight different repair procedures. It is recommended technicians read through and understand this bulletin before starting the repairs.

REPAIR PROCEDURES:

CAUTION: Failure to follow the steps below to remove the My Sky roof panels may result in damage to the roof panels:

- A. Remove the front roof panel by inserting the My Sky key into the latch key hole.
- B. Rotate and keep the key turned to the symbol to release the lock and pull the panel handle down and away from the stowed position, unlocking the roof panel.
- C. Remove the key from the latch key hole.
- D. Remove the roof panel from the outside of the vehicle and place on suitable clean table.

REPAIR PROCEDURE A: For vehicles built up to and including June 30, 2015 (MDH 0630XX) equipped with My Sky Power Roof Panels (Sales Code GWN) - Start repairs at step 1 and complete all repairs for power roof panels.

REPAIR PROCEDURE B: For vehicles built up to and including June 30, 2015 (MDH 0630XX) equipped with My Sky Manual Roof Panels (Sales Code GWB) - Start repairs at step 17 and complete all repairs for manual roof panels.

REPAIR PROCEDURE C: For vehicles built between July 01, 2015 (MDH 0701XX) and September 18, 2015 (MDH 0918XX) equipped with either My Sky Manual Roof Panels (Sales Code GWB) or My Sky Power Roof Panels (Sales Code GWN) - Start repairs at step 25 and complete all repairs to the end of this bulletin.

REPAIR PROCEDURE D: For vehicles built between September 19, 2015 (MDH 0919XX) and September 23, 2015 (MDH 0923XX) equipped with My Sky Power Roof Panels (Sales Code GWN) or My Sky Manual Roof Panels (Sales Code GWB) - Start repairs at step 36 and complete all repairs to the end of this bulletin.

REPAIR PROCEDURE E: For vehicles built between September 24, 2015 (MDH 0924XX) and September 28, 2015 (MDH 0928XX) equipped with My Sky Power Roof Panels (Sales Code GWN) or My Sky Manual Roof Panels (Sales Code GWB) - Start repairs at step 43 and complete all repairs to the end of this bulletin.

REPAIR PROCEDURE F: For vehicles built between September 29, 2015 (MDH 0929XX) and November 16, 2015 (MDH 1116XX) equipped with My Sky Power Roof Panels (Sales Code GWN) - Start repairs at step 50 and complete all repairs to the end of this bulletin.

REPAIR PROCEDURE G: For vehicles built between September 29, 2015 (MDH 0929XX) and December 09, 2015 (MDH 1209XX) equipped with My Sky Power Roof Panels (Sales Code GWN) or My Sky Manual Roof Panels (Sales Code GWB) - Start repairs at step 58 and complete all repairs to the end of this bulletin.

REPAIR PROCEDURE H: For vehicles built between December 09, 2015 (MDH 1209XX) and December 21, 2015 (MDH 1221XX) equipped with My Sky Power Roof Panels (Sales Code GWN) or My Sky Manual Roof Panels (Sales Code GWB) - Start repairs at step 62 and complete repair to the end of this bulletin.

CAUTION: Failure to mask bracket position may result in bracket not aligning properly and roof panel not fully latching or sealing.

REPAIR PROCEDURE A: Steps 1 through 7 apply to My Sky POWER Roof Panels (Sales Code GWN) only.

NOTE: Left side bracket shown, right side bracket similar.

1. Replace both roof panel brackets. Remove the front roof panel from the vehicle. Set the panel on bench using a clean, soft cloth to protect the outer surface.
2. Using masking or equivalent tape, mask around the current bracket position (Fig. 1).
3. Remove and discard three Torx screws from the bracket (Fig. 1).
4. Remove and discard the bracket from the roof panel (Fig. 1).
5. Install new bracket (P/N 68324708AA) on the roof panel with three new Torx screws (Fig. 1). Tighten Torx screws to 3.5 N·m (30 in. lbs.).
6. Remove and discard tape (Fig. 1).

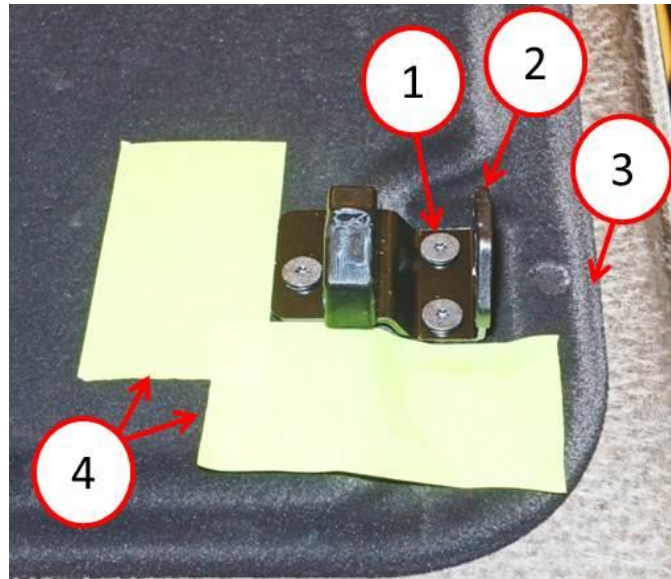


Fig. 1 Bracket Taped

- 1 - Torx Screw
- 2 - Bracket - #68324708AA
- 3 - Roof Panel
- 4 - Tape

-
7. Install the front roof panel on the vehicle.

8. Apply weather strip lubricant. Place the ignition in the ON position and completely open the roof panel by pushing the switch. Place the ignition in the OFF position.
9. Using a clean cloth, wipe off primary seal to clean the surface (Fig. 2).
10. Using a brush or equivalent, apply weather strip lubricant (P/N 04773427) evenly across the entire primary seal surface (Fig. 2).

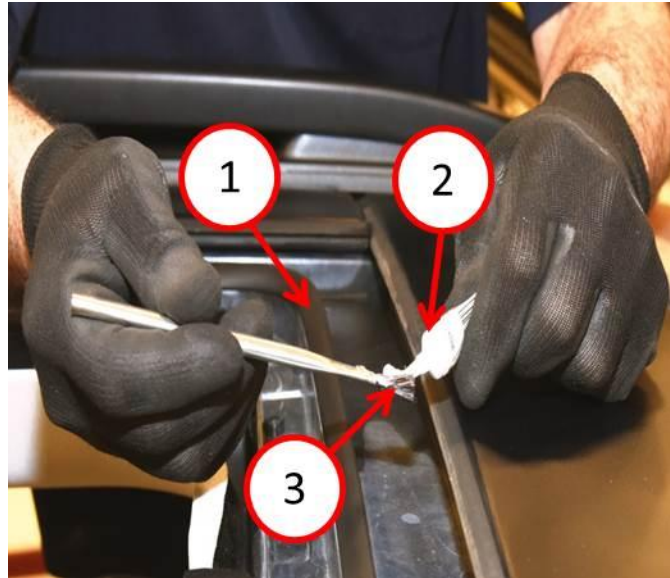


Fig. 2 Weather Strip Lubricant

- 1 - Primary Seal
- 2 - Lubricant
- 3 - Brush

-
11. Place the ignition in the ON position and close the roof panel by pushing the switch. Place the ignition in the OFF position.
 12. Unlatch and remove the rear roof panel.
 13. Place the ignition in the ON position and open the roof panel to the vent position by pushing the switch. Place the ignition in the OFF position.

14. With the front roof panel in the vent position, clean and lubricate the remaining portion of the primary seal not accessible when the front panel was in the completely open position (Fig. 3).

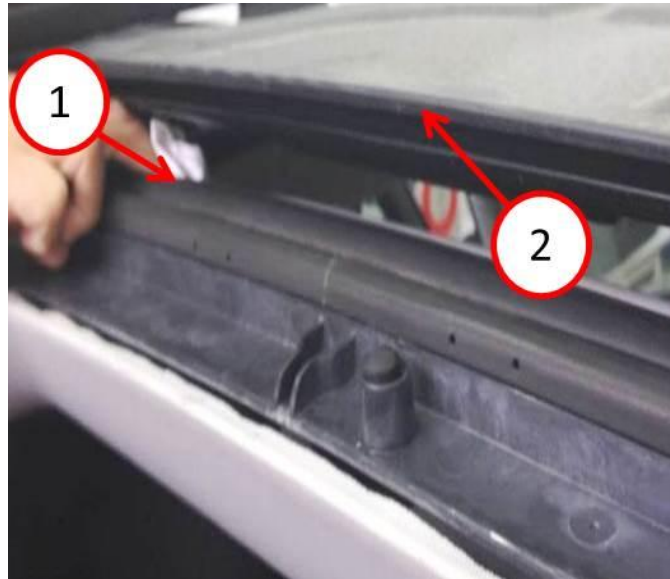


Fig. 3 Rear Portion Of Primary Seal

- 1 - Primary Seal
2 - Roof Panel

-
15. Place the ignition in the ON position and close the roof panel by pushing the switch.
Place the ignition in the OFF position.
16. Install the rear roof panel on vehicle.

REPAIR PROCEDURE B: Steps 17 through 24 apply to My Sky MANUAL Roof Panels (Sales Code GWB) only.

17. Apply weather strip lubricant. Remove the front panel from the vehicle. Set the panel on bench using a clean, soft cloth to protect the outer surface.

NOTE: Right side Torx screws shown; left side screws similar. Both sets of Torx screws must be removed.

18. Remove two Torx screws from the roof panel frame (Fig. 4).



Fig. 4 Right Side Screws

1 - Torx Screws

2 - Roof Panel Frame

19. Manually slide the roof panel frame rearward to access the primary seal (Fig. 5).

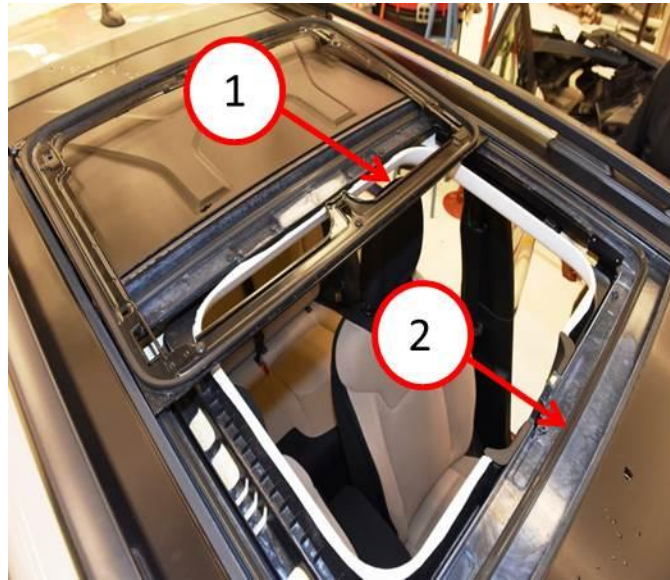


Fig. 5 Frame And Primary Seal

1 - Roof Panel Frame

2 - Primary Seal

20. Using a clean cloth, wipe off the primary seal to clean the surface (Fig. 6).
21. Using a brush or equivalent, apply weather strip lubricant (P/N 04773427) evenly across the entire primary seal surface (Fig. 6).

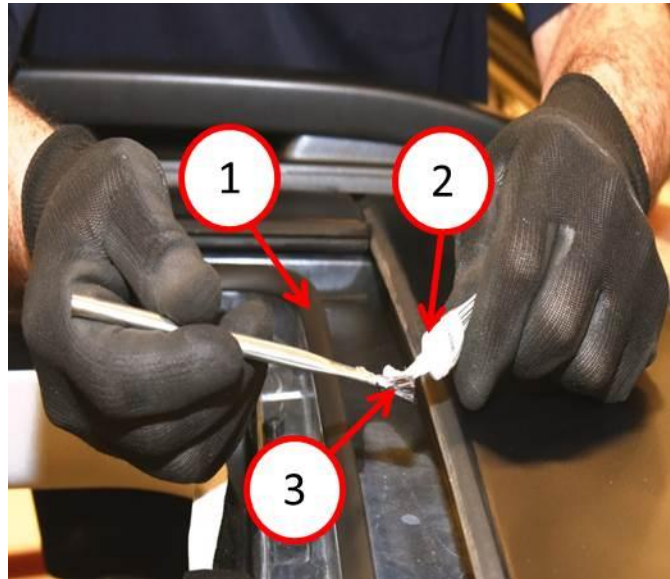


Fig. 6 Weather Strip Lubricant

- 1 - Primary Seal
- 2 - Lubricant
- 3 - Brush

-
22. Manually slide the roof panel frame forward and seat onto the primary seal.
 23. Install two Torx screws on roof panel frame. Tighten Torx screws securely.
 24. Install the front panel on the vehicle.

REPAIR PROCEDURE C: Steps 25 through 35 apply to both My Sky MANUAL Roof Panels (Sales Code GWB) and My Sky POWER Roof Panels (Sales Code GWN).

NOTE: Do not remove the roof panel for this repair. There is an encapsulated nut holding the handle in place and if the roof panel is placed upside down, the handle Torx screw will not fasten to the nut. Repair must be done in vehicle.

25. Replace handle. Using the My Sky key, open and unlatch the front roof panel handle.
26. Using suitable tool, remove handle cover by evenly pulling cover downward from the handle base.
27. Verify that all handle cover clips are fastened to cover. If clips are still fastened to handle base, remove the clips and install back on handle cover (Fig. 7).



Fig. 7 Cover Handle Clip

28. Place the handle in the open position and disengage the spring arm from the yellow lever (Fig. 8).
29. Remove the Torx screw from the yellow lever (Fig. 8).
30. Remove and discard the yellow lever from the handle base (Fig. 8).
31. Install new ****yellow**** lever (P/N 68324500AA) on handle base with Torx screw (Fig. 8). Tighten Torx screw to 3.5 N·m (30 in. lbs.).
32. Install spring arm on the lever (Fig. 8).
33. Partially close the roof panel handle (Fig. 8).
34. Install the handle cover to handle base (Fig. 8).
35. Close the roof panel handle (Fig. 8).



Fig. 8 Spring And Lever Assembly

- 1 - Handle
 - 2 - Handle Base
 - 3 - Lever - #68324500AA
 - 4 - Torx Screw
 - 5 - Spring Arm
-

REPAIR PROCEDURE D: Steps 36 through 42 apply to both My Sky MANUAL Roof Panels (Sales Code GWB) and My Sky POWER Roof Panels (Sales Code GWN).

36. Re-torque Torx screw. Using the My Sky key, open and unlatch the rear roof panel handle.
37. Using suitable tool, remove handle cover by evenly pulling cover downward from the handle base.
38. Verify that all handle cover clips are fastened to the cover. If clips are still fastened to the handle base, remove the clips and install back on handle cover (Fig. 9).



Fig. 9 Cover Handle Clip With New Lever

39. Remove the roof panel from the vehicle. Set the panel on bench using a clean, soft cloth to protect the outer surface.

40. While holding open the lever, check Torx screw for a noticeable gap between screw and latch base (Fig. 10).



Fig. 10 Lever Opened Exposing Torx Screw

- 1 - Lever
- 2 - Torx Screw
- 3 - Latch Base

-
41. Is there a gap between the screw and the latch base?
- a. YES >>> Tighten the Torx screw to 2 N·m (17 in. lbs.) and verify the lever moves freely without binding. Proceed to [Step #42](#).
 - b. NO >>> Install the handle cover and roof panel on vehicle.
42. Install handle cover and roof panel on vehicle.

REPAIR PROCEDURE E: Steps 43 through 49 apply to both My Sky MANUAL Roof Panels (Sales Code GWB) and My Sky POWER Roof Panels (Sales Code GWN).

43. Grease spring. Using the My Sky key, open and unlatch the front roof panel handle.
44. Using suitable tool, remove the handle cover by evenly pulling cover downward from the handle base.
45. Verify that all the handle cover clips are fastened to the cover. If clips are still fastened to handle base, remove the clips and install back on the handle cover ([Fig. 11](#)).



Fig. 11 Cover Handle Clip

46. Remove the roof panel from the vehicle. Set the panel on bench using a clean, soft cloth to protect the outer surface.

47. Using a suitable brush and NYE grease (P/N 05019060AA), brush grease into all the spring coils on the lever spring (Fig. 12).

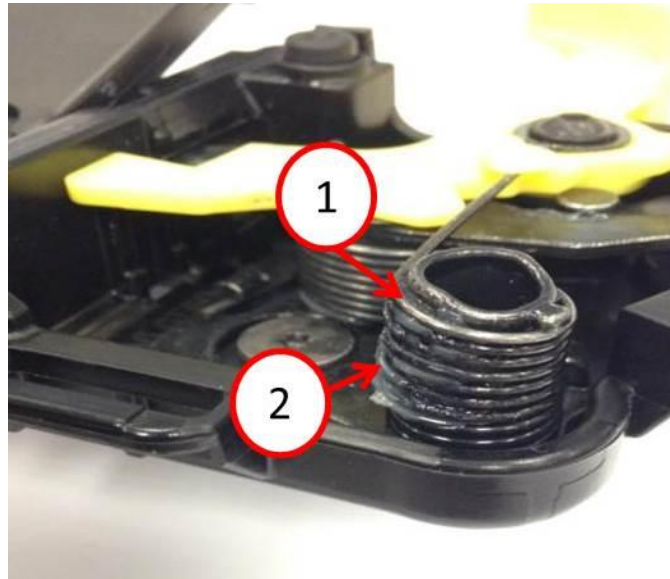


Fig. 12 Lever Spring Greased

- 1 - Spring
- 2 - Coils Greased

48. Install the handle cover on the handle base.
49. Install the roof panel on the vehicle.

REPAIR PROCEDURE F: Steps 50 through 57 apply to My Sky POWER Roof Panels (Sales Code GWN) only.

50. Replace pad stops. Open the front roof panel and slide the panel rearward halfway open.
51. Remove the roof panel from the vehicle. Set the panel on bench using a clean, soft cloth to protect the outer surface.

NOTE: Right side shown, left side similar.

52. Remove the Torx screw from the pad stop (Fig. 13).
53. Remove and discard the pad stop from roof panel frame (Fig. 13).
54. Install new pad stop (P/N 68324707AA) on roof the panel frame (Fig. 13).
55. Install the Torx screw on wind deflector slider (Fig. 13). Tighten Torx screw to 1 N·m (8.8 in. lbs.).

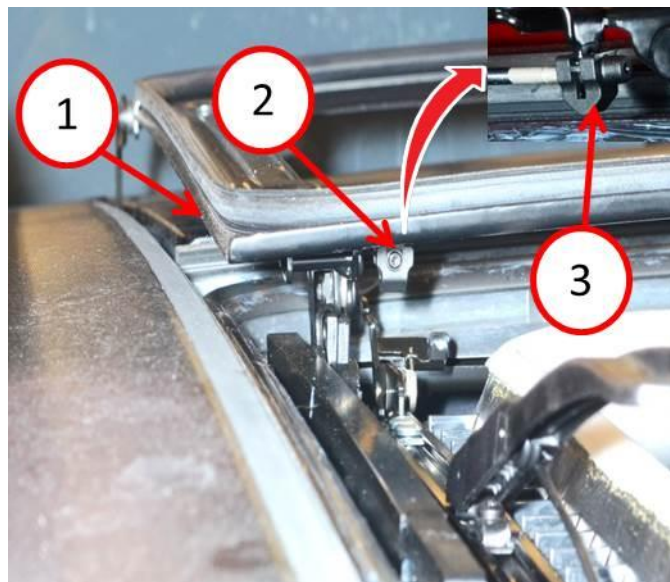


Fig. 13 Deflector Screw And Pad Stop

- 1 - Roof Panel Frame
- 2 - Screw
- 3 - Pad Stop - #68324707AA

-
56. Install the roof panel on the vehicle.
 57. Slide the roof panel closed and lock roof panel.

REPAIR PROCEDURE G: Steps 58 through 61 apply to both My Sky MANUAL Roof Panels (Sales Code GWB) and My Sky POWER Roof Panels (Sales Code GWN).

58. Replace the spacer. Remove the rear roof panel from the vehicle. Set the panel on bench using a clean, soft cloth to protect the outer surface.
59. Using pliers or suitable tool, remove and discard the plastic spacer from the centering pin opposite side with latch (Fig. 14).
60. Install the new spacer (P/N 68324502AA) on the centering pin (Fig. 14).

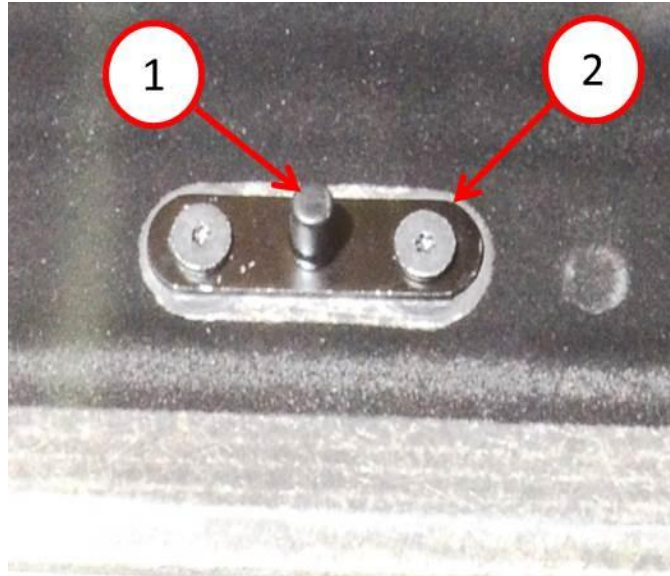


Fig. 14 Centering Pin And Spacer

- 1 - Spacer - #6832450AA
- 2 - Centering Pin

-
61. Install the roof panel on the vehicle.

REPAIR PROCEDURE H: Steps 62 through 68 apply to both My Sky MANUAL Roof Panels (Sales Code GWB) and My Sky POWER Roof Panels (Sales Code GWN).

62. Check for gaps. With roof panels in closed position, inspect seal between front and rear roof panels for gaps ([Fig. 15](#)).

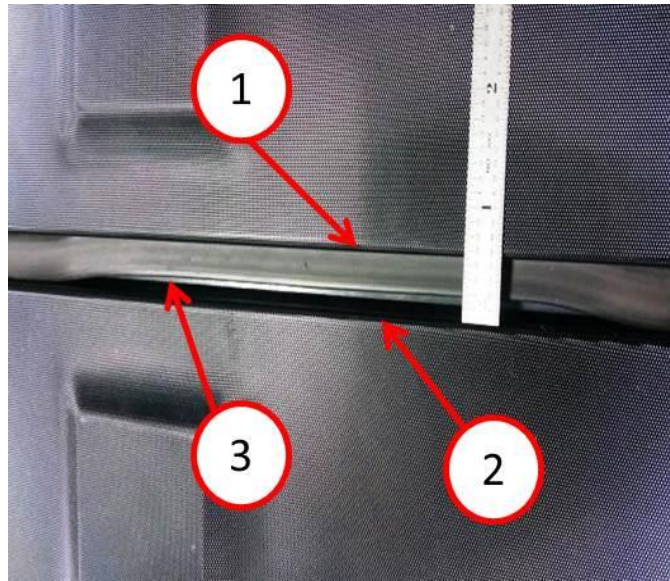


Fig. 15 Gap In Seal

1 - Rear Roof Panel

2 - Front Roof Panel

-
63. Where any gaps present between the seal and the rear roof panel?
- YES >>> Proceed to step [Step #64](#).
 - NO >>> This bulletin has been completed.
64. Remove the rear roof panel from the vehicle. Set the panel on bench using a clean, soft cloth to protect the outer surface.

65. Using 80 grit sandpaper, sand the entire front edge of rear the roof panel from left to right ([Fig. 16](#)).
66. Using 100 grit sandpaper, sand the entire front edge of the roof panel again ([Fig. 16](#)).

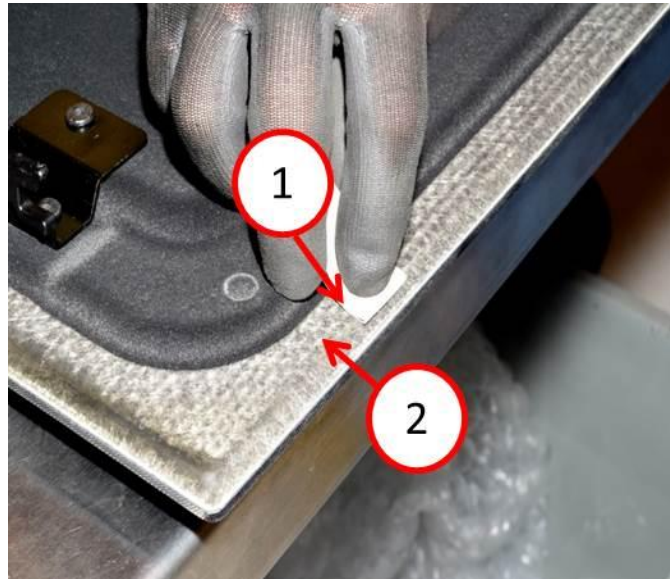


Fig. 16 Sanding Front Panel Edge

- 1 - Sandpaper
- 2 - Front Panel Edge

-
67. Install the roof panel on the vehicle and check for a seal gap.
 68. Is there still a seal gap between the seal and the rear roof panel?
 - a. YES >>> Repeat steps [Step #64](#) through [Step #67](#) until the gap is gone.
 - b. NO >>> This bulletin has been completed.

POLICY:

Reimbursable within the provisions of the warranty.

TIME ALLOWANCE:

Labor Operation No:	Description	Skill Category	Amount
23-21-50-92	Roof panel, My Sky/Sunroof - Repair Procedure (A & C-H) Sales Code GWN Only (0 - Introduction)	6 - Electrical and Body Systems	1.1 Hrs.
23-21-50-93	Roof panel, My Sky/Sunroof - Repair Procedure (C-H) Sales Code GWN Only (0 - Introduction)	6 - Electrical and Body Systems	0.8 Hrs.
23-21-50-94	Roof panel, My Sky/Sunroof - Repair Procedure (D-H) Sales Code GWN Only (0 - Introduction)	6 - Electrical and Body Systems	0.7 Hrs.
23-21-50-95	Roof panel, My Sky/Sunroof - Repair Procedure (E-H) Sales Code GWN Only (0 - Introduction)	6 - Electrical and Body Systems	0.6 Hrs.
23-21-50-96	Roof panel, My Sky/Sunroof - Repair Procedure (F-H) Sales Code GWN Only (0 - Introduction)	6 - Electrical and Body Systems	0.5 Hrs.
23-21-50-97	Roof panel, My Sky/Sunroof - Repair Procedure (G-H) Sales Code GWN Only (0 - Introduction)	6 - Electrical and Body Systems	0.4 Hrs.
23-21-50-98	Roof panel, My Sky/Sunroof - Repair Procedure (H) Sales Code GWN Only (0 - Introduction)	6 - Electrical and Body Systems	0.3 Hrs.
23-21-50-9A	Roof panel, My Sky/Sunroof - Repair Procedure (B-E, G and H) Sales Code GWB Only (0 - Introduction)	6 - Electrical and Body Systems	1.0 Hrs.
23-21-50-9B	Roof panel, My Sky/Sunroof - Repair Procedure (C-E, G and H) Sales Code GWB Only (0 - Introduction)	6 - Electrical and Body Systems	0.6 Hrs.
23-21-50-9C	Roof panel, My Sky/Sunroof - Repair Procedure (D and E, G and H) Sales Code GWB Only (0 - Introduction)	6 - Electrical and Body Systems	0.5 Hrs.

TIME ALLOWANCE - CONTINUED:

Labor Operation No:	Description	Skill Category	Amount
23-21-50-9D	Roof panel, My Sky/Sunroof - Repair Procedure (E, G and H) Sales Code GWB Only (0 - Introduction)	6 - Electrical and Body Systems	0.4 Hrs.
23-21-50-9E	Roof panel, My Sky/Sunroof - Repair Procedure (G and H) Sales Code GWB Only (0 - Introduction)	6 - Electrical and Body Systems	0.4 Hrs.
23-21-50-9F	Roof panel, My Sky/Sunroof - Repair Procedure (H) Sales Code GWB Only (0 - Introduction)	6 - Electrical and Body Systems	0.3 Hrs.

FAILURE CODE:

ZZ	Service Action
----	----------------