



**NUMBER:** 23-042-16

**GROUP:** Body

**DATE:** September 14, 2016

*This bulletin is supplied as technical information only and is not an authorization for repair. No part of this publication may be reproduced, stored in a retrieval system, or transmitted, in any form or by any means, electronic, mechanical, photocopying, or otherwise, without written permission of FCA US LLC.*

**THIS SERVICE BULLETIN IS ALSO BEING RELEASED AS RAPID RESPONSE TRANSMITTAL (RRT) 16-087. ALL APPLICABLE UN-SOLD RRT VIN's HAVE BEEN LOADED. TO VERIFY THAT THIS RRT SERVICE ACTION IS APPLICABLE TO THE UN-SOLD VEHICLE, USE VIP OR PERFORM A VIN SEARCH IN TECHCONNECT.**

***SUBJECT:***

Incorrect Wheel Certification Label

***OVERVIEW:***

This bulletin involves installing new wheel rim size overlay labels.

***MODELS:***

2013 - 2016 (MK) Jeep Compass/Patriot

**NOTE: This bulletin applies to vehicles within the following markets/countries:  
NAFTA.**

**NOTE: This bulletin applies to vehicles built on or before July 02, 2016 (MDH 0702XX) equipped with 16 X 6.5 Aluminum Wheels (Sales Code WNF).**

***SYMPTOM/CONDITION:***

Incorrect wheel rim size printed on certification label.

***DIAGNOSIS:***

If a customer's VIN is listed in VIP or your RRT VIN list, perform the repair.

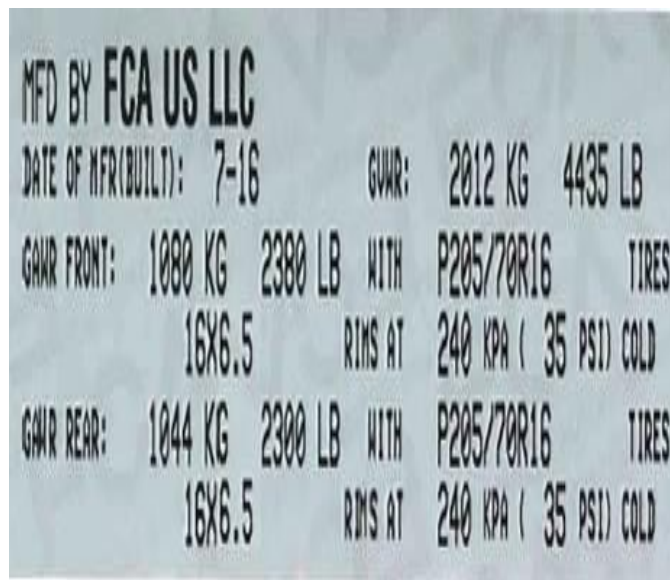
**PARTS REQUIRED:**

**NOTE: Sticker labels are for un-sold vehicles only. If additional or replacement labels are needed, order Part No. 68356528AA.**

Qty.	Part No.	Description
1	68356528AA	Certification Overlay Labels <b>(16X7.0)</b>

**REPAIR PROCEDURE:**

1. Open the driver's side door.
2. Locate the certification label on the door jamb surface ([Fig. 1](#)).

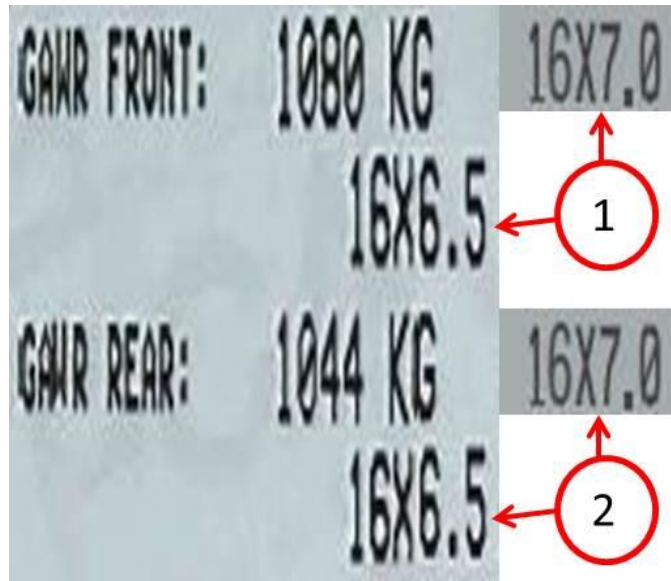


**Fig. 1 Incorrect Certification Label**

**NOTE: Do not remove the old certification label. Both new labels are to be placed over the old label.**

3. Clean the surface of the original certification label with isopropyl alcohol, glass cleaner or equivalent and a soft cloth.

4. Apply one of the new 16X7.0 certification overlay labels directly over the original 16X6.5 front wheel rim size and the other label over the rear wheel rim size (Fig. 2).



**Fig. 2 New Label Placement**

- 1 - New Front Label
  - 2 - New Rear Label
- 

5. Firmly press and smooth both overlay labels to ensure a good adhesion.

**POLICY:**

Reimbursable within the provisions of the warranty.

**TIME ALLOWANCE:**

Labor Operation No:	Description	Skill Category	Amount
23-01-05-96	Label, Tire/Wheel size Certification (0 - Introduction)	6 - Electrical and Body Systems	0.0 Hrs.

	Related		
95-23-01-50	Handling Fee for Installing Tire/Wheel Certification Label (0 - Introduction)		\$5.00

**FAILURE CODE:**

ZZ	Service Action
----	----------------