



NUMBER: 08-064-16

GROUP: Electrical

DATE: June 01, 2016

This bulletin is supplied as technical information only and is not an authorization for repair. No part of this publication may be reproduced, stored in a retrieval system, or transmitted, in any form or by any means, electronic, mechanical, photocopying, or otherwise, without written permission of FCA US LLC.

FOR HELP WITH USING wiTECH FOR ECU FLASH REPROGRAMMING, CLICK ON THE APPLICATION'S "HELP" TAB.

THE wiTECH SOFTWARE IS REQUIRED TO BE AT THE LATEST RELEASE BEFORE PERFORMING THIS PROCEDURE.

SUBJECT:

Headlamp Leveling Switch Position Not Correct

OVERVIEW:

This bulletin involves running the wiTECH function: Configure BUX Headlamp Parameters.

MODELS:

2014 - 2016 (KL) Jeep Cherokee

**NOTE: This bulletin applies to vehicles within the following markets/countries:
EMEA.**

**NOTE: This bulletin applies to vehicles equipped with Headlamp Leveling System
(Sales Code JKL).**

SYMPTOM/CONDITION:

Customers may describe that the headlamp leveling switch positions are opposite of the actual headlamp positions (Fig. 1). For example, switch down position is headlamps up and vice versa.



Fig. 1 Headlamp Leveling Switch

1 - Leveling Switch

DIAGNOSIS:

Using a Scan Tool (wiTECH) with the appropriate Diagnostic Procedures available in TechCONNECT, verify all systems are functioning as designed. If DTCs or symptom conditions, other than the ones listed above are present, record the issues on the repair order and repair as necessary before proceeding further with this bulletin.

If the customer describes the symptom/condition listed, perform the Repair Procedure.

REPAIR PROCEDURE:

NOTE: This procedure must be done after Body Control Module (BCM) has been replaced for all vehicles equipped with BUX Headlamp Leveling System (JKL).

1. Select the BCM icon.
2. Configure BUX headlamp Parameters. Detailed instructions for using the wiTECH Diagnostic Application are available by selecting the application's "MISC FUNCTIONS" tab (Fig. 2).

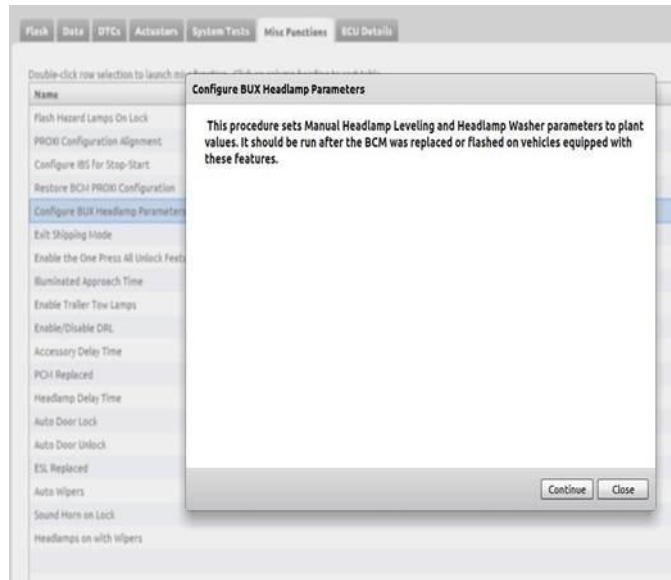


Fig. 2 Misc Function Tab Screen

3. Connect the wiTECH and go into the "Configure BUX Headlamp Parameters" tab. Follow all pop up messages (Fig. 3).

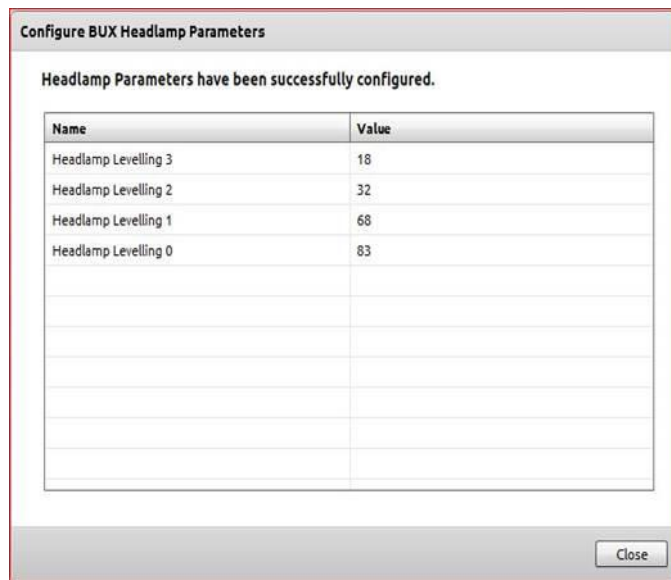


Fig. 3 BUX Headlamp Parameters

4. Clear any DTCs that may have been set in any module due to reprogramming. The wiTECH application will automatically present all DTCs after the flash and allow them to be cleared.

POLICY:

Reimbursable within the provisions of the warranty.

TIME ALLOWANCE:

Labor Operation No:	Description	Skill Category	Amount
18-19-02-BQ	Module, Body Control (BCM) - Configure BUX Headlamp Parameters (0 - Introduction)	6 - Electrical and Body Systems	0.2 Hrs.

FAILURE CODE:

The dealer must choose which failure code to use. If the customer came in with an issue and if the dealer finds a software update to correct that issue, use failure code CC, for all other use failure code RF.

- If the customer's concern matches the SYMPTOM/CONDITION identified in the Service Bulletin, failure code CC is to be used.
- If an available flash is completed while addressing a different customer concern, failure code RF is to be used.

CC	Customer Concern
RF	Routine Flash