



NUMBER: 23-006-16 REV. A

GROUP: Body

DATE: February 17, 2016

This bulletin is supplied as technical information only and is not an authorization for repair. No part of this publication may be reproduced, stored in a retrieval system, or transmitted, in any form or by any means, electronic, mechanical, photocopying, or otherwise, without written permission of FCA US LLC.

THIS BULLETIN SUPERSEDES SERVICE BULLETIN 23-006-16, DATED FEBRUARY 12, 2016, WHICH SHOULD BE REMOVED FROM YOUR FILES. ALL REVISIONS ARE HIGHLIGHTED WITH **ASTERISKS**** AND INCLUDE UPDATED BUILD DATE.**

THIS SERVICE BULLETIN IS ALSO BEING RELEASED AS RAPID RESPONSE TRANSMITTAL (RRT) 16-016. ALL APPLICABLE SOLD AND UN-SOLD RRT VIN'S HAVE BEEN LOADED. TO VERIFY THAT THIS RRT SERVICE ACTION IS APPLICABLE TO THE VEHICLE, USE VIP OR PERFORM A VIN SEARCH IN TECHCONNECT. ALL REPAIRS ARE REIMBURSABLE WITHIN THE PROVISIONS OF WARRANTY.

SUBJECT:

Right Front Door Outer Belt Molding Too High

OVERVIEW:

This bulletin involves inspecting and if necessary, repairing the right front outer belt molding height.

MODELS:

2016 (DS) Ram 1500 Pickup

NOTE: This bulletin applies to vehicles built on or after January 14, **2016**** (MDH 0114XX) and on or before January 20, ****2016**** (MDH 0120XX).**

SYMPTOM/CONDITION:

The customer may describe that the outer belt molding is sitting too high on the door.

DIAGNOSIS:

1. Inspect the right front outer belt molding for fit and finish.
2. Is the right front outer belt molding sitting too high on the door as shown in (Fig. 1)?
 - a. YES>>> Proceed to [Step #1](#).
 - b. NO>>> This bulletin has been completed, use LOP (23-51-16-9C) to close the active RRT.



Fig. 1 Outer Belt Molding Difference

If a customer's VIN is listed in VIP or your RRT VIN list, perform the repair. For all other customers that describe the symptom/condition listed above, perform the Repair Procedure.

PARTS REQUIRED:

Qty.	Part No.	Description
1 (AR)	NPN	3M® 08682 Single Step Primer = (30 mL)

REPAIR PROCEDURE:

1. Remove the outer belt molding retaining screw(Fig. 2).



Fig. 2 Screw Securing Belt Molding

2. Tape off area on B pillar to prevent marring of the surface.

NOTE: Use care not to damage the molding, Do not apply excessive outward force.

3. Insert a trim stick between the B pillar and belt molding (Fig. 3).



Fig. 3 Trim Stick

1 - Trim stick

- Use a file to open up the bottom of slot for the screw hole on the door (Fig. 4). The final height of the slot should be around 8mm (0.315 in). Do not exceed 10mm (0.4 in) slot height (Fig. 5). Be careful not to damage the surface or molding with the file.



Fig. 4 File Area

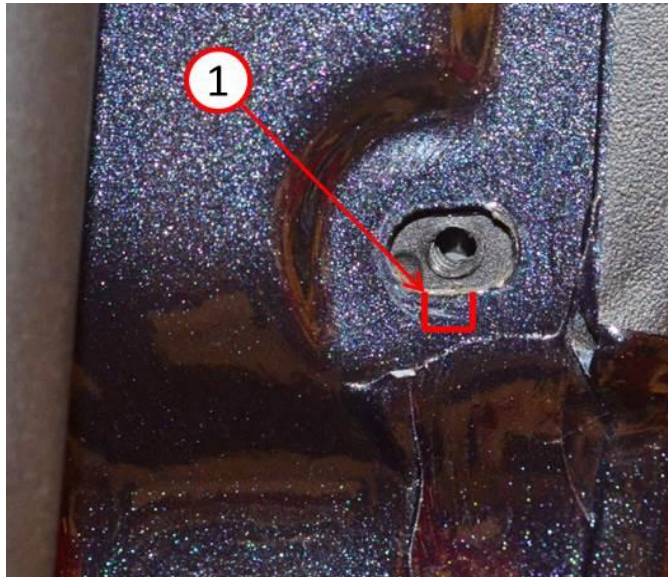


Fig. 5 Area To Be Filed

1 - Material To Be Removed Around 8mm (0.315 in)

-
- Remove the burrs and remove all residue.
 - Clean the areas to be painted using a cloth with a low solvent content or equivalent.
 - Apply a corrosion-preventor primer (3M® single step primer) or equivalent. Allow the primer to dry for approximately 10 minutes at a temperature of 60°-70°C (140°-158°F).

- 8. Remove the tape used to protect B pillar surface and trim stick (Fig. 3) install and align the outer belt molding back into place to match the rear door outer belt molding and install the screw (Fig. 2).

POLICY:

Reimbursable within the provisions of the warranty.

TIME ALLOWANCE:

Labor Operation No:	Description	Skill Category	Amount
23-51-16-9C	Molding, Outer Belt - Inspect (1 - Semi-Skilled)	6 - Electrical and Body Systems	0.0 Hrs.

	Related		
95-23-51-51	Handling Fee For Right Front Outer Belt Molding Height Inspection.		\$5.00

Labor Operation No:	Description	Skill Category	Amount
23-51-16-9D	Molding, Outer Belt - Repair (1 - Semi-Skilled)	6 - Electrical and Body Systems	0.4 Hrs.

FAILURE CODE:

ZZ	Service Action
----	----------------

PART REIMBURSEMENT DETAIL:

Part No:	Description
NPN	3M® 08682 Single Step Primer

NOTE: This part number is for reimbursement only and will need to be claimed for the value of 3M® 08682 or it will be rejected. If this is a non-MOPAR part or product, a copy of the invoice showing the purchase of the non-MOPAR part or product needs to be attached to the reimbursement claim.