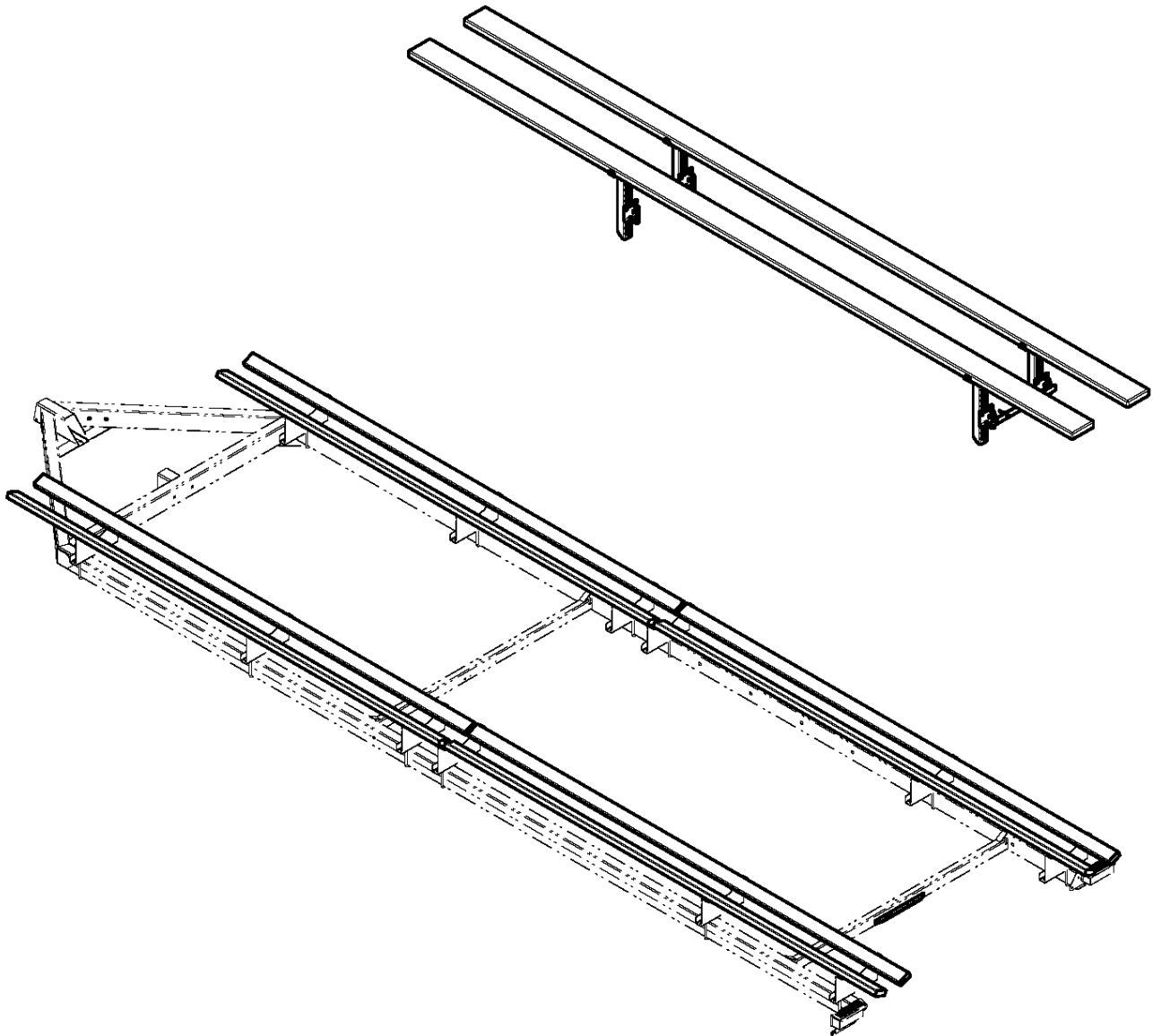


TA0236-00 & 03 TRITOON KIT 2 BUNKS / ROLLER PT2567, PT2958, & PT2967

The TA0236 Tritoon kit is used to convert a standard pontoon trailer into a trailer that is designed to properly support and transport a Tritoon boat.



ShoreLand'r offers its product line in painted finishes. When ordering parts, it is important that you specify the finish or color you have on your product. The 5-digit number along with a 2-digit space __, note that the parts can be purchased in various finishes.

00.....Galvanized

03.....Black

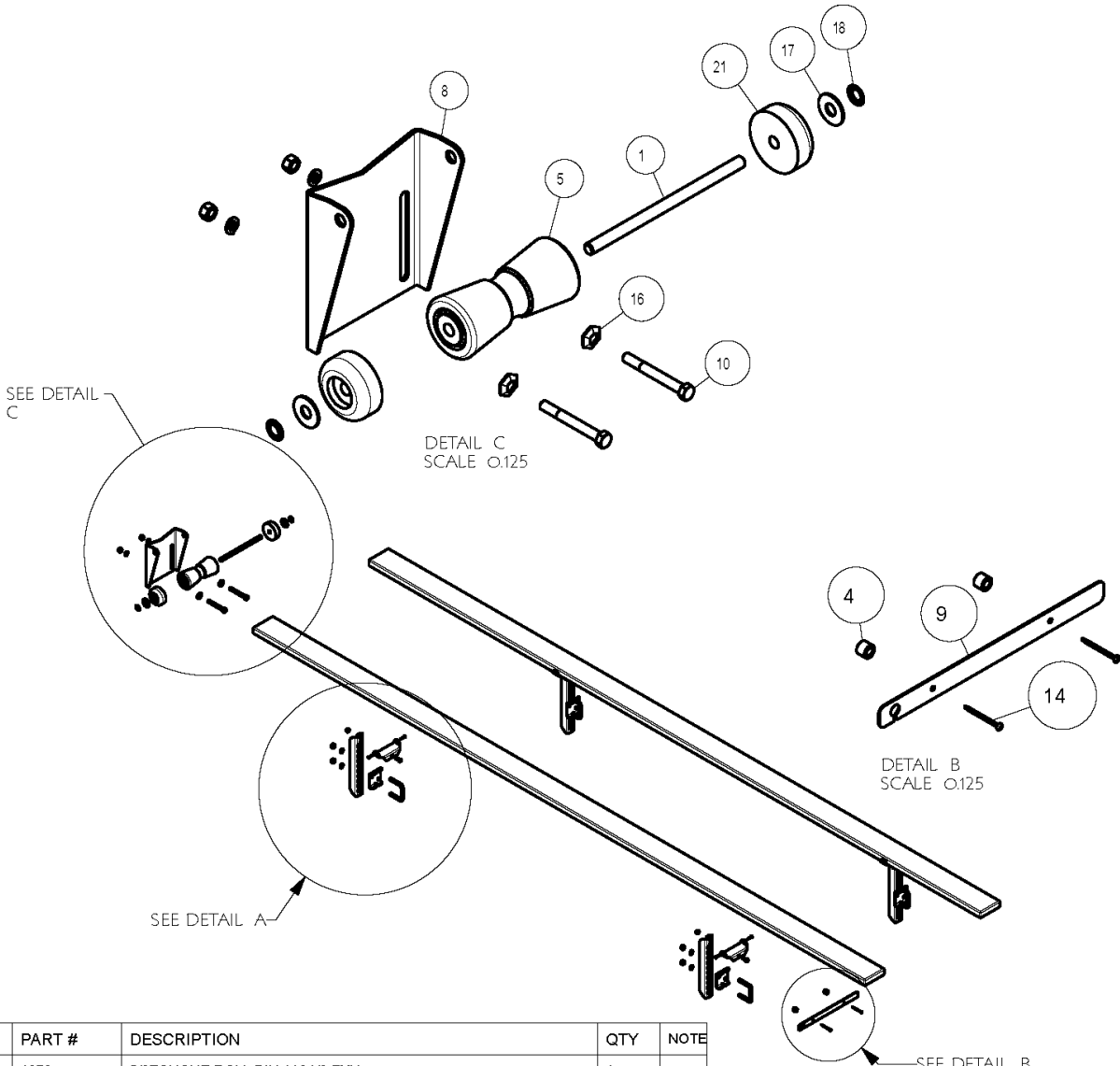
Cut banding on bundles and open bag and sort hardware and components.

- Locate the keel roller assembly that will be attached to the rear cross member of the front section of the frame. Align the holes in the assembly with those in the cross frame member.
- Attach it to the cross member using 1/2" x 4" hex bolts with pyramidal lock washers in the holes of the bracket. Secure with a 1/2" lock washers and hex nuts.
- Position the roller assembly so it is in its lowest position. Leave the bolt loose for now until the final adjustments are made.

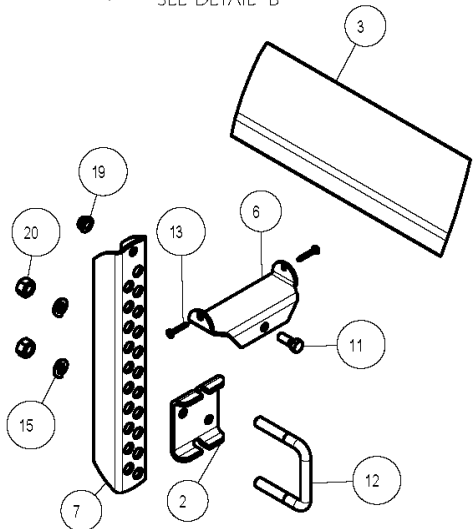
- Place a 1/2" x 3 9/16" x 3" square U-bolt around the support tube weldment just installed so the U-bolt legs are pointing to the front of the trailer.
- Locate one of the adjustable bunk brackets. Position it on the front side of the support tube weldment, align a pair of the lower adjustment holes with the legs of the U-bolt and then slide over the U-bolt legs. Next place on a 1/2" lock washers and hex nuts. Turn the nuts until they are finger tight only because they will need to be readjusted when the boat is put on the trailer.
- Repeat this process on the remaining brackets.
- Attach the bunk brackets to the top of the adjustable bunk brackets using 3/8" x 1" hex bolts and lock nuts. Tighten but do not over tighten because they must be allowed to pivot so the bunks can conform to the pontoon tube.
- Place one of the carpeted bunks on the top of the bunk brackets on one side of the trailer just installed so that the rear of the bunk is even with the rear of the other bunks on the trailer.
- Tap the bunk until it is completely down into the bunk bracket. Secure the bunk in place using two-No. 10 x 1 3/4" Phillips head screws.
- Repeat the process in step 5 on the front bracket.
- Repeat this process on the bunk on the other side of the trailer.

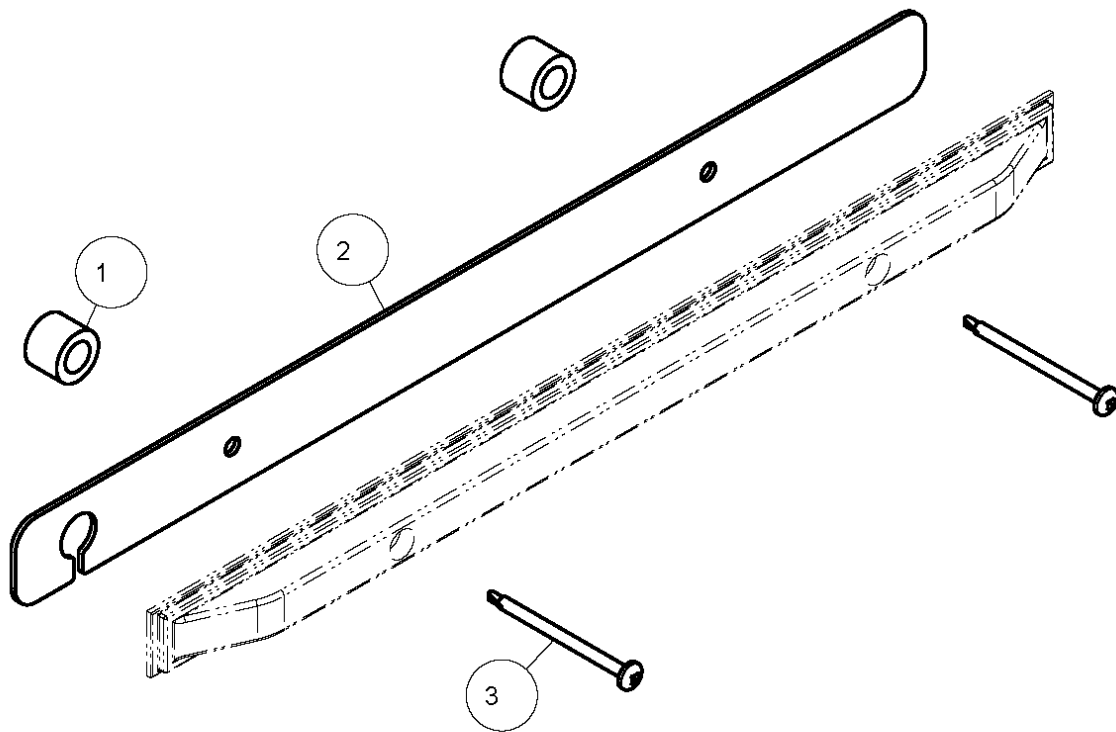
Adjusting Instructions

- Place the pontoon on the trailer so the outside tubes are properly supported. Once the boat is positioned properly front to rear, adjust the winch post to the pontoon.
 - Slide the tritoon bunks inward until there are in a location where they will support the tritoon tube. It may be necessary to raise the bunks up to another hole in the adjustable bunk brackets so they are high enough to reach and support the tube.
 - Once the proper hole is determined and they are slid into position, secure them to the cross members by tightening the U-bolts.
 - Adjust the keel roller bracket assembly up by loosening hex bolt left loose when it was assembled. Raise the roller assembly upward until it contacts the tube. The roller can add extra support to the tube.
 - If it does not reach the tube, place in the highest position that you can. The main objective of the roller is to keep the tube from contacting the front weldment when loading and unloading. If during adjustment the three light cluster is not allowing the brackets to move far enough to the middle of the trailer you can use the kit on the last page.
- Installation is complete.



ITEM	PART #	DESCRIPTION	QTY	NOTE
1	4272	5/8 TONGUE ROLL PIN 11&1/8 ZYU	1	
2	60462	ADJUSTABLE BUNK CLAMP	4	
3	62315	BUNK ASSY 2X6X13FT DECKBOAT	2	
4	63486	BUSHING	2	
5	65528	8IN KEEL ROLLER	1	
6	68664	2X6 BUNK BRKT SPUN GALV.	4	
7	71899	ADJ BUNK BRKT	4	
8	71900	8" ROLLER BRACKET	1	
9	72282	ALUM BACKING PLATE 3 LIGHT CLUSTER LED	1	
10	0110116	HH 1/2-13 X 4 1/4 CS GR5	2	
11	0140040	HH 3/8-16 X 1 CS GR5	4	
12	0310384	SUB 1/2 X 3 9/16 X 3	4	
13	0810930	SCREW SELFTAP #10-12X1 1/4 TYPE A	8	
14	0810982	SCREW SELFTAP #10-16 x 2 1/2 SQ PAN SELF DRILLER ZINC	2	
15	1310040	LOCKWASHER 1/2 S/T MED	10	
16	1310045	LOCKWASHER 1/2 PYRAMIDAL	2	
17	1340105	WASHER USS FLAT 5/8	2	
18	1410221	PUSHNUT PALNUT 5/8 ZP	2	
19	1440101	HEX LOCKNUT FLANGE 3/8-16 W/T	4	
20	1440159	HEX NUT FINISH 1/2-13	10	
21	3510053	ROLLER 3 1/2IN ODX5/8IN ID ENDC	2	





ITEM	PART #	DESCRIPTION	QTY	NOTE
1	63486	BUSHING	2	
2	72282	ALUM BACKING PLATE 3 LIGHT CLUSTER LED	1	
3	0810982	SCREW SELFTAP #10-16 x 2 1/2 SQ PAN SELF DRILLER ZINC	2	

1. To use this kit remove the screws from the three light cluster.
2. Feed the wire thru the slot.
3. Align the holes in the light with those in the bracket and insert the longer screws.
4. Place the bushings over the screws and insert into the holes from the previous screws and tighten securely.