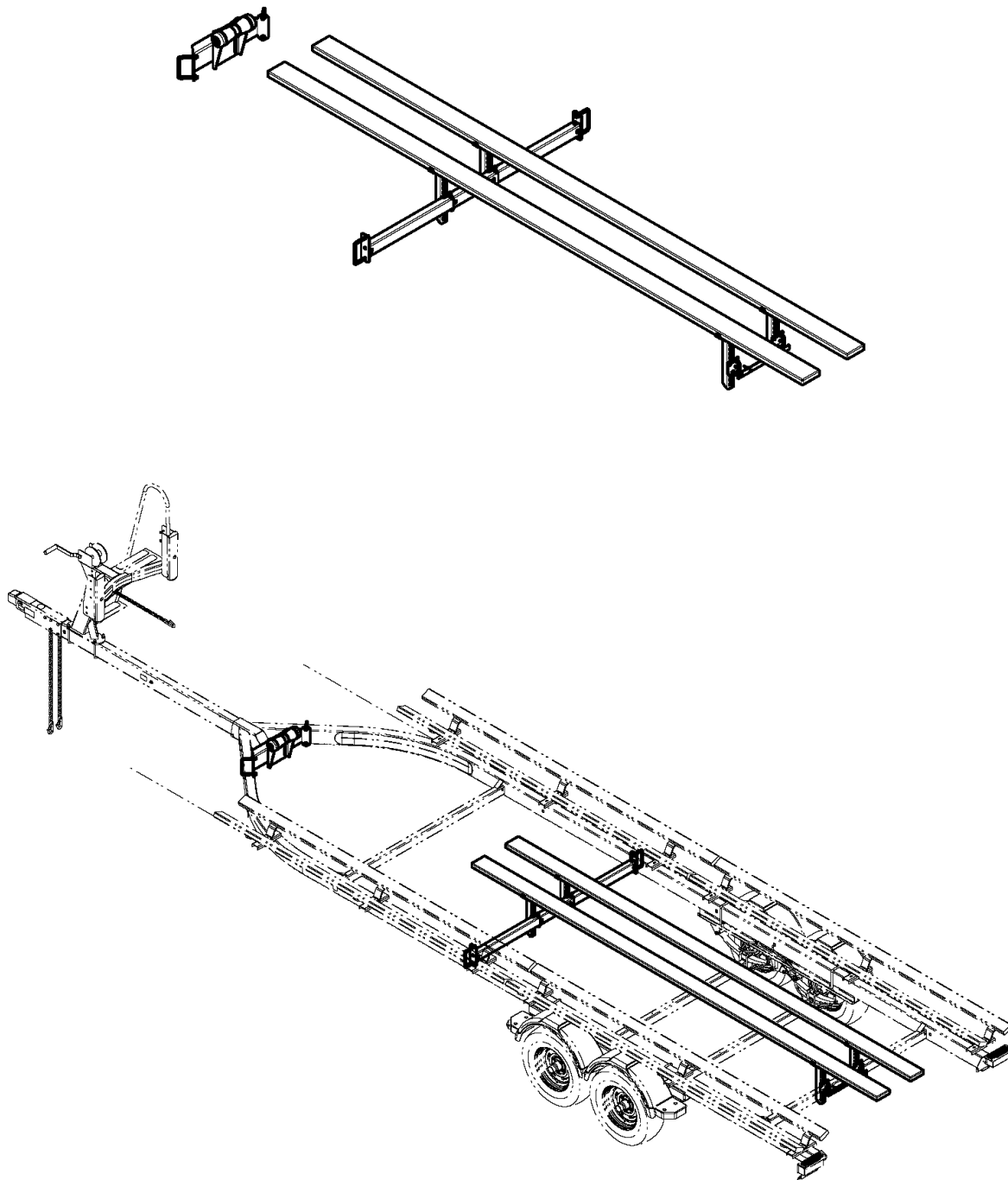


TA0232-00 & 03 TRITOON CENTER SUPPORT KIT 2 BUNKS 1 SUPPORT TUBE

The TA0232 tritoon kit is used to convert a standard pontoon trailer into a trailer that is designed to properly support and transport a tritoon boat.



The tongue supplied in the longer pontoon frame is 103" long. In the event that the trailer you are planning on converting only has a 90" tongue, a 103" tongue only can be purchased as a TA0158 Kit. If the actuator is also needed, the TA0133 includes the 103" tongue with the actuator already assembled in the proper position.

TA0232 Pontoon Tritoon Kit - No Tongue

62315 Bunk Assembly 2X6X13'
63745-__ Tritoon Support Tube Weldment
71515-__ Tritoon Hardware Box – 1 Support

ShoreLand'r offers its product line in painted finishes. When ordering parts, it is important that you specify the finish or color you have on your product. The 5-digit number along with a 2-digit space __, note that the parts can be purchased in various finishes.

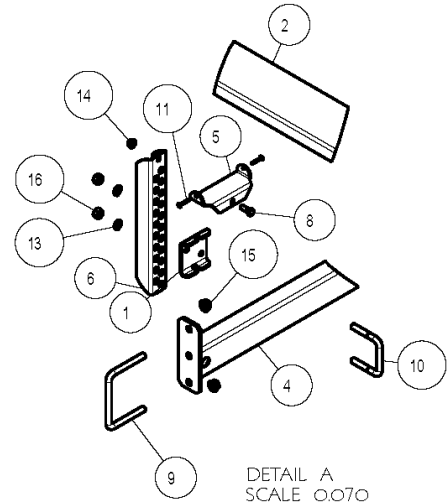
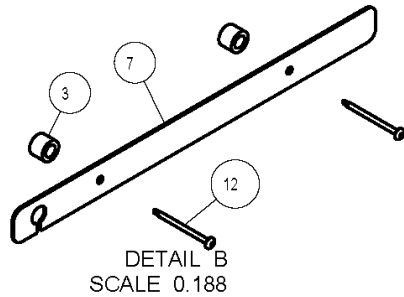
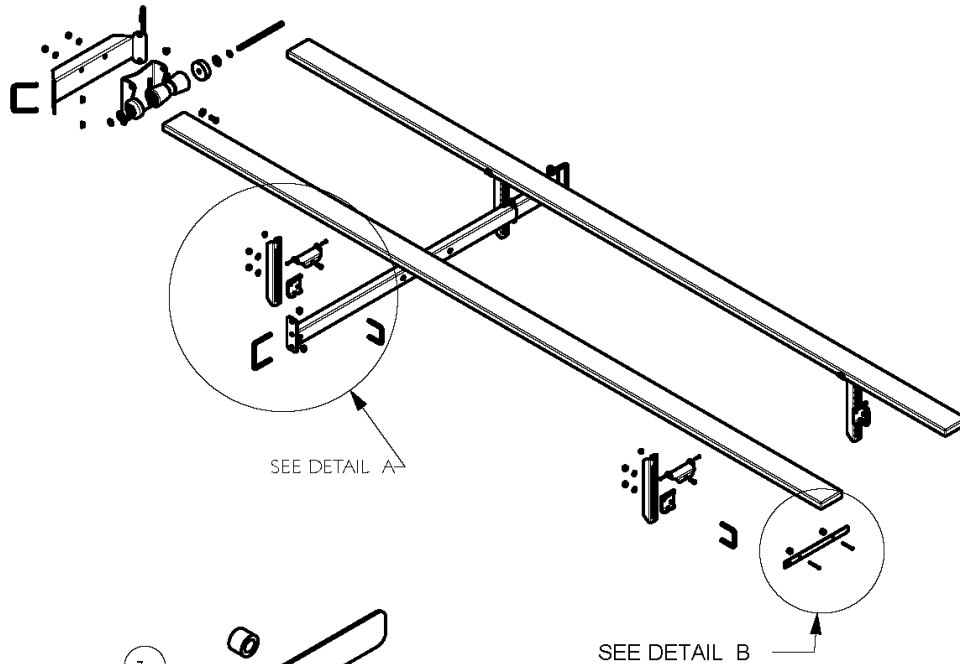
00.....Galvanized
03.....Black

Frame Roller Assembly

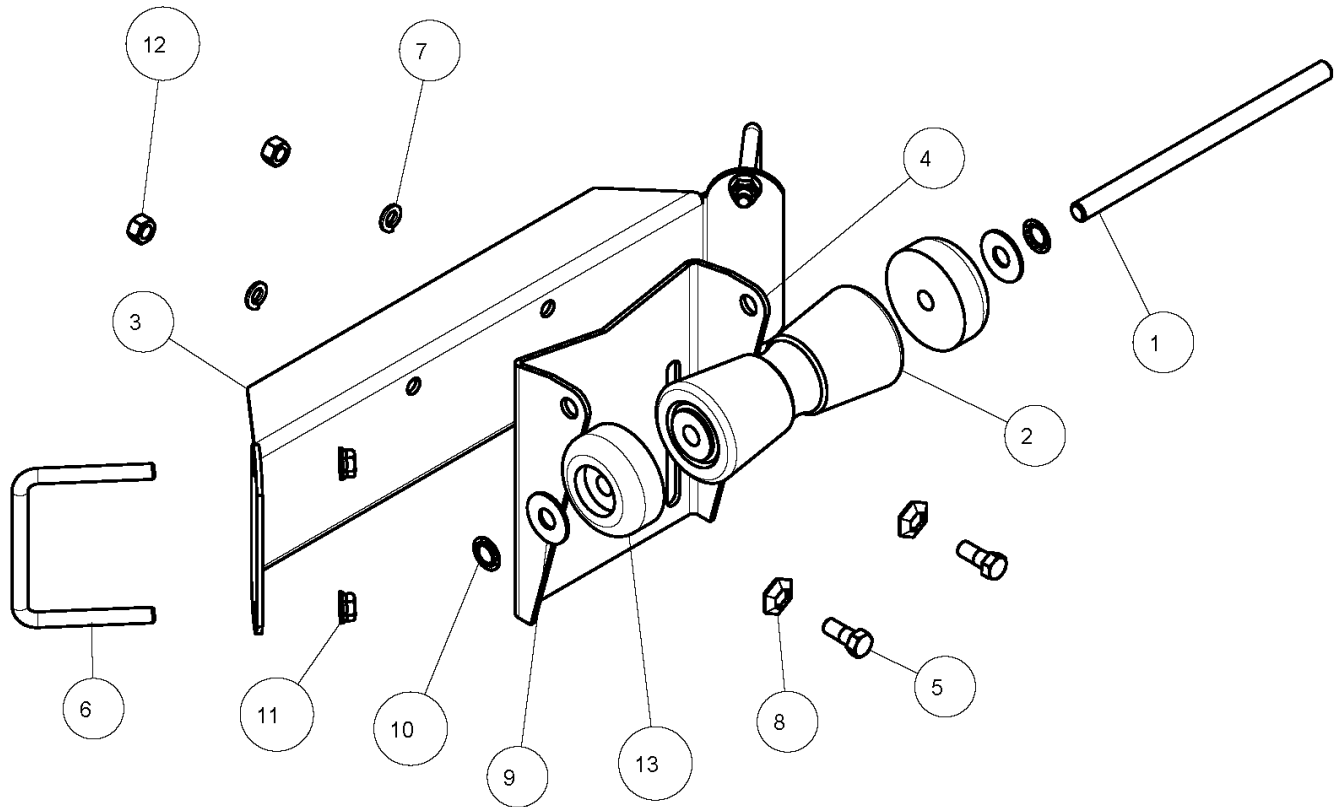
- Locate the roller mounting bracket that will be attached to the side frames. Place the roller mounting bracket between the side frames as shown and place 1/2" x 5 9/16" x 4" U-bolts over the side frame and thru the holes in the bracket and secure with 1/2" flange locknuts.
- Attach the roller bracket to the mounting bracket by inserting 1/2" X 1 1/4" hex bolt thru star lock washer thru the slot in the roller bracket and thru the hole in the mounting bracket. Secure with a 1/2" lock washer and a 1/2" hex nut. Repeat for the other side. (DO NOT TIGHTEN)

Tritoon Support Tube Weldments

- Place the support tube weldment 85" forward from the rear cross member. Attach it to the side frames using 1/2" x 5 9/16" x 4" U-bolts and 1/2" flange lock nuts. Position the support tube weldment so it is square in the frame. Tighten.
- Place a 1/2" x 3 9/16" x 4 1/4" square U-bolt around the support tube weldment just installed so the U-bolt legs are pointing to the front of the trailer.
- Locate one of the adjustable bunk brackets. Position it on the front side of the support tube weldment, align a pair of the lower adjustment holes with the legs of the U-bolt and then slide over the U-bolt legs. Next place on a 1/2" lock washers and hex nuts. Turn the nuts until they are finger tight only because they will need to be readjusted when the boat is put on the trailer.
- Repeat this process on the remaining brackets.
- Attach the bunk brackets to the top of the adjustable bunk brackets using 3/8" x 1" hex bolts and lock nuts. Tighten but do not over tighten because they must be allowed to pivot so the bunks can conform to the pontoon tube.
- Place one of the carpeted bunks on the top of the bunk brackets on one side of the trailer just installed so that the rear of the bunk is even with the rear of the other bunks on the trailer.
- Tap the bunk until it is completely down into the bunk bracket. Secure the bunk in place using two-No. 10 x 1 3/4" Phillips head screws.
- Repeat the process in step 5 on the front bracket.
- Repeat this process on the bunk on the other side of the trailer.



ITEM	PART #	DESCRIPTION	QTY	NOTE
1	60462	ADJUSTABLE BUNK CLAMP	4	
2	62315	BUNK ASSY 2X6X13FT DECKBOAT	2	
3	63486	BUSHING	2	
4	63745	TRITOON SUPPORT TUBE WMENT	1	
5	68664	2X6 BUNK BRKT SPUN GALV.	4	
6	71899	ADJ BUNK BRKT	4	
7	72282	ALUM BACKING PLATE 3 LIGHT CLUSTER LED	1	
8	0140040	HH 3/8-16 X 1 CS GR5	4	
9	0310365	SUB 1/2-13 X 5 9/16 X 4	2	
10	0310384	SUB 1/2 X 3 9/16 X 3	4	
11	0810930	SCREW SELFTAP #10-12X1 1/4 TYPE A	8	
12	0810982	SCREW SELFTAP #10-16 x 2 1/2 SQ PAN SELF DRILLER ZINC	2	
13	1310040	LOCKWASHER 1/2 S/T MED	8	
14	1440101	HEX LOCKNUT FLANGE 3/8-16 W/T	4	
15	1440102	HEX LOCKNUT FLANGE 1/2-13 W/T	4	
16	1440159	HEX NUT FINISH 1/2-13	8	



ITEM	PART #	DESCRIPTION	QTY	NOTE
1	4272	5/8 TONGUE ROLL PIN 11&1/8 ZYU	1	
2	65528	8IN KEEL ROLLER	1	
3	71516	ROLLER SUPPORT BRACKET TRI-TOON	1	
4	71900	8" ROLLER BRACKET	1	
5	0140092	HH 1/2-13 X 1 1/4 CS GR5	2	
6	0310365	SUB 1/2-13 X 5 9/16 X 4	2	
7	1310040	LOCKWASHER 1/2 S/T MED	2	
8	1310045	LOCKWASHER 1/2 PYRAMIDAL	2	
9	1340105	WASHER USS FLAT 5/8	2	
10	1410221	PUSHNUT PALNUT 5/8 ZP	2	
11	1440102	HEX LOCKNUT FLANGE 1/2-13 W/T	4	
12	1440159	HEX NUT FINISH 1/2-13	2	
13	3510053	ROLLER 3 1/2IN ODX5/8IN ID ENDC	2	

Adjusting Instructions

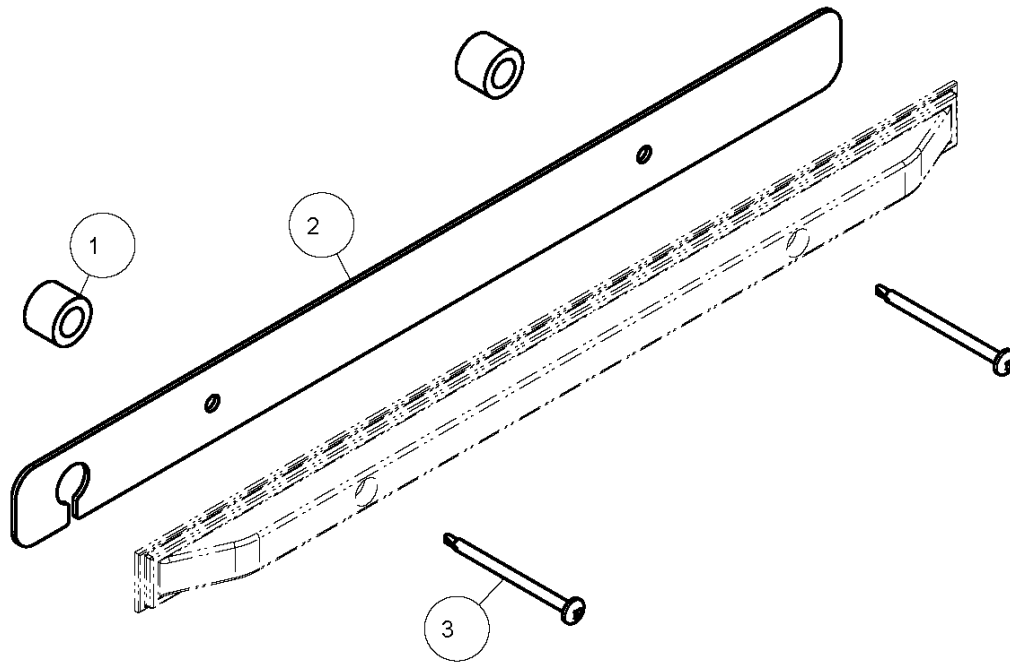
- Place the pontoon on the trailer so the outside tubes are properly supported. Once the boat is positioned properly front to rear, adjust the winch post to the pontoon.
- Attach the winch strap into the bow eye and tighten. Then tighten the U-bolts securing the winch post to the tongue.
- Slide the tritoon bunks inward until there are in a location where they will support the tritoon tube. It may be necessary to raise the bunks up to another hole in the adjustable bunk brackets so they are high enough to reach and support the tube.
- Once the proper hole is determined and they are slid into position, secure them to the support tube weldments by tightening the U-bolts.

- Adjust the roller bracket assembly up by sliding the 1/2" x 1 1/4" hex bolt left loose when it was assembled. Slide the roller assembly upward until it contacts the tube. The roller can add extra support to the tube.

- The main objective of the roller is to keep the tube from contacting the tongue when loading and unloading.

If during adjustment the three light cluster is not allowing the brackets to move far enough to the middle of the trailer you can use the kit on the last page.

Installation is complete.



ITEM	PART #	DESCRIPTION	QTY	NOTE
1	63486	BUSHING	2	
2	72282	ALUM BACKING PLATE 3 LIGHT CLUSTER LED	1	
3	0810982	SCREW SELFTAP #10-16 x 2 1/2 SQ PAN SELF DRILLER ZINC	2	

1. To use this kit remove the screws from the three light cluster.
2. Feed the wire thru the slot.
3. Align the holes in the light with those in the bracket and insert the longer screws.
4. Place the bushings over the screws and insert into the holes from the previous screws and tighten securely.