



## Service Bulletin 528

### Issue 1 - January 2016

Subject: Sidestand Switch Magnet				
Bulletin Number	Models Affected	VIN Range		Markets Affected
528	Street Twin	Up to	746535	All Markets

#### Background Information

Internal investigations have identified the possibility of the sidestand switch magnet on the above models becoming detached. Under such circumstances, this will prevent the operator from putting the motorcycle into motion from a stationary start-up position; thereby preventing the motorcycle from being ridden.

#### Customer Contact Instructions

Motorcycles in the affected VIN range must be modified prior to delivery to the customer, or at the next visit to the dealership.

#### Identification of Affected Motorcycles

Street Twin models listed in the VIN range above.

#### Note:

- Some affected motorcycles listed in the VIN range will have been modified and repaired by Triumph prior to their release from the factory.
- The modified motorcycles can be identified by checking the 'Outstanding Service Bulletins' on Warranty Online.

#### Warranty Claim Instructions

Bulletin Number	Fault code	Repair Code	Description	Repair Time allowance
528	020842928	995280	Sidestand switch magnet - Installation of heat shrink tubing.	0.09 hours
528	020842928	995281	Inspect sidestand magnet - Loose or missing.	0.02 hours

#### Genuine Parts Information

Bulletin Number	Part Number	Description	Quantity
528	T2084416	Heat shrink tubing, 12mm, Adhesive, Cut	1
528	A9930007	Cleaning wipe	1

---

## Parts ordering instructions

**For Triumph Subsidiary and Overseas Distributor dealers using Triumph Warranty On-Line with Parts Auto Ordering Flag switched on:** Order all repair parts by submitting a New Prior through the Warranty On-Line system. Entering the above repair code in a New Prior will automatically add the parts required and labour times for this Service Bulletin.

**For Overseas Distributor dealers NOT using Triumph Warranty On-Line or for Overseas Distributor dealers using Triumph Warranty On-Line with Parts Auto Ordering Flag switched off:** Orders should be placed using the normal parts ordering procedure.

## Genuine Parts Return Instructions

Not applicable

## Other Instructions

Before returning the motorcycle to the customer, download the latest tune to the engine control module using the current version of the Triumph diagnostic software.

Once completed, please mark the Service Record Book that the requirements of this bulletin have been complied with.

## Sidestand Switch Magnet

Inspect the magnet and install the heat shrink tubing to the sidestand switch magnet lug as described in the procedure below.

### Warning

Before starting work, ensure the motorcycle is stabilised and adequately supported. This will help prevent it from falling and causing injury to the operator or damage to the motorcycle.

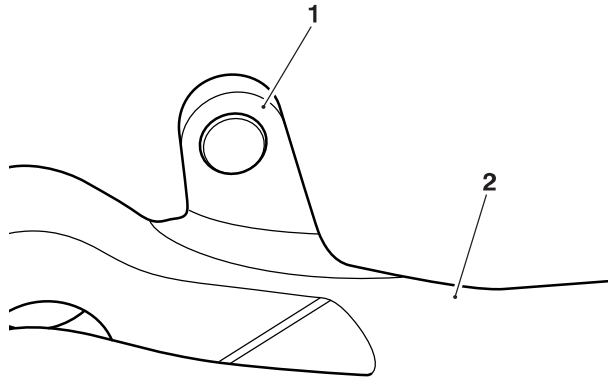
### Warning

If the engine has recently been running, the exhaust components may be hot to the touch. Contact with the hot components may cause damage to exposed skin. To avoid skin damage, always allow the hot parts to cool before working on the exhaust system.

### Warning

The air from a heat gun, and the heat gun itself, are very hot. Wear suitable protective clothing and do not point the heat gun at any part of your body as serious burns may result.

1. Place the motorcycle on a paddock stand, taking care not to damage the rear ABS sensor wire.
2. Lower the sidestand to allow access to the sidestand switch magnet.
3. Check the magnet is present. If the magnet is present, proceed with the following instruction. If the magnet is not present, contact Triumph Customer Service.
4. Clean the magnet lug area of the sidestand using the cleaning wipe provided.

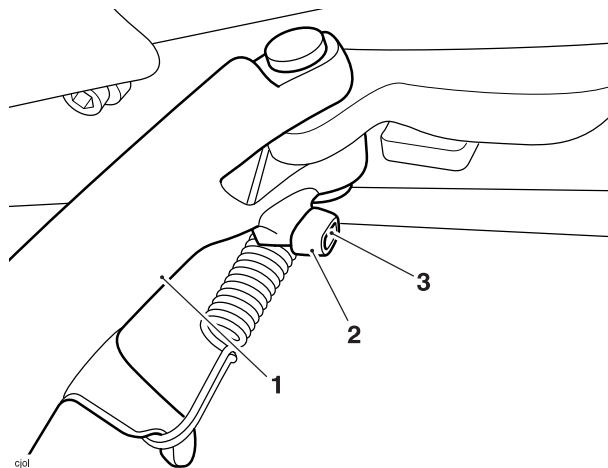


1. Sidestand switch magnet lug
2. Sidestand

### ⚠ Caution

When fitting the heat shrink tubing, take care not to burn any part of the sidestand switch, bodywork, or wiring harness or serious damage will result. Excessive heat will also cause the tubing to become brittle, rendering it useless.

5. Slide the heat shrink tubing over the magnet lug on the sidestand, ensuring the heat shrink tubing covers the magnet. Using a heat gun with a temperature between 150°C and 200°C (302°F and 392°F), heat all sides of the heat shrink tubing, to allow it to bond to the magnet lug.



1. Sidestand
2. Heat shrink tubing
3. Sidestand switch magnet lug

6. Continue to heat all sides of the heat shrink tubing until the adhesive lining has visibly melted.
7. Allow the heat shrink tubing to cool.
8. Visually check the adhesive lining has melted and bonded to the magnet lug.
9. Ensure the heat shrink tubing is secure.
10. Remove the motorcycle from the paddock stand and place it on the sidestand.
11. Check for the correct operation of the sidestand switch. The engine should continue to run after the sidestand has been raised and a gear is selected.

---

**Circulation**

Initial and date when read and return to central file holder

<b>Service Manager</b>	<b>Parts Manager</b>	<b>Sales Manager</b>	<b>Workshop Supervisor</b>	<b>Technician 1</b>	<b>Technician 2</b>

---