

# Leather Care Best Practices

**Service Category** Vehicle Interior

**Section** Seat

**Market** USA

Lexus Supports  
ASE Certification 

## Applicability

YEAR(S)	MODEL(S)	ADDITIONAL INFORMATION
2010 - 2017	CT200H, ES300H, ES350, GS F, GS200T, GS350, GS450H, GX460, HS250H, IS F, IS200T, IS250, IS250C, IS300, IS350, IS350C, LFA, LS460, LS600H, LX570, NX200T, NX300H, RC F, RC200T, RC300, RC350, RX350, RX450H	

## Introduction

The purpose of this Technical Service Bulletin is to elevate awareness and provide best practices for leather care in Lexus vehicles. As an additional resource, if the vehicle is equipped with factory leather seats, the vehicle Owner's Manual will highlight the importance of proper maintenance and provide guidance for care.

### NOTE

Leather and NuLuxe seat covers that are replaced for dye transfer or soiling are NOT eligible for replacement under warranty. Likewise, damage caused by unapproved cleaning methods are NOT eligible for replacement under warranty.

## Warranty Information

OP CODE	DESCRIPTION	TIME	OFP	T1	T2
N/A	Not Applicable to Warranty	—	—	—	—

# Leather Care Best Practices

## Background

Leather is a natural material covering used on seat covers and other interior trim that requires periodic maintenance and cleaning comparable to the exterior of the vehicle. Usage will dictate frequency and schedule.

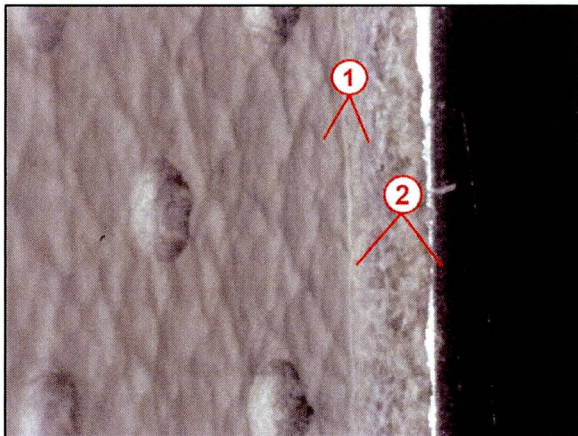
### NOTE

- Appearance concerns such as cracking, peeling and dye transfer may occur to the protective coating of the leather top coat. Abrasive cleaning methods expose the top coat to the surface and effectively remove resistance and protection against dye transfer.
- Figure 1 and 2 illustrate the cross section layers of leather seat material. Protective coating applied to the top coat portion of the material provides resistance to staining if not removed by abrasive methods.

### CAUTION

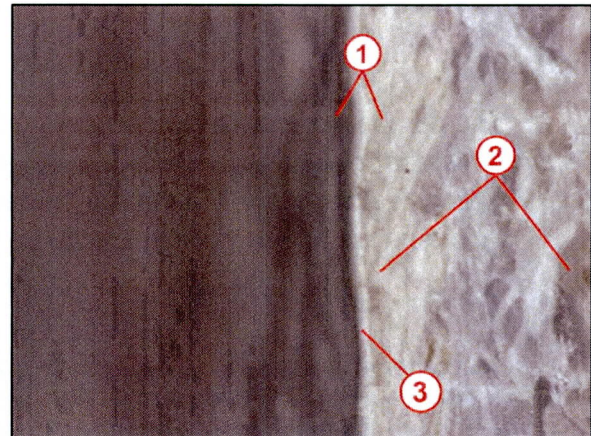
Many commercial cleaners damage factory coatings and protectants by utilizing solvents and propellants that destroy factory coatings. Strictly adhere to these instructions to ensure the longevity of the vehicles interior.

Figure 1.



1	Top coat
2	Material backing

Figure 2. Top layer close-up



1	Top coat
2	Material backing
3	Protective coating

Figure 3. Wear caused by outside influence





# Leather Care Best Practices

## Leather Care Procedure

Listed below for reference are excerpts from the 2016 GS Owner's Manual on how to maintain and care for leather seat products. All Owner's Manuals include a brief description on leather care.

<p><b>382</b> 6-1. Maintenance and care</p> <p><b>Cleaning and protecting the vehicle interior</b></p> <p>The following procedures will help protect your vehicle's interior and keep it in top condition:</p> <p><b>Protecting the vehicle interior</b></p> <p>Remove dirt and dust using a vacuum cleaner. Wipe dirty surfaces with a cloth dampened with lukewarm water.</p> <p>For surfaces that are still dirty, use a diluted water solution of approximately 1% neutral detergent. Afterward, firmly wring out any excess water from a cloth dampened with water, and then wipe off all remaining traces of detergent.</p> <p><b>Cleaning the areas with satin-finish metal accents</b></p> <ul style="list-style-type: none"> <li>Remove dirt using a soft cloth or synthetic chamois dampened in a baking soda (sodium bicarbonate) solution.</li> <li>Use a solution of approximately 9% baking soda dissolved in water.</li> <li>Wipe the surface with a dry, soft cloth to remove any remaining moisture.</li> </ul> <p><b>Cleaning the leather areas</b></p> <ul style="list-style-type: none"> <li>Remove dirt and dust using a vacuum cleaner.</li> <li>Wipe off any excess dirt and dust with a soft cloth dampened with diluted detergent.</li> <li>Use a diluted water solution of approximately 5% neutral wool detergent.</li> <li>Wring out any excess water from the cloth and thoroughly wipe off all remaining traces of detergent.</li> <li>Wipe the surface with a dry, soft cloth to remove any remaining moisture.</li> <li>Allow the leather to dry in a shaded and ventilated area.</li> </ul> <p><b>Cleaning the synthetic leather areas</b></p> <ul style="list-style-type: none"> <li>Remove loose dirt using a vacuum cleaner.</li> <li>Apply a mild soap solution to the synthetic leather using a sponge or soft cloth.</li> <li>Allow the solution to soak in for a few minutes. Remove the dirt and wipe off the solution with a clean, damp cloth.</li> </ul>	<p><b>384</b> 6-1. Maintenance and care</p> <p><b>NOTICE</b></p> <ul style="list-style-type: none"> <li><b>Cleaning detergents</b> <ul style="list-style-type: none"> <li>Do not use the following types of detergent, as they may discolor the vehicle interior or cause streaks or damage to painted surfaces:                     <ul style="list-style-type: none"> <li>Non-seat portions: Organic substances such as benzene or gasoline, alkaline or acidic solutions, dye, and bleach</li> <li>Seats: Alkaline or acidic solutions, such as thinner, benzene, and alcohol</li> </ul> </li> <li>Do not use polish wax or polish cleaner. The instrument panels or other interior part's painted surface may be damaged.</li> </ul> </li> <li><b>Preventing damage to leather surfaces</b> <p>Observe the following precautions to avoid damage to and deterioration of leather surfaces:</p> <ul style="list-style-type: none"> <li>Remove any dust or dirt from leather surfaces immediately.</li> <li>Do not expose the vehicle to direct sunlight for extended periods of time. Park the vehicle in the shade, especially during summer.</li> <li>Do not place items made of vinyl, plastic, or containing wax on the upholstery, as they may stick to the leather surface if the vehicle interior heats up significantly.</li> </ul> </li> <li><b>Water on the floor</b> <p>Do not wash the vehicle floor with water.</p> <p>Vehicle systems such as the audio system may be damaged if water comes into contact with electrical components such as the audio system above or under the floor of the vehicle. Water may also cause the body to rust.</p> </li> <li><b>When cleaning the inside of the windshield (vehicles with Lexus Safety System+)</b> <p>Do not allow glass cleaner to contact the lens. Also, do not touch the lens. (→P 233)</p> </li> <li><b>Cleaning the inside of the rear window</b> <ul style="list-style-type: none"> <li>Do not use glass cleaner to clean the rear window, as this may cause damage to the rear window defogger heater wires or antenna. Use a cloth dampened with lukewarm water to gently wipe the window clean. Wipe the window in strokes running parallel to the heater wires or antenna.</li> <li>Be careful not to scratch or damage the heater wires or antenna.</li> </ul> </li> </ul>
--	---

**NOTICE**

- Harsh cleaning practices will remove some or all of the protective coats applied to leather during production and will degrade the longevity of the material over time. Vehicle leather should **ONLY** be cleaned by hand with water and mild detergent.
- Do **NOT** apply cleaners directly to the leather.

- Do NOT:
  - Use mechanical means of cleaning other than hand cleaning (ex. brushes, sanders, or steel wool).
  - Use harsh cleaners that may contain solvents or propellants.
  - Let stains sit.
  - Gouge, scratch, or use abrasive materials against the surface.
  - Apply cleaner directly to the leather surface.

Figure 4.



## Leather Care Best Practices

---

### Leather Care Procedure (Continued)

2. Do:

- Hand clean.
- Dry step: dust off surface with microfiber cloth or gently vacuum the surface.
- Wet step: general surface cleaning with microfiber cloth moistened with clean water.
- Apply cleaners to microfiber towels instead of directly to the seat.
- Wet step: spot clean localized stains with microfiber cloth soaked in baby soap solution rubbing the cloth with moderate hand pressure.
- Wet step: wipe off residues with a clean, wet microfiber cloth.
- Dry step: finish drying surface with microfiber.
- Clean frequently (when soiling is first noticed).
- Use clean, high quality microfiber cloths.
- Remove loose dust or dirt prior to cleaning.