



**Tiffin Motorhomes, Inc.
105 2nd Street NW
Red Bay, AL 35582
256-356-8661**

**SB-52
Terminating Awning Wires on 2016 45OP Allegro Buses
With 2nd Paramount Awning Option**

February 8, 2016

Dear Tiffin Customer,

It has come to our attention that some of the awning wires were not properly terminated on some 2016 45OP Allegro Buses. The specific wires only have power on them when the awning is being opened or closed. If this wiring is not corrected, some damage to the awning's circuit board could result.

We have included instructions on inspecting the wiring and correcting this problem. Please take this letter, the enclosed instructions and the completion form to a dealer *or* service center of your choice to have this work done. We are allowing 30 minutes for this repair to be completed.

If you have any questions about this notice, please contact the Tiffin warranty department at 256-356-8661 extension 2176 or email jeannie.madden@tiffinmotorhomes.com

We regret any inconvenience this action may cause, but feel certain you understand our interest in the continued use and enjoyment of your motorhome.

Thank you,

Tiffin Motorhomes, Inc.
Enclosures

**Properly Terminate Awning Wires for All 2016 Buses with 2nd Paramount Awning Option
Tiffin Motorhomes, Inc.**

Work

Instruction Number: Service Bulletin 52 (WI-297)

Effective Date: 1/19/16

Revision: 00

Page 1 of 5

Purpose: To provide instructions on how to Properly Terminate Awning Wires for All Bus and Zephyr with 2nd Paramount Awning Option

TOOLS NEEDED:

1. Drill
1. Flat head screwdriver
1. square drill bit
1. Philips drill bit
1. Insulated Wire cutters
1. Wire strippers

PARTS NEEDED:

1. JUNCTION BOX 8 CU 1 GNG SIDE MOUNT
1. PLATE BLANK 1 GNG WH SCR ON
4. 3/4X1 1/2X17 1/2 SPF Screws

Procedure:

1. Turn off all House power.
2. Remove the upper overhead panel above the driver's console, using a drill and a square drill bit.



**Properly Terminate Awning Wires for All 2016 Buses with 2nd Paramount Awning Option
Tiffin Motorhomes, Inc.**

Work

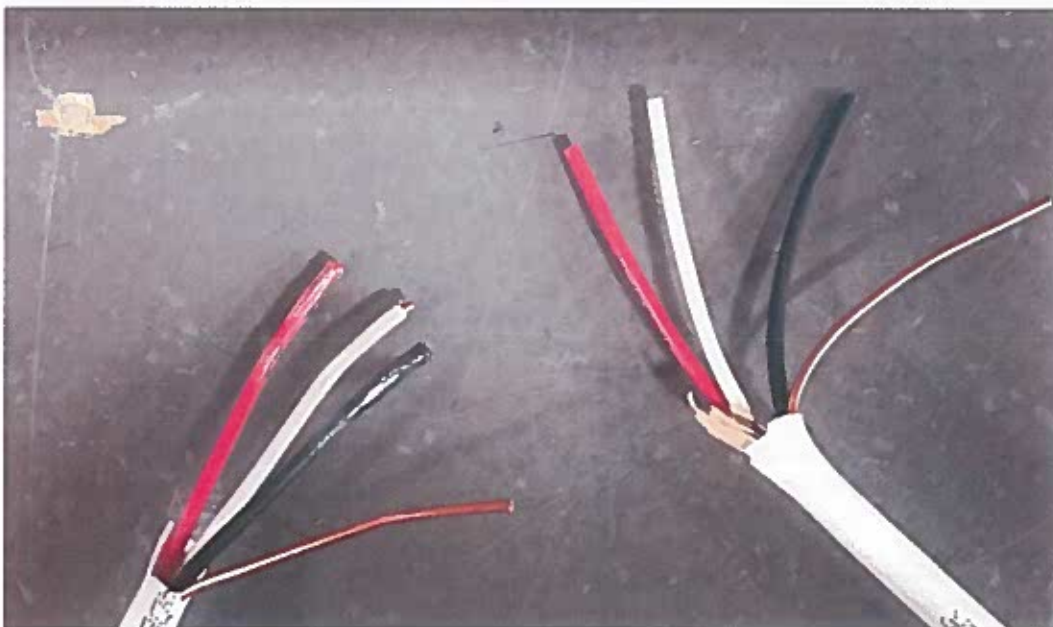
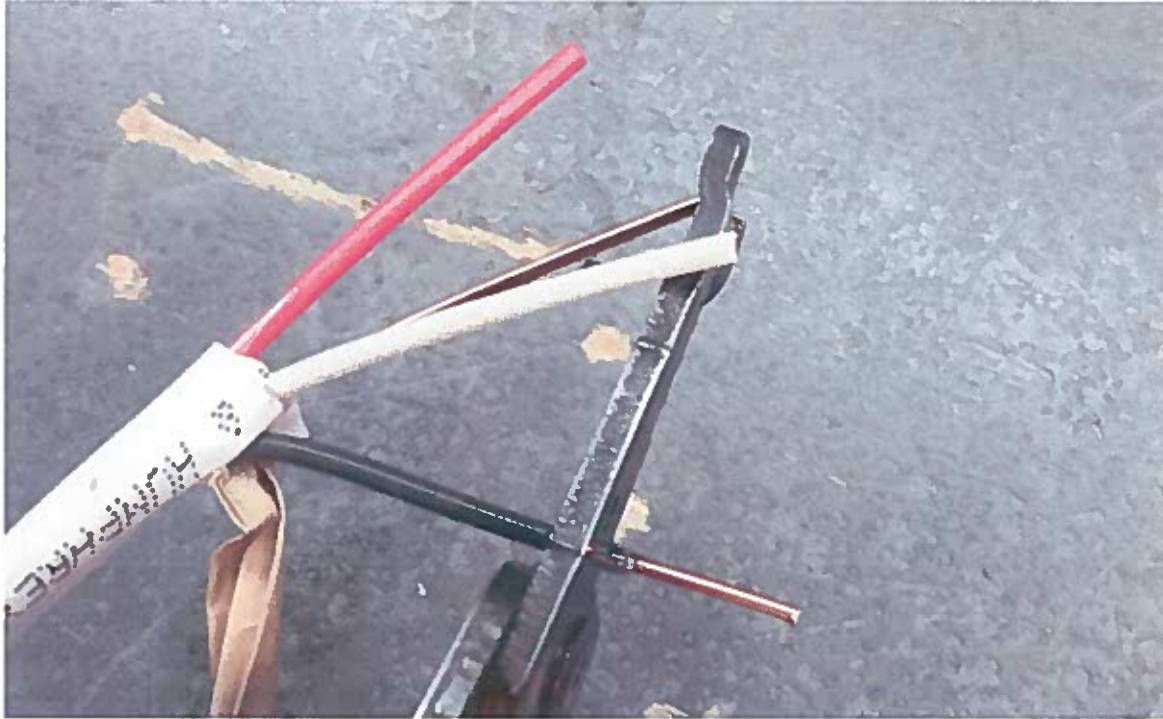
Instruction Number: Service Bulletin 52 (WI-297)

Effective Date: 1/19/16

Revision: 00

Page 2 of 5

3. Find two 110V 14/3 with ground Romex wires (The Insolation will be white) made up of two black, two red, two white and two ground wires. They are connected together by wire nuts and likely taped together by electrical tape. The connection should be less than a foot from the panel you removed in the previous step.
4. Remove the wire tape and wire nuts one at a time as to prevent the copper from touching anything.
5. Using insulated wire cutters remove all exposed copper on all the wires except the ground wire.



**Properly Terminate Awning Wires for All 2016 Buses with 2nd Paramount Awning Option
Tiffin Motorhomes, Inc.**

Work

Instruction Number: Service Bulletin 52 (WI-297)

Effective Date: 1/19/16

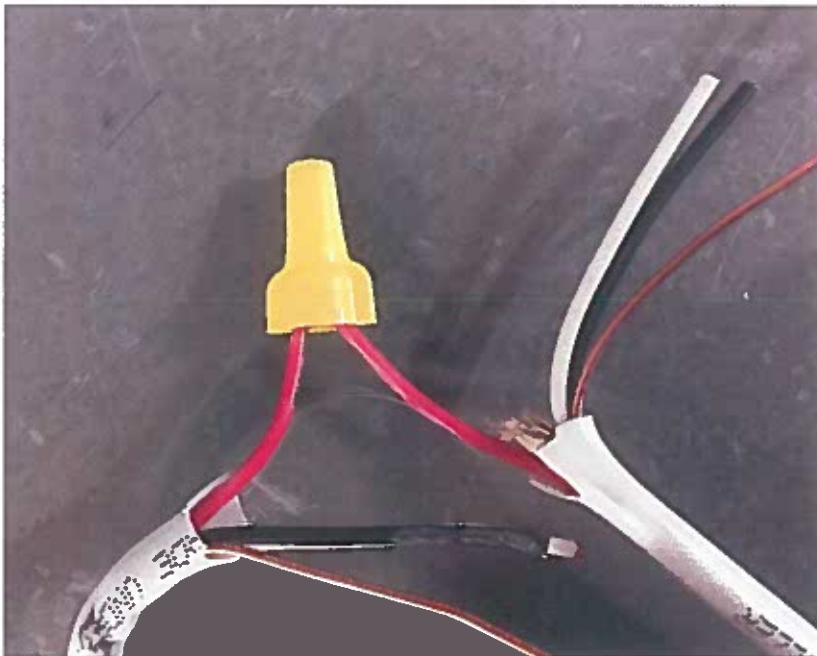
Revision: 00

Page 3 of 5

6. Insert the wires into the JUNCTION BOX 8 CU 1 GNG SIDE MOUNT



7. For one color, use wire strippers to remove the insulation. There should be a maximum of ½" exposed copper on the end of the wire. Make the connection to the color you started with prior to stripping any wires of another color.



**Properly Terminate Awning Wires for All 2016 Buses with 2nd Paramount Awning Option
Tiffin Motorhomes, Inc.**

Work

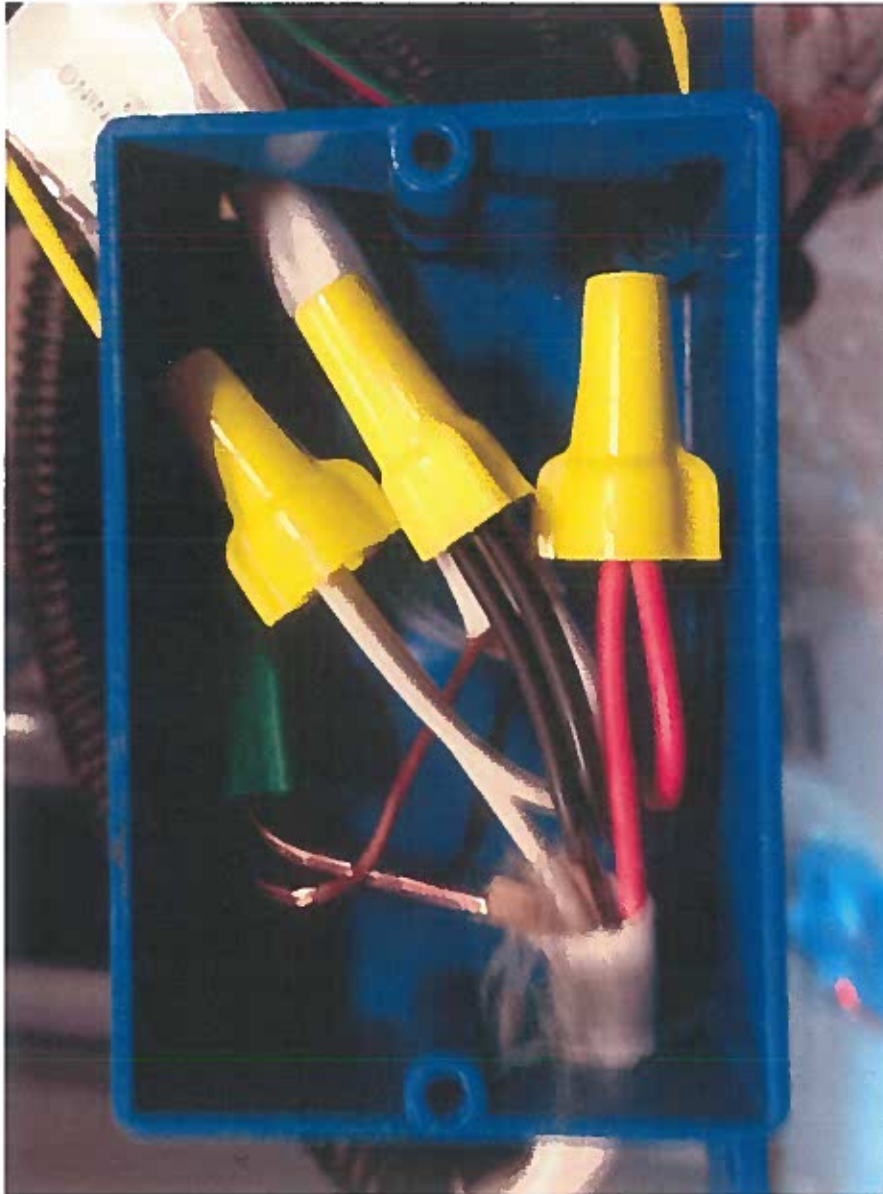
Instruction Number: Service Bulletin 52 (WI-297)

Effective Date: 1/19/16

Revision: 00

Page 4 of 5

- Using a wire nut secure the wires together. Note: Connections must be made Red to Red, White to White, Black to Black, and Ground to Ground. Make sure there is no copper visible on any connections with the exception of the ground wire.



**Properly Terminate Awning Wires for All 2016 Buses with 2nd Paramount Awning Option
Tiffin Motorhomes, Inc.**

Work

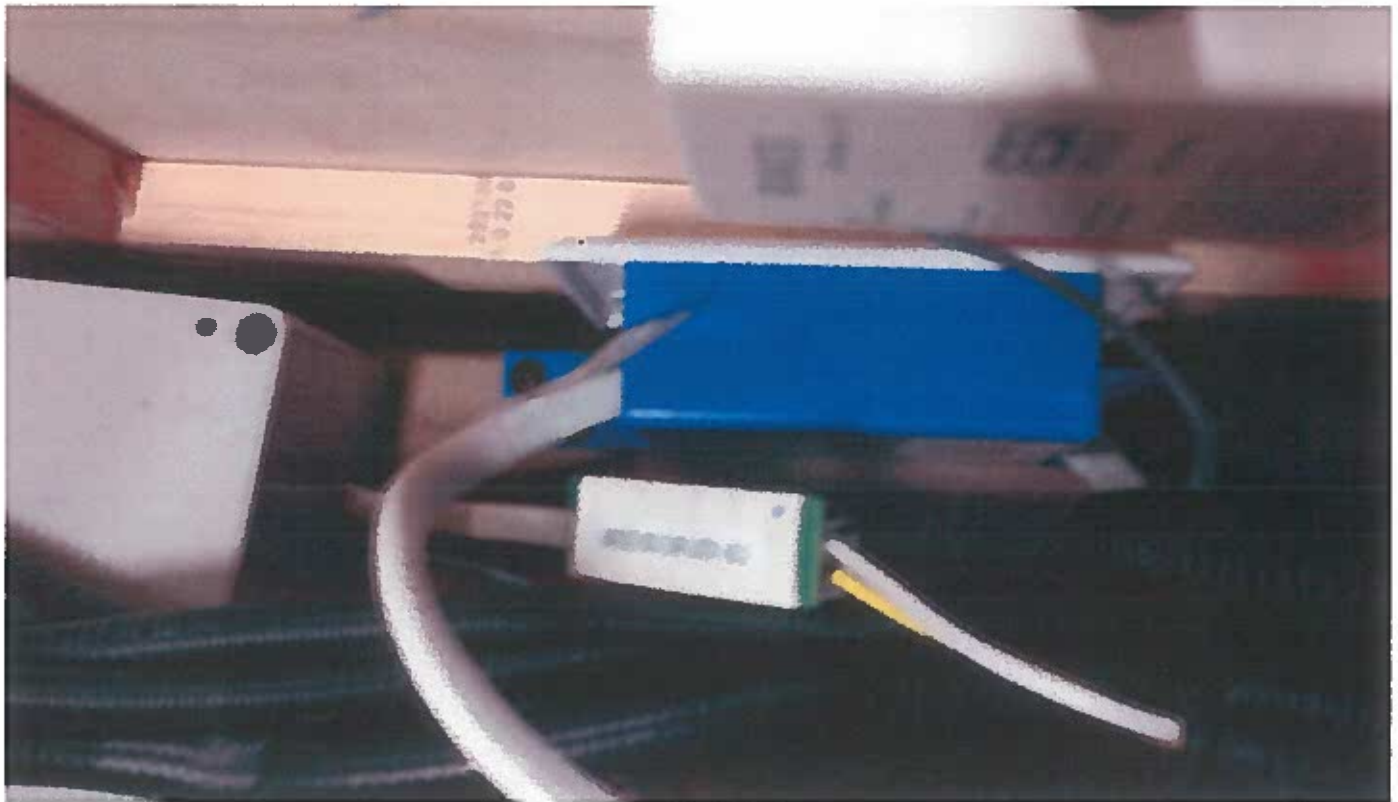
Instruction Number: Service Bulletin 52 (WI-297)

Effective Date: 1/19/16

Revision: 00

Page 5 of 5

9. Using a flat head screwdriver secure the PLATE BLANK 1 GNG WH SCR ON to the JUNCTION BOX 8 CU 1 GNG SIDE MOUNT.
10. Attach the JUNCTION BOX 8 CU 1 GNG SIDE MOUNT to the wood as seen below, using four 3/4X1 1/2X17 1/2 SPF Screws.



11. Reattach the panel you removed in step 2.