

Loading Sill Guard

Concern: **Retrofitting**

Model Year: **As of 2014**

Note: A perfectly fitting, transparent protective film for the loading sill (upper area of the rear bumper) is available for all Macan (95B) vehicles (⇒ *Figure 1*).

The protective film protects the rear bumper when loading and unloading the luggage compartment.

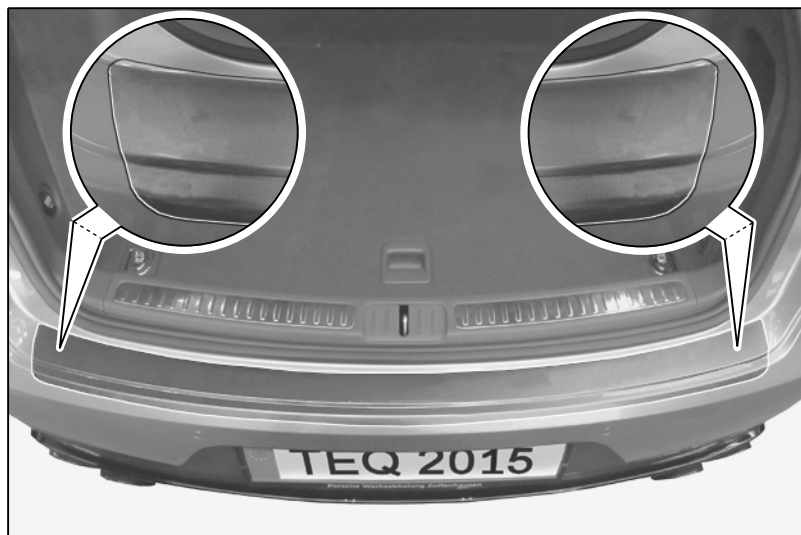


Figure 1

Parts Info: **95B.044.800.28**

⇒ Loading sill guard

Parts list:

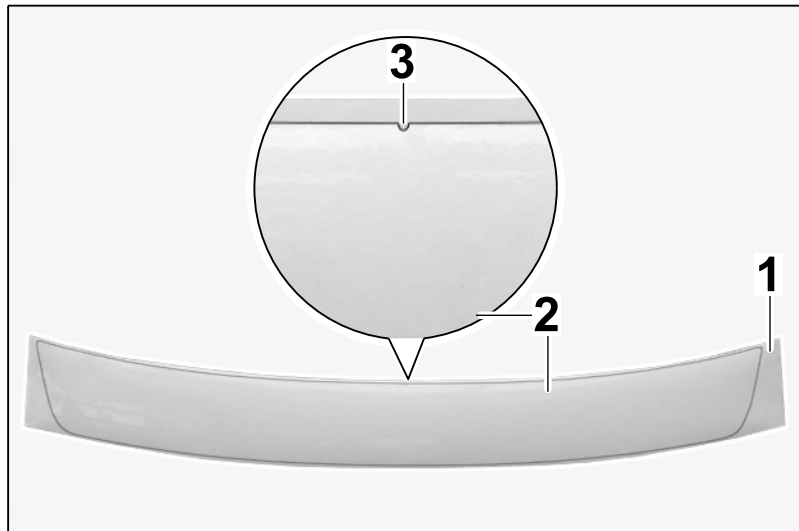


Figure 2

1 x Loading sill guard \Rightarrow Figure 2, comprising:
 Backing sheet \Rightarrow Figure 2-1-;
 Protective film -210 μm thick-, \Rightarrow Figure 2-2-
 Material: Multi-layer POLYURETHANE (PUR)-based film
 incl. marking \Rightarrow Figure 2-3-;

Materials:

----- Isopropanol/alcohol or spirits (commercially available)

----- Cleaning cloths (commercially available)

----- Liquid soap (commercially available)

Tools:

Plastic squeegee

NOTICE**Incorrect procedure**

- Risk of damage to paintwork
- \Rightarrow Do not use tools with sharp edges.
- \Rightarrow Cover the area you are working on.
- \Rightarrow Do not use aggressive cleaning agents/solvents.

Work Procedure: 1 Preparatory work

1.1 Open rear lid.

1.2 Clean bonding area (top of rear bumper ⇒ *Figure 3-1*-) using isopropanol (alcohol or spirits) to remove any dust and grease.

- 1 – Bonding area on top of rear bumper
- 2 – soap solution for "wet bonding"



Information

Tests have shown that the logos are best applied "wet".

The following soap solution mixture is ideal: 3 drops of dish washing liquid mixed in 1 quart of tap water.

1.3 Prepare soap solution for "wet bonding" (see Information).

1.4 Coat bonding area (⇒ *Figure 3-1*-) with soap solution.

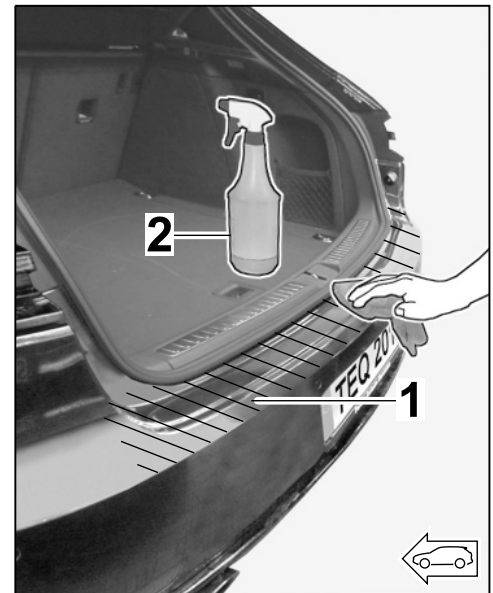


Figure 3

NOTICE

Protective films not prepared/fitted correctly

- Risk of damage to protective films
- Inadequate bonding of protective film(s)
- ⇒ Freshly painted surfaces must be dried fully to ensure that they are completely free of solvents.
- ⇒ Carefully clean the areas on which you intend to stick the film to ensure that all traces of oil, grease and silicone are completely removed.
- ⇒ Do not touch the bonding surfaces.
- ⇒ Only touch adhesive side of protective film in the middle and not at the corners or along the edges (if contact is unavoidable).
- ⇒ Object (protective film, vehicle, etc.) and ambient temperature Minimum temperature 15°C .
- ⇒ Optimal adhesion of the protective film(s) to the vehicle is guaranteed after approx. 48 hours. Do not put any pressure on the protective film(s) (e.g. using a car wash) during this period.

**Information**

Working temperature (object and ambient temperature) of 59° F. (15° C.) to 95° F. (35° C.).

2 Fitting loading sill guard

- 1 – Backing sheet
- 2 – Protective film
- 3 (2) – Soap solution for "wet bonding"

2.1 Pull backing sheet off protective film and coat protective film with soap solution(⇒ *Figure 4*).

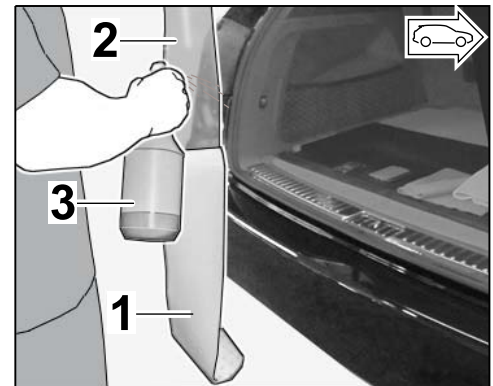


Figure 4

2.2 Fit and position protective film on the bumper.

- 1 – Marking, see also Figure 2, inset
- 2 – Lock bar on lower part of lock
- 3 (2) – Edge of bumper

Possible fixing points on rear bumper
(⇒ *Figure 5*).

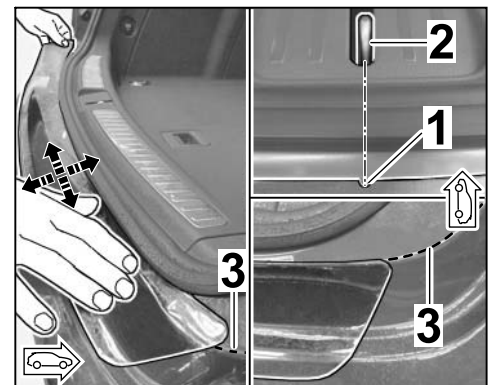


Figure 5

2.3 Spread the soap solution in overlapping strokes with a plastic squeegee as far as the edge of the protective strip (⇒ *Figure 6*).

- A – Top of rear bumper
- B – Bead in rear bumper

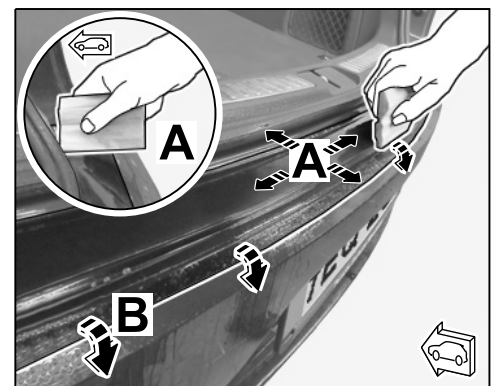


Figure 6

- 2.4 Carefully wipe remaining soap solution off the rear bumper (⇒ *Figure 7*).
- 2.5 After fitting the protective film, check that it is attached securely to the vehicle.

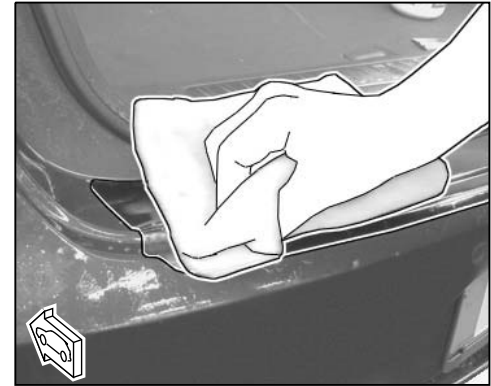


Figure 7

63 69 23 00: –Fitting protective film (1 ea.)–

Labor time: **39 TU**

- Includes:
- Cleaning bonding area on vehicle and making soap solution.
 - Affixing protective film and performing final check.

Important Notice: Technical Bulletins issued by Porsche Cars North America, Inc. are intended only for use by professional automotive technicians who have attended Porsche service training courses. They are written to inform those technicians of conditions that may occur on some Porsche vehicles, or to provide information that could assist in the proper servicing of a vehicle. Porsche special tools may be necessary in order to perform certain operations identified in these bulletins. Use of tools and procedures other than those Porsche recommends in these bulletins may be detrimental to the safe operation of your vehicle, and may endanger the people working on it. Properly trained Porsche technicians have the equipment, tools, safety instructions, and know-how to do the job properly and safely. If a particular condition is described, do not assume that the bulletin applies to your vehicle, or that your vehicle will have that condition. See your authorized Porsche Dealer for the latest information about whether a particular technical bulletin applies to your vehicle. Part numbers listed in these bulletins are for reference only. Always check with your authorized Porsche dealer to verify the current and correct part numbers. The work procedures updated electronically in the Porsche PIWIS diagnostic and testing device take precedence and, in the event of a discrepancy, the work procedures in the PIWIS Tester are the ones that must be followed.

© Porsche Cars North America, Inc.

Dealership	Service Manager	Shop Foreman	Service Technician				
Distribution							
Routing	Asst. Manager	Warranty Admin.	Service Technician				

Dr. Ing. h.c. F. Porsche AG is the owner of numerous trademarks, both registered and unregistered, including without limitation the Porsche Crest®, Porsche®, Boxster®, Carrera®, Cayenne®, Cayman®, Macan®, Panamera®, Speedster®, Spyder®, 918 Spyder®, Tiptronic®, VarioCam®, PCM®, PDK®, 911®, RS®, 4S®, FOUR, UNCOMPROMISED®, and the model numbers and the distinctive shapes of the Porsche automobiles such as, the federally registered 911 and Boxster automobiles. The third party trademarks contained herein are the properties of their respective owners. Porsche Cars North America, Inc. believes the specifications to be correct at the time of printing. Specifications, performance standards, standard equipment, options, and other elements shown are subject to change without notice. Some options may be unavailable when a car is built. Some vehicles may be shown with non-U.S. equipment. The information contained herein is for internal authorized Porsche dealer use only and cannot be copied or distributed. Porsche recommends seat belt usage and observance of traffic laws at all times.

Printed in the USA