

Repositioning the Rear Subframe to Facilitate Rear Chassis Alignment

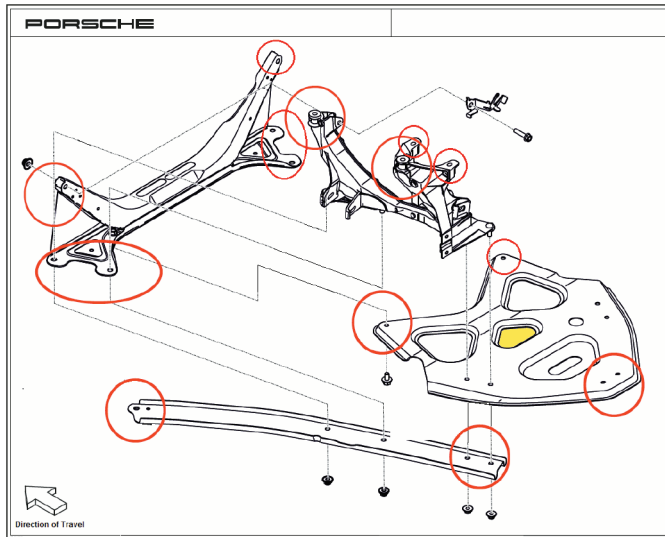
Binder – 4 – Chassis

Vehicle Type: **Cayman GT4 (981)**

Model Year: **2016**

Information: When performing an alignment it has been found that in some cases, it may not be possible to adjust the camber and toe angles to specification on the left or right side of the rear suspension. Therefore, it may be necessary to reposition the entire rear suspension subframe(s) or “rear axle carrier side section” (4238) with respect to the vehicle body.

- Work Procedure:
1. Support the gearbox with screw post stand (access area indicated in yellow).
 2. Loosen the screw connections indicated in the following illustration:



3. Adjust the rear suspension subframe(s) as necessary.
4. Tighten the screw connections to the specified torque and check the alignment.

Dealership	Service Manager _____	Shop Foreman _____	Service Technician _____
Distribution	Asst. Manager _____	Warranty Admin. _____	Service Technician _____
Routing			

Dr. Ing. h.c. F. Porsche AG is the owner of numerous trademarks, both registered and unregistered, including without limitation the Porsche Crest®, Porsche®, Boxster®, Carrera®, Cayenne®, Cayman®, Macan®, Panamera®, Speedster®, Spyder®, 918 Spyder®, Tiptronic®, VarioCam®, PCM®, PDK®, 911®, RS®, 4S®, FOUR, UNCOMPROMISED®, and the model numbers and the distinctive shapes of the Porsche automobiles such as, the federally registered 911 and Boxster automobiles. The third party trademarks contained herein are the properties of their respective owners. Porsche Cars North America, Inc. believes the specifications to be correct at the time of printing. Specifications, performance standards, standard equipment, options, and other elements shown are subject to change without notice. Some options may be unavailable when a car is built. Some vehicles may be shown with non-U.S. equipment. The information contained herein is for internal authorized Porsche dealer use only and cannot be copied or distributed. Porsche recommends seat belt usage and observance of traffic laws at all times.