



SERVICE INFORMATION BULLETIN

Subject: FLOORING ADHESIVE SEPARATION

Models Affected: ALL 2011 - 2016 MV-1 VEHICLES

BACKGROUND

Some vehicles have a section of the flooring separate and present a bulge in the front passenger side of the vehicle near the transmission tunnel.

WARRANTY

The provisions of the normal warranty policy apply.

TIME

The time required to repair the flooring is 0.7 hour. Use labor operation M161003

PROCEDURE

1. Remove the front and rear floor restraints and end caps located next to the transmission tunnel (See Figure 1).

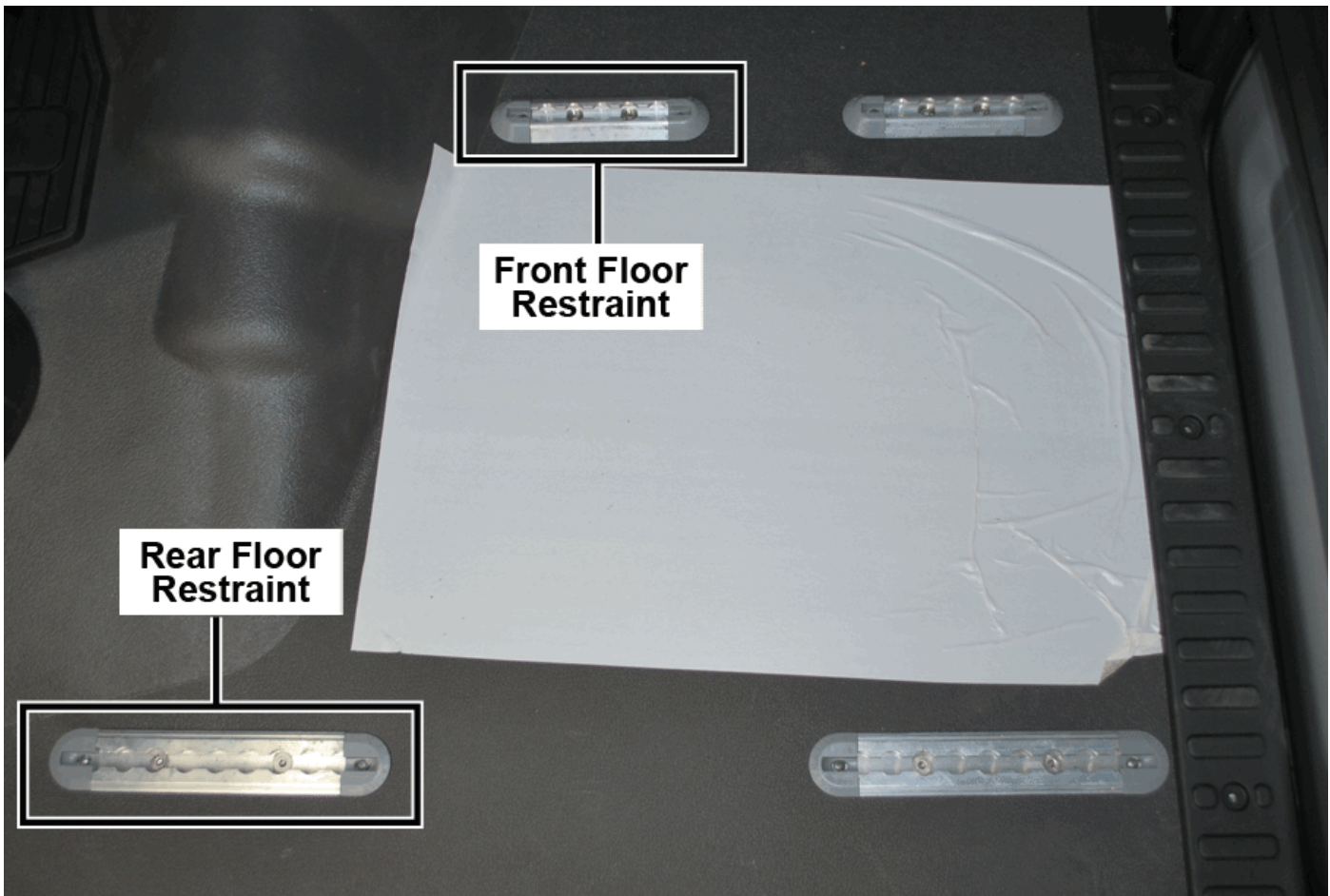


Figure 1: Floor Restraints

CAUTION: Do not lift the flooring anymore than necessary to prevent damaging it.

2. Raise the passenger side flooring just enough to insert a six inch piece of 2X4 (See Figure 2).

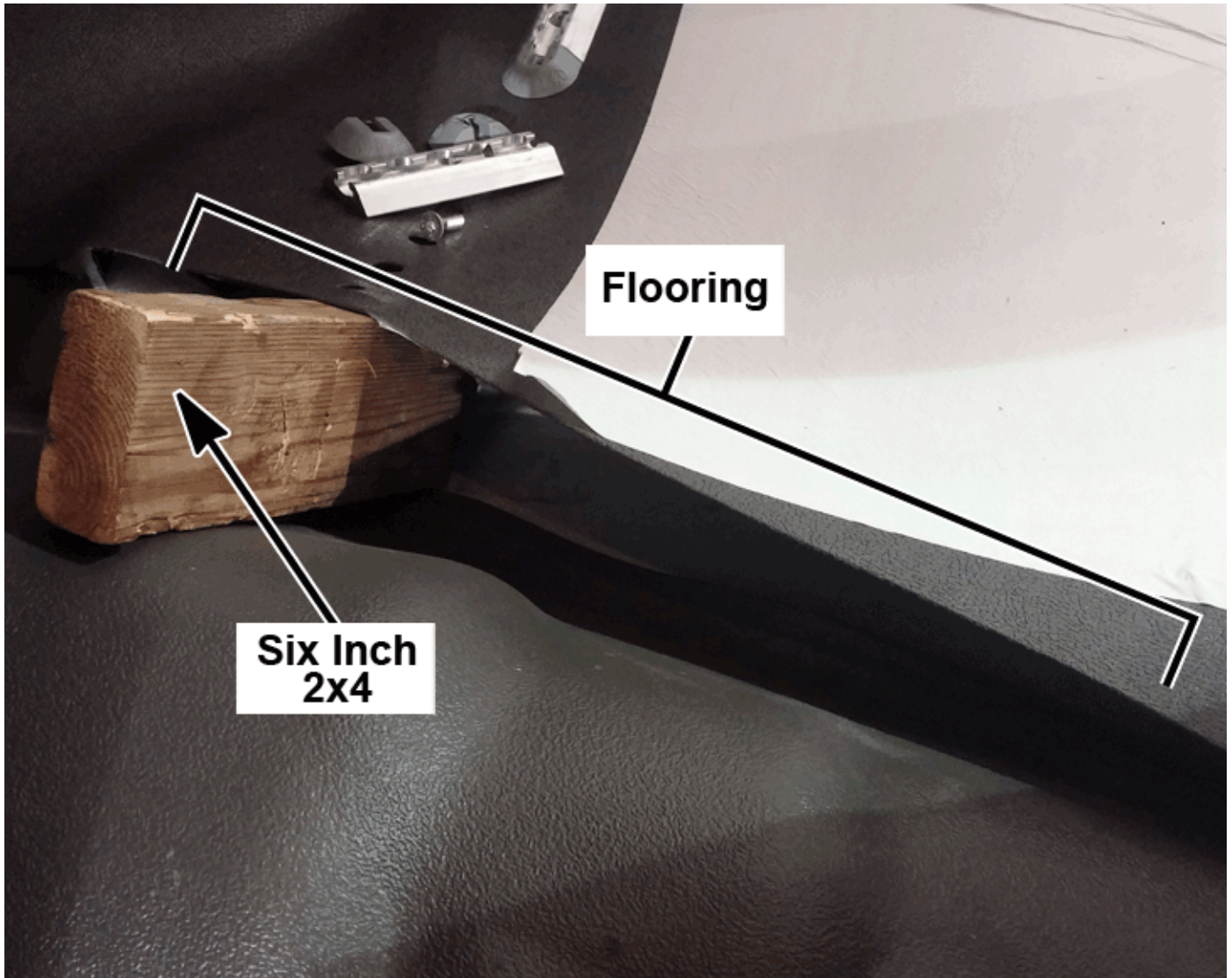


Figure 2: Raise the Flooring

CAUTION: DO NOT remove the factory installed adhesive from the bottom side of the flooring.

3. To ensure proper adhesion of the urethane applied in step 4, remove any debris or residue from the body and the mating section of the passenger side flooring within 2 inches (50mm) perpendicular to the drivers side flooring.

4. Apply 3M™ Fast Cure Auto Glass Urethane 08690 on the short floor rib and in 6 separate mounds approximately 1/2" high along the edge of the drivers side flooring (See Figures 3 & 4).

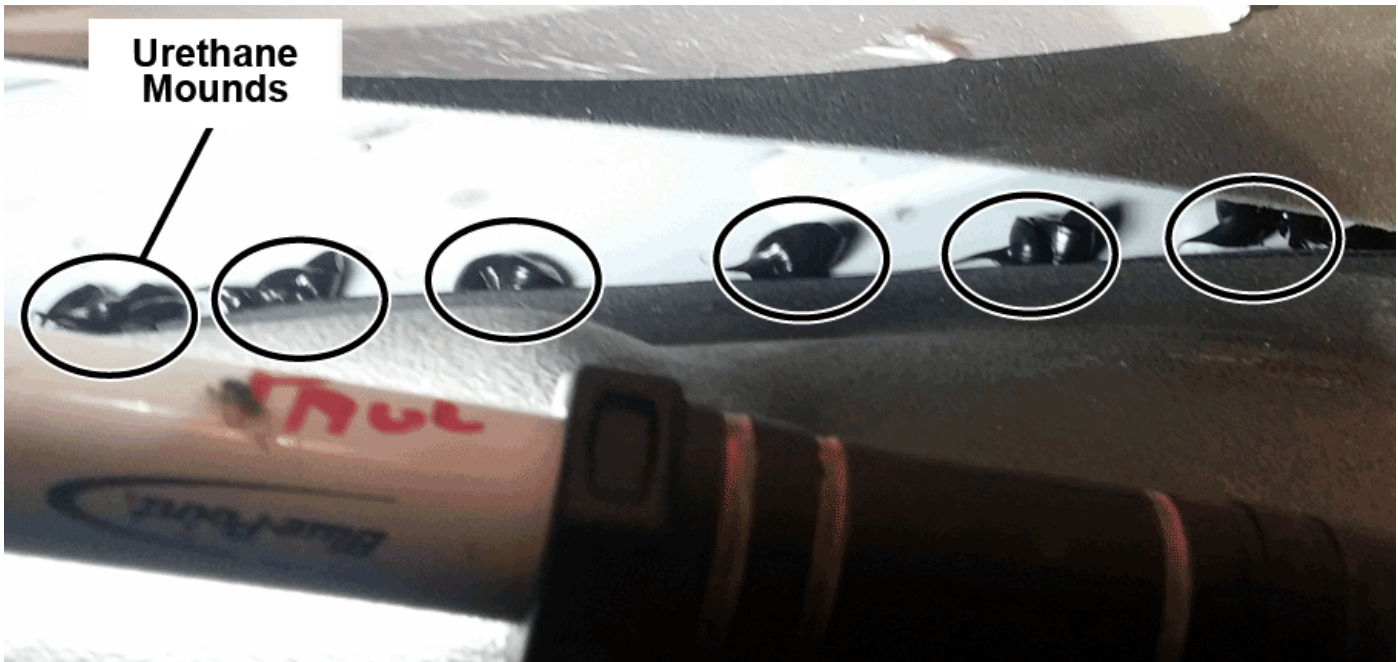


Figure 3: Apply Urethane

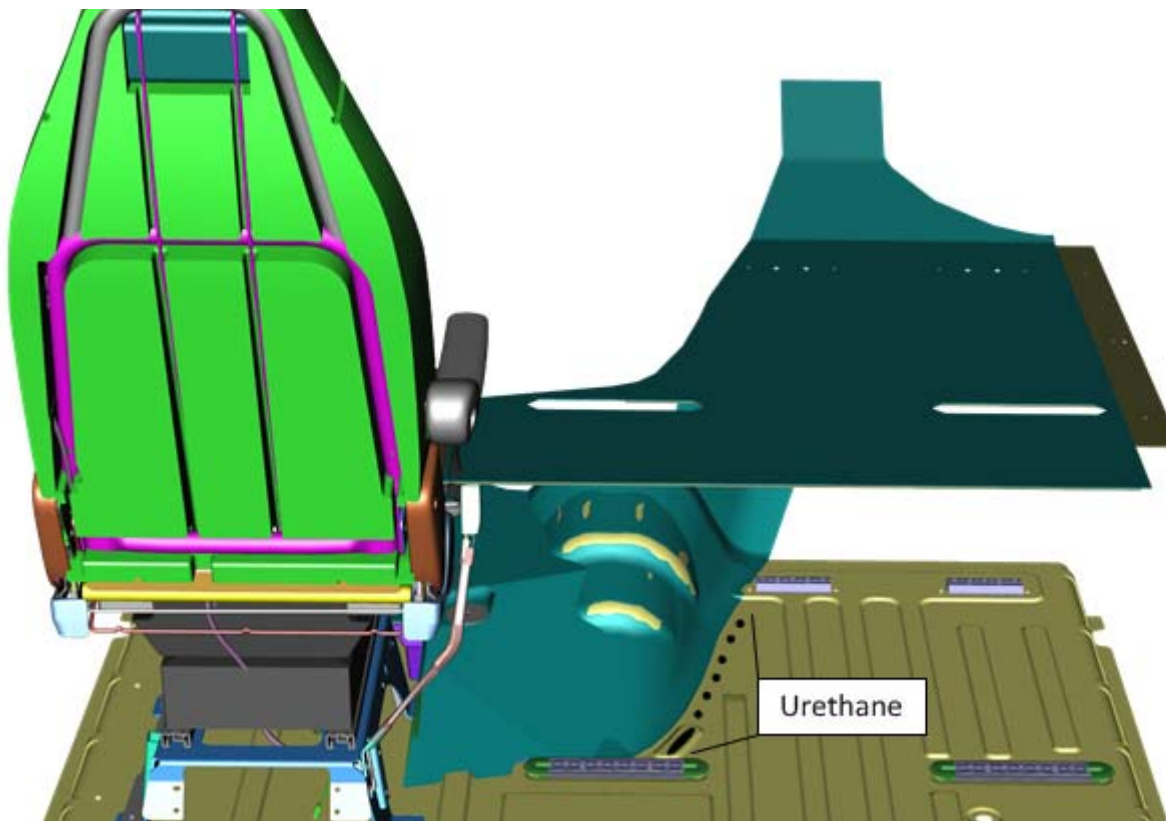


Figure 4: Apply Urethane

5. Remove the 2X4 and press the flooring into the urethane.
6. Install the front floor restraint and torque the 2 bolts to 26 Nm (19 lb-ft).
7. Install the end caps.
8. Apply approximately 30 pounds of weight on the floor directly above the location where the urethane was applied (See Figure 5).

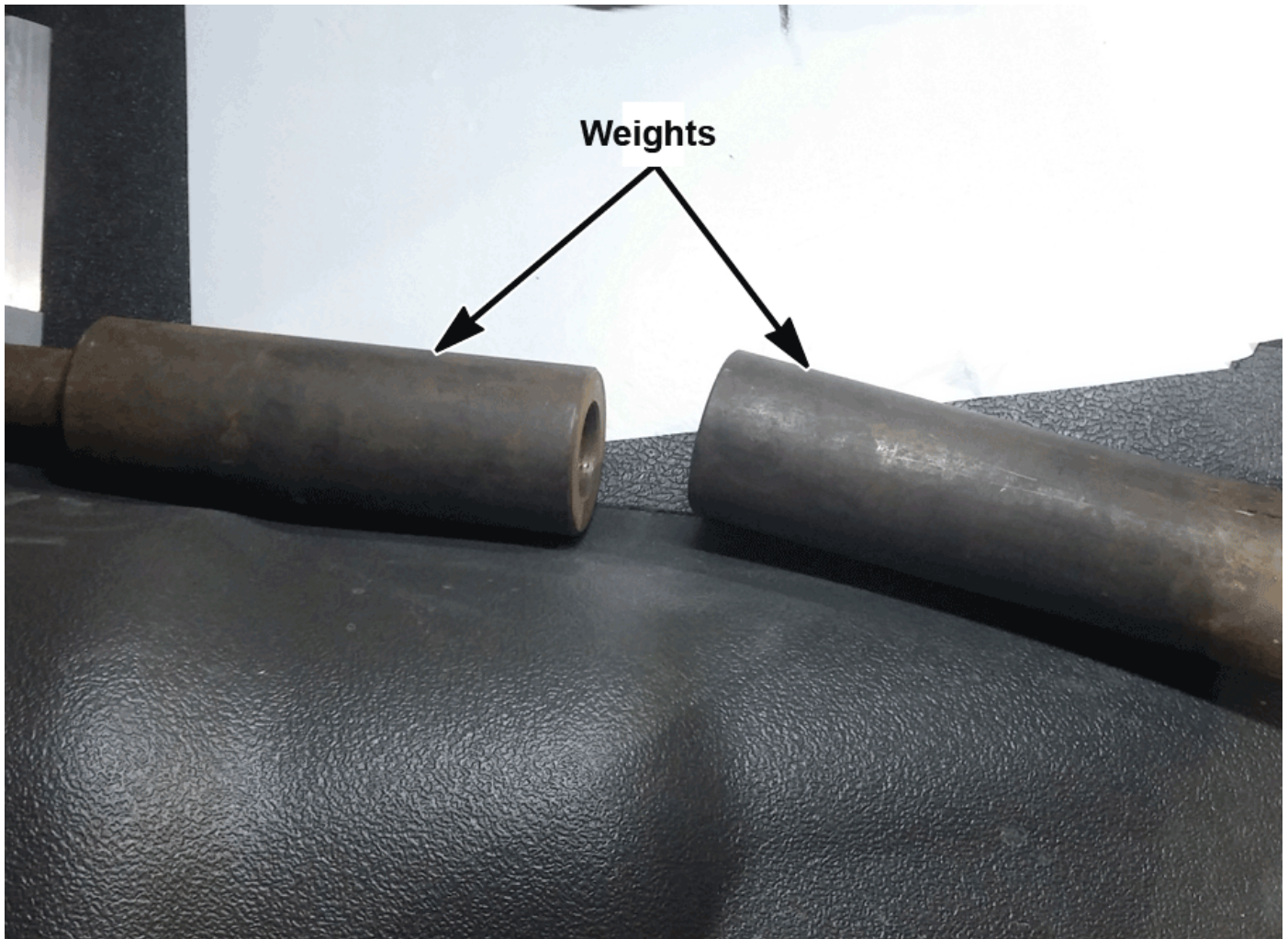


Figure 5: Apply Weight

9. Verify the rear floor restraint opening is not out of position by placing the restraint in the opening and checking the screw hole alignment (See Figure 6).

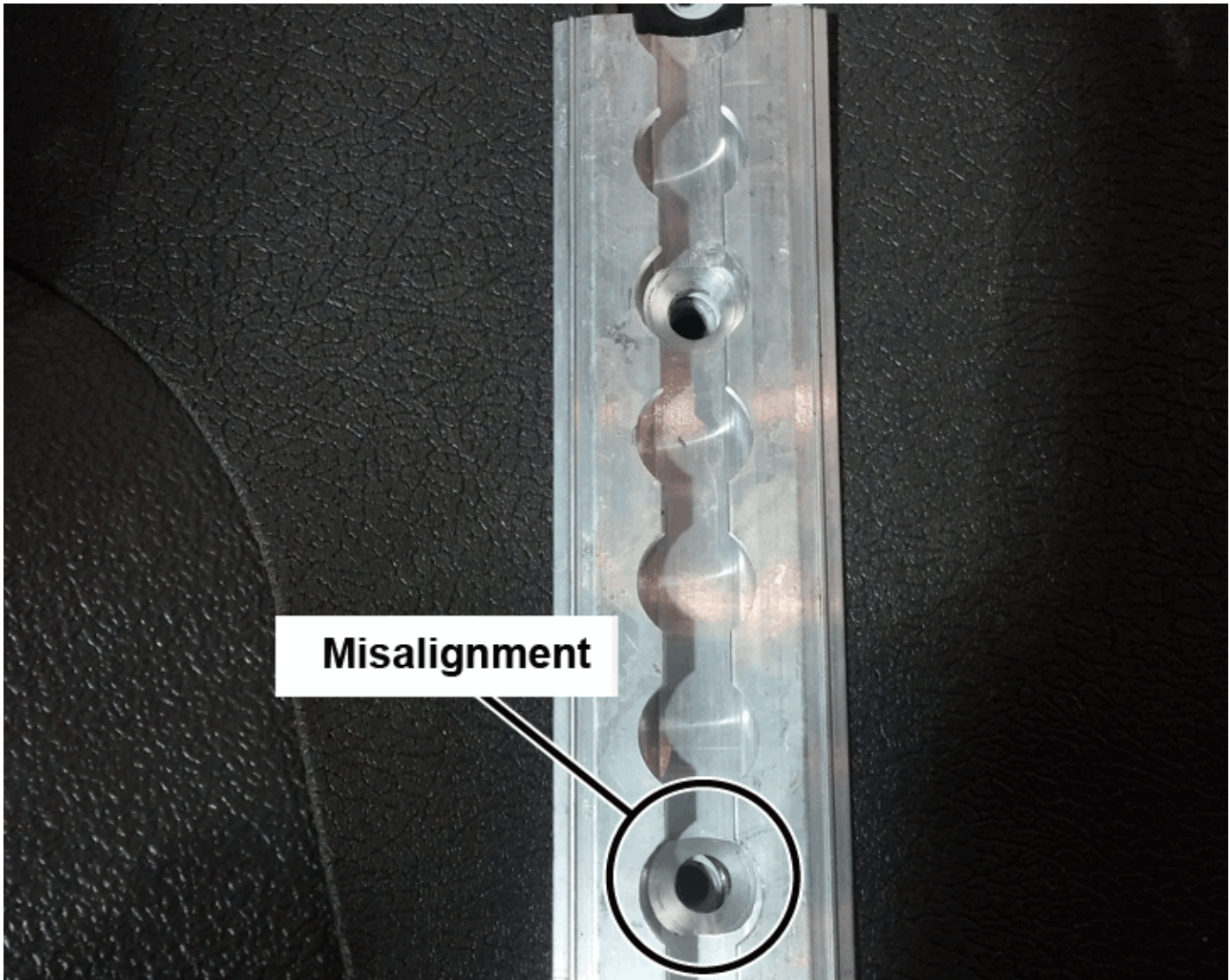


Figure 6: Screw Hole Alignment

10. If the restraint screws cannot be installed without forcing the restraint forward into the flooring, the flooring will need to be trimmed.

WARNING: DO NOT install the restraint with a misalignment or interference fit, it will force the flooring to separate again.

WARNING: DO NOT remove more material than necessary, to prevent creating a gap in front of the restraint.

- Using a razor type utility knife trim a small amount of flooring from the front side of the restraint opening until the screw holes line up (See Figure 7).

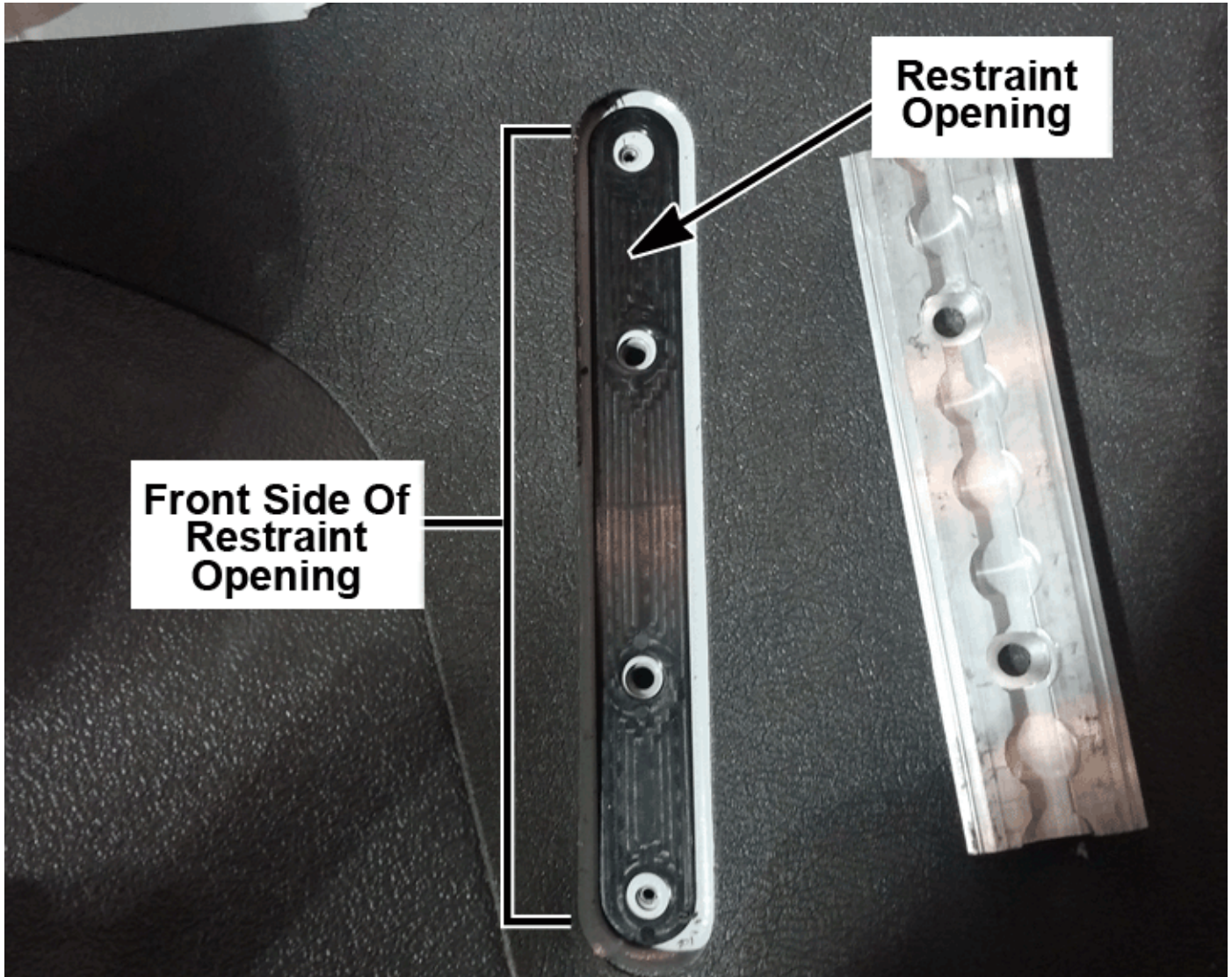


Figure 7: Restraint Opening

- Install the rear floor restraint and torque the 2 bolts to 26 Nm (19 lb-ft).
- Install the end caps.
- Allow the urethane to cure for 3 hours before removing the weights.