



ENTEGRA
COACH®

TECHNICAL SERVICE BULLETIN

TSB#: 16-027 Job Code: 9803312 Flat Rate: 2 hr

Date of Publication: August 2016

NOTE: This Technical Service Bulletin will be valid within (1) year from the original date of publication. REQUIRES PARTS ORDER.

ACTION REQUIRED:

Inspect air box for obstruction.
Insert screws around duck bill at air intake hose

MODELS / UNITS:

2016 Aspire	G1	3B	8051-8115	2016 Anthem	G1	4A	8051-8058
		3H	8051-8070			4B	8051-8189
		3M	8051-8055			4D	8052-8074
		3N	8051-8089			4H	8051-8075
		3P	8051-8056			4L	8051-8062
		3R	8051-8053			4N	8051-8109
		3S	8051-8059				
 2016 Cornerstone	 G1	6A	8051-8076				
		6B	8051-8141				
		6J	8051-8056				
		6K	8051-8080				

KIT CONTENTS

Note: Kit can only be ordered using the order form included with this bulletin.

- 8 Screws - #8 x 1-1/4" pan hd black
- 6" Pipe - ABS 3" dia. x 6" long

TOOLS/MATERIAL REQ.:

Screwgun with a long #2 square drive bit
Flat blade screwdriver
1/4" drive ratchet
7/16" deep well 1/4" drive socket
air saw or 3" hole saw
tube of black expanding foam
tube of black silicon adhesive sealant

1 Remove the tail lights to access the air box.

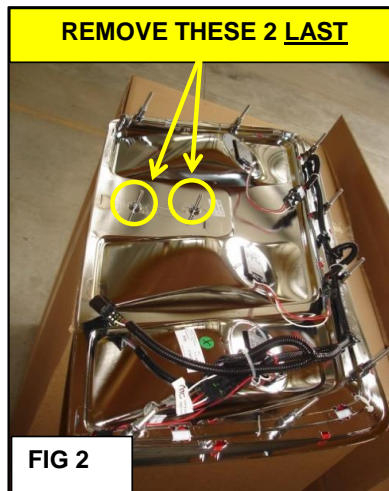
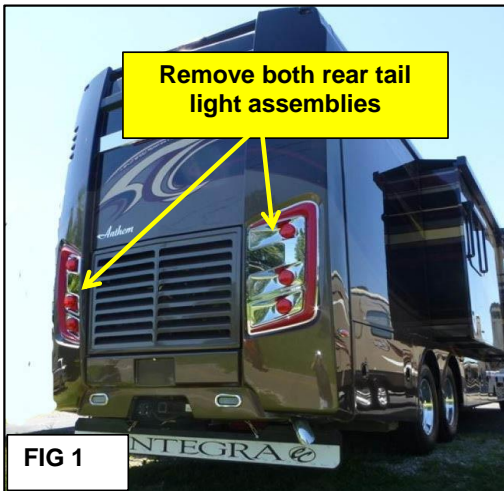
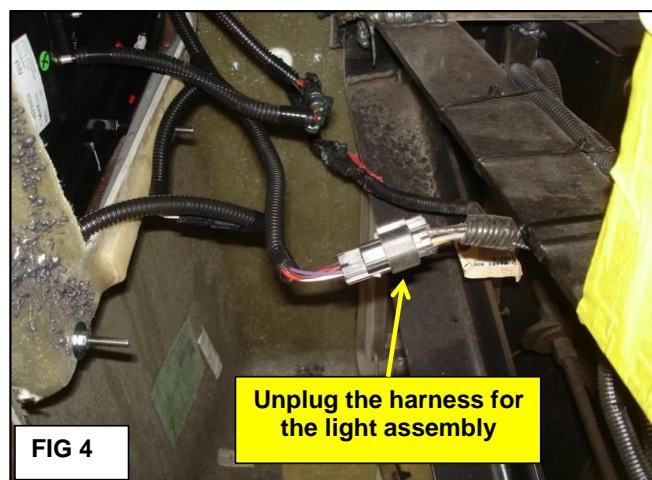
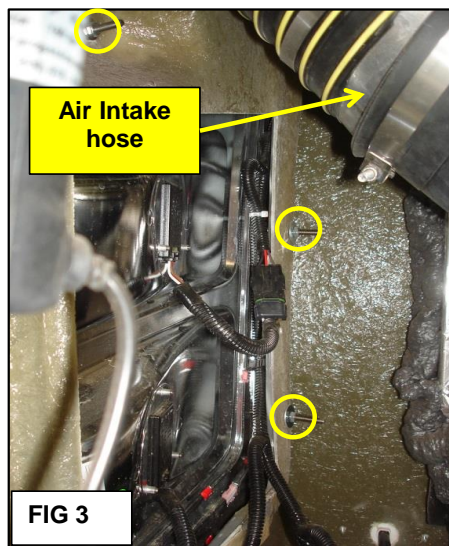


Fig 1: Remove both rear tail light assemblies. Make sure the engine is OFF and parking brake is set. Open the rear engine bay door and use the 7/16" deep well socket with the 1/4" drive ratchet. You must use the 1/4" drive ratchet as it is small enough to access areas where the nuts are located. Tail light nuts must be removed from the back side of each light assembly.

Fig 2: There are 10 nuts that must be removed. Each tail light assembly has 3 lights, the nuts located under the upper single light should be removed LAST.

CAUTION: WHEN THE LAST TWO NUTS ARE REMOVED, THE LIGHT ASSEMBLY WILL FALL IF NOT BEING HELD. PAINT WILL BE DAMAGED IF THE LIGHT ASSEMBLY FALLS. HOLD THE LIGHT WITH ONE HAND WHILE REMOVING THE NUTS, USE TAPE TO HOLD THE LIGHT, OR HAVE A SECOND PERSON HOLD THE LIGHT IN PLACE UNTIL IT IS LOOSE.



- 2 **Fig 3:** Shows a couple of the 10 nuts (circled) holding the light in place. **NOTE:** On driver side: one or two nuts will be located behind the air intake hose shown in the upper right corner of the photo.
- Fig 4:** Unplug the tail light assembly harness and the light can be removed from the back of the RV. Repeat this procedure for the tail light assembly on the passenger side.

3 Clear the Driver Side intake

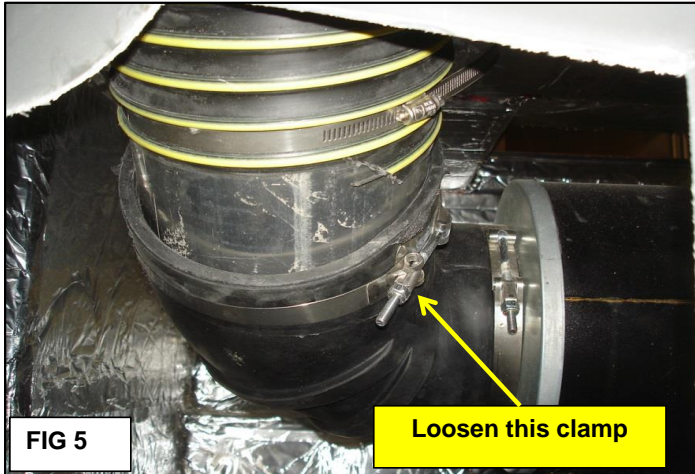


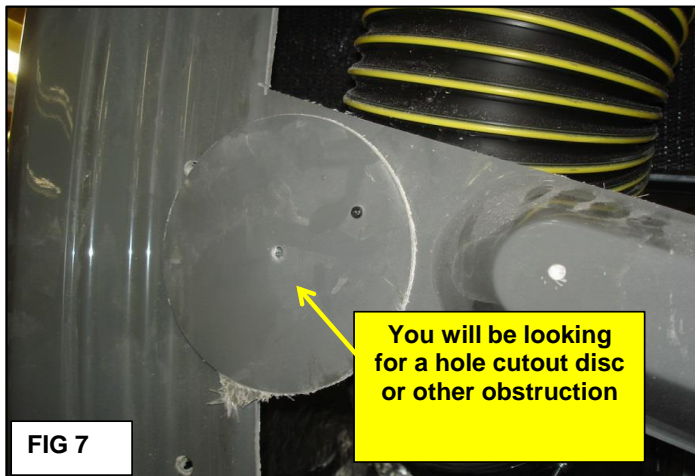
Fig 5: Loosen the clamp on the airbox elbow with the 7/16" ratchet and socket.

Fig 6: Take the hose out of the elbow. The hose fits VERY tight into the elbow and is not real flexible.

By using a flat blade screwdriver in the elbow GENTLY pry the hose out of the elbow.

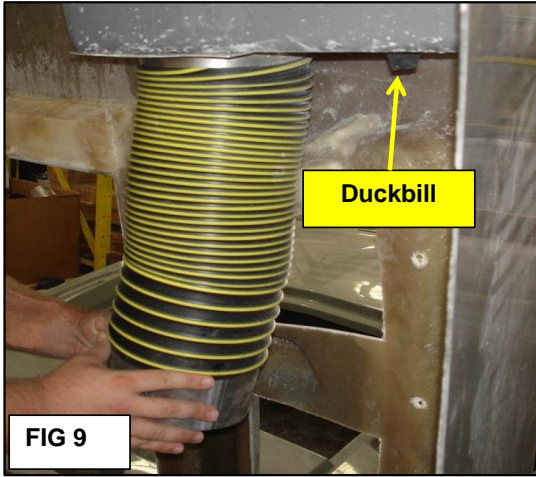
The hose will be down in the elbow approximately 2 to 2-1/2 inches.

When the hose is free from the elbow reach up inside the pipe, or send a camera up inside the pipe to look for an obstruction



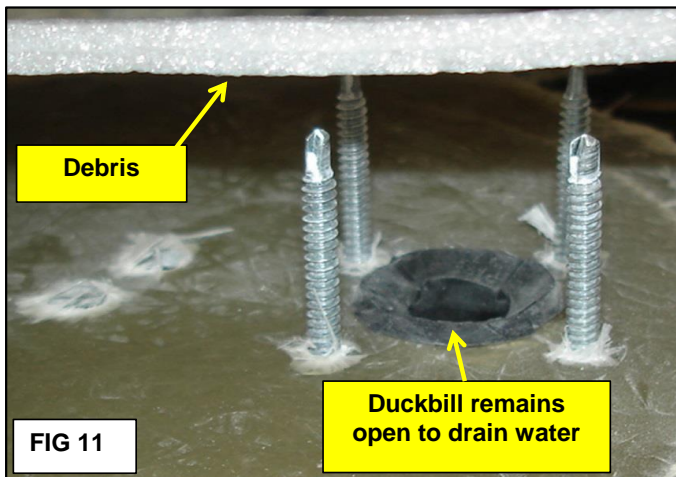
4 Fig 7: This large hole cutout disc may be loose inside the hose. If a blockage is found, remove it from the air intake hose.

Fig 8: When air intake hose is cleared of any obstruction, re-install the hose back into the elbow and tighten the clamp.



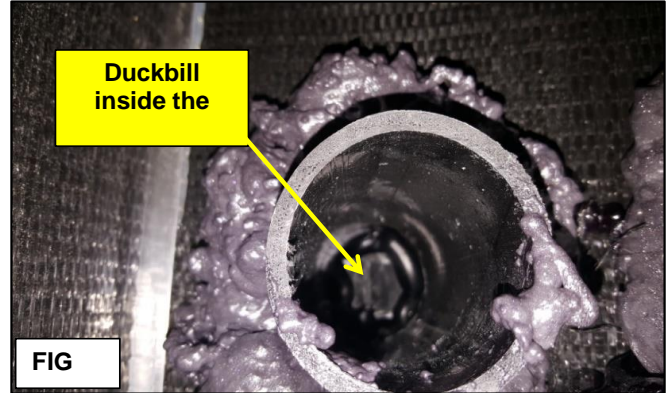
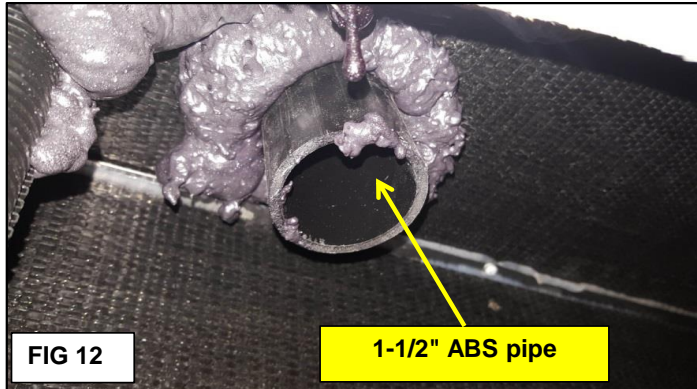
5 **Fig 9:** Locate the "duckbill" which is a rubber vent or drain to the **left** of the top of the air intake hose.
 (Figure 9 photo was taken before the rear cap was installed on the RV)
 Enter from the tail light opening and look up to the left of the intake hose.

Fig 10: Install the 4 screws from the parts kit around the duckbill vent as shown in this photo.



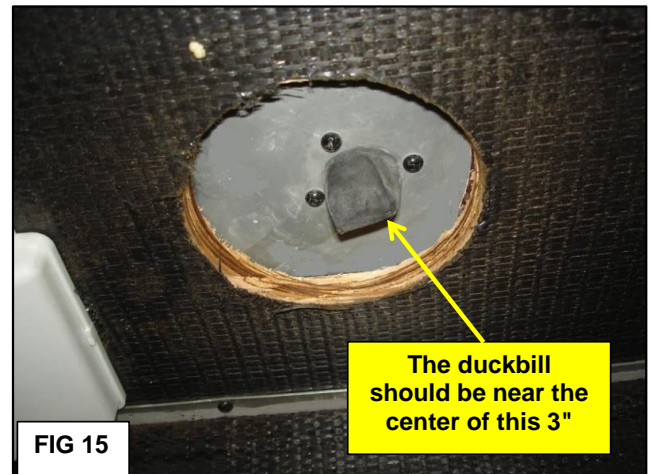
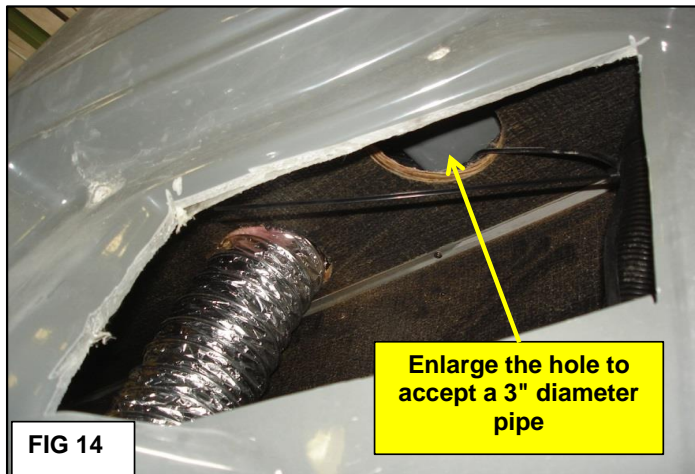
6 **Fig 11:** These screws will prevent any debris which may be in the area of the duckbill from blocking the opening.
 This picture shows how the screws would stop a piece of debris from covering the duckbill.
 This completes the driver side of the vehicle.

INSTRUCTIONS FOR THE DRAIN PIPE ON THE PASSENGER SIDE



7 **Fig 12:** Locate the small piece of 1-1/2" ABS pipe inside and at the top of the passenger side tail light opening.

Fig 13: The duckbill is attached to the fiberglass up inside the ABS pipe. (it is not attached to the pipe)
Remove the 1-1/2" pipe, it is held in place with expanding foam and silicon adhesive sealant.
Remove the expanding foam, and pull the pipe out.

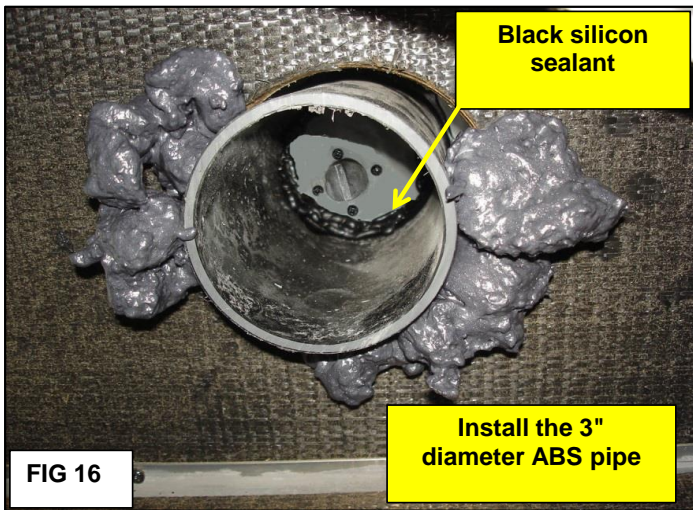


8 **Fig 14:** Enlarge the hole from 1-1/2 inches to 3 inches using either an air saw or a 3 inch hole saw.

CAUTION: When enlarging the hole be careful not to cut any wires in the vicinity.

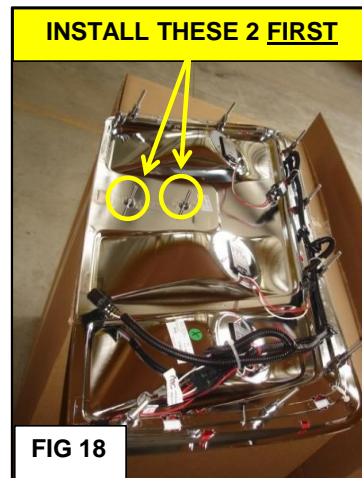
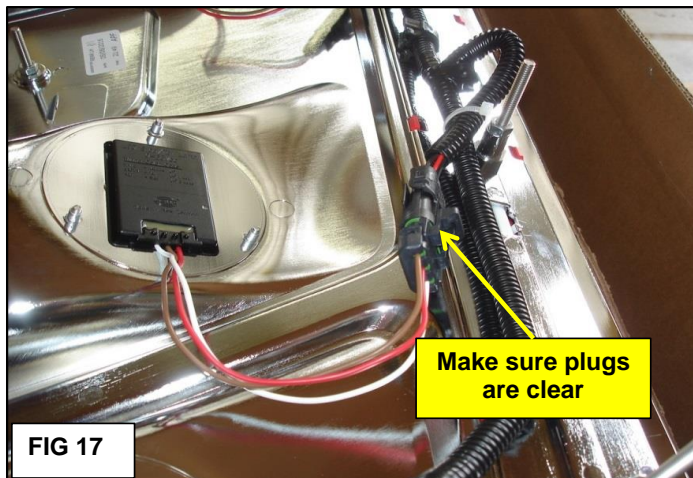
Fig 15: Install 4 screws around the duckbill similar to what was done on the driver side.

NOTE: The duckbill is actually farther away from this hole than shown in this photo.
A longer square drive bit for the screw gun may be necessary to reach up to the duckbill.



- 9 **Fig 16:** Install the 3" ABS pipe in the hole. Apply black silicon adhesive sealant on one end of the pipe. Push the pipe up in the hole to seal it around the duckbill and the screws. Apply black expanding foam around the outside of the pipe to seal it into the 3" hole.

WARNING:
THE ABS PIPE MUST BE SEALED TIGHT TO KEEP ENGINE EXHAUST FUMES OUT OF THE COACH



- 10 Re-install the tail light assemblies.

Fig 17: As you insert the tail light assemblies, make sure the plugs (shown) are not pinched between the fiberglass cap and the light assembly.

Fig 18: When re-installing the nuts on the tail light assemblies, start with the two nuts located under the single upper light. These would be the last two nuts removed when you took the tail light assembly off the coach. Make sure to hold the light in place so no paint is damaged on the outside of the RV.

- 11 Test the tail lights for proper operation after re-assembly (brakes, turn and running lights).