

February 29<sup>th</sup> 2016

Mr Larry Long  
Associate Administrator for Enforcement,  
National Highway Traffic Safety Administration (NHTSA)  
1200 New Jersey Avenue S.E.  
Washington, D.C. 20590  
e-mail address: tsb@dot.gov

Mr Long:

Per Chapter V – National Highway Traffic Safety Administration, Department of Transportation, Part 579 - Reporting of information and communications about potential defect, under 579.5 Notices, bulletins, customer satisfaction campaigns, consumer advisories and other communications, Prevost is submitting an electronic copy of documentations sent to our customers during **the month of February 2016.**

**a. Vehicle Brand: Prevost (EWR# 000650)**

WB15-55	Radius Rod Support and I-Beam Axle Gap Inspection
WB16-04	Steering Damper Securement
MI16-05	Bendix M-32QR ABS Modulator Valve Replaced By New
MI16-12	Glued Fixed Thermos Window Pane - Installation/Gluing Procedure
MI16-16	Volvo D13 Engine –Starter Removal and Installation
SP15-304E	Alternator Replacement with Bosch HD10plbh 150a
SP16-301	Variable Geometry Turbocharger (SRA) - Actuator Replacement
SP16-302	Pressure Cap Replacement
SP16-303	Wheelchair Lift Cable Wear
IS-14154	X3 New Fuel Tank Installation: Support Beam Modification Instructions
IS-16900B	Driver's Partition and Door Installation

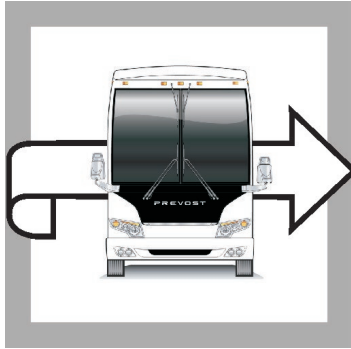
**Vehicle Brand: Volvo Bus (EWR# 000799)**

N/A

Do not hesitate to contact me should you have questions or comments.  
Best Regards,



Dominique Gagnon  
Technical Publication Supervisor




**PREVOST**

**WARRANTY  
BULLETIN**

**WB15-55**

DATE :	FEBRUARY 2016	SECTION :	10 - Front axle
EXPIRATION:	FEBRUARY 2018		
SUBJECT :	RADIUS ROD SUPPORT AND I-BEAM AXLE GAP INSPECTION		

**APPLICATION**

<b>NOTICE TO SERVICE CENTERS</b>	
<i>Verify vehicle eligibility by checking warranty bulletin status with SAP or via ONLINE WARRANTY SYSTEM available on Service / Warranty tab of Prevost website.</i>	
Model	VIN 
H3-45 coaches Model Year : 2014 - 2015	The following vehicle: 2PCH33490 <u>EC712495</u> And from 2PCH3349X <u>EC712505</u> up to 2PCH33498 <u>FC713024</u> incl.
X3-45 coaches Model Year : 2014 - 2016	The following vehicles : 2PCG33493 <u>EC735538</u> , 2PCG33494 <u>GC735910</u> , 2PCG33499 <u>GC735921</u> , 2PCG33494 <u>GC735924</u> And from 2PCG33498 <u>EC735597</u> up to 2PCG33493 <u>GC735882</u> incl.
This bulletin does not necessarily apply to all the above-mentioned vehicles, some vehicles may have been modified before delivery. The owners of the vehicles affected by this bulletin will be advised by a letter indicating the Vehicle Identification Number (VIN) of each vehicle concerned.	

**DESCRIPTION**

On the vehicles affected by this bulletin, inspect the gap between the radius rod support and the axle. A deviation in the axle beam envelope can lead to interference between the two parts. In most cases, slightly moving the support will resolve the issue. Exceptionally, the axle may need to be replaced.

**MATERIAL**

Order the following kit, one per side. Up to two kits may be required.

Part No.	Description	Qty
5002004	SET SCREW M16x 2.0 x 40mm DIN 916.	1

Other parts that may be required:

Part No.	Description	Qty
682175	Rubberized undercoating 3M	1 can
680038	LOCTITE #243 / BLUE / 50ml	A/R

**NOTE**

Material can be obtained through regular channels.

## PROCEDURE



### DANGER

Park vehicle safely, apply parking brake, stop engine. Prior to working on the vehicle, set the ignition switch to the OFF position and trip the main circuit breakers equipped with a trip button. On the Commuter type vehicles, set the battery master switch (master cut-out) to the OFF position.

## STEP A PRELIMINARY INSPECTION

1. Raise the vehicle and find the radius rod supports on the front axle.



Figure 1

2. On the left and right Radius rod supports

Attempt to insert a shim **12.7 mm** (1/2 in) thick at rear of the axle above the screw between the radial rod support, as shown. (Fig 2.)

**If the shim cannot be inserted** on the left and right support, axle is compliant. *END OF BULLETIN.*

**If the shim can be inserted**, on either one of the supports carry on with next steps.

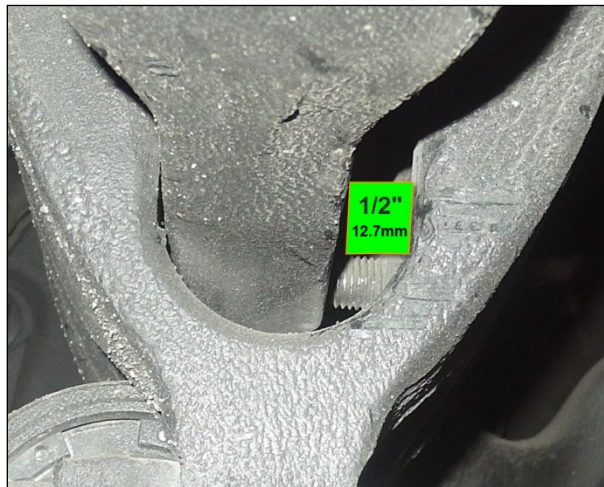


Figure 2

3. Inspect the gap between the axle and the radius rod support on the front.(Fig. 3)
4. After removing debris and protective coating, there must not be contact in zone highlighted in fig. 3.
5. Use a feeler gage set to make sure there is a gap. (Fig.3)

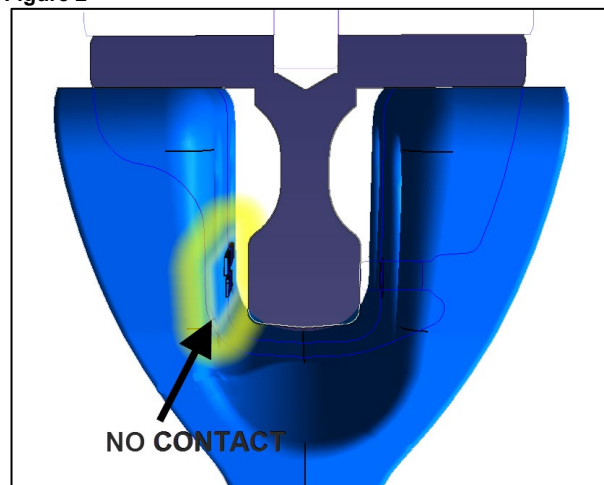


Figure 3

6. If there is contact, skip to **step B.**
7. If there is no contact, remove the set screw in the middle of the support. (A, fig. 4)
8. Replace by a longer set screw, **#5002004** and apply loctite compound **#680038.**
9. Hand-tighten the set screw.
10. Apply a protective coating on affected area. END OF BULLETIN.

## STEP B SUPPORT POSITION ADJUSTMENT.

1. Using appropriate protection equipment, clean the end of the screw threads with solvent and brush to remove the protective coating. (B, fig. 4)
2. Loosen by approximately one turn the bracket bolts (4x) (B, fig. 4)
3. Remove the set screw at the center behind the support. (A, fig. 4)

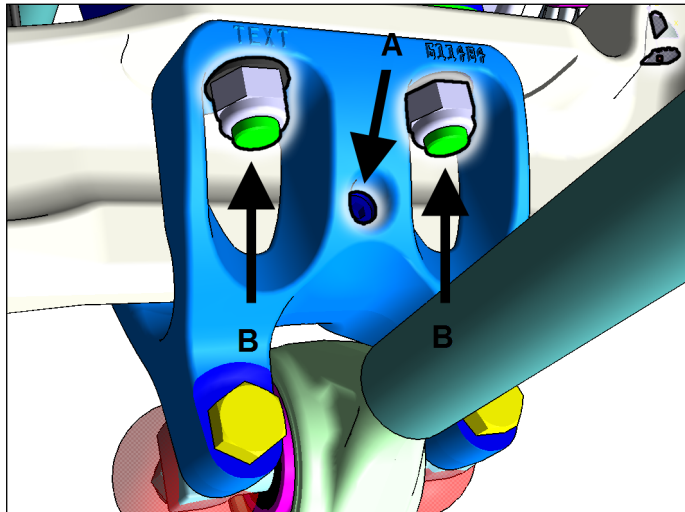


Figure 4

Do not place the support in overhang condition using the set screw as a means to create a gap. (Fig.5)

4. Move the support to try to create a gap. (fig. 3) **Keep the support flat on the axle.**
5. Tighten the bolts and inspect the gap between axle and support.

Use a feeler gage set to confirm there is a gap everywhere. (Fig.3)

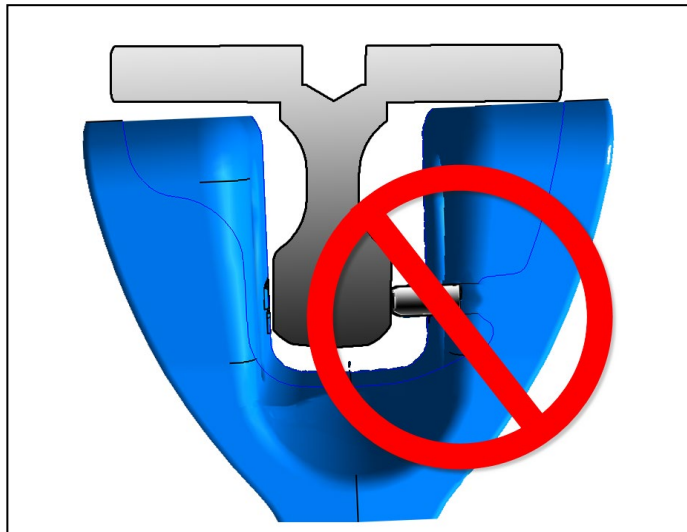


Figure 5

6. *If there is still contact after moving the support.*

- 6.1. Contact your nearest Prevest Service Center or your Regional Service Manager to plan an axle replacement. Refer to bulletin number WB15-55.
- 6.2. Tighten bolts to **255 lbf-ft**, qty 4
- 6.3. Replace set screw by a longer screw **#5002004** with loctite **#680038**.
- 6.4. Tighten set screw making sure it bears fully on the axle.
- 6.5. Apply underbody protection **#682175** on all affected hardware. END OF BULLETIN.

7. *If there is no contact after :*

- 7.1. Tighten bolts to **255 lbf-ft**, qty 4
- 7.2. Replace set screw by a longer screw **#5002004** with loctite **#680038**.
- 7.3. Tighten set screw making sure it bears fully on the axle.
- 7.4. Apply underbody protection **#682175** on all affected hardware.



Figure 6 Right

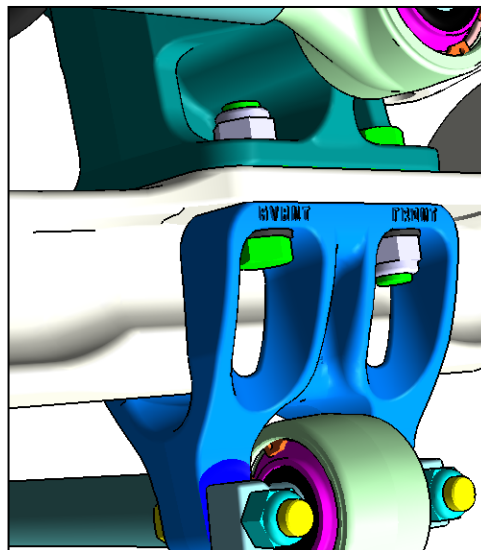


Figure 7 Left (Note different hardware arrangement)

## PARTS / WASTE DISPOSAL

DO NOT RETURN THE REPLACED PARTS. Discard waste according to applicable environmental regulations (Municipal/State[Prov.]/ Federal)

## WARRANTY

This modification is covered by Prevest's normal warranty. We will reimburse you the parts and forty five minutes (45 min) of labor **for inspection only (STEP A)** OR an hour fifteen minutes (1h 15) of labor plus parts for the **complete procedure (STEPS A & B)**.

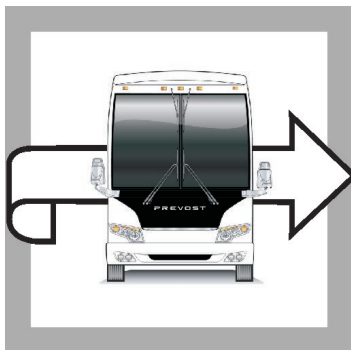
Should a *front axle replacement* be required, additional costs will be reimbursed under warranty. Please submit claim via our Online Warranty System, available at [www.prevestcar.com](http://www.prevestcar.com) (under Service \ Warranty section). Use Claim Type: "Bulletin/Recall" and select "Warranty Bulletin WB15-55".

## OTHER

VBC Bulletin	N/A
Fail Code	10.01
Defect Code	09
Syst. Cond	B
Causal Part	612386

Access all our Service Bulletins on  
<https://secureus5.volvo.com/technicalpublications/en/pub.asp>  
or scan the QR-Code with your smart phone.  
E-mail us at **technicalpublications\_prev@volvo.com** and type  
"ADD" in the subject to receive our warranty bulletins by e-mail.





# PREVOST

## WARRANTY BULLETIN

**WB16-04**

DATE :	FEBRUARY 2016	SECTION :	14 - Steering
EXPIRATION:	FEBRUARY 2018		
SUBJECT :	STEERING DAMPER SECUREMENT		

### APPLICATION

<b>NOTICE TO SERVICE CENTERS</b>	
<i>Verify vehicle eligibility by checking warranty bulletin status with <b>SAP</b> or via <b>ONLINE WARRANTY SYSTEM</b> available on Service / Warranty tab of Prevost website.</i>	
Model	VIN
H3-41, H3-45 coaches Model Year : 2015- 2016	From 2PCH33498 <u>FC712763</u> up to 2PCH33492 <u>GC713084</u> incl.
X3-45 coaches Model Year : 2015 - 2016	From 2PCG33490 <u>FC735787</u> up to 2PCG33493 <u>GC735932</u> incl.
<p><b>This bulletin does not necessarily apply to all the above-mentioned vehicles, some vehicles may have been modified before delivery. The owners of the vehicles affected by this bulletin will be advised by a letter indicating the Vehicle Identification Number (VIN) of each vehicle concerned.</b></p>	

### DESCRIPTION

On the vehicles affected by this bulletin the steering damping cylinder rod end spherical bearing may be loose in its housing. Replace as required and secure the steering damper spherical bearing with the provided hardware.

### MATERIAL

Order kit **WB16-04** which includes the following parts:

Part No.	Description	Qty
5001152	WASHER CONVEX 21.0x50.0x4.5 ZP	1
500146	SCREW CAP HEX 3/4-16x4 G5 N500	1
500251	NUT HEX NYRT 3/4-16 Z050	1

Other parts that may be required:

Part No.	Description	Qty
660884	ROD END	1

**NOTE**

Material can be obtained through regular channels.

**PROCEDURE**



**DANGER**

Park vehicle safely, apply parking brake, stop engine. Prior to working on the vehicle, set the ignition switch to the OFF position and trip the main circuit breakers equipped with a trip button. On the Commuter type vehicles, set the battery master switch (master cut-out) to the OFF position.

1. Lift vehicle.
2. On front axle the left wheel, locate the steering damper spherical end.(Fig. 1)
3. Make sure there is no vertical play. (Fig. 1)
4. If the spherical bearing moves, replace by a new **660884**.

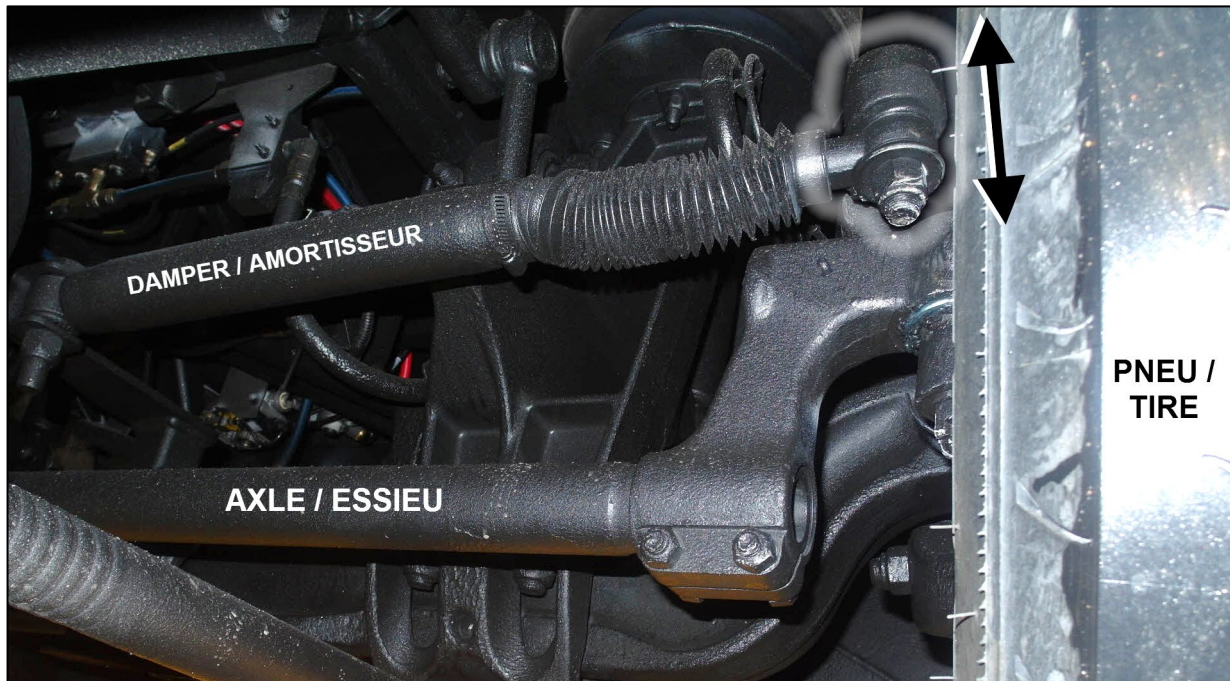


Figure 1

5. Add a washer under the seal é.  
Note washer orientation (fig. 2)  
**5001152** qty 1

Replace le bolt and nut :  
**500146** qty 1  
**500251** qty 1

Tighten to **110** lbf-ft.

Apply corrosion inhibitor on the new parts.

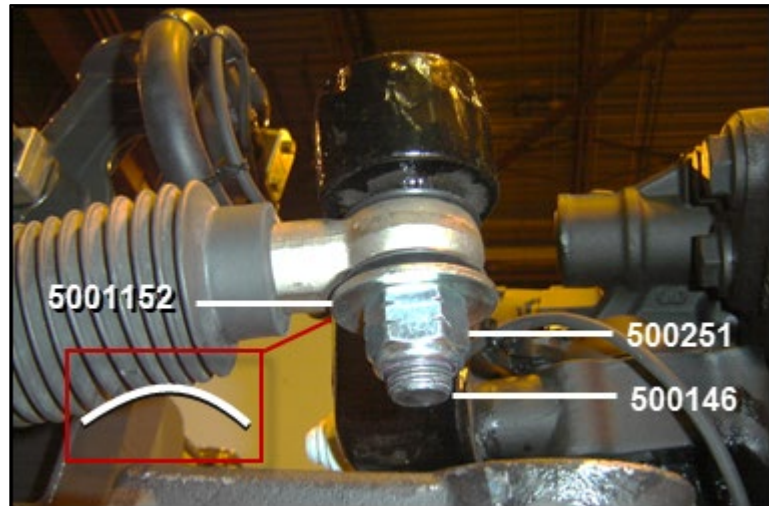


Figure 2

## PARTS / WASTE DISPOSAL

DO NOT RETURN THE REPLACED PARTS. Discard waste according to applicable environmental regulations (Municipal/State[Prov.]/ Federal)

## WARRANTY

This modification is covered by Prevo's normal warranty. We will reimburse you the parts and half an hour (0.5h) of labor upon receipt of a warranty claim. Please submit claim via our Online Warranty System, available at [www.prevo.com](http://www.prevo.com) (under Service \ Warranty section). Use Claim Type: "Bulletin/Recall" and select "Warranty Bulletin WB16-04".

## OTHER

VBC Bulletin	N/A
Fail Code	14.09
Defect Code	09
Syst. Cond	B
Causal Part	660979

Access all our Service Bulletins on  
<https://secureus5.volvocars.com/technicalpublications/en/pub.asp>

or scan the QR-Code with your smart phone.

E-mail us at [technicalpublications\\_prev@volvo.com](mailto:technicalpublications_prev@volvo.com) and type "ADD" in the subject to receive our warranty bulletins by e-mail.

