

FLA COE
FLB COE
FLD Conventional
Business Class
FLC 112 Conventional

Century Class Conventional
Argosy COE
Cargo
Columbia

122SD and Coronado
> Business Class M2
Cascadia
> 108SD/114SD

**Freightliner
Service Bulletin**

General Information

The following recommendations apply to vehicles used in dusty environments:

- For 114SD vehicles equipped with either a 03-38644-000 or 03-38644-001 air cleaner, replace the air cleaner. See [Table 1](#).
- For certain 114SD vehicles, replace the metal safety screen with a pleated safety element. See [Table 2](#).
- For 108SD, 114SD, M2 106, and M2 112 vehicles with air ducts specified in [Table 3](#), install an additional seal.

These modifications will improve the sealing quality of the air cleaner and help prevent dust from entering the engine. Detailed information is provided below.

Parts

NOTE: Part numbers are listed in PartsPro. See module 190 for air cleaners and module 189 for air ducts.

Part Number	Description
03-42321-001	Air Cleaner
NOTE: This air cleaner is for 114SD vehicles that are equipped with either air cleaner 03-38644-000 or 03-38644-001.	

Table 1, Air Cleaner (for 114SD vehicles)

Part Number	Description
DN P547520	Pleated Safety Element
NOTE: The pleated safety element is part of air cleaner 03-42321-001 (see Table 1).	

Table 2, Pleated Safety Element (for 114SD vehicles)

Part Number	Description
03-35087-002	Air Intake Seal
NOTE: This seal applies to 108SD, 114SD, and M2 106 and 112 vehicles equipped with one of the following air ducts:	
<ul style="list-style-type: none"> • 03-37483-000 • 03-37486-000 • 03-37520-000 	<ul style="list-style-type: none"> • 03-37521-000 • 03-38645-000
	<ul style="list-style-type: none"> • 03-39069-000 • 03-39070-000

Table 3, Air Intake Seal (108SD, 114SD, and M2 vehicles)

Air Cleaner Replacement (114SD Vehicles Only)

For 114SD vehicles equipped with either air cleaner 03-38644-000 or 03-38644-001, replace the air cleaner with a 03-42321-001 unit, as follows.

1. Park the vehicle on a level surface, shut down the engine, and set the parking brake. Chock the tires.
2. Loosen the clamps at the air cleaner assembly and turbocharger, and remove the air intake duct. See [Fig. 1](#).

Freightliner Service Bulletin

FLA COE
FLB COE
FLD Conventional
Business Class
FLC 112 Conventional

Century Class Conventional
Argosy COE
Cargo
Columbia

122SD and Coronado
> Business Class M2
Cascadia
> 108SD/114SD

3. Remove the air cleaner assembly and mounting bracket (together) from the vehicle.
4. Remove the air cleaner assembly from the mounting bracket.

IMPORTANT: See [Table 3](#) to determine if a new seal is needed. To install a new seal, use the air intake seal installation procedure provided in this bulletin.

5. Install a new air cleaner assembly on the mounting bracket, and tighten the fasteners 11 to 13 lbf-ft (15 to 18 N·m).
6. Install the air cleaner assembly and mounting bracket together on the vehicle, and tighten the fasteners 11 to 13 lbf-ft (15 to 18 N·m).
7. Wipe clean the inside and outside of the duct, and install it on the vehicle. Tighten the clamp at the turbocharger 90 lbf-in (1020 N·cm) and the clamp at the air cleaner 40 lbf-in (450 N·cm).

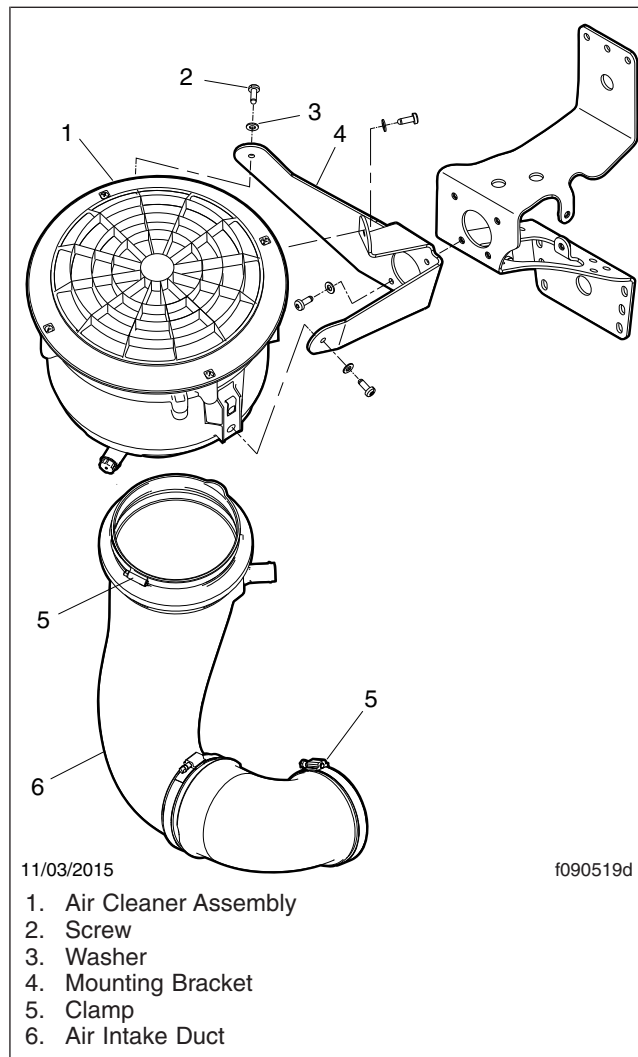


Fig. 1, Air Cleaner Assembly Installation

FLA COE
FLB COE
FLD Conventional
Business Class
FLC 112 Conventional

Century Class Conventional
Argosy COE
Cargo
Columbia

122SD and Coronado
> Business Class M2
Cascadia
> 108SD/114SD

Freightliner
Service Bulletin

Safety Element Replacement (114SD Vehicles Only)

For 114SD vehicles, replace the metal safety screen with a pleated safety element (see [Table 2](#)), as follows.

NOTE: Vehicles equipped with air cleaner 03-42321-001 do not need to have the safety element replaced (it is included in air cleaner 03-42321-001).

1. Park the vehicle on a level surface, shut down the engine, and set the parking brake. Chock the tires.
2. Loosen the clamps at the air cleaner assembly and turbocharger, and remove the air intake duct. See [Fig.1](#).
3. Remove the primary air cleaner element from the air cleaner housing. See [Fig. 2](#).

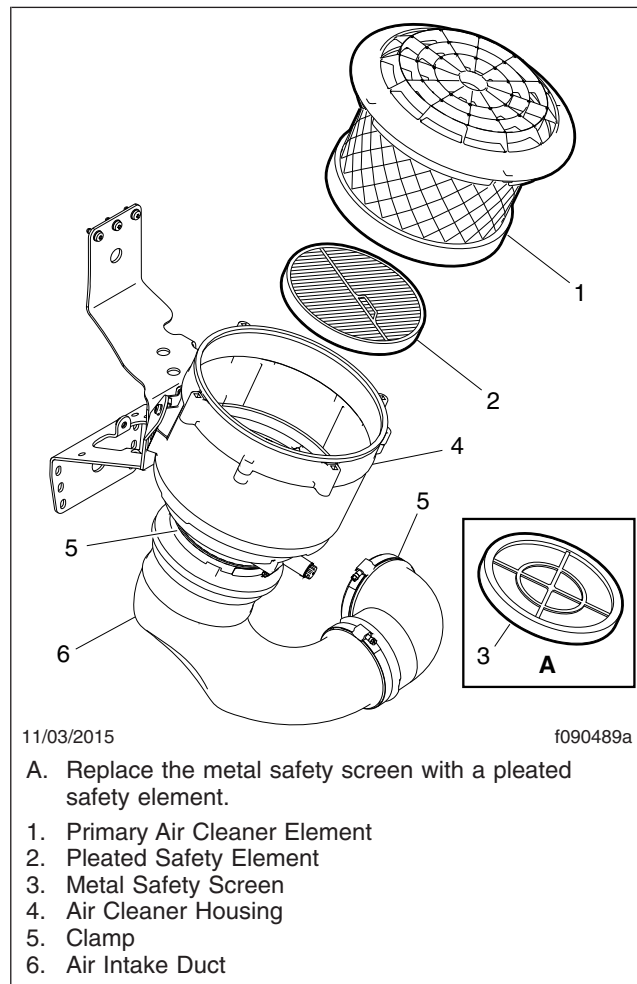


Fig. 2, Replacing the Metal Screen with a Safety Element

4. Remove the metal safety screen from the air cleaner housing.
5. Clean the housing surface.

Freightliner
Service BulletinFLA COE
FLB COE
FLD Conventional
Business Class
FLC 112 ConventionalCentury Class Conventional
Argosy COE
Cargo
Columbia122SD and Coronado
> Business Class M2
Cascadia
> 108SD/114SD

6. Install a new pleated safety element in the air cleaner housing. See [Table 2](#) and [Fig. 2](#).

NOTE: The pleated safety element should be changed each time the primary filter element is changed. See the vehicle workshop manual for instructions.

7. Install the filter element and tighten the capscrews 25 to 35 lbf-in (285 to 395 N-cm).

IMPORTANT: See [Table 3](#) to determine if a new seal is needed. To install a new seal, use the air intake seal installation procedure provided in this bulletin.

8. Wipe clean the inside and outside of the duct, and install it on the vehicle. Tighten the clamp at the turbocharger 90 lbf-in (1020 N-cm) and the clamp at the air cleaner 40 lbf-in (450 N-cm).

Air Intake Seal Installation (108SD, 114SD, and M2 106 and 112 Vehicles)

For 108SD, 114SD, and M2 106 and 112 vehicles equipped with one of the air ducts listed in [Table 3](#), install seal 03-35087-002. If the air cleaner needs to be replaced, the seal can be installed before the new air cleaner is installed. If the air cleaner does not need to be replaced, the seal can be installed with the air cleaner installed on the vehicle. See [Table 1](#) to determine if the air cleaner needs to be replaced.

Air Intake Seal Installation (Air Cleaner On Vehicle)

1. Park the vehicle on a level surface, shut down the engine, and set the parking brake. Chock the tires.
2. Loosen the clamps at the air cleaner assembly and turbocharger, and remove the air intake duct. See [Fig.1](#).
3. Install seal 03-35087-002 on the air cleaner outlet as shown in [Fig. 3](#).
4. Apply P-80® Emulsion (or an equivalent lubricant) to the seal and base of housing to help install the housing into the duct. See [Fig. 4](#).
5. Wipe clean the inside and outside of the duct, and install it on the vehicle. Tighten the clamp at the turbocharger 90 lbf-in (1020 N-cm) and the clamp at the air cleaner 40 lbf-in (450 N-cm).

Air Intake Seal Installation (Air Cleaner Off Vehicle)

1. Park the vehicle on a level surface, shut down the engine, and set the parking brake. Chock the tires.
2. Loosen the clamps at the air cleaner assembly and turbocharger, and remove the air intake duct. See [Fig. 1](#).
3. Remove the air cleaner assembly, as follows:
 - For 108SD and 114SD vehicles, remove the air cleaner assembly and mounting bracket (together) from the vehicle.
 - For M2 106 and 112 vehicles, remove the air cleaner assembly from the mounting bracket.
4. For 108SD and 114SD vehicles, remove the air cleaner assembly from the mounting bracket.
5. Install seal 03-35087-002 on the outlet of the new air cleaner as shown in [Fig. 3](#).
6. For 108SD and 114SD vehicles, install the air cleaner assembly to the removed mounting bracket and tighten the fasteners 11 to 13 lbf-ft (15 to 18 N-m).
7. Install the air cleaner assembly to the mounting bracket on the vehicle and tighten the fasteners 11 to 13 lbf-ft (15 to 18 N-m).

FLA COE
FLB COE
FLD Conventional
Business Class
FLC 112 Conventional

Century Class Conventional
Argosy COE
Cargo
Columbia

122SD and Coronado
> Business Class M2
Cascadia
> 108SD/114SD

Freightliner Service Bulletin

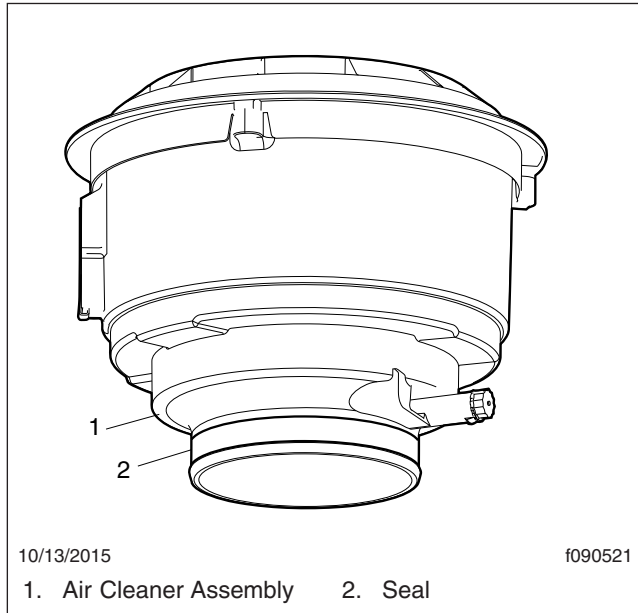


Fig. 3, Assembly, Air Intake Seal and Housing

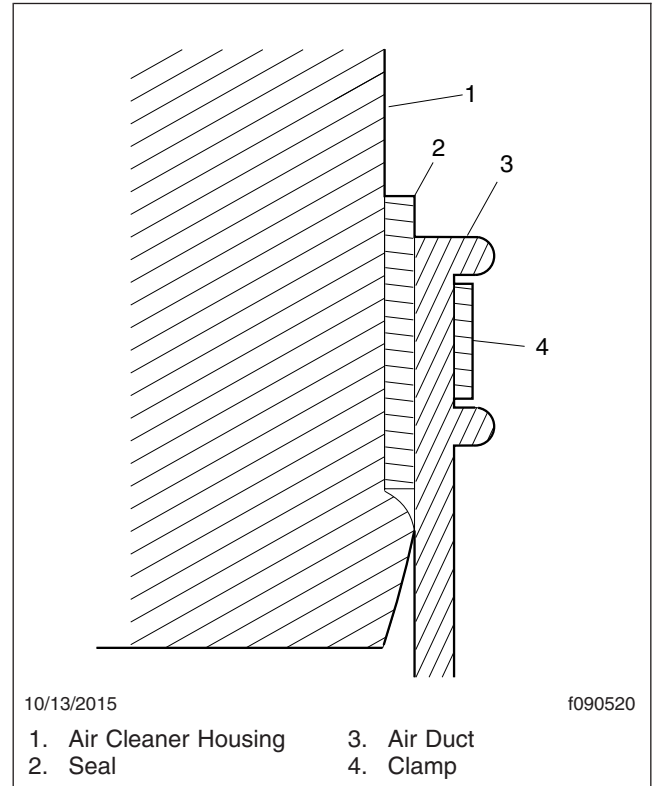


Fig. 4, Installation, Air Intake Seal and Housing

8. Apply P-80® Emulsion (or an equivalent lubricant) to the seal and base of housing to help install the housing into the duct. See [Fig. 4](#).
9. Wipe clean the inside and outside of the duct, and install it on the vehicle. Tighten the clamp at the turbocharger 90 lbf-in (1020 N·cm) and the clamp at the air cleaner 40 lbf-in (450 N·cm).

Warranty

This bulletin is informational only. Warranty does not apply.