



# Technical Journal

TITLE:

**Lock switch in rear door panel sticks**

<b>REF NO:</b> TJ 32010.1.0	<b>ISSUING DEPARTMENT:</b> Technical Service	<b>CAR MARKET:</b> United States and Canada	
<b>PARTNER:</b> 3 US 7510 Volvo Car USA		<b>ISSUE DATE:</b> 2016-11-04	<b>STATUS DATE:</b> 2016-11-10
<b>FUNC GROUP:</b> 8316	<b>FUNC DESC:</b> COMP INNER DOOR	Page 1 of 6	

“Right first time in Time”

## Attachment

File Name	File Size
TJ 32010.pdf	1.1648 MB

## Vehicle Type

Type	Eng	Eng Desc	Sales	Body	Gear	Steer	Model Year	Plant	Chassis range	Struc Week Range
256							2016-2016		0000561-0027179	201505-201535

## CSC Customer Symptom Codes

Code	Description
TU	Central locking/Central locking by using button in door panel does not work

## VST Operation Number

VST Operation Number	Description
98647-2	Central locking switch 2 sides adjust acc. to TJ32010

## DTC Diagnostic Trouble Codes

## Text

**DESCRIPTION:**

It may be possible for the rear door lock switch to get stuck in the speaker grille. This can lead to a drained battery. Applies only for cars with Premium or High Performance stereo.

**SERVICE:**

Check for/remove edges in the hole for the button in the speaker grille. Follow attached method "TJ 32010.pdf" or the video "Speaker\_Grill.mp4".

**VEHICLE REPORT:**

Yes, please submit a Vehicle Report if the service solution described in this TJ has no effect or if vehicles is outside of the affected structure week.. Use concern area "Vehicle Report" and sub concern area "Support not needed", use function group 8316.

**To view TJ attachment continue to next page. This TJ has one attachment.**



## Volvo Car Customer Service

TJ 32010

<b>Title</b>	Central locking switch	<b>Page</b>	1 ( 4 )
<b>Action</b>	Product fix	<b>Operation number:</b>	98647-2

### Affected vehicles

Model year	Model
2016	XC90 (16-)

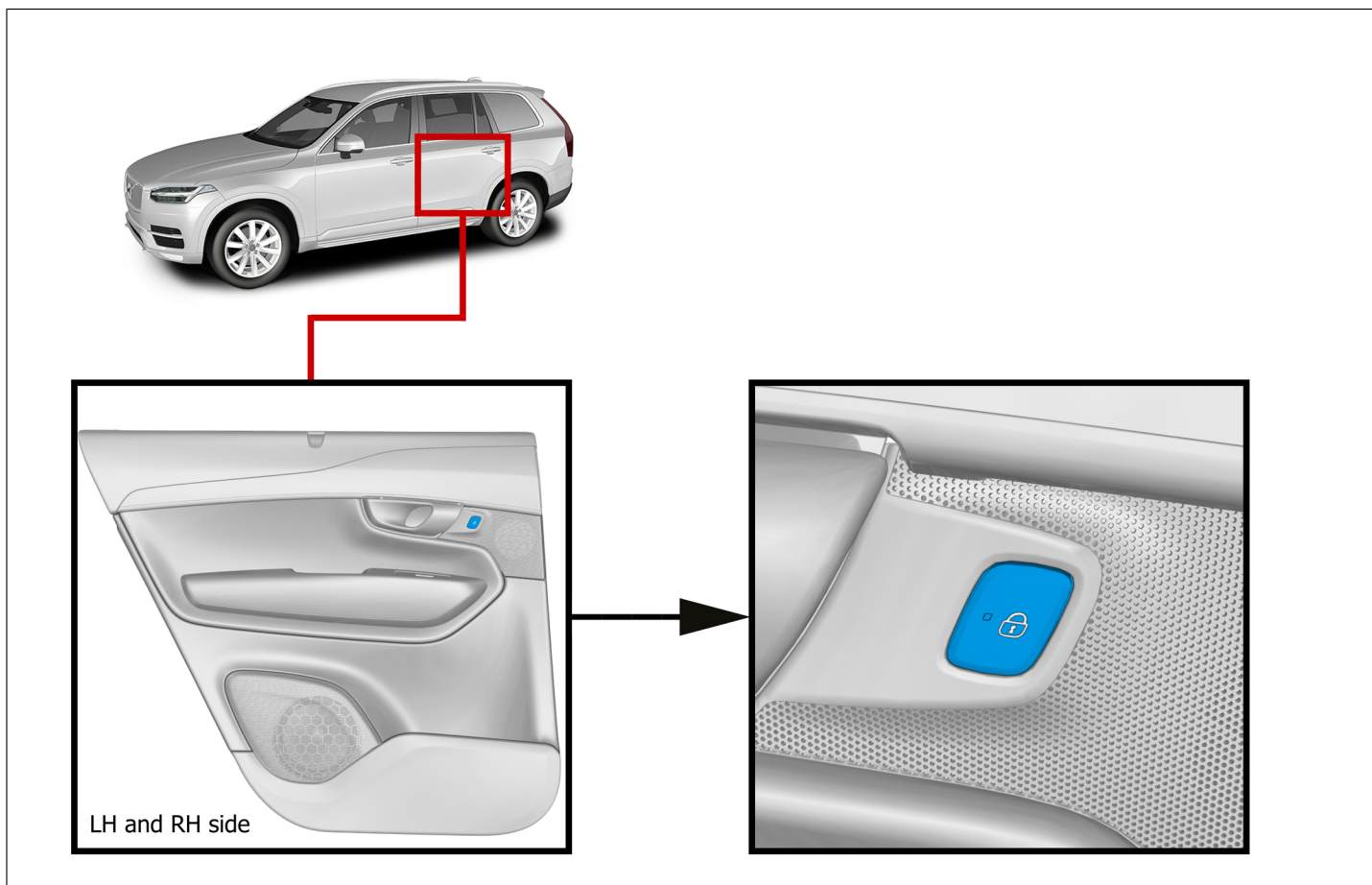
### Special tools

Description	Part No.
Interior trim remover	981 4071

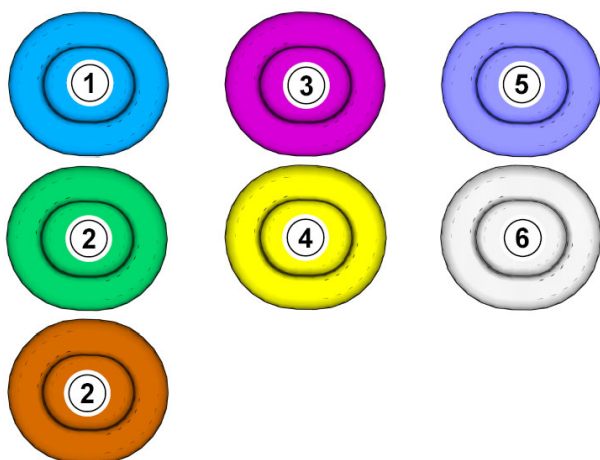
### Equipment

Designation	Part No.
Electrician's screwdriver	

## Image philosophy



## Color symbols



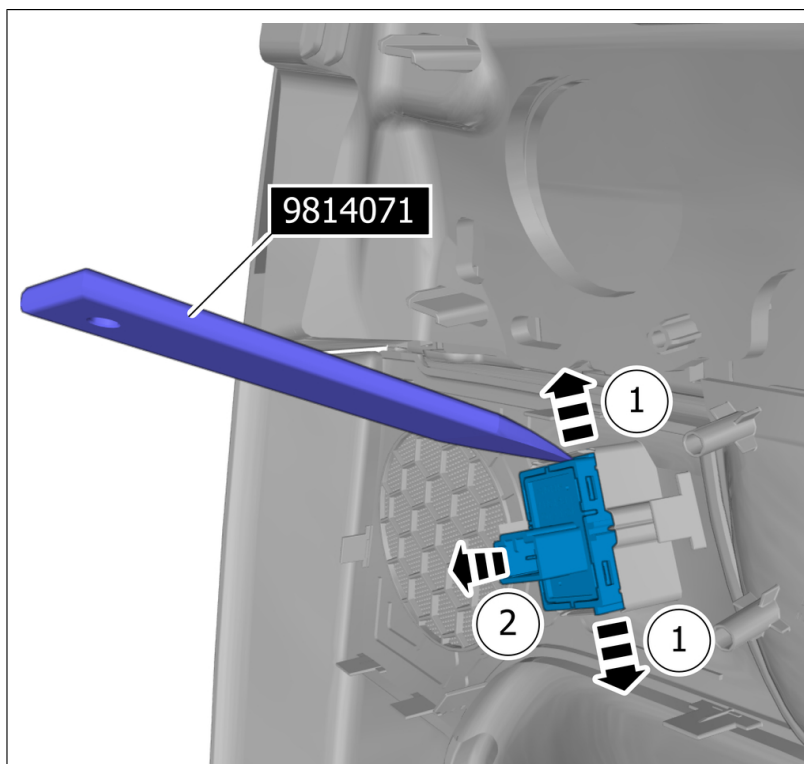
**Note! This colour chart displays (in colour print and electronic version) the importance of the different colours used in the images of the method steps.**

- 1 . Used for focused component, the component with which you will do something.
- 2 . Used as extra colors when you need to show or differentiate additional parts.
- 3 . Used for attachments that are to be removed/installed. May be screws, clips, connectors, etc.
- 4 . Used when the component is not fully removed from the vehicle but only hung to the side.
- 5 . Used for standard tools and special tools.
- 6 . Used as background color for vehicle components.

## Removal

Remove panel side door rear , refer to:  
Removal, replacement and installation  
8 - Body and interior  
85 - Interior  
851 - upholstery for wall/door, side, rear  
shelf, luggage rack

On both sides.



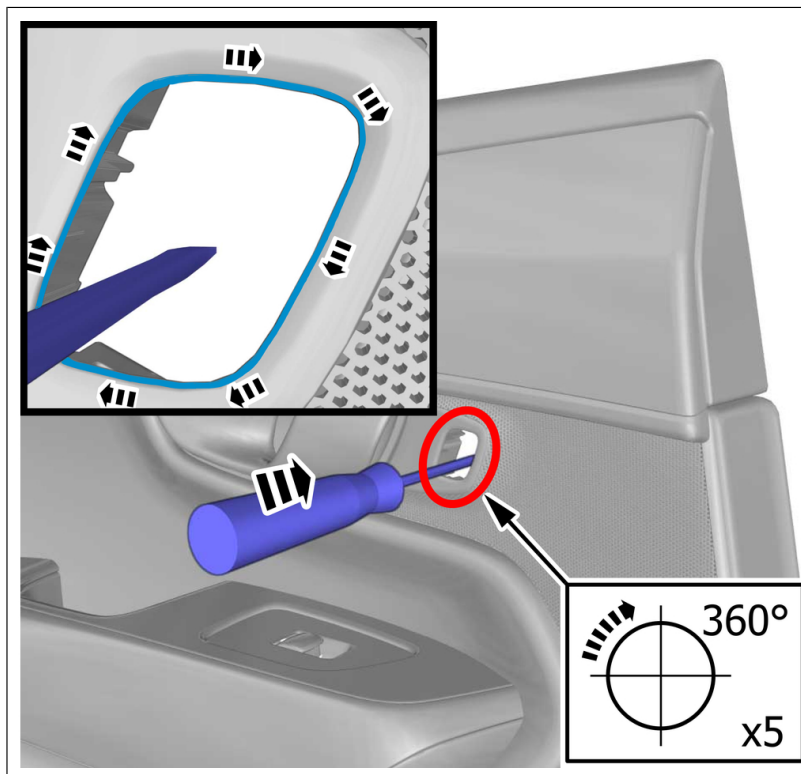
Disconnect the connector.

- 1 . Release the catches.
- 2 . Remove the marked part.

On both sides.

Special Tool: T9814071, Interior trim remover

### Adjustment



**Caution! Sharp edge. Risk of injury.**

**Caution! Make sure that equal pressure is applied to the full length of the component.**

**Use:** Electrician's screwdriver

Use hands only.  
On both sides.

Check that all defects are gone.

To install, reverse the removal procedure.

### Check

Press the button.  
Check for correct operation.  
On both sides.