



SERVICE BULLETIN

Classification: AT12-009d	Reference: NTB12-103d	Date: June 9, 2016
------------------------------	--------------------------	-----------------------

CVT / TCM CALIBRATION DATA “WRITE” PROCEDURE

This bulletin has been amended to add Juke to the Applied Vehicles section.
Please discard previous versions of this bulletin.

APPLIED VEHICLES: 2013 – 2016 Altima Sedan (L33)
2013 – 2016 Pathfinder (R52)
2015 – 2016 Murano (Z52)
2015 – 2016 Quest (E52)
2014 – 2016 Rogue (T32)
2016 Maxima (A36)
2015 – 2016 Juke (F15)

NOTE: Does not apply to Pathfinder or Murano Hybrid.

SERVICE INFORMATION

The Service Procedure (starting on page 2) in this bulletin contains the steps to perform TCM Calibration Data “Write” Procedures. These procedures are used when a complete CVT is replaced, or a CVT control valve (valve body) is replaced, or a Transmission Control Module (TCM) is replaced.

NOTE: The following information may be helpful when performing the TCM Calibration Data “Write” Procedures:

- When starting the calibration “write” procedure in CONSULT-III (C-III) plus, and after selecting START under Work Support, the C-III plus screen may only blink.
If this occurs, close ASIST (if open) and then select Start again.
 - If there is still no change: reboot the CONSULT PC, keep ASIST closed, and restart this procedure from step 1.
 - If error “STOPPED, no comm. with ECU” shows when trying to write calibration data, verify that the vehicle is in park (P).

Nissan Bulletins are intended for use by qualified technicians, not 'do-it-yourselfers'. Qualified technicians are properly trained individuals who have the equipment, tools, safety instruction, and know-how to do a job properly and safely. NOTE: If you believe that a described condition may apply to a particular vehicle, DO NOT assume that it does. See your Nissan dealer to determine if this applies to your vehicle.

SERVICE PROCEDURE

IMPORTANT: If replacing the **TCM only**, skip to page 14:

(SAVE / WRITE CALIBRATION DATA WHEN REPLACING THE TCM)

ERASE / WRITE CALIBRATION DATA WHEN REPLACING CVT or VALVE BODY

NOTE:

- Use the following steps when a complete CVT, or valve body is replaced.
- Also use the following steps if the TCM was replaced with a complete CVT or valve body.

Before starting, make sure:

- ASIST on the CONSULT PC has been freshly synchronized to the current date.
- All C-III plus software updates (if any) have been installed.

1. Obtain the calibration file disk (**provided with the new CVT or valve body**).
2. Match the numbers on the disk with the new CVT or new valve body and QR label.
 - See pages 3 and 4 for number matching examples.

If a complete CVT is being replaced; match the following number (calibration file):

- Disc (CD) provided with the new CVT.

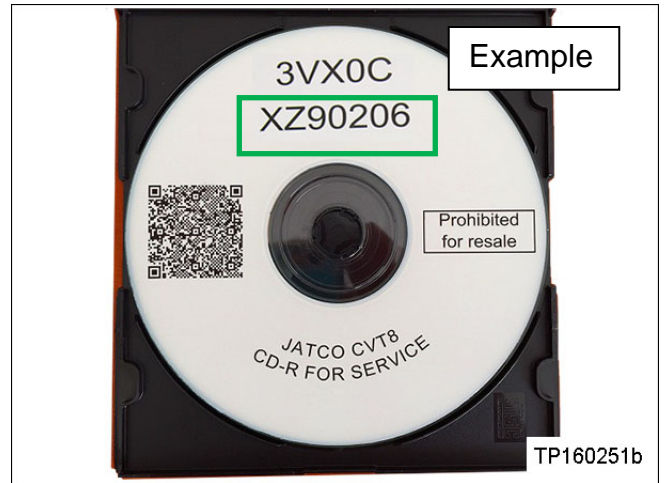


Figure A

- QR label on the new CVT.

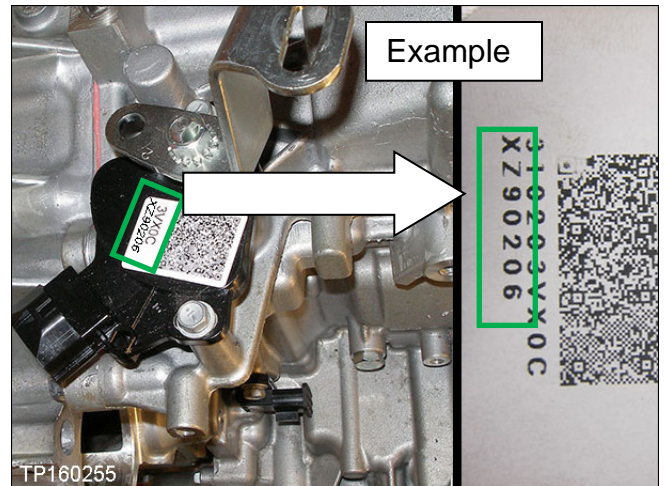


Figure B

- Calibration file number on the CVT case or label.

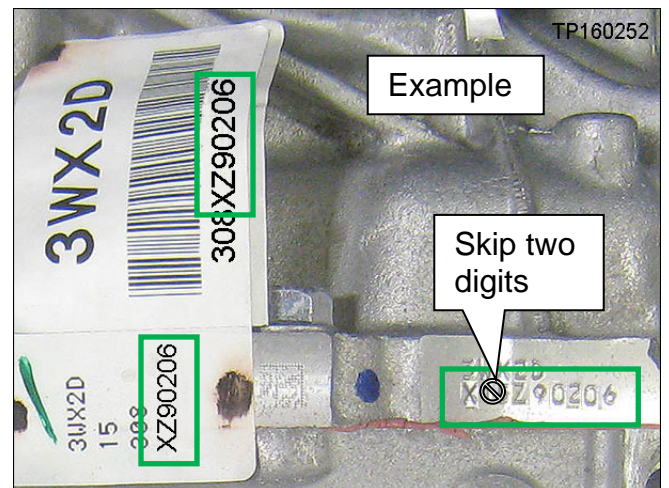


Figure C

IMPORTANT: All three of the above numbers must be the same (they must match).

If a new valve body is being replaced; match the following number (calibration file):

- Disc (CD) provided with the new valve body.

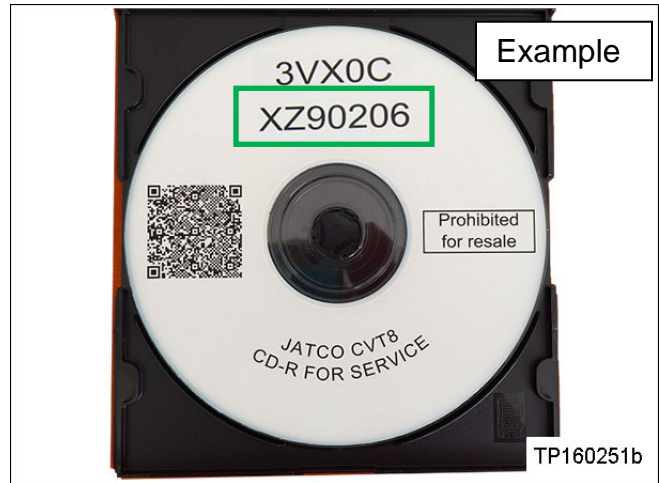


Figure D

- QR label provided with the new valve body.

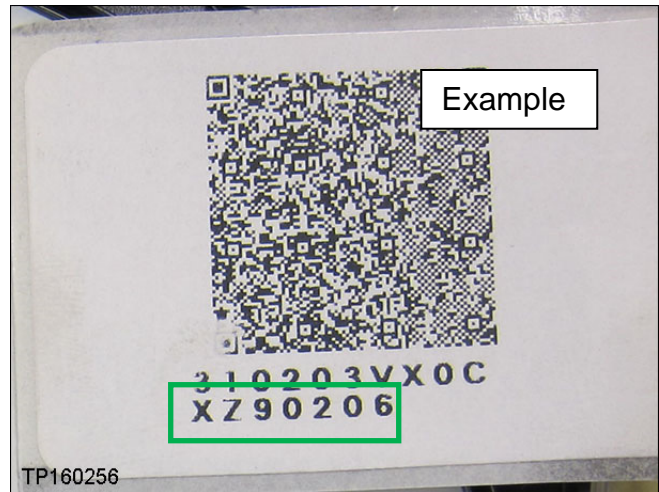


Figure E

- Calibration file number on the valve body.

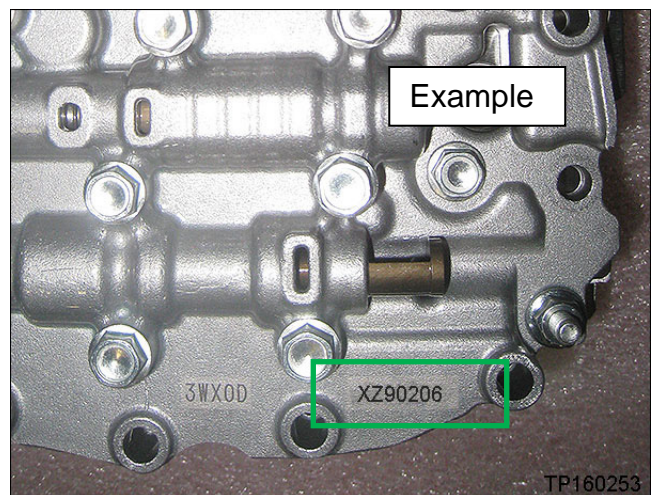


Figure F

IMPORTANT: All three of the above numbers must be the same (they must match).

3. Connect the external disk drive to the CONSULT PC.

NOTE: Use the external disk drive provided with the C-III plus kit.

4. Load the CD into the external disc drive.

5. Connect the CONSULT PC to the vehicle with the VI and then open / start C-III plus.

- Make sure ASIST and other programs are closed.

6. After the plus VI to be recognized, select **Diagnosis (All Systems)**.

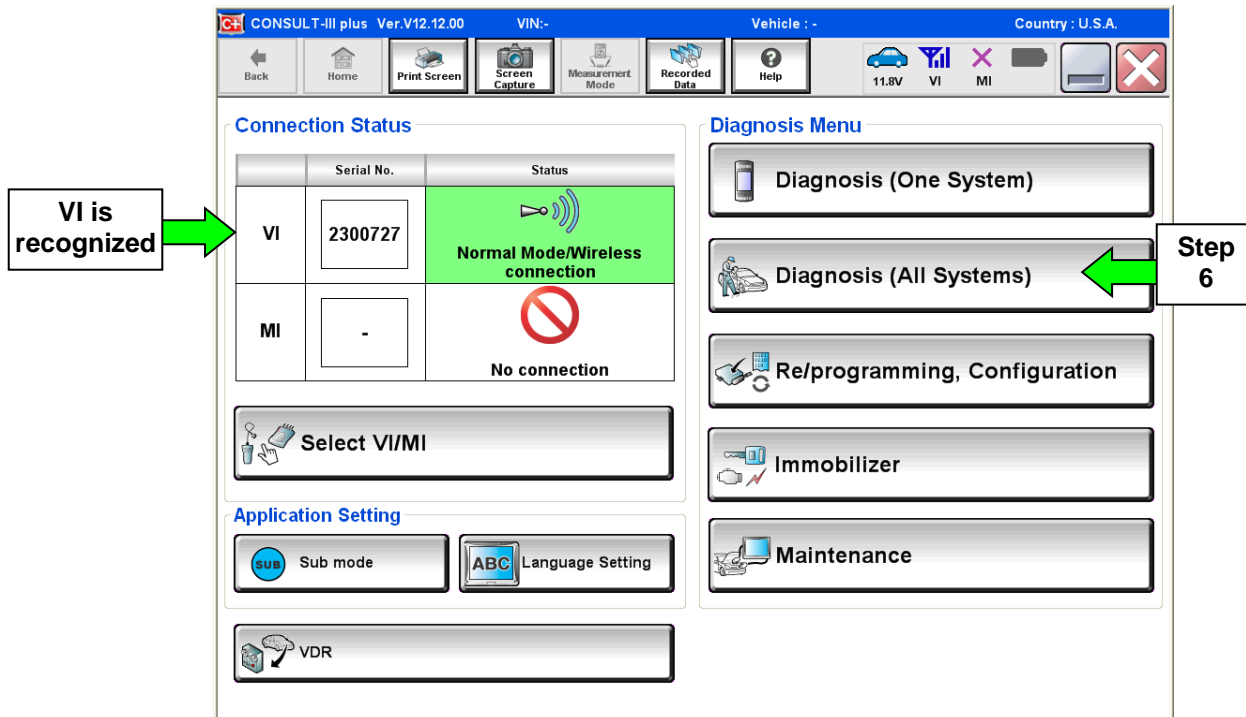


Figure 1

7. Navigate C-III plus to **TRANSMISSION > Work Support**.

8. Select the scroll arrow shown in Figure 2.

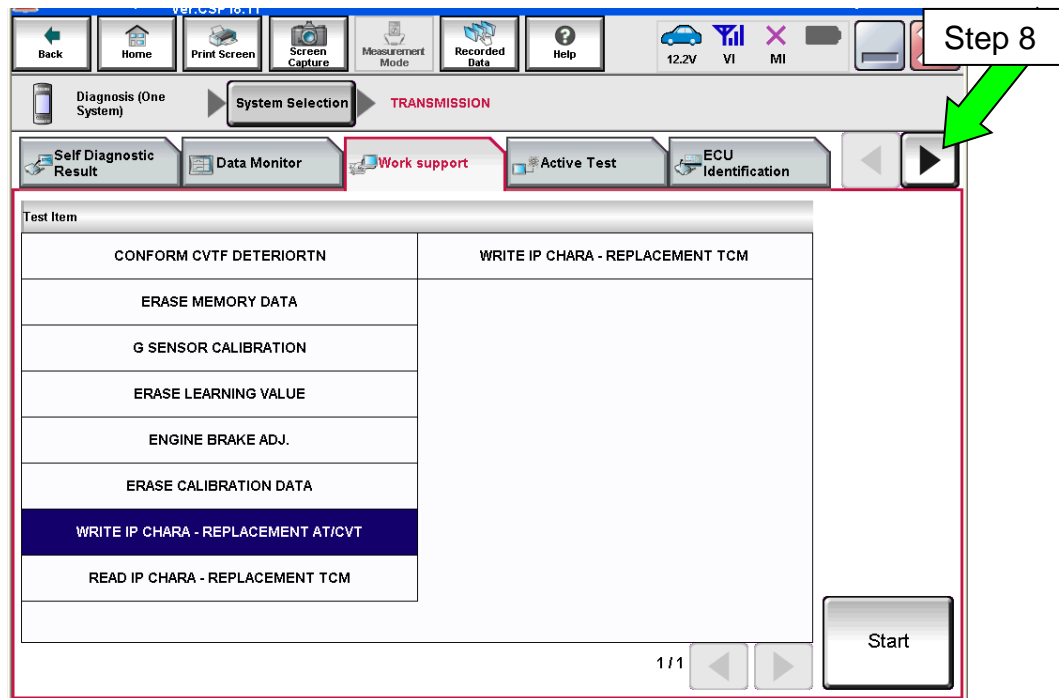


Figure 2

9. Print a copy of the screen shown in Figure 3 and attach it to the repair order.

NOTE:

- Make sure to print page 1 of 7 (1 / 7).
- This screen print is used for warranty documentation.

10. Select scroll arrow shown in Figure 3.

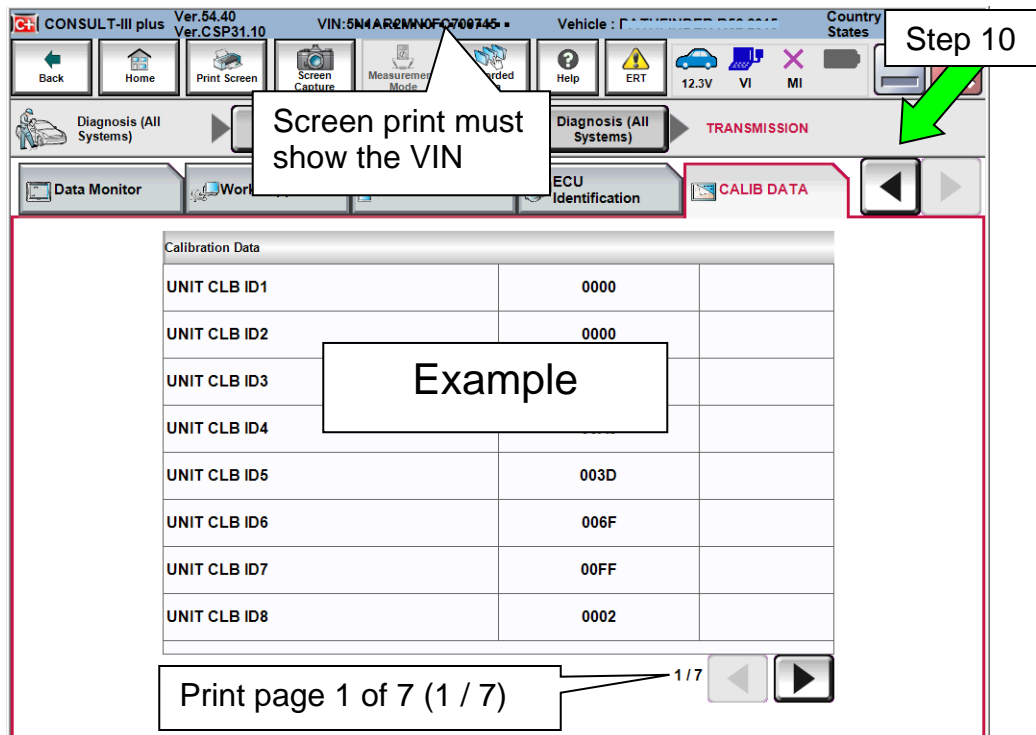


Figure 3

11. Select **WRITE IP CHARA – REPLACEMENT AT/CVT** and then **Start**.

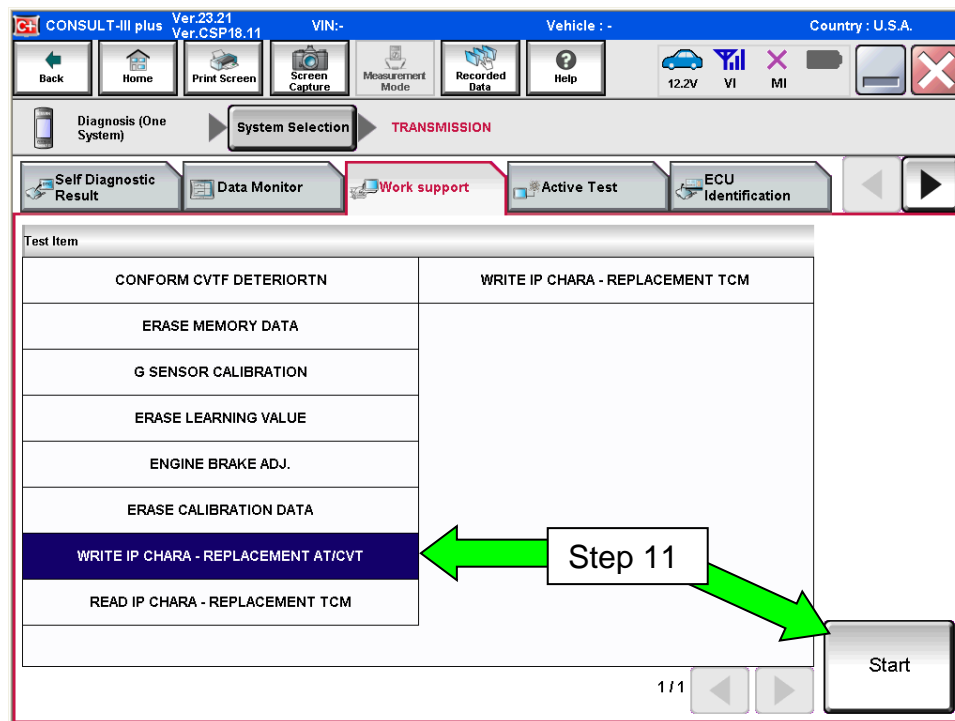


Figure 4

IMPORTANT: When starting the calibration “write” procedure in C-III plus, and after selecting **Start** under **Work Support**, the C-III screen may only blink.

- If this occurs, confirm ASIST is closed and then perform step 11 above.
 - If there is still no change: reboot the CONSULT PC, keep ASIST closed, and restart this procedure from step 1.
 - If error “STOPPED, no comm. with ECU” shows when trying to write calibration data, verify that the vehicle is in park (P).

12. Select **OK**.

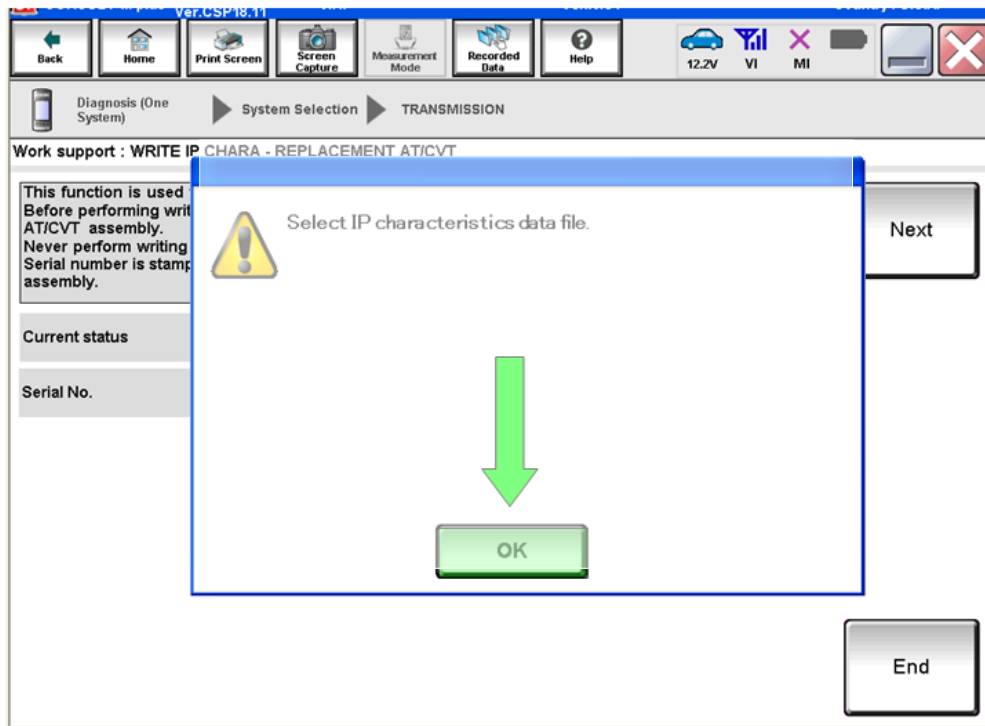


Figure 5

13. Select **My Computer**.

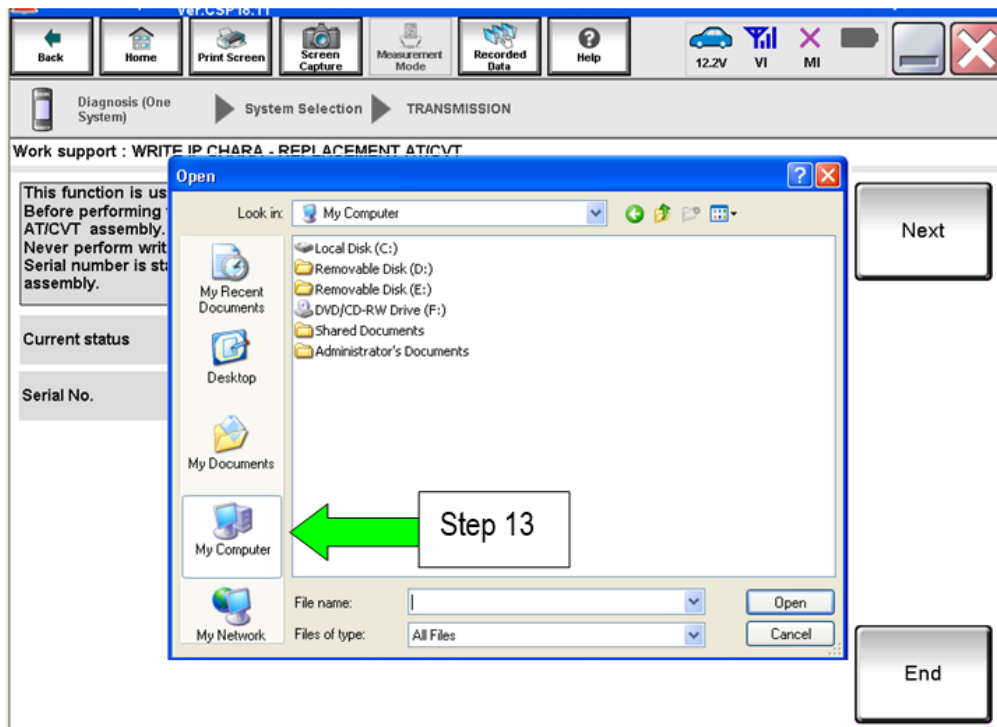


Figure 6

14. Select DVD/CD-RW Drive (F:)

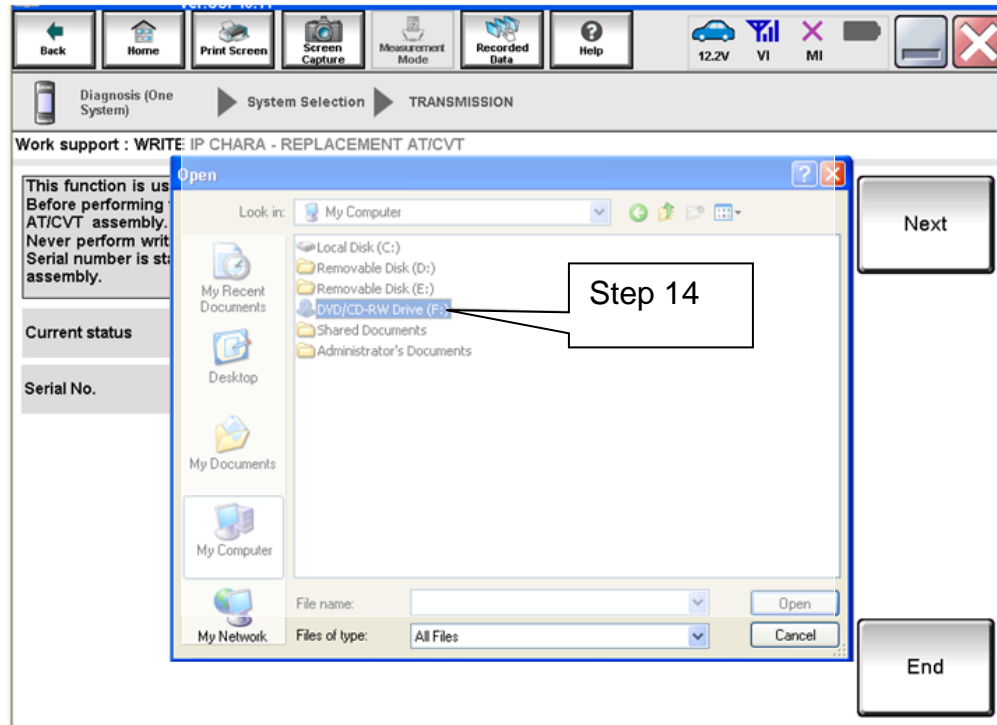


Figure 7

15. Highlight the File and then select **Open**.

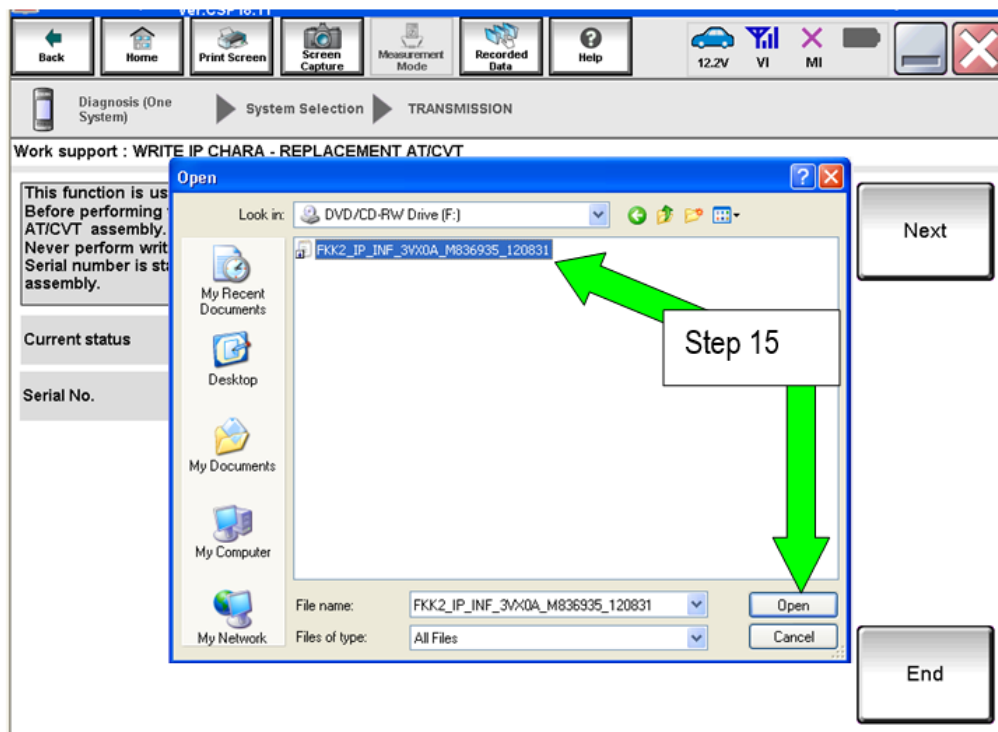


Figure 8

16. Verify that the serial number (calibration file number) matches the numbers from step 2 on page 2 (see Figures on pages 3 and 4).

- If the numbers do not match, call TECH LINE.

17. Select **Next**.

NOTE: If error message “Stopped, No Comm with ECU” is displayed, confirm that the vehicle is in Park.

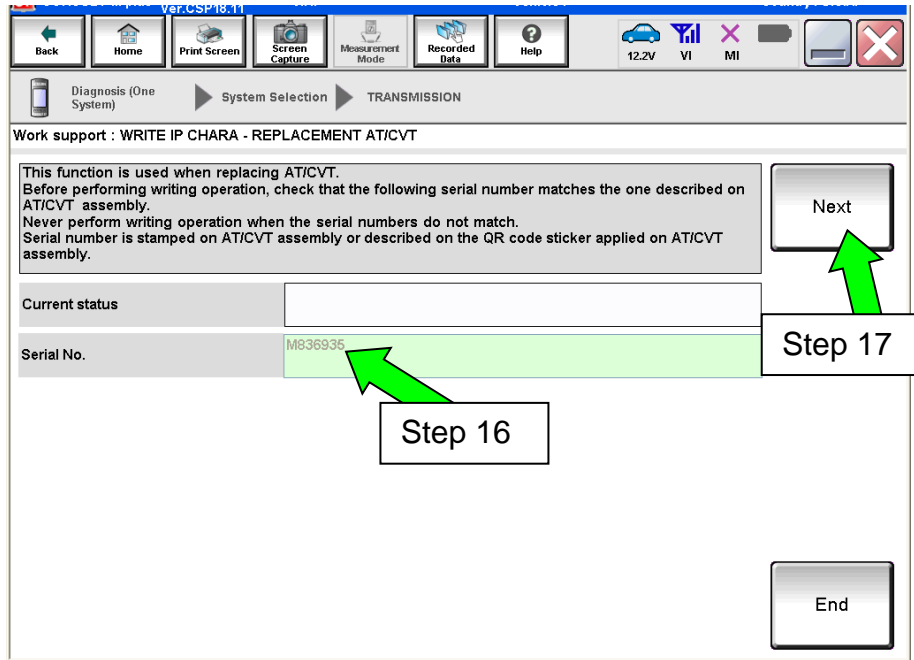


Figure 9

18. Before selecting **Start**, follow the directions in Figure 10.

- **Do not** follow the directions on the C-III plus screen.

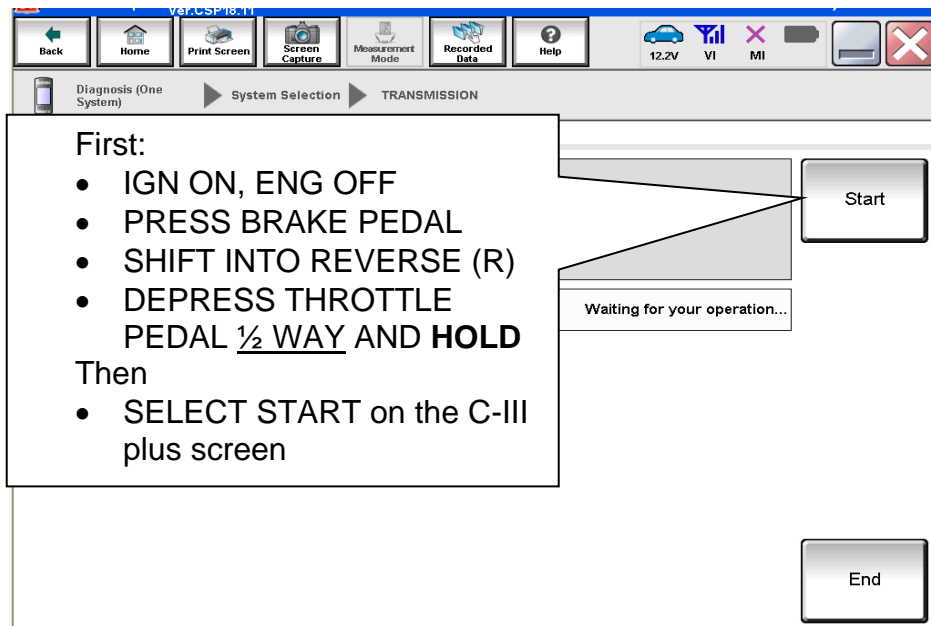


Figure10

19. Follow the on screen instructions.

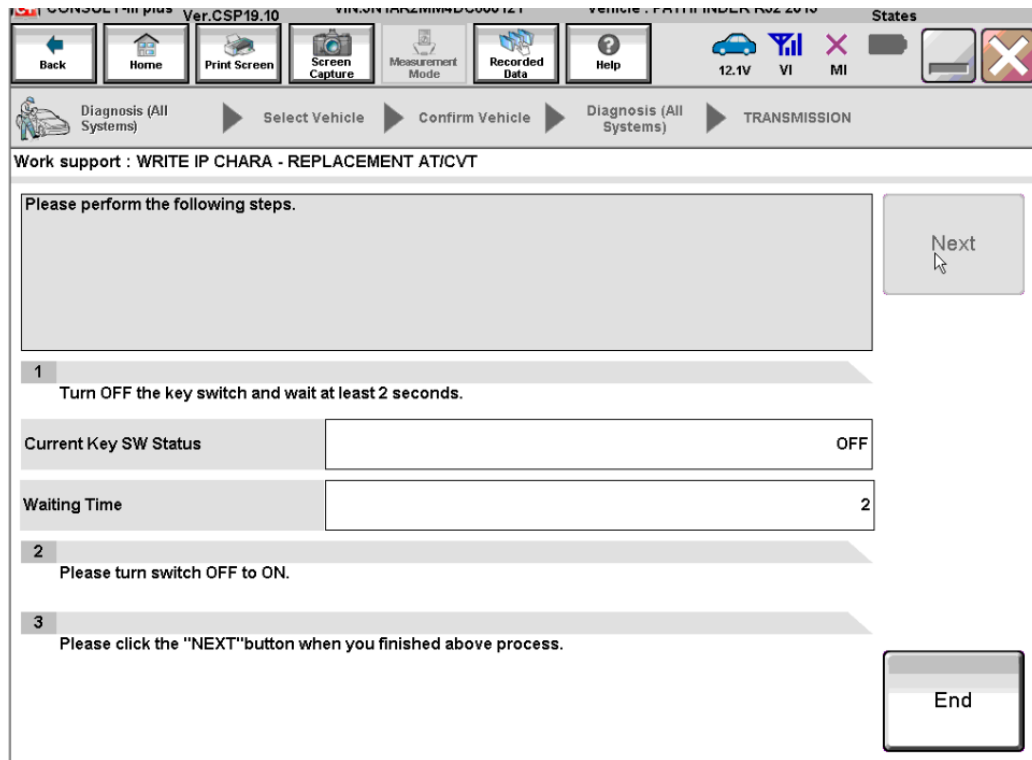


Figure 11

20. Follow the on screen instructions.

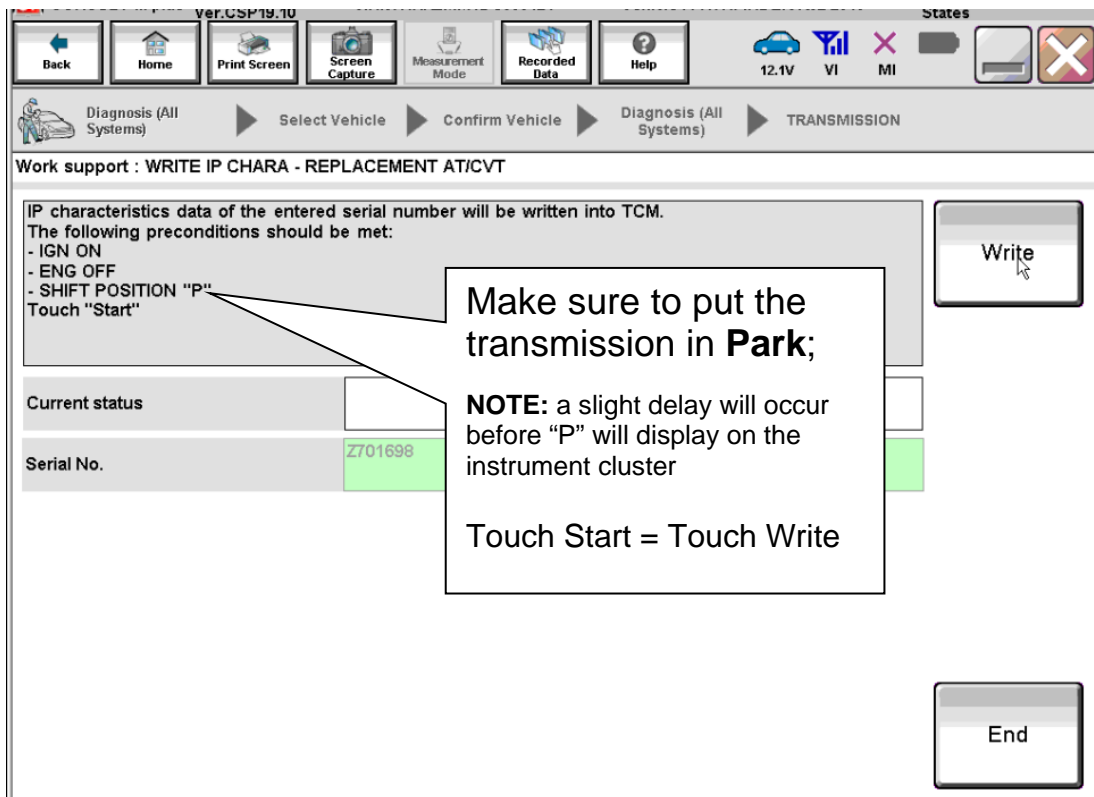


Figure 12

21. After Complete, select **End**.

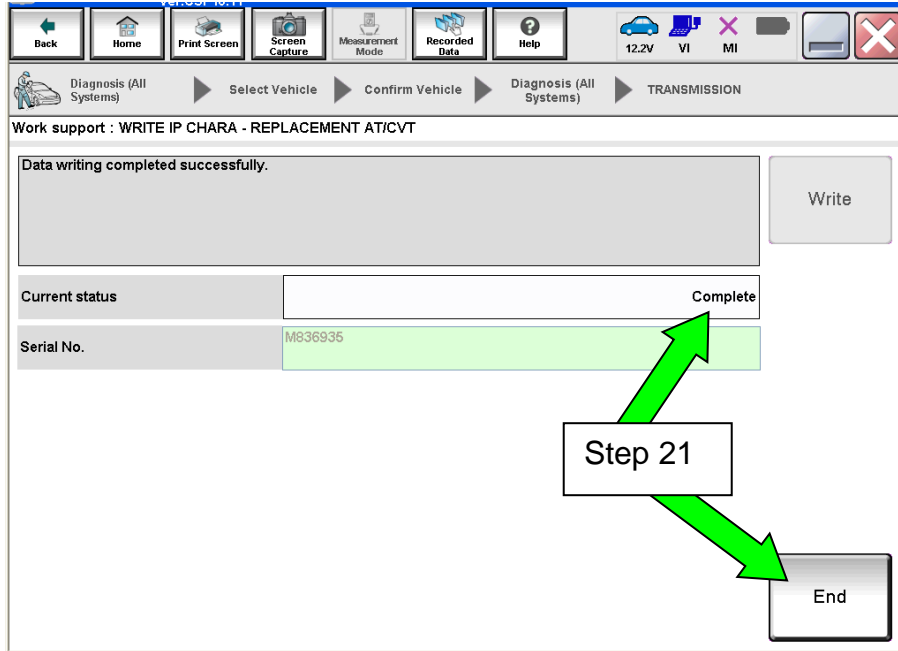


Figure 13

22. Select **Home** to return to the screen shown in Figure 1 page 5.

23. Perform steps 6 – 9, starting on page 5.

24. Attach the second screen print to the repair order.

NOTE: Screen prints are used for warranty documentation.

25. Clear any DTCs that may have set and then test drive the vehicle.

NOTE: Any DTCs that will not clear or that are set during the test drive are not covered by this bulletin. Refer to the appropriate Service Manual for further diagnostic information.

26. If the valve body was replaced, perform the Drive / Reverse Learn Procedure on the next page.

Drive / Reverse Learn Procedure

NOTE: If a complete CVT was replaced, this procedure is not needed.

1. Set the parking brake.
2. Start the Engine.
3. Wait 5 seconds.
4. Shift to Neutral.
5. Shift to Drive and wait for transmission engagement.
6. Repeat steps 4 and 5, ten (10) times.
7. Shift to Neutral.
8. Shift to Reverse and wait for transmission engagement.
9. Repeat steps 7 and 8, ten (10) times.
10. Shift to Park and turn the ignition OFF.

END

SAVE / WRITE CALIBRATION DATA WHEN REPLACING THE TCM

NOTE:

- The following steps are used if **TCM only** is replaced.
- If the **CVT or valve body** is being replaced, **go back to page 2**.
- **Before starting, make sure:**
 - ASIST on the CONSULT PC has been freshly synchronized to the current date.
 - All C-III plus software updates (if any) have been installed.

Save Calibration Data Before TCM Replacement

1. Connect the CONSULT PC to the vehicle.
2. Open / start C-III plus.
 - Make sure ASIST and other programs are closed.
3. Wait for the plus VI to be recognized.
 - The serial number will display when the plus VI is recognized.
4. Select **Diagnosis (One System)**.

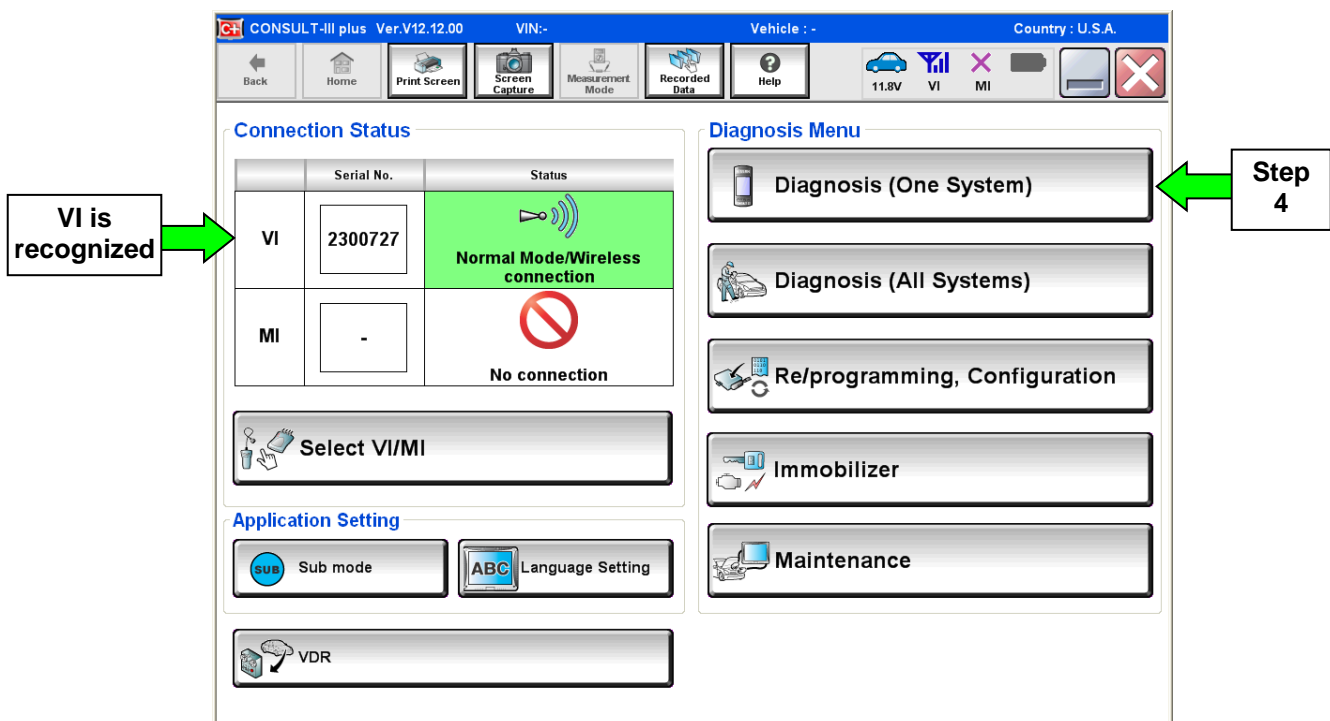


Figure A1

5. Navigate C-III plus to **TRANSMISSION >> Work Support**.

6. Select **READ IP CHARA – REPLACEMENT TCM**, and then **Start**.

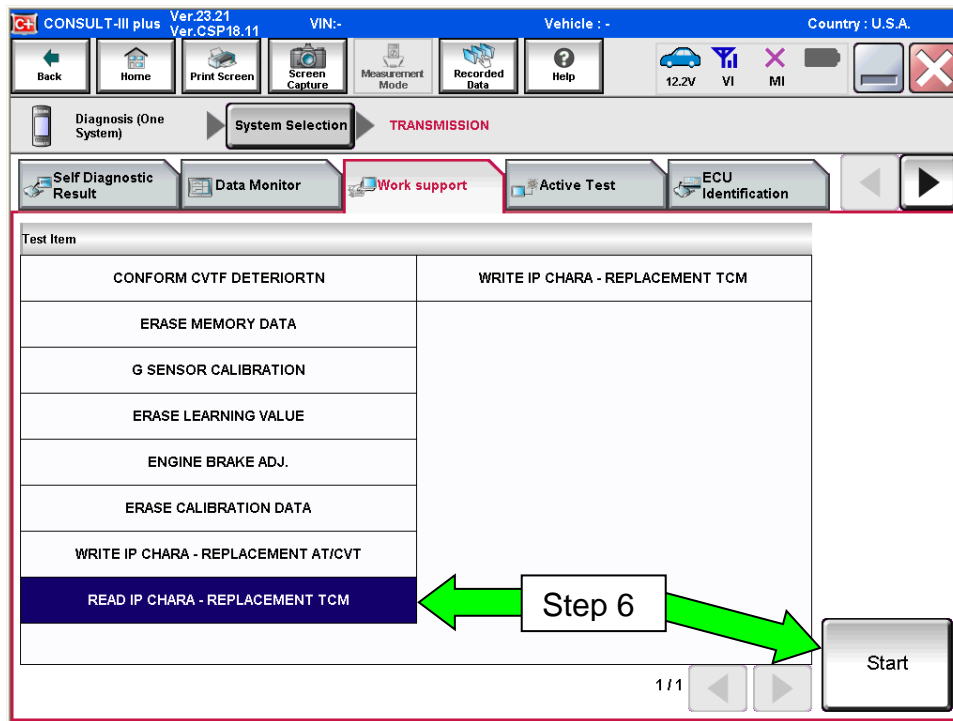


Figure A2

7. Select **Start**.

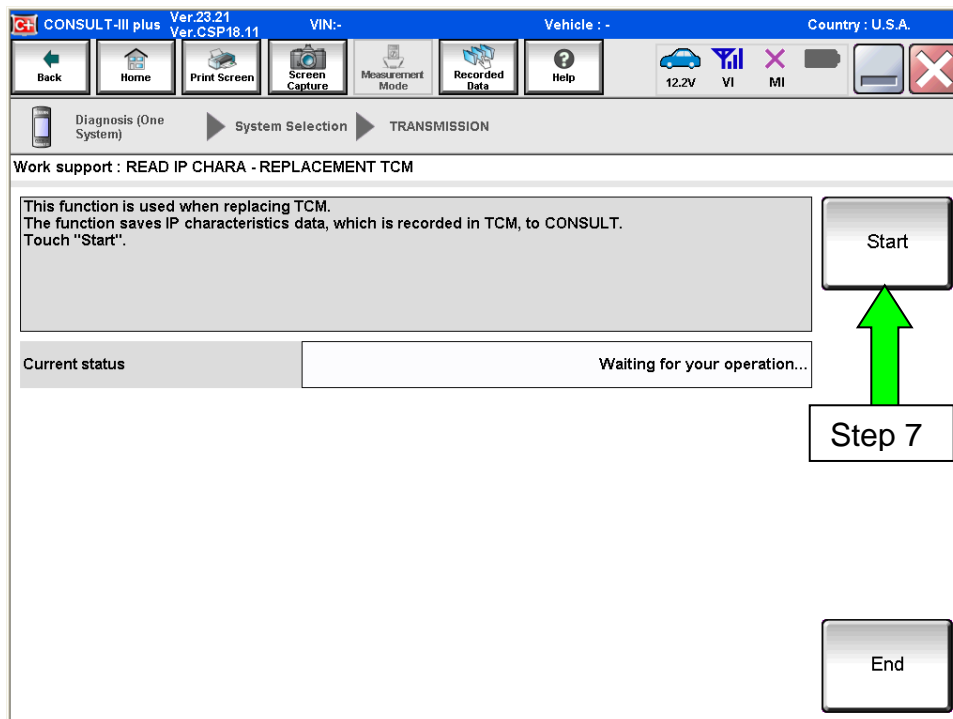


Figure A3

- When the calibration data has been saved to the CONSULT PC, the message “**Data saved successfully**” will be displayed and **Current status** will indicate **Completed** (see Figure A4).
- Select **End**.

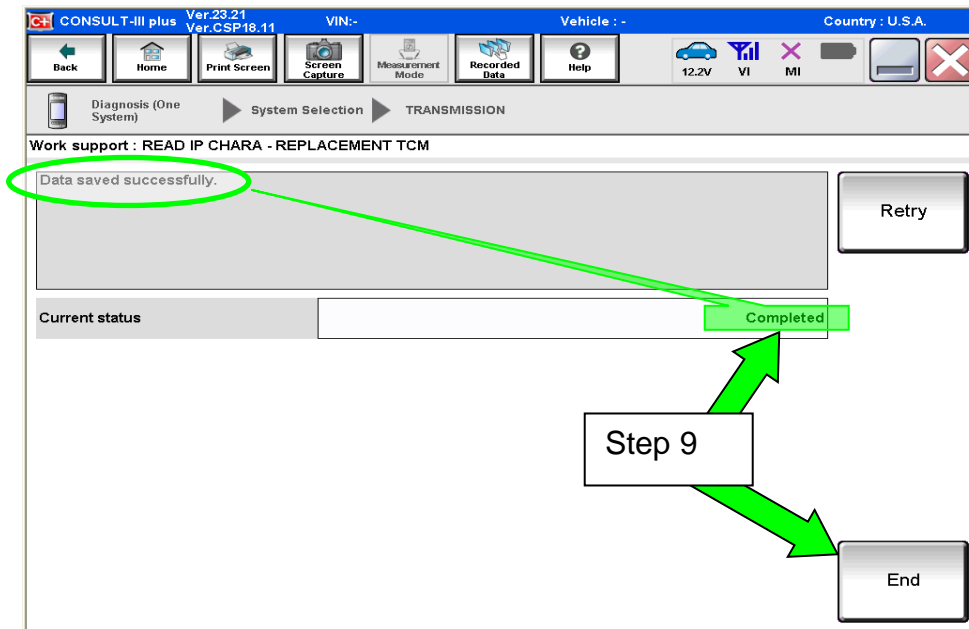


Figure A4

- Replace the TCM.
- After the TCM has been replaced, go to Write Calibration Data After TCM Replacement on the next page.

Write Calibration Data After TCM Replacement

12. After the TCM has been replaced, select **WRITE IP CHARA – REPLACEMENT TCM**, then **Start**.

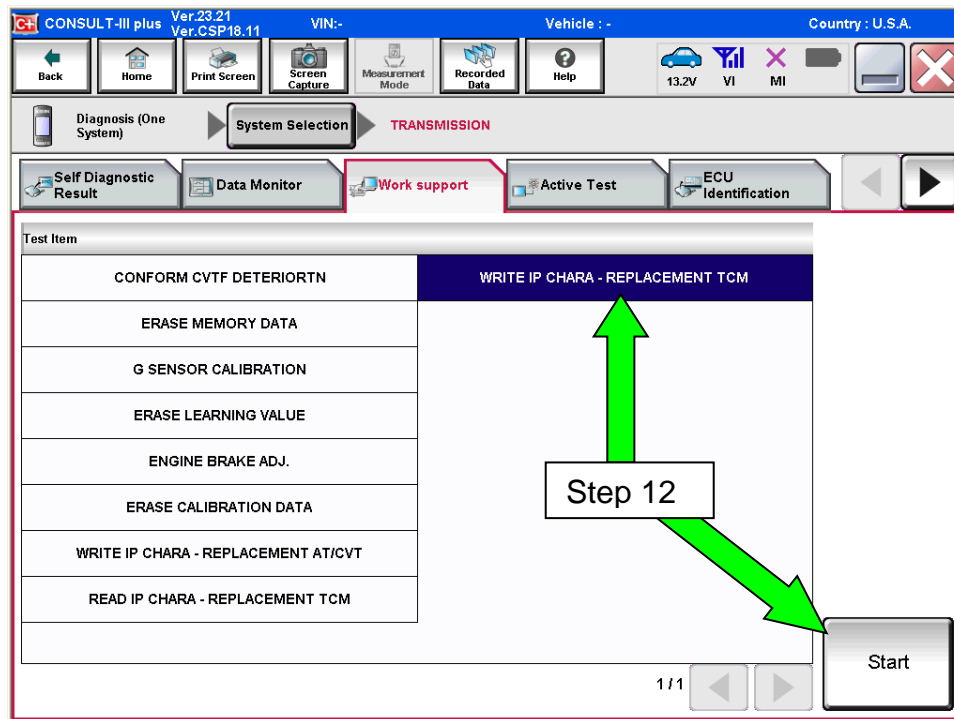


Figure A5

IMPORTANT: When starting the calibration “write” procedure in C-III plus, and after selecting **Start** under **Work Support**, the C-III plus screen may only blink.

- If this occurs, confirm ASIST is closed and then perform step 12 above.
 - If there is still no change: reboot the CONSULT PC, keep ASIST closed, and restart the procedure from the beginning.
 - If error “STOPPED, no comm. with ECU” shows when trying to write calibration data, verify that the vehicle is in park (P).

13. Select **Start** again.

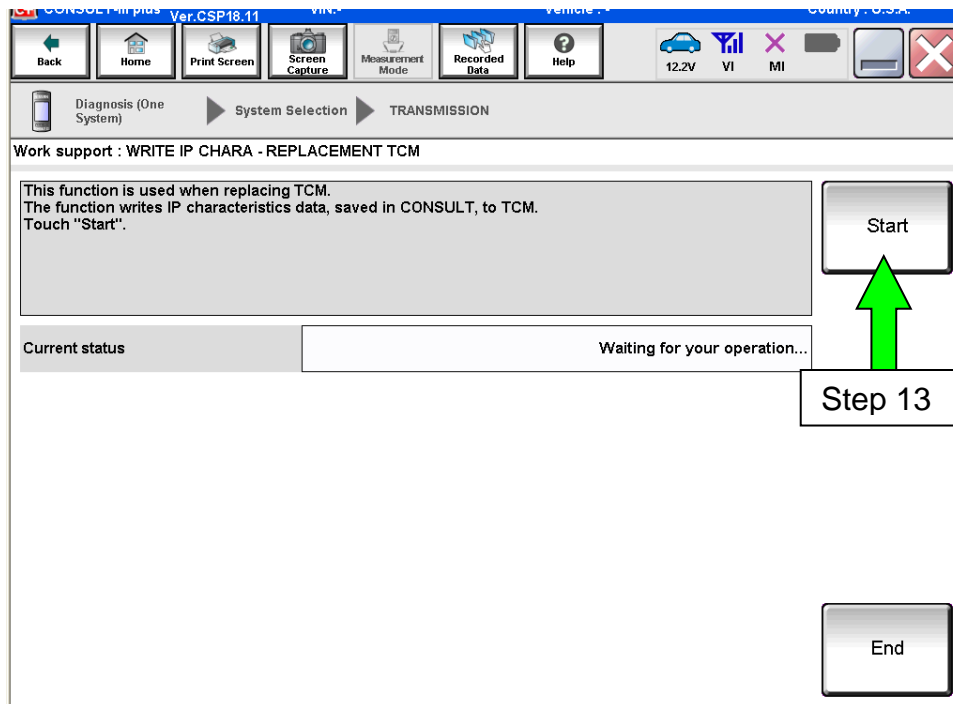


Figure A6

14. Select **Yes**.

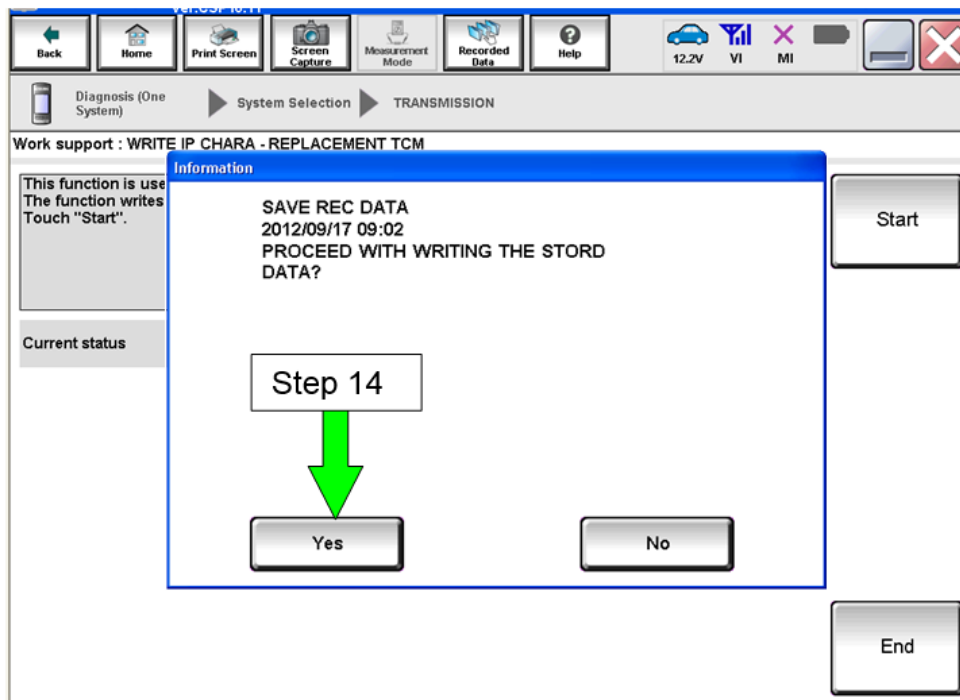


Figure A7

15. When the calibration data has been written to the TCM, the message “**Data writing completed successfully**” will be displayed and **Current status** will indicate **Complete** (Figure A8).

16. After Complete, select **End** to finish.

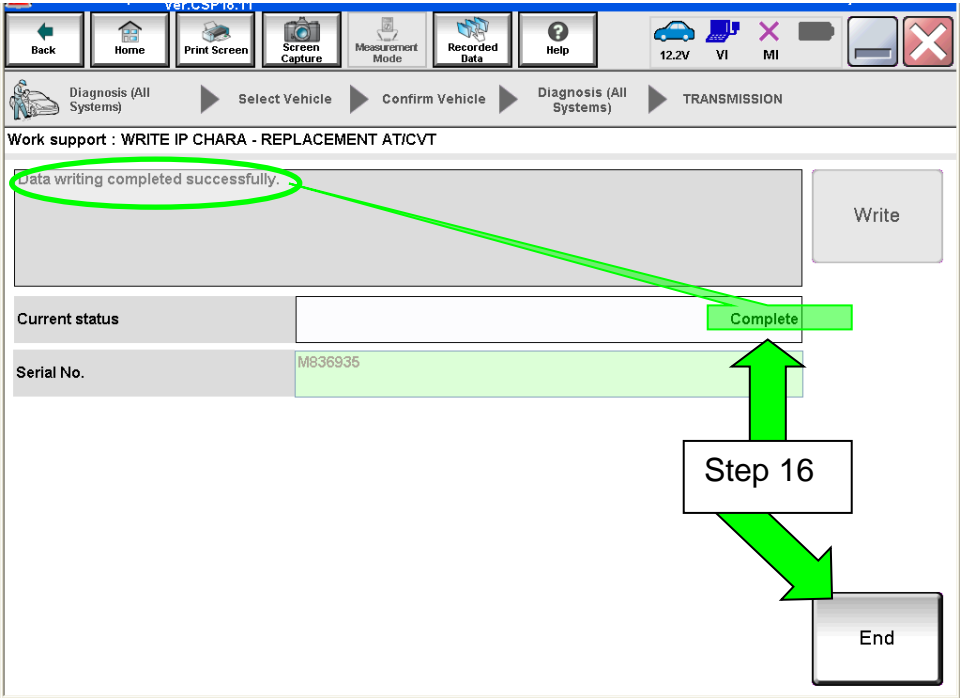


Figure A8

17. Clear any DTCs that may have set and then test drive the vehicle.

NOTE: Any DTCs that will not clear or that are set during the test drive are not covered by this bulletin. Refer to the appropriate Service Manual for further diagnostic information.

