

Classification:

EC12-010f

Reference:

ITB12-026f

COPYRIGHT© NISSAN NORTH AMERICA, INC.

Date:

March 15, 2016

## MIL ON WITH DTC P0106 STORED

This bulletin has been amended to edit the part numbers in Table A on page 5 and remove 2010 G37 Convertible from Applied vehicles. No other changes have been made. Please discard all previous versions of this bulletin.

**APPLIED VEHICLES:**

2010-2012 FX50 (S51)  
2010-2012 G37 Sedan (V36)  
2010-2012 G37 Coupe (CV36)  
2011-2012 G37 Convertible (HV36)  
2011-2012 M37 and M56 (Y51)  
2011-2012 QX56 (Z62)

**IF YOU CONFIRM:**

An APPLIED VEHICLE has the MIL ON with DTC P0106 (Manifold Absolute Pressure [MAP] circuit range/performance) stored in the ECM.

**ACTION:**

1. Refer to step 6 in the **SERVICE PROCEDURE** to confirm this bulletin applies to the vehicle you are working on.
2. If this bulletin applies, reprogram the ECM with CONSULT-III plus **ONLY**.

**IMPORTANT:** The purpose of **ACTION** (above) is to give you a quick idea of the work you will be performing. You **MUST** closely follow the entire **SERVICE PROCEDURE** as it contains information that is essential to successfully completing this repair.

Infiniti Bulletins are intended for use by qualified technicians, not 'do-it-yourselfers'. Qualified technicians are properly trained individuals who have the equipment, tools, safety instruction, and know-how to do a job properly and safely. NOTE: If you believe that a described condition may apply to a particular vehicle, DO NOT assume that it does. See your Infiniti dealer to determine if this applies to your vehicle.

## SERVICE PROCEDURE

### NOTE:

- Most instructions for reprogramming with CONSULT-III plus (C-III plus) are displayed on the CONSULT PC screen.
- If you are not familiar with the reprogramming procedure, click [here](#). This will link you to the "CONSULT- III plus (C-III plus) ECM Reprogramming" general procedure.
- Take the vehicle for a 10 minute drive in order to meet the following Idle Air Volume Learn (IAVL) conditions:
  - Engine coolant temperature: 70 - 105°C (158 - 221°F)
  - Battery voltage: More than 12.9V (At idle)
  - Transmission: Warmed up



Figure A

- After reprogramming is complete, you will be required to perform Throttle Valve Closed Position, Idle Air Volume Learn, Accelerator Closed Position, and DTC erase.

### CAUTION:

- Connect the GR8 to the vehicle 12 volt battery and set to ECM power supply mode. If the vehicle battery voltage drops below 12.0V or above 15.5V during reprogramming, the ECM may be damaged.
- Be sure to turn OFF all vehicle electrical loads. If a vehicle electrical load remains ON, the ECM may be damaged.
- Be sure to connect the AC Adapter. If the CONSULT PC battery voltage drops during reprogramming, the process will be interrupted and the ECM may be damaged.
- Turn off all external Bluetooth® devices (e.g., cell phones, printers, etc.) within range of the CONSULT PC and the VI. If Bluetooth® signal waves are within range of the CONSULT PC during reprogramming, reprogramming may be interrupted and the ECM may be damaged.

1. Connect the CONSULT PC to the vehicle to begin the reprogramming procedure.
2. Start C-III plus.

**NOTE:** This is a C-III plus **ONLY** reprogram.

3. Wait for the plus VI to be recognized / connected.
  - The serial number will display when the plus VI is recognized / connected.
4. Select **Re/programming, Configuration**.

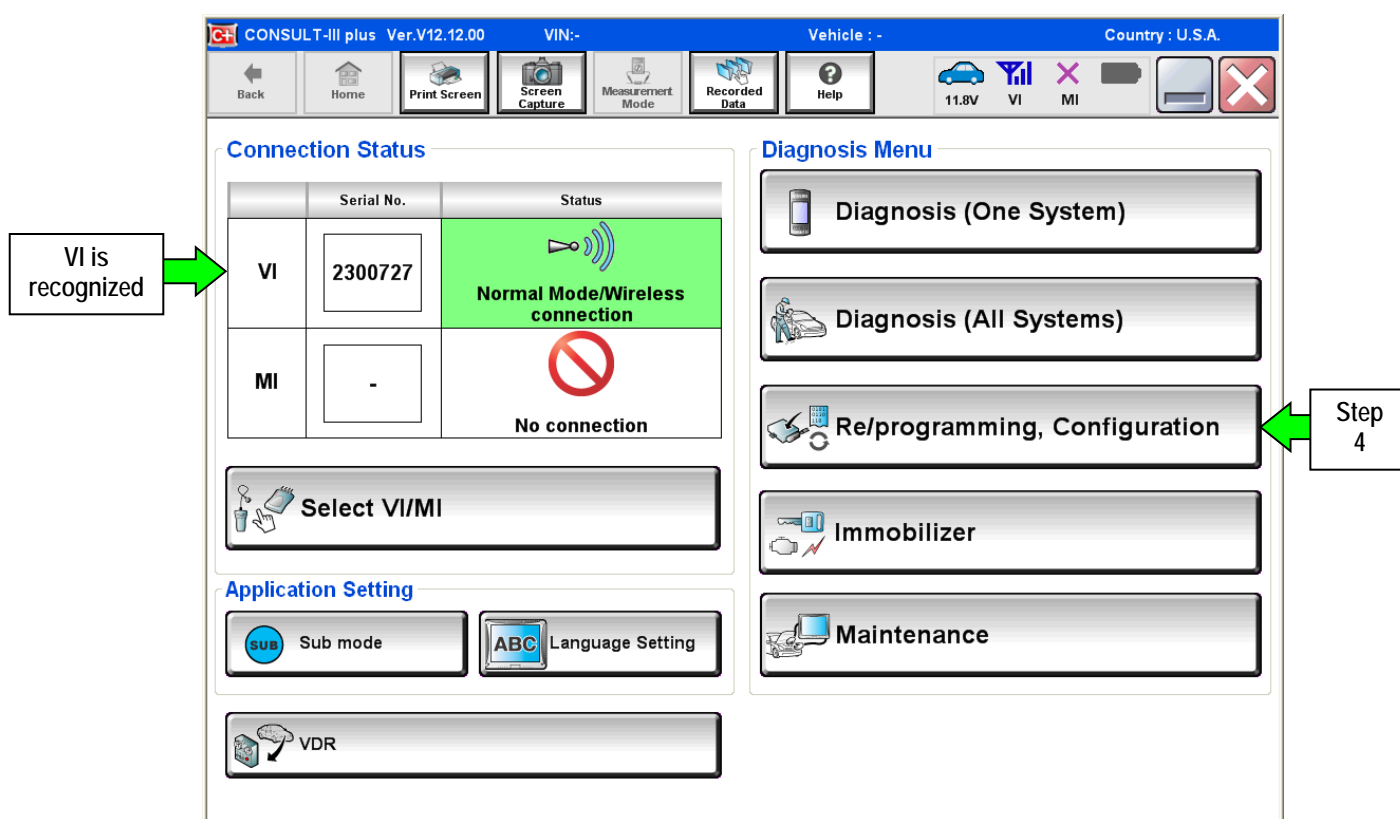


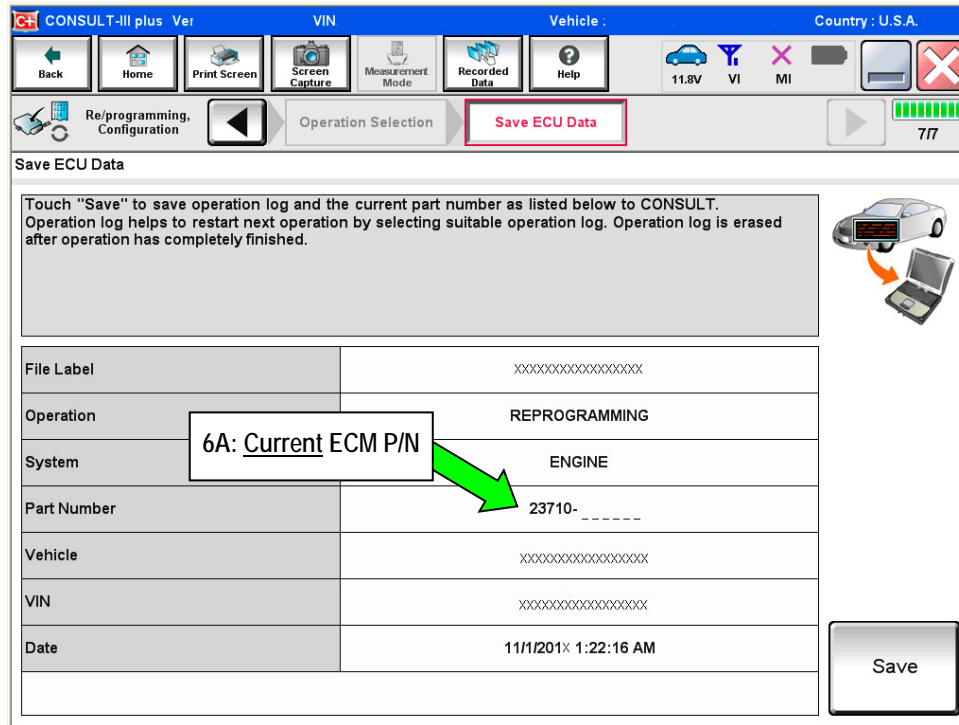
Figure 1

5. Follow the on-screen instructions and navigate the C-III plus to the screen shown in Figure 2 on the next page.

6. When you get to the screen shown in Figure 2, confirm this bulletin applies as follows.

A. Find the ECM **Part Number** and write it on the repair order.

**NOTE:** This is the current ECM Part Number (P/N).



CONSULT-III plus Ver. VIN Vehicle Country : U.S.A.

Back Home Print Screen Screen Capture Measurement Mode Recorded Data Help 11.8V VI MI 7/7

Re-programming, Configuration Operation Selection **Save ECU Data**

Save ECU Data

Touch "Save" to save operation log and the current part number as listed below to CONSULT. Operation log helps to restart next operation by selecting suitable operation log. Operation log is erased after operation has completely finished.

File Label	XXXXXXXXXXXXXXXXXXXX
Operation	REPROGRAMMING
System	ENGINE
Part Number	23710- _____
Vehicle	XXXXXXXXXXXXXXXXXXXX
VIN	XXXXXXXXXXXXXXXXXXXX
Date	11/1/201X 1:22:16 AM

Save

Figure 2

B. Compare the P/N you wrote down to the numbers in the **Current ECM Part Number** column in **Table A** on the next two pages.

- If there is a match, this bulletin applies. Continue with the reprogramming procedure.
- If there is not a match, this bulletin does not apply. Close C-III plus and refer to ASIST for further diagnostic information.

Table A

Model	Current ECM Part Number: 23710-
2010-2011 FX50	1WX0A, 1WX0B, 1WX1A, 1WX1B, 1WX2A, 1WX2B, 1WX3A, 1WX3B 3FY4A, 3FY4B, 3FY5A, 3FY5B, 3FY8A, 3FY9A 1WX0C, 1WX1C, 1WX2C, 1WX3C 1WX0D, 1WX1D, 1WX2D, 1WX3D
2012 FX50	3EU0A, 3EU1A
2010 G37 Sedan	1MW0A, 1MW1A, 1MW2A, 1MW3A, 1MW6A, 1MW7A 1MW0B, 1MW1B, 1MW2B, 1MW3B, 1MW6B, 1MW7B 1MW0C, 1MW1C, 1MW2C, 1MW3C, 1MW6C, 1MW7C 1MW0D, 1MW1D, 1MW2D, 1MW3D, 1MW6D, 1MW7D 1NS0A, 1NS1A, 1NS2A, 1NS3A, 1NS4A, 1NS5A, 1NS6A, 1NS7A 1NS0B, 1NS1B, 1NS2B, 1NS3B, 1NS4B, 1NS5B, 1NS6B, 1NS7B 1NS0C, 1NS1C, 1NS2C, 1NS3C, 1NS4C, 1NS5C, 1NS6C, 1NS7C 1NS0D, 1NS1D, 1NS2D, 1NS3D, 1NS4D, 1NS5D, 1NS6D, 1NS7D 1NS0E, 1NS1E, 1NS2E, 1NS3E, 1NS4E, 1NS5E, 1NS6E, 1NS7E 3WP0A, 3WP1A 3WP0B, 3WP1B
2010 G37 Coupe	1NG0A, 1NG1A, 1NG2A, 1NG3A, 1NG5A, 1NG6A, 1NG7A, 1NG8A 1NG0B, 1NG1B, 1NG2B, 1NG3B, 1NG5B, 1NG6B, 1NG7B, 1NG8B 1NG0C, 1NG1C, 1NG2C, 1NG3C, 1NG5C, 1NG6C, 1NG7C, 1NG8C 1NG0D, 1NG1D, 1NG2D, 1NG3D, 1NG5D, 1NG6D, 1NG7D, 1NG8D 1NG0E, 1NG1E, 1NG2E, 1NG3E, 1NG5E, 1NG6E, 1NG7E, 1NG8E 1PX0A, 1PX1A, 1PX2A, 1PX3A, 1PX7A, 1PX8A 1PX0B, 1PX1B, 1PX2B, 1PX3B, 1PX7B, 1PX8B 1PX0C, 1PX1C, 1PX2C, 1PX3C, 1PX7C, 1PX8C 1PX0D, 1PX1D, 1PX2D, 1PX3D, 1PX7D, 1PX8D 3WP3A, 3WP3B 3WP2A, 3WP2B
2011 G37 Sedan	1NX0A, 1NX1A, 1NX2A, 1NX3A, 1NX4A, 1NX6A, 1NX7A 1NX0B, 1NX1B, 1NX2B, 1NX3B, 1NX4B, 1NX6B, 1NX7B 1NX1C, 1NX2C, 1NX3C, 1NX6C, 1NX7C 1NX0D
2011 G37 Coupe	1A32B, 1A32H 1A35B, 1A36B 1A36A 1VU0A, 1VU1A, 1VU2A, 1VU3A, 1VU4A, 1VU5A, 1VU6A, 1VU7A 1VU0B, 1VU1B, 1VU2B, 1VU3B, 1VU4B, 1VU5B, 1VU6B, 1VU7B 1VU1C, 1VU3C, 1VU6C, 1VU7C 1VU2D

Model	Current ECM Part Number: 23710-
2011 G37 Convertible	1NY0A, 1NY1A, 1NY2A, 1NY3A, 1NY4A, 1NY5A 1NY0B, 1NY1B, 1NY2B, 1NY3B, 1NY4B, 1NY5B 1NY1C, 1NY2C, 1NY3C 1NY0D
2012 G37 Sedan	EY00A, EY01A, EY02A, EY03A, EY04A, EY05A, EY06A EY00B, EY01B, EY02B, EY03B, EY04B, EY05B, EY06B
2012 G37 Coupe	1A34C, 1A34D 1A37A, 1A37B 1JT0A, 1JT1A, 1JT2A, 1JT3A, 1JT4A, 1JT5A, 1JT6A 1JT0B, 1JT1B, 1JT2B, 1JT3B, 1JT4B, 1JT5B, 1JT6B
2012 G37 Convertible	1VZ0A, 1VZ1A, 1VZ2A, 1VZ3A, 1VZ4A 1VZ0B, 1VZ1B, 1VZ2B, 1VZ3B, 1VZ4B
2011 M37	1MA0A, 1MA1A, 1MA2A, 1MA3A, 1MA4A 1MA5A, 1MA6A, 1MA7A, 1MA8A, 1MA9A 1MA0B, 1MA1B, 1MA2B, 1MA3B, 1MA4B, 1MA5B 1MA0C, 1MA1C, 1MA2C, 1MA3C, 1MA4C, 1MA5C 1MA0D, 1MA1D, 1MA2D, 1MA3D, 1MA4D, 1MA5D 1MA1E, 1MA2E, 1MA3E, 1MA4E, 1MA5E 1MB7A, 1MB8A, 1MB9A
2012 M37	1MV0A, 1MV1A, 1MV2A, 1MV3A, 1MV4A, 1MV5A MV0B, 1MV1B, 1MV2B, 1MV3B, 1MV4B, 1MV5B 1MV0C, 1MV1C, 1MV2C, 1MV3C, 1MV4C, 1MV5C
2011 M56	1MX0A, 1MX1A, 1MX2A, 1MX3A, 1MX4A, 1MX5A 1MX0B, 1MX1B, 1MX2B, 1MX3B, 1MX4B, 1MX5B 1MX0C, 1MX1C, 1MX2C, 1MX3C, 1MX4C, 1MX5C 1MX0D, 1MX1D, 1MX2D, 1MX3D, 1MX4D, 1MX5D 1MX0E, 1MX1E, 1MX2E, 1MX3E, 1MX4E, 1MX5E 1MP4A, 1MP5A, 1MP6A, 1MP7A, 1MP8A, 1MP9A 1MP4B, 1MP5B, 1MP6B, 1MP7B, 1MP8B, 1MP9B 1MP4C, 1MP5C, 1MP6C, 1MP7C, 1MP8C, 1MP9C 1MP4D, 1MP5D, 1MP6D, 1MP7D, 1MP8D, 1MP9D
2012 M56	1MU0A, 1MU1A, 1MU2A, 1MU3A, 1MU4A, 1MU5A 1MU0B, 1MU1B, 1MU2B, 1MU3B, 1MU4B, 1MU5B 1MU0C, 1MU1C, 1MU2C, 1MU3C, 1MU4C, 1MU5C 1MU0D, 1MU1D, 1MU2D, 1MU3D, 1MU4D, 1MU5D 1MU0E, 1MU1E, 1MU2E, 1MU3E, 1MU4E, 1MU5E 1MK0A, 1MK1A, 1MK2A, 1MK3A, 1MK4A, 1MK5A 1MK0B, 1MK1B, 1MK2B, 1MK3B, 1MK4B, 1MK5B
2011 QX56	1LA3B, 1LA4B, 1LA5B, 1LA6B 1LA3C, 1LA4C, 1LA5C, 1LA6C 1LA3D, 1LA4D, 1LA5D, 1LA6D 1LA3E, 1LA4E, 1LA5E, 1LA6E 1LS0A, 1LS1A, 1LS2A, 1LS3A 1LS0B, 1LS1B, 1LS2B, 1LS3B 1LS0C, 1LS1C, 1LS2C, 1LS3C
2012 QX56	1ZS0A, 1ZS1A, 1ZS2A, 1ZS3A 1ZS0B, 1ZS1B, 1ZS2B, 1ZS3B 1ZS0C, 1ZS1C, 1ZS2C, 1ZS3C 1ZS0D, 1ZS1D, 1ZS2D, 1ZS3D 1ZS0E, 1ZS1E, 1ZS2E, 1ZS3E 1YN0A, 1YN1A, 1YN2A, 1YN3A

7. Follow the on-screen instructions to navigate C-III plus and reprogram the ECM.

**NOTE:**

- In some cases, more than one new P/N for reprogramming is available.
  - In this case, the screen in Figure 3 displays.
  - Select and use the reprogramming option that **does not** have the message “Caution! Use ONLY with ITBXX-XXX”.
- If you get this screen and it is blank (no reprogramming listed), it means there is no reprogramming available for this vehicle. Close C-III plus and refer back to ASIST for further diagnosis.

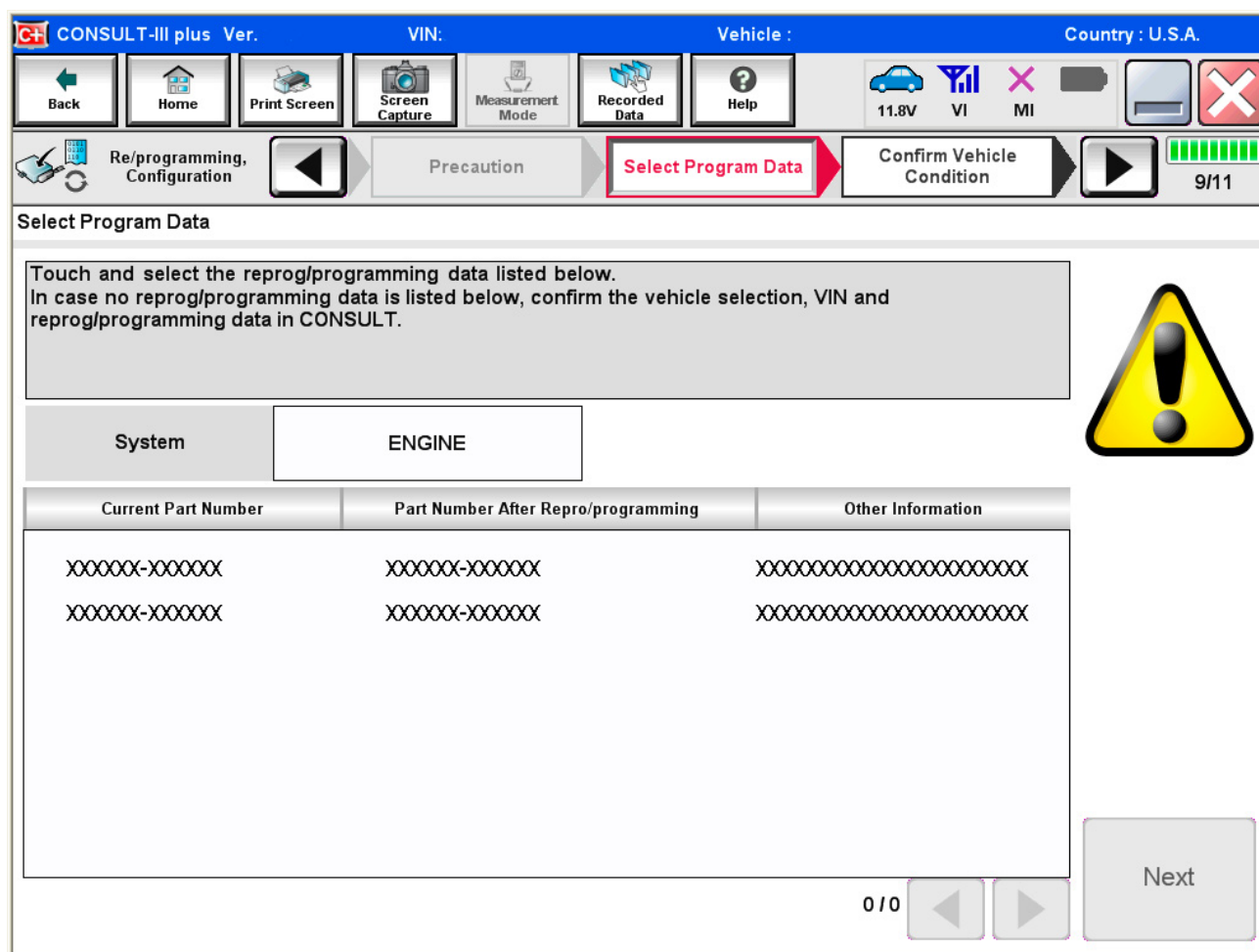


Figure 3

8. When the screen in Figure 4 displays, reprogramming is complete.

**NOTE:** If the screen in Figure 4 does not display (reprogramming does not complete), refer to the information on page 9.

9. Disconnect the battery charger from the vehicle.

10. Select **Next**.

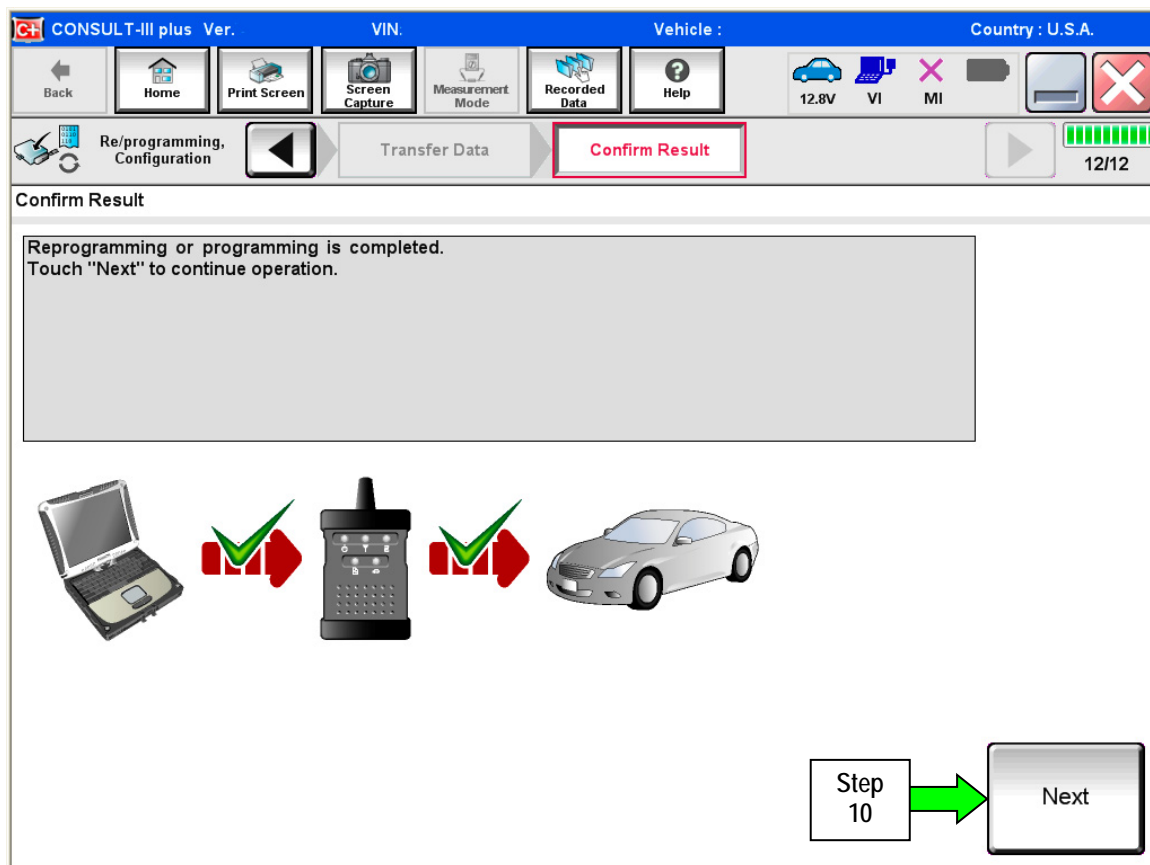


Figure 4

**NOTE:**

- In the next steps, starting on page 10, you will perform Throttle Valve Closed Position, Idle Air Volume Learn, Accelerator Closed Position, and DTC erase.
- These operations are required before C-III plus will provide the final reprogramming confirmation report.



## ECM recovery:

Do not disconnect plus VI or shut down CONSULT III plus if reprogramming does not complete.

If reprogramming does not complete and the “!?” icon displays as shown in Figure 5:

- Check battery voltage (12.0–15.5 V).
- Ignition is ON, engine OFF.
- External Bluetooth® devices are OFF.
- All electrical loads are OFF.
- **Select retry and follow the on screen instructions.**
- “Retry” may not go through on first attempt and can be selected more than once.

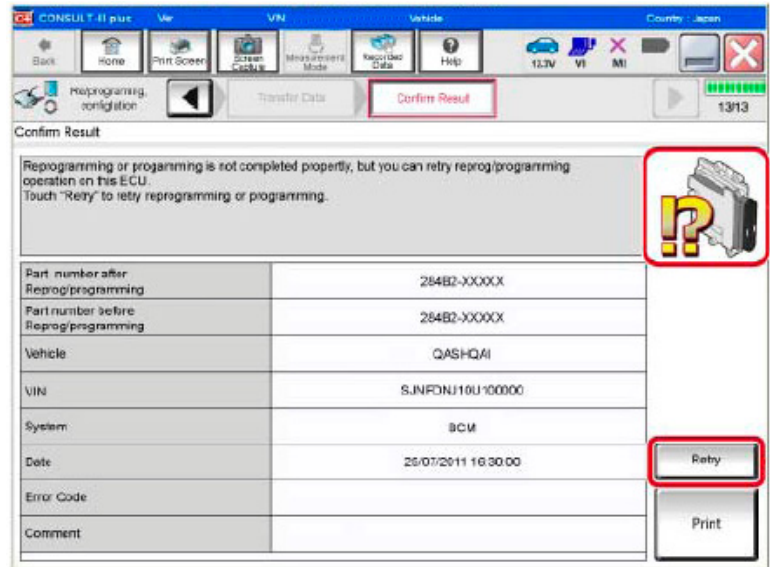


Figure 5

If reprogramming does not complete and the “X” icon displays as shown in Figure 6:

- Check battery voltage (12.0 – 15.5 V).
- CONSULT A/C adapter is plugged in.
- Ignition is ON, engine OFF.
- Transmission is in Park.
- All C-III plus / VI cables are securely connected.
- All C-III plus updates are installed.
- **Select Home, and restart the reprogram procedure from the beginning.**

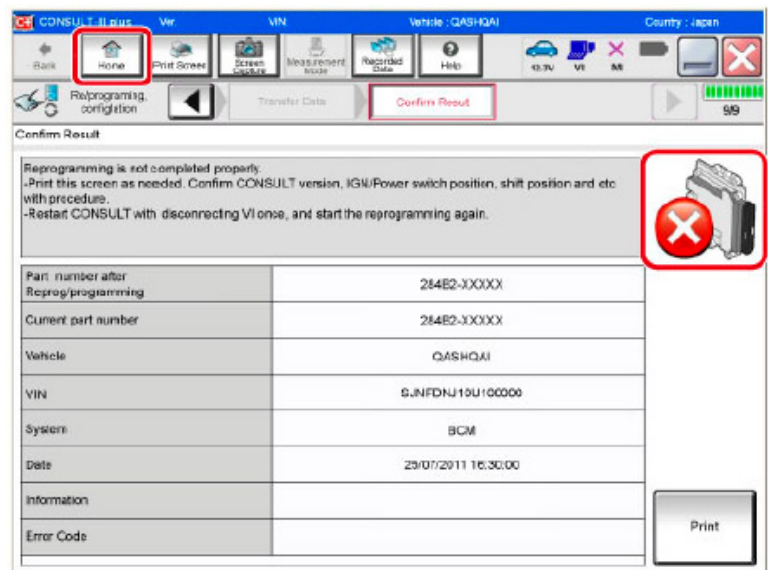


Figure 6

11. Follow the on-screen instructions to perform the following:

- **Throttle Valve Closed Position**
- **Idle Air Volume Learn (IAVL)**

**NOTE:**

- Listed below are common conditions required for IAVL to complete.
- If IAVL does not complete within a few minutes, a condition may be out of range.
- Refer to the appropriate Electronic Service Manual (ESM) for specific conditions required for the vehicle you are working on.
  - Engine coolant temperature: 70 -105° C (158 -221°F)
  - Battery voltage: More than 12.9V (At idle)
  - Selector lever: P or N
  - Electric load switch: OFF (Air conditioner, headlamp, rear window defogger)
  - Steering wheel: Neutral (Straight-ahead position)
  - Vehicle speed: Stopped
  - Transmission: Warmed up
- **Accelerator Pedal Close Position Learning**
- **Erase DTCs**

Continue to the next page.

12. When the entire reprogramming process is complete, the screen in Figure 7 will display.
13. Verify the before and after part numbers are different.
14. Print a copy of this screen (Figure 7) and attach it to the repair order for warranty documentation.
15. Select **Confirm**.

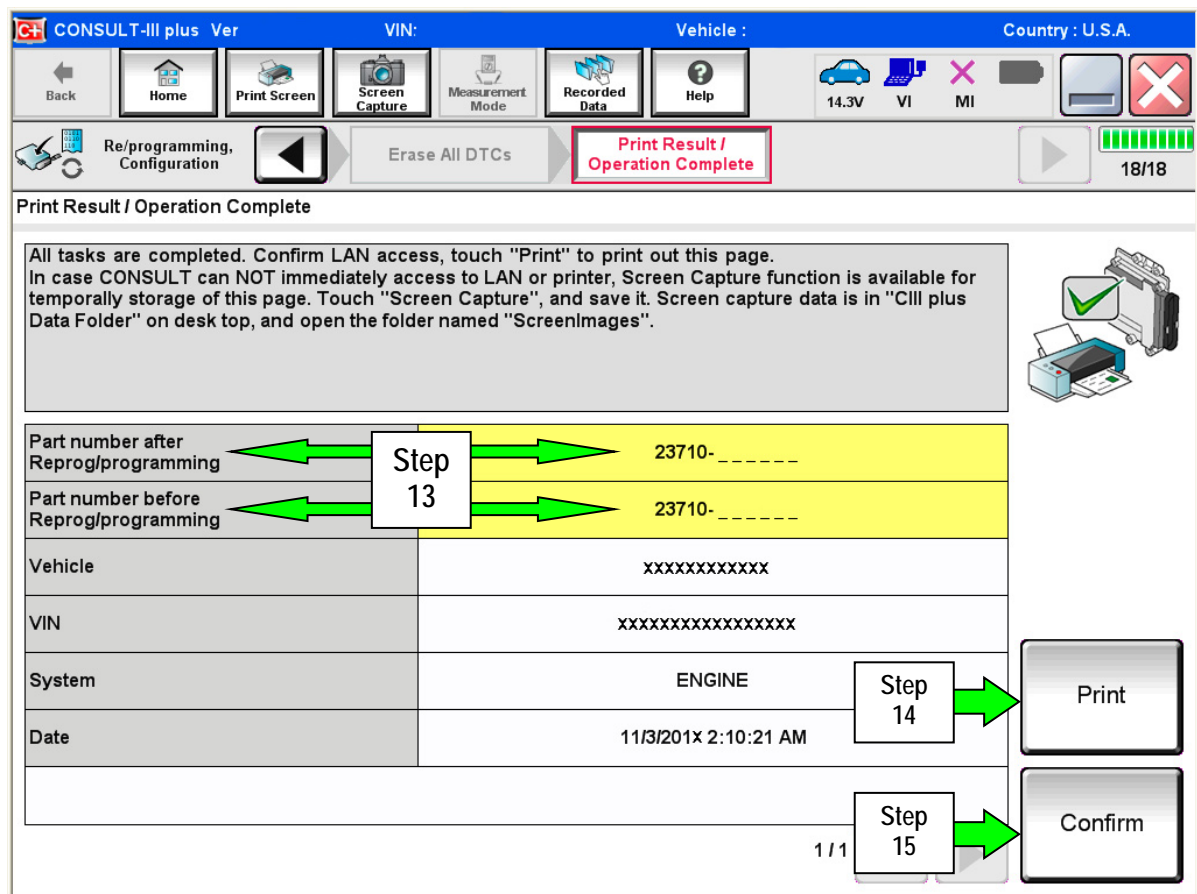


Figure 7

16. Close C-III plus.
17. Turn the ignition OFF.
18. Disconnect the plus VI from the vehicle.
19. Test drive the vehicle and make sure it operates correctly and the MIL is OFF.
  - If the MIL comes ON, go back to ASIST for further diagnostic information.
  - Diagnosis and repairs beyond ECM reprogramming are not covered by this bulletin.

## CLAIMS INFORMATION

Submit a Primary Part (PP) type line claim using the following claims coding:

DESCRIPTION	PFP	OP CODE	SYM	DIA	FRT
Reprogram Engine Control Module	(1)	DE97AA	ZE	32	(2) (3)

- (1) Reference the Repair Order and use the current ECM P/N written down in step 6 of the **SERVICE PROCEDURE** as the PFP.
- (2) Reference the current Infiniti Warranty Flat Rate Manual and use the indicated FRT.
- (3) FRT allows adequate time to access DTC codes and reprogram ECM. No other diagnostic procedures subsequently required. Do NOT claim any Diagnostic Op Codes with this claim.

