

Classification:

Reference:

Date:

PD15-002a

ITB16-007a

January 28, 2016

## JX35, QX60 AND QX60 HYBRID; REVISED REAR FINAL DRIVE ASSEMBLY SPECIFICATION

This bulletin has been amended. The APPLIED VEHICLES section has been revised.  
Please discard previous versions of this bulletin.

**APPLIED VEHICLES:**  
 2013 JX35 (L50)  
 2014-2015 QX60 (L50)  
 2014-2015 QX60 Hybrid (L50)

### SERVICE INFORMATION

On Applied Vehicles, the torque specification for the rear final drive assembly rear mounting stud has been revised.

**New torque specification: 71 N-m, 7.2 kg-m, 52 ft-lbs**

Use the torque specification shown above when installing a rear final drive assembly.

At a later date and where possible, the applicable Electronic Service Manuals will be updated with the revised specification.

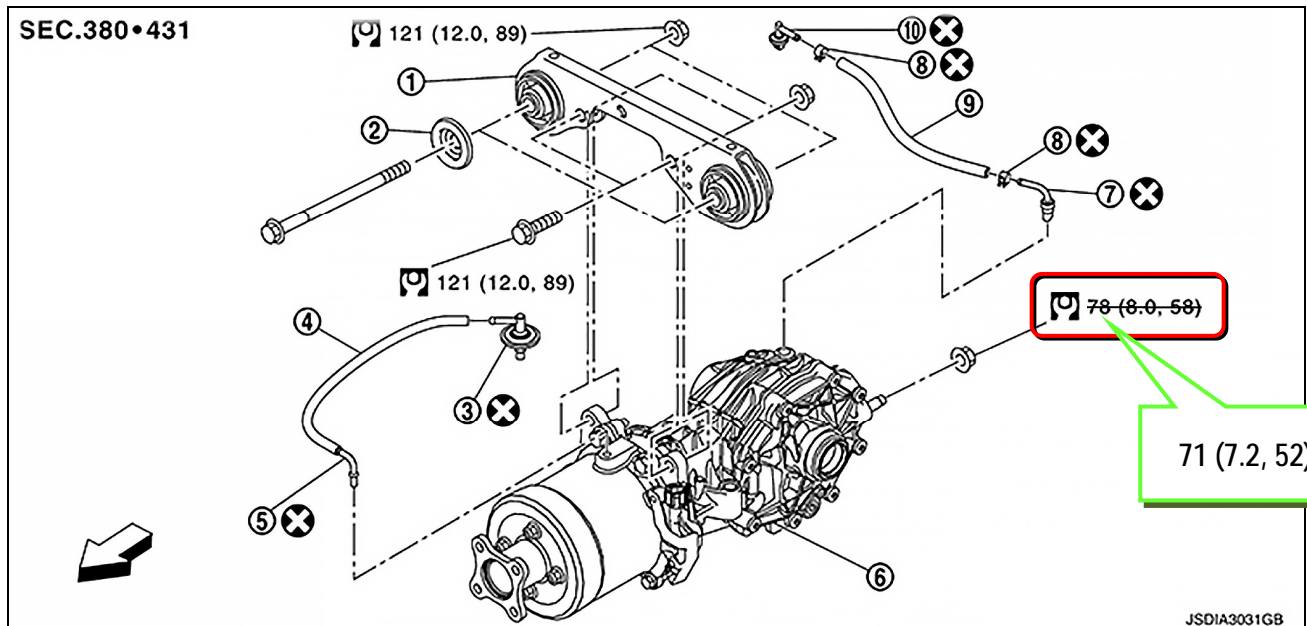


Figure 1

Infiniti Bulletins are intended for use by qualified technicians, not 'do-it-yourselfers'. Qualified technicians are properly trained individuals who have the equipment, tools, safety instruction, and know-how to do a job properly and safely. **NOTE:** If you believe that a described condition may apply to a particular vehicle, DO NOT assume that it does. See your Infiniti dealer to determine if this applies to your vehicle.