



SERVICE BULLETIN

Classification: PD15-001a	Reference: NTB16-005a	Date: January 28, 2016
------------------------------	--------------------------	---------------------------

PATHFINDER AND PATHFINDER HYBRID; REVISED REAR FINAL DRIVE ASSEMBLY SPECIFICATION

This bulletin has been amended. The APPLIED VEHICLES section has been revised. Please discard previous versions of this bulletin.

APPLIED VEHICLES: 2013-2016 Pathfinder (R52)
2014 Pathfinder Hybrid (R52)

SERVICE INFORMATION

On Applied Vehicles, the torque specification for the rear final drive assembly rear mounting stud has been revised.

New torque specification: 71 N-m, 7.2 kg-m, 52 ft-lbs

Use the torque specification shown above when installing a rear final drive assembly.

At a later date and where possible, the applicable Electronic Service Manuals will be updated with the revised specification.

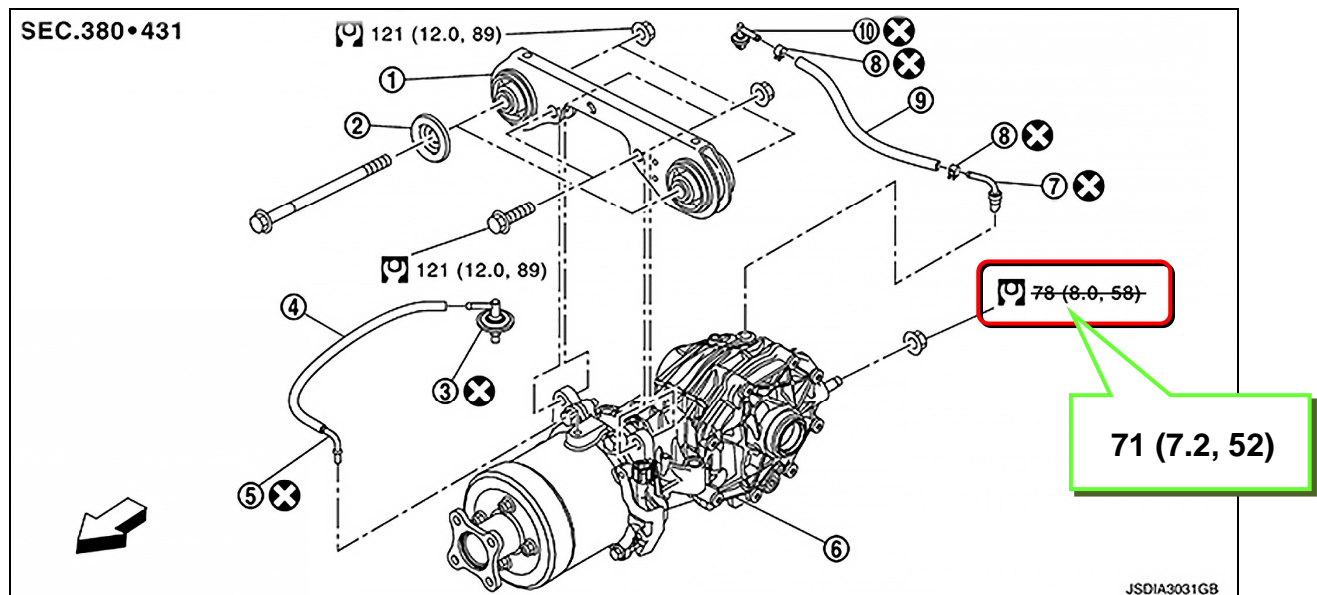


Figure 1

Nissan Bulletins are intended for use by qualified technicians, not 'do-it-yourselfers'. Qualified technicians are properly trained individuals who have the equipment, tools, safety instruction, and know-how to do a job properly and safely. **NOTE:** If you believe that a described condition may apply to a particular vehicle, DO NOT assume that it does. See your Nissan dealer to determine if this applies to your vehicle.