

© 2016 Mazda Motor of America, Inc.

<b>Subject:</b> <b>WARNING LIGHT ON WITH DTC P1887:11 - 14 AND/OR NOISE FROM COUPLING UNIT</b>	<b>Bulletin No:</b> 03-004/16
	<b>Last Issued:</b> 09/09/2016

## APPLICABLE MODEL(S)/VINS

2013-2016 CX-5 AWD vehicles with VINs lower than JM3KE\*\*\*\*\*837718 (produced before July 1, 2016)

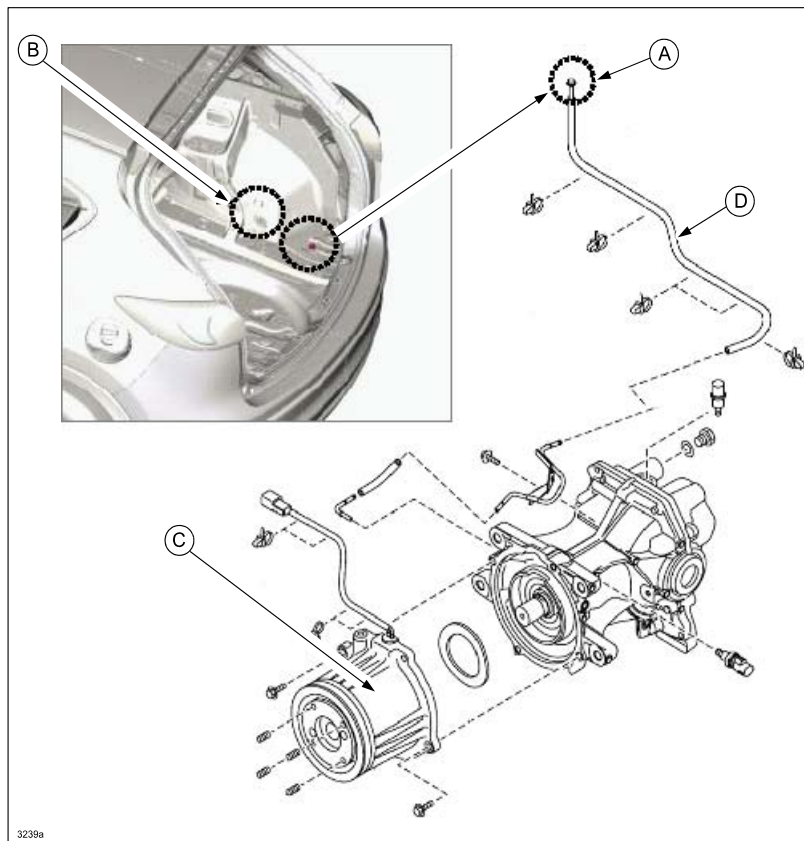
## DESCRIPTION

Some vehicles may exhibit either one or both of the following concerns:

- Noise from coupling unit while driving
- 4WD Warning Light ON with DTC P1887:11 – 14 stored in memory

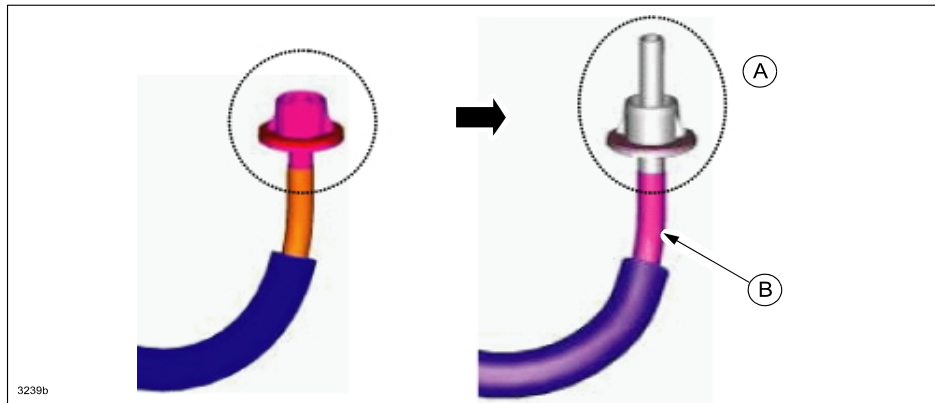
DTC P1887:11 – 14: Electronic 4WD Control System Wiring System Failure

The breather pipe grommet (A), located in the trunk, may be submerged in water that penetrated through the rear ABS wheel-speed sensor harness grommet (B) during a high pressure car wash. The water then enters the coupling unit (C) through the breather pipe (D). This creates rust inside the coupling unit, which causes internal wiring harness damage, setting the DTC and/or the coupling unit noise due to increased rotational resistance.



**CONSUMER NOTICE:** The information and instructions in this bulletin are intended for use by skilled technicians. Mazda technicians utilize the proper tools/equipment and take training to correctly and safely maintain Mazda vehicles. These instructions should not be performed by "do-it-yourselfers." Customers should not assume this bulletin applies to their vehicle or that their vehicle will develop the described concern. To determine if the information applies, customers should contact their nearest authorized Mazda dealership. Mazda North American Operations reserves the right to alter the specifications and contents of this bulletin without obligation or advance notice. All rights reserved. No part of this bulletin may be reproduced in any form or by any means, electronic or mechanical---including photocopying and recording and the use of any kind of information storage and retrieval system ---without permission in writing.

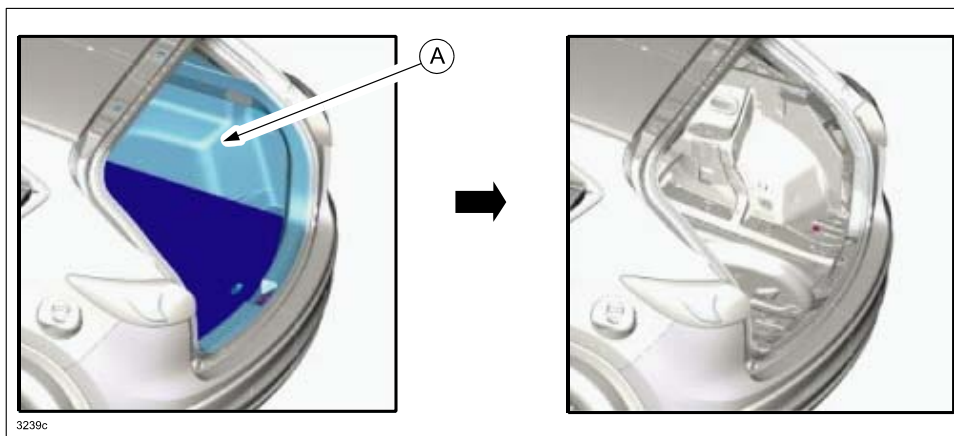
The configuration of the breather pipe grommet (A) has been changed to prevent water from entering the breather pipe (B), even if water accumulates in the trunk.



Customers having this concern should have their vehicle repaired using the following repair procedure.

## REPAIR PROCEDURE

1. Verify the customer concern(s):
  - Noise from the coupling unit
  - DTC P1887:11-14 stored in memory
  - If either one (or both) of the above is “Yes”, go to the next step.
  - If both of the above is “No”, this service information is not applicable. Refer to the instructions on MS3 online for further troubleshooting procedures.
2. Remove the (RH) trunk side trim (A), according to the instructions on MS3 online (TRUNK SIDE TRIM REMOVAL/INSTALLATION).



3. Check inside the trunk around the breather pipe grommet (A) for traces of water/moisture.

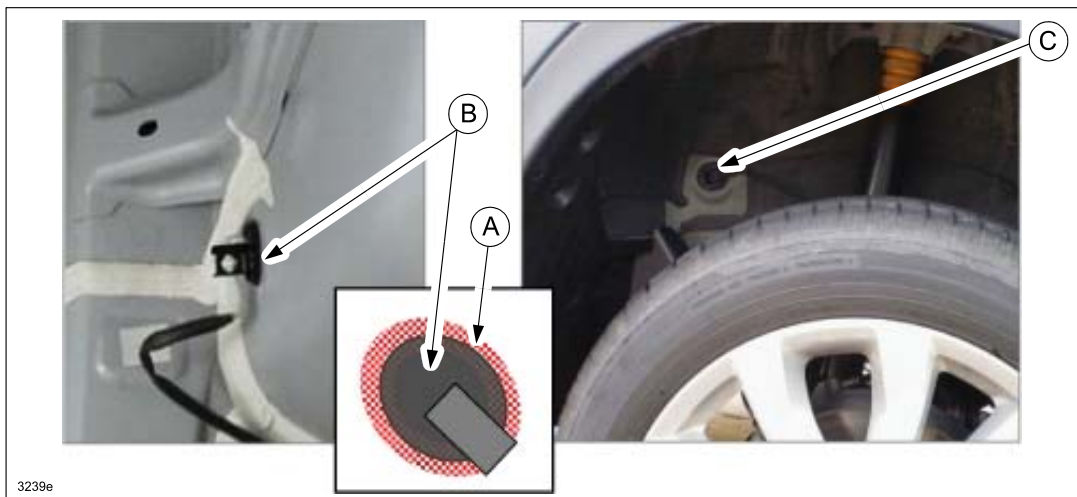


- If there is any trace of water/moisture around the breather pipe grommet, go to the next step.
- If there is no trace of water/moisture around the breather pipe grommet, this service information is not applicable. Refer to the instructions on MS3 online for further troubleshooting procedures.

4. Remove and dry any existing water/moisture from the area.

5. Apply butyl tape (A) around the ABS wheel-speed sensor harness grommet (B) to seal between the grommet and the body panel.

**NOTE:** This step prevents water from penetrating through the ABS sensor grommet (C) during high pressure car washing around the rear wheel arch.

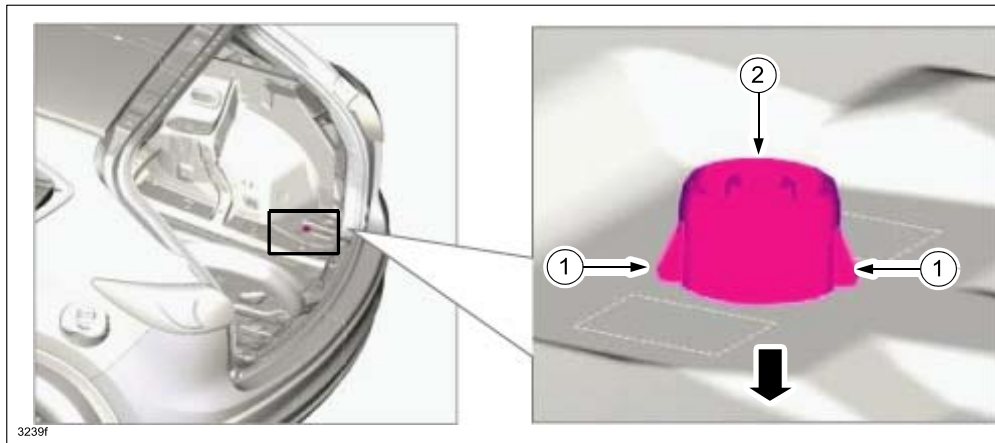


6. Replace the rear differential with a new one according to the instructions on MS3 online (REAR DIFFERENTIAL REMOVAL/INSTALLATION).

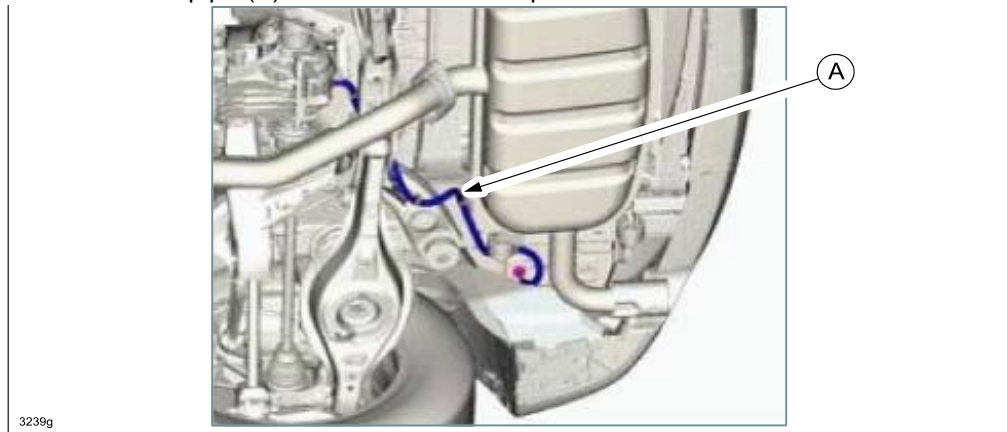
**NOTE:** Rear differential replacement requires MASH approval.

7. Replace the breather pipe:

- a. While squeezing the side locks (1), push the grommet downward (2) to remove it from the body panel.



- b. Replace the breather pipe (A) with a new modified part.

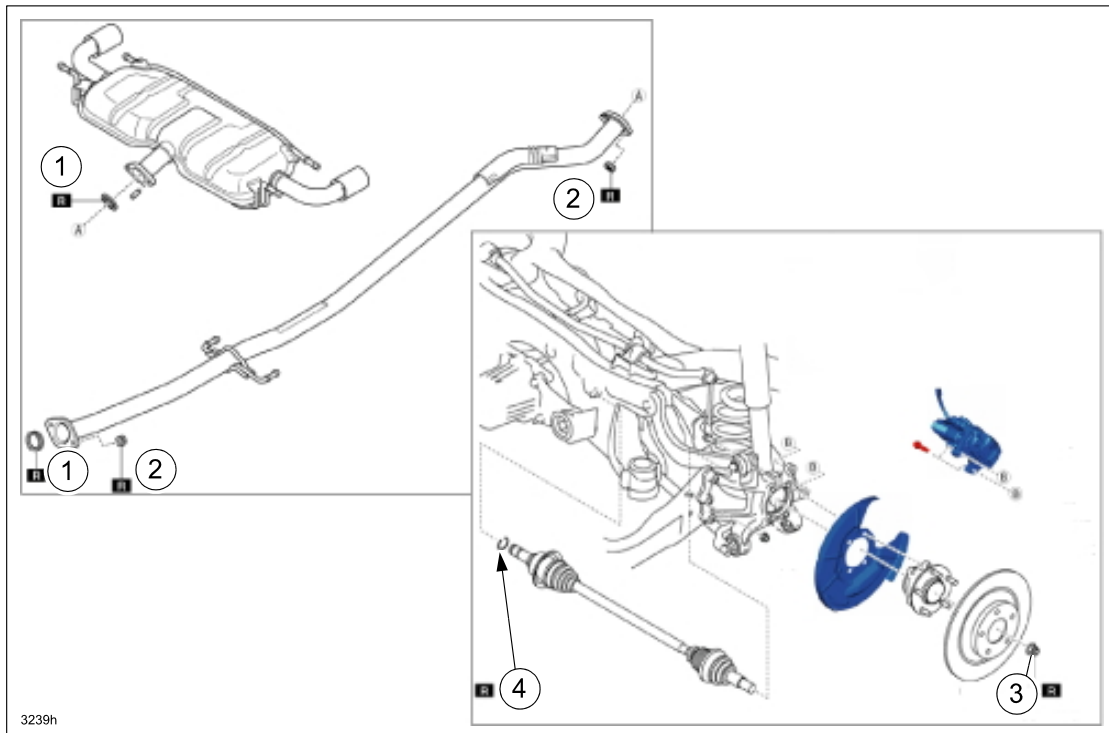


- c. Firmly attach the grommet (with the side locks) to the body panel.
8. Reinstall the (RH) trunk side trim and other parts according to the instructions on MS3 online (TRUNK SIDE TRIM REMOVAL/INSTALLATION).
9. Verify the repair.

## PART(S) INFORMATION

No.	Part Number	Description	Qty.	Notes
---	KE02-27-090	Breather Pipe	1	---
---	KAT1-27-020A	Rear Differential	1	Requires MASH approval
1	PE23-40-305	Gasket, Middle Pipe (Converter)	2	Replace
2	9994-61-000	Lock Nut, Middle Pipe (Converter)	4	Replace
3	D651-33-042A	Nut	2	Replace
4	RTA1-25-421	C-Clip	2	Replace

### Replacement Parts Location:



## WARRANTY INFORMATION

**NOTE:**

- This warranty information applies only to verified customer complaints on vehicles eligible for warranty repair.
- This repair will be covered under Mazda's Powertrain Limited Warranty term 5 years / 60,000 miles.
- Additional diagnostic time cannot be claimed for this repair.

Warranty Type	A
Symptom Code	82
Damage Code	9Y
Part Number Main Cause	KE02-27-090
Quantity	1
Operation Number / Labor Hours:	XXM5KARX / 3.3 Hrs. (without Electric Parking Brake) XXM5LARX / 3.4 Hrs. (with Electric Parking Brake)

**NOTE:** Rear differential replacement requires MASH approval.