

© 2016 Mazda Motor of America, Inc.

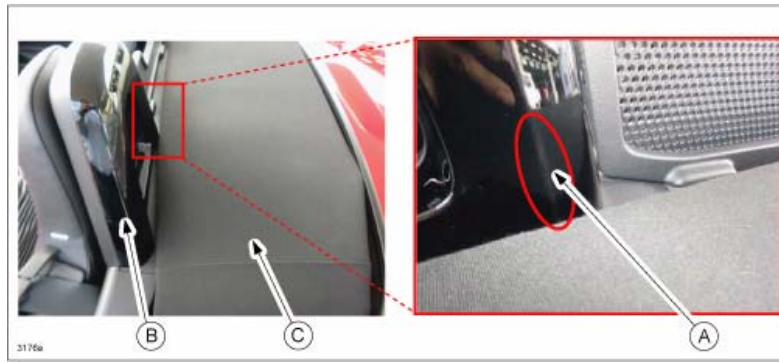
Subject: SCRATCH ON SEAT BACK BAR GARNISH FROM CONTACT WITH CONVERTIBLE TOP	Bulletin No: 09-018/16
	Last Issued: 03/21/2016

APPLICABLE MODEL(S)/VINS

2016 MX-5

DESCRIPTION

Some vehicles may exhibit scratches (A) on the rear of the seat back bar garnish (B) from contact with the convertible top (C).



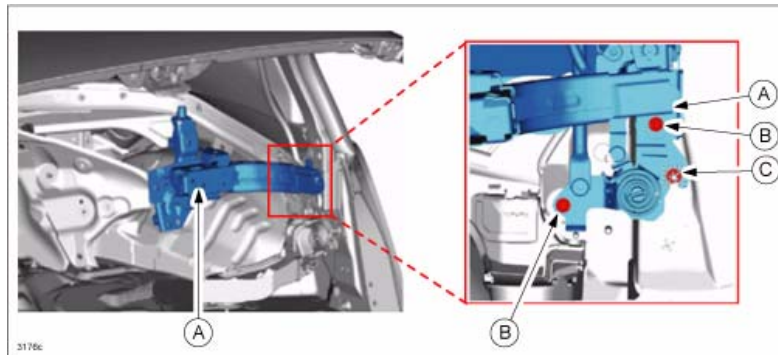
Due to assembly variations, the clearance between the seat back bar garnish and the convertible top is too small on some vehicles.



Customers having this concern should have their vehicle repaired using the following repair procedure.

REPAIR PROCEDURE

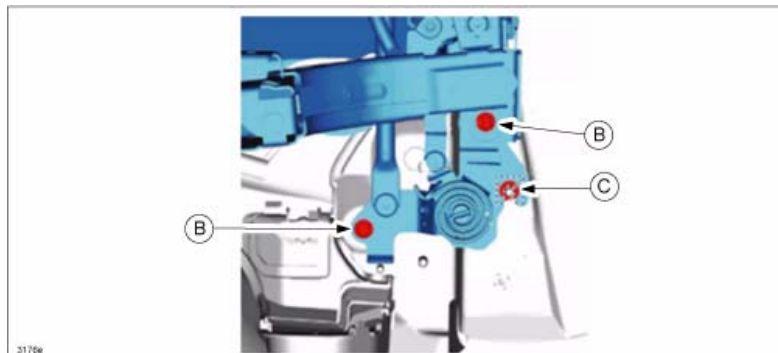
1. Verify customer concern.
2. Remove the seat back crossmember assembly from the vehicle according to the instructions on MS3 online or the Workshop Manual (section 09-10 SEAT BACK CROSSMEMBER ASSEMBLY REMOVAL/INSTALLATION).
3. Adjust the position of the link bracket (A) for both left and right sides.
 - a. Loosen the two bolts (B) and nut (C).



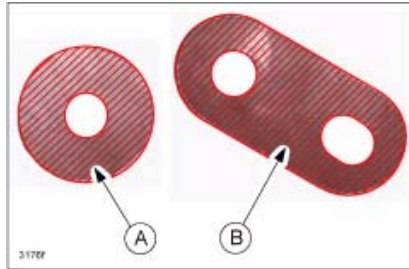
- b. Lift up the link bracket.



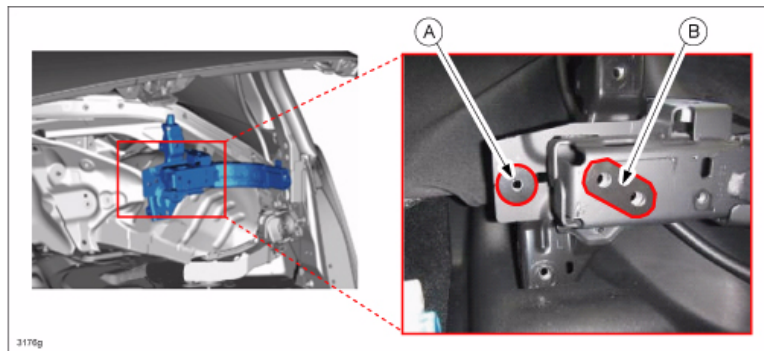
- c. Tighten the two bolts (B) and nut (C) of the link bracket while holding it up.
Tightening torque: 19-29 N•m (2.0-2.5 kgf•m, 15-18 ft•lbf)



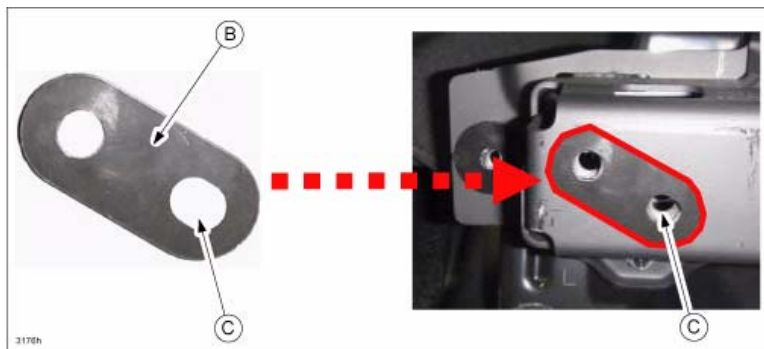
4. Attach the washers (N2Y0-R1-9YZ) to the link bracket for both left and right sides.
 - a. Apply a 3M Super Weatherstrip Adhesive or equivalent adhesive to the washers (A and B) as shown.



- b. Apply the washers (A and B) to the surface of the link bracket with the adhesive.



NOTE: Install washer B with the ellipsoid hole (C) placed as shown



5. Install the seat back crossmember assembly from the vehicle according to the instructions on MS3 online or the Workshop Manual (section 09-10 SEAT BACK CROSSMEMBER ASSEMBLY REMOVAL/INSTALLATION).
6. Install the removed parts in the reverse order of removal.
7. Verify repair.

PART(S) INFORMATION

Part Number	Description	Qty.	Notes
N243-69-732A	Garnish (R), Rear	1	Right side
N243-69-742A	Garnish (L), Rear	1	Left side
N2Y0-R1-9YZ	Repair Kit	1	4 Washers

WARRANTY INFORMATION

NOTE:

- This warranty information applies only to verified customer complaints on vehicles eligible for warranty repair.
- This repair will be covered under Mazda's New Vehicle Limited Warranty.
- Additional diagnostic time cannot be claimed for this repair.

Warranty Type	A
Symptom Code	90 (Interfere with other part)
Damage Code	9A (Damaged)
Part Number Main Cause / Qty.	N243-R1-210 / 0
Operation Number / Labor Hours:	XXM2TBRX / 1.3 Hrs.