

TECH TIP

Group:	0-GENERAL
Bulletin No:	TT-16-005
Issue Date:	3-17-2016

BRAKE SWITCH LOW POWER DIAGNOSIS

SUBJECT VEHICLES: 08MY-16MY (238, 258, 268, 338) Conventional Trucks or 13MY-16MY (155, 195) COE Trucks

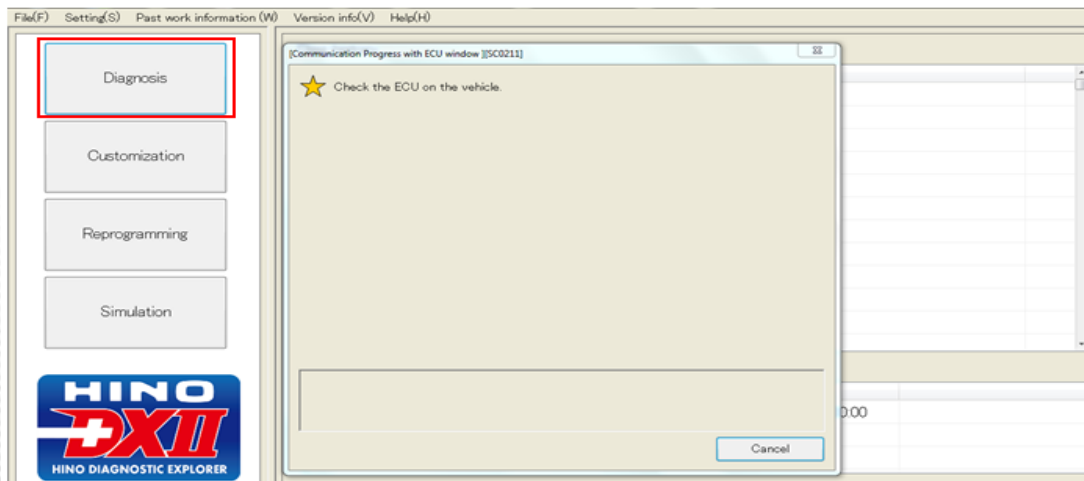
Note: This tech tip is provided as technical information and is not authorization for a warrantable repair.

OVERVIEW:

The purpose of the tech tip is to provide information for a low power concern possibly relating to the brake switch. Hino Trucks are equipped with two brake switches. First, a stop lamp switch that is designed to activate stop lamps on the truck. Second, a brake switch that is designed to send brake application input for modules to monitor brake activation. When monitoring DXII with the brake applied, the switches should both read ON and when the brake pedal is released, they should both read OFF. If the brake is not applied (typically when accelerating) and if one switch reads ON while the other reads OFF when the brake pedal is not applied, a brake switch correlation concern is the likely cause. Perform the following to identify the switch with this concern.

Note: When measuring with a meter across each switch, the stop lamp switch is an open circuit and brake switch is a closed circuit. However, in DXII the switch status is ON or OFF (brake pedal applied when ON or not applied when OFF).

1. The VIN # will populate in the window, select the correct vehicle depending on what you are working on from the drop down boxes. Place a check next to the “Engine” selection and select “Read Out”. Select “Diagnosis” on the left side of the screen.

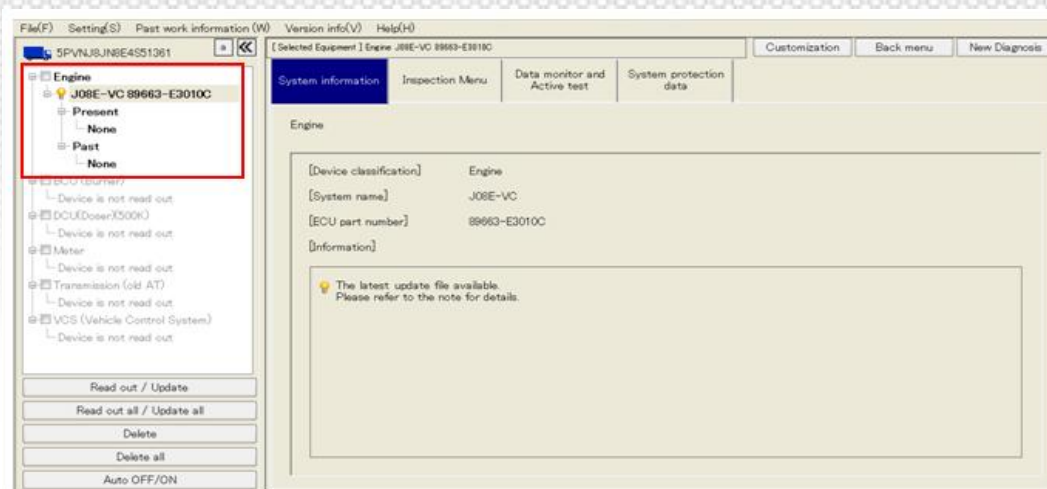


A Toyota Group Company

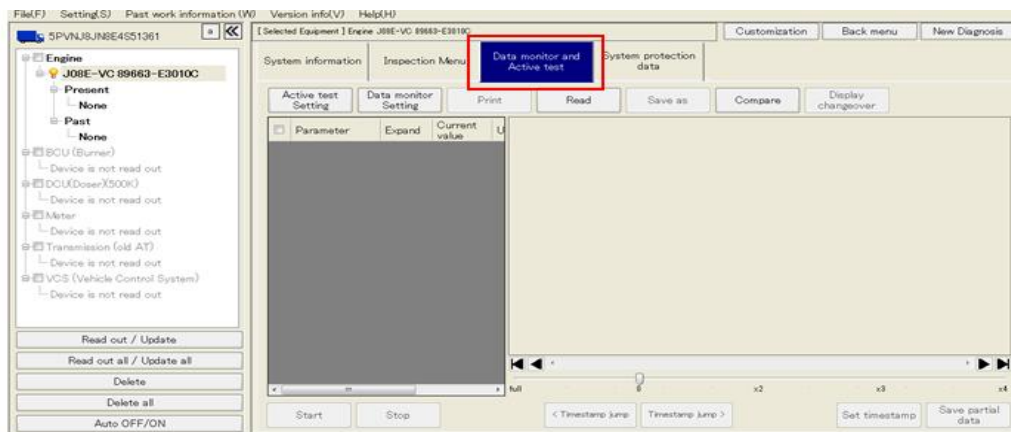
TECH TIP

Group:	0-GENERAL
Bulletin No:	TT-16-005
Issue Date:	3-17-2016

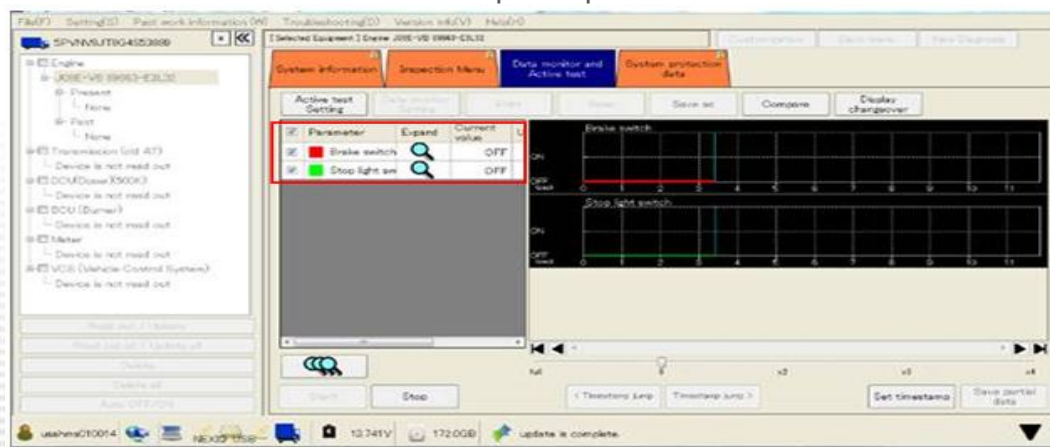
2. Select the “ECU” on the left side of the screen.



3. Select the “Data monitor and Active test” tab.



4. Select “Brake Switch” and the “Stop Lamp Switch” and start the monitor.

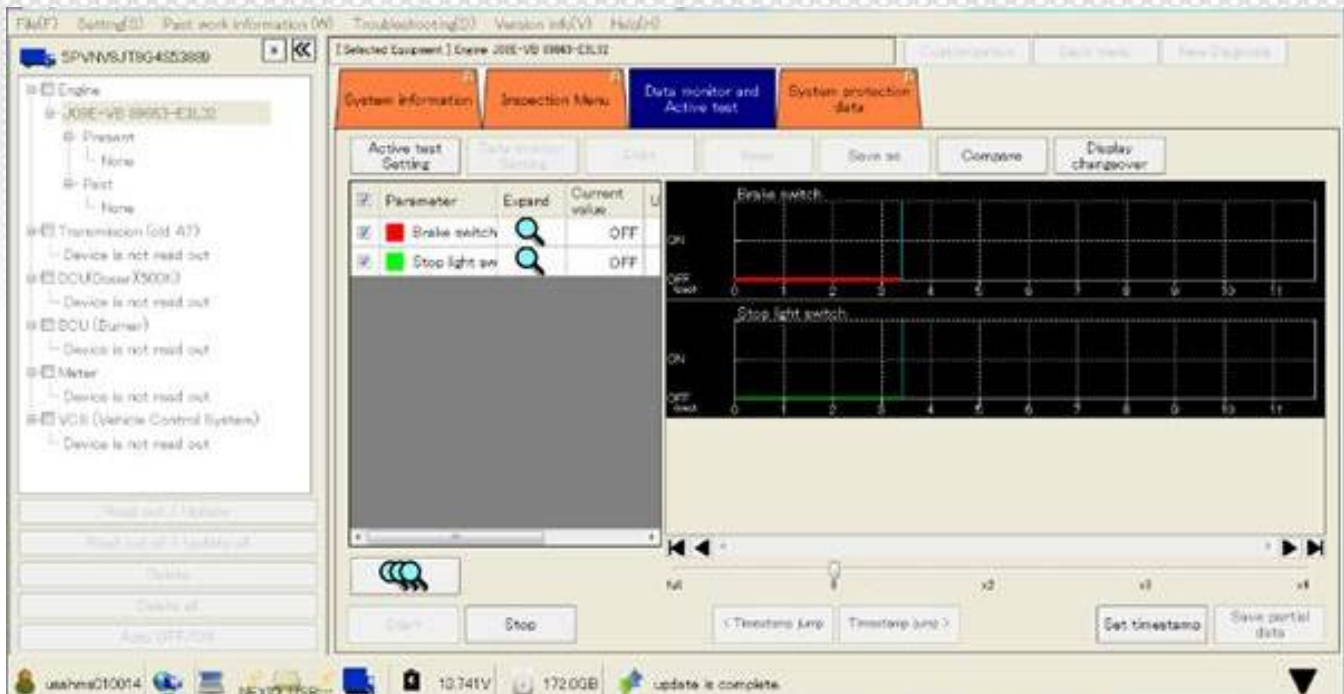


A Toyota Group Company

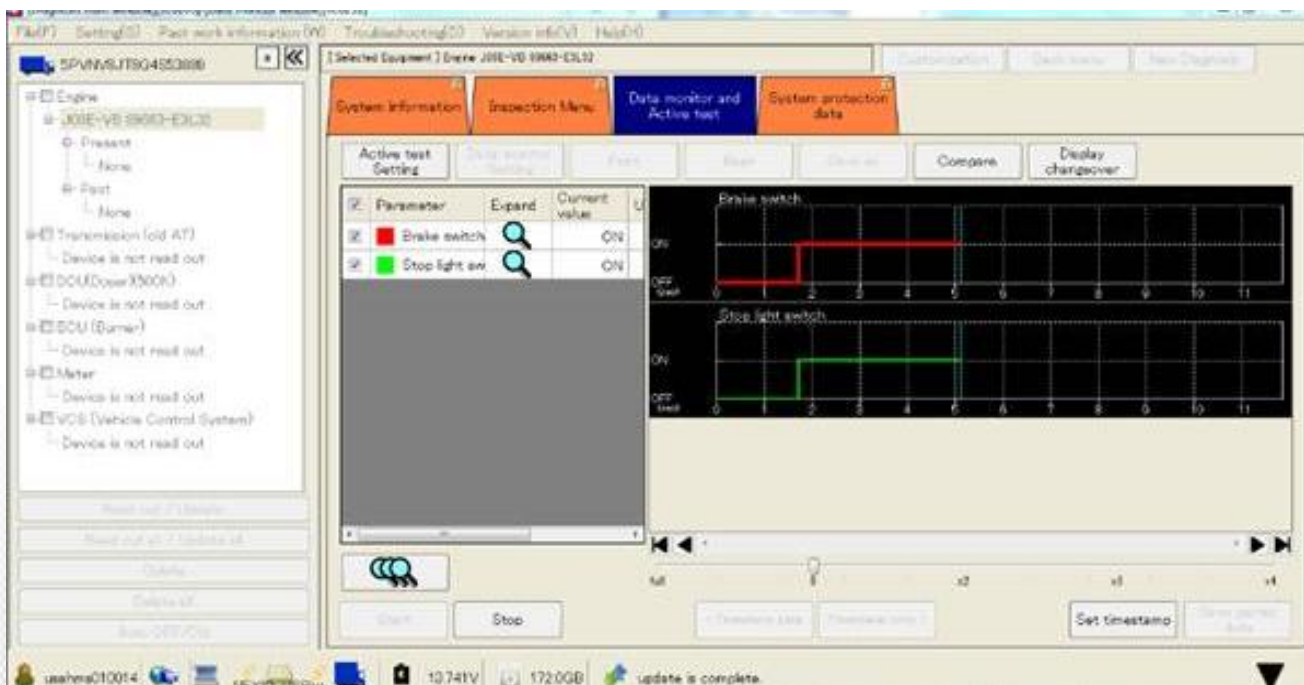
TECH TIP

Group:	0-GENERAL
Bulletin No:	TT-16-005
Issue Date:	3-17-2016

Normal When the Brake Pedal is Released – Both Switches read OFF



Normal When the Brake Pedal is Applied – Both Switches Read ON

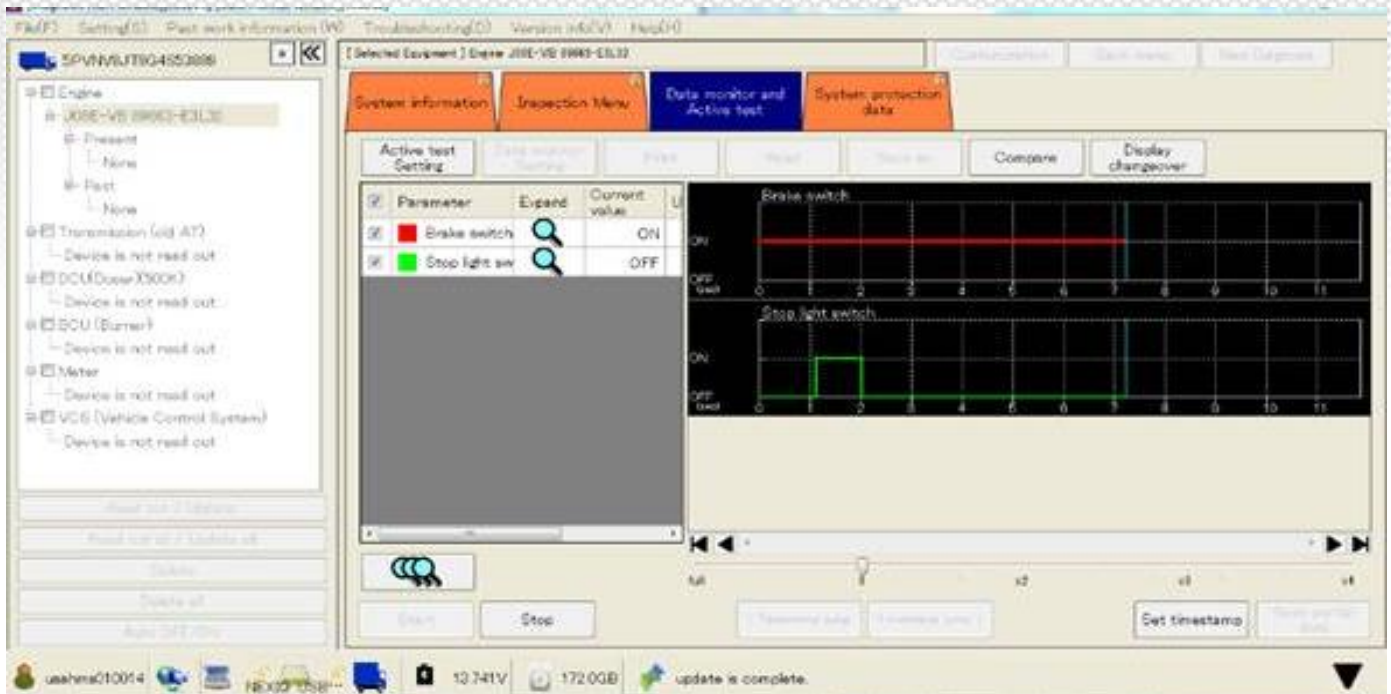


A Toyota Group Company

TECH TIP

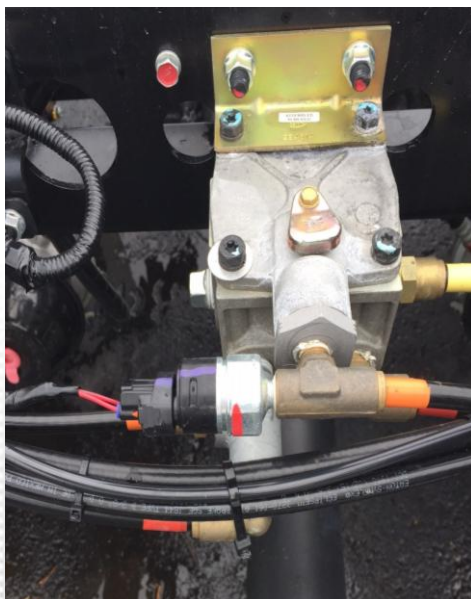
Group:	0-GENERAL
Bulletin No:	TT-16-005
Issue Date:	3-17-2016

No Brake Pedal Application – Abnormal Switch Reading, one or both switches read ON with no brake pedal application



5. Isolate the concern with the switch that reads ON when the brake pedal is not applied and make the necessary repair.

Note: When the truck is equipped with air brakes, the brake switch is on the frame rail.

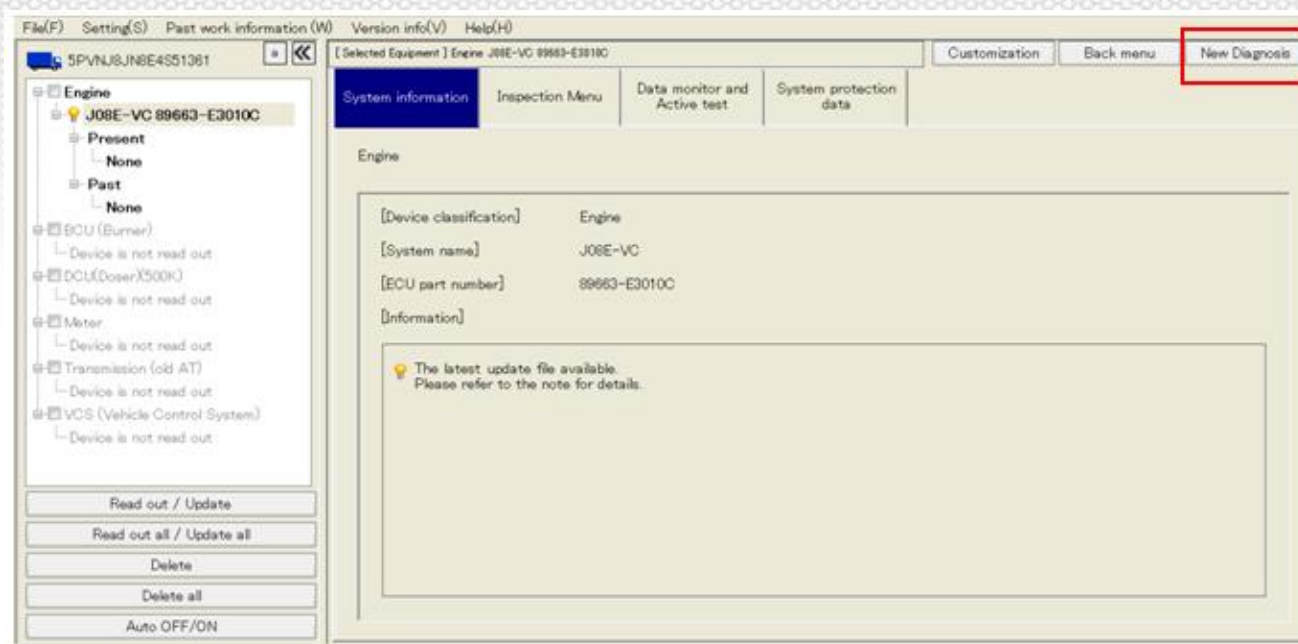


A Toyota Group Company

TECH TIP

Group:	0-GENERAL
Bulletin No:	TT-16-005
Issue Date:	3-17-2016

6. Select “New Diagnosis” and let the DX software fully disconnect from the truck before disconnecting the interface.



A Toyota Group Company