



GROUP  
ENG

MODEL  
2016MY  
Sorento (UMa)  
w/2.4L GDI

NUMBER  
154 (REV 1, 04/07/2015)

DATE  
February 2016

## TECHNICAL SERVICE BULLETIN

SUBJECT: VCM LOGIC IMPROVEMENT - DTC P200A00 (SA 220)

### ★ NOTICE

This bulletin has been revised to include additional information. New/revised sections of this bulletin are indicated by a black bar in the margin area.

This bulletin provides information related to the ECM software upgrade and inspection of the VCM motor of some 2016MY Sorento (UMa) vehicles, produced from November 17, 2014 through December 21, 2015, which may experience a malfunction indicator lamp (MIL) illuminated with the Electronic Control Module (ECM) system-related DTC; P200A00. To correct this condition, the ECM should be reprogrammed using the GDS/KDS download, as described in this bulletin, and, if necessary, replacement of the Variable Charge Motion Actuator (VCMA). Do not replace the intake manifold for this concern. Before performing this procedure, verify the VIN falls within the production ranges by consulting the table on page 8. For confirmation that the latest reflash has been performed to a vehicle you are working on, verify ROM ID using the tables in this TSB.

### DTC P200A00 - Intake Manifold Runner Performance

### ★ NOTICE

This reflash contains two (2) upgrade events which **MUST** be performed in sequence.

### ★ NOTICE

A Service Action is a repair program without customer notification that is performed during the warranty period. Any dealer requesting to perform this repair outside the warranty period will require DPSM approval.

Repair status for a VIN is provided on WebDCS (Service> Warranty Coverage> Warranty Coverage Inquiry> Campaign Information). Not completed Recall / Service Action reports are available on WebDCS (Consumer Affairs> Not Completed Recall> Recall VIN> Select Report), which includes a list of affected vehicles.

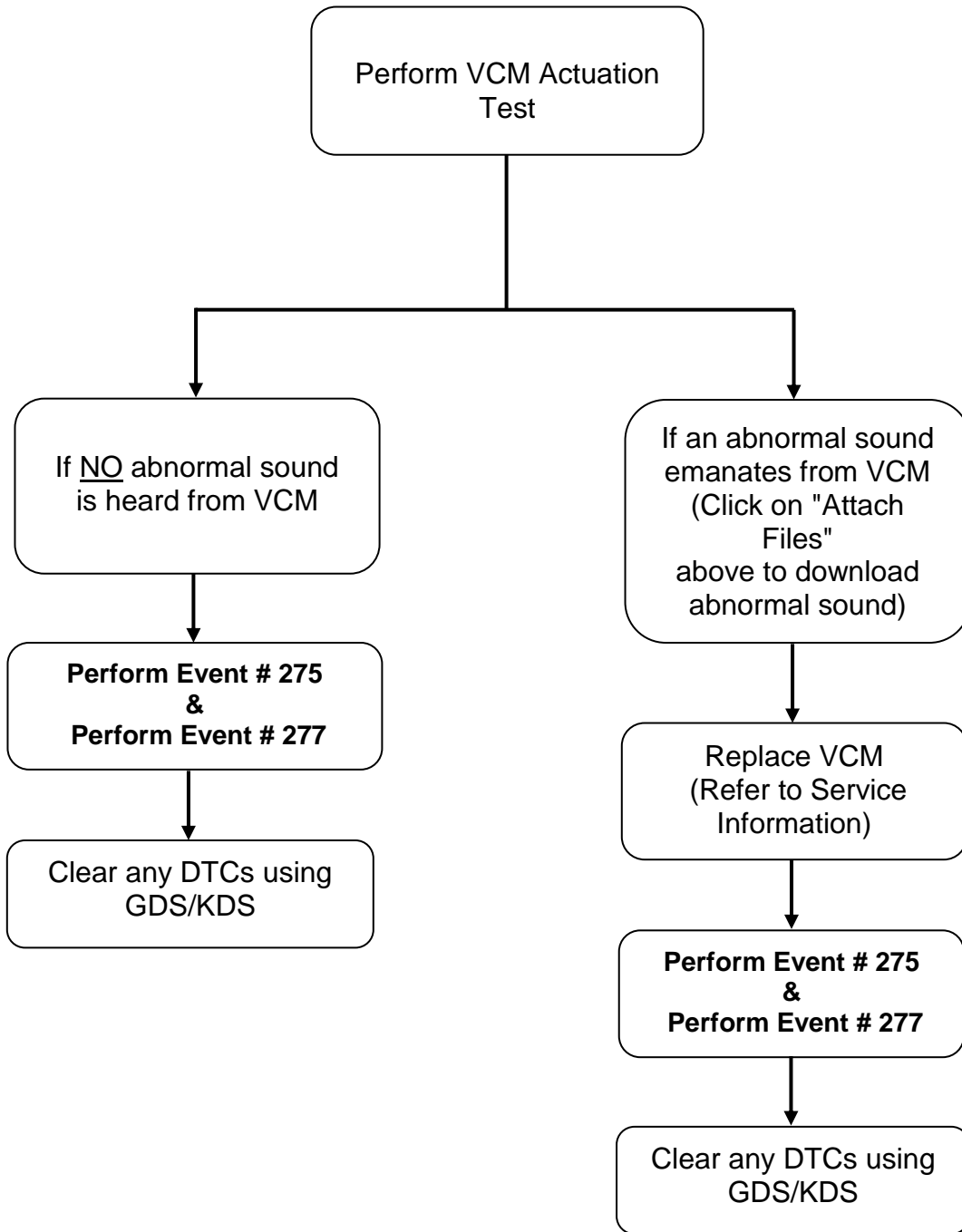
This issue number is **SA 220**.

File Under: <Engine>

Circulate To:  General Manager  Service Manager  Parts Manager

Service Advisor(s)  Technician(s)  Body Shop Manager  Fleet Repair

**Diagnostic Flowchart:**



**\* NOTICE**

**Do not replace the intake manifold for this concern. Any associated claims for intake manifold replacement are subject to review and chargeback.**

SUBJECT:

VCM LOGIC IMPROVEMENT –DTC P200A00 (SA 220)

**ECM Upgrade Procedure:**

To correct this condition, the ECM should be reprogrammed using the GDS/KDS download, as described in this bulletin.

UPGRADE EVENT NAME
275.UMA 2.4GDI VCM LOGIC IMPROVEMENT
277. UMA 2.4GDI TCU FLEXRAY NOISE IMPROVEMENT


**\* NOTICE**

- A fully charged battery is necessary before ECM upgrade can take place. It is recommended that the Midtronics GR8-1299 system be used in ECM mode during charging. **DO NOT** connect any other battery charger to the vehicle during ECM upgrade.
- All ECM upgrades must be done with the ignition key in the 'ON' position.
- Be careful not to disconnect any cables connected to the vehicle or GDS during the ECM upgrade procedure.
- **DO NOT** start the engine during ECM upgrade.
- **DO NOT** turn the ignition key 'OFF' or interrupt the power supply during ECM upgrade.
- When the ECM upgrade is completed, turn the ignition 'OFF' and wait 10 seconds before starting the engine.
- **ONLY** use approved ECM upgrade software designated for the correct model, year.

**CAUTION**

Before attempting an ECM upgrade on any Kia model, make sure to first determine whether the particular model is equipped with an immobilizer security system. Failure to follow proper procedures may cause the PCM to become inoperative after the upgrade and any claims associated with this repair may be subject to chargeback. 🚗

**ROM ID INFORMATION TABLES :****Upgrade event #275 (UMa)**

MODEL	T/M	IMMO	ECM P/N	ROM ID	
				OLD	NEW
UMA 2.4 GDI	6AT	Yes (+) 	39100 2GGF5 39100 2GGH5	UMAFNC4ER91A	UMAFNC4ERA51
				UMAFNC4ER92A	
		UMAGNC4ERA31			
		No (-)	39100 2GGF0 39100 2GGH0	UMAFNC4EM91A	UMAFNC4EMA51
UMAFNC4EM92A					
UMAGNC4EMA31					
39100 2GGF1 39100 2GGH1	UMAFNC4EMA3A	UMAFNC4EMA5B			
	UMAFNC4EMA5A				

*To verify the vehicle is affected, be sure to check the Calibration Identification of the vehicle's ECM ROM ID and reference the Information Table as necessary.*

**Upgrade event #277 (UMa)**

MODEL	DT	IMMO	ECU P/N	ROM ID	
				OLD	NEW
UMA 2.4 GDI	2WD	No(-)	39100 2GGF0 39100 2GGF1	TUM2G24NB0	TUM2G24NB2
				TUM2G24NB1	
	Yes (+)	39100 2GGF5			
	4WD	No (-)	39100 2GGH0 39100 2GGH1	TUM4G24NB0	TUM4G24NB2
TUM4G24NB1					
Yes (+)		39100 2GGH5			

*To verify the vehicle is affected, be sure to check the Calibration Identification of the vehicle's ECM ROM ID and reference the Information Table as necessary.*

**\* NOTICE**

If performing this TSB using KDS, refer to TSB SST 037 for detailed information.

1. Connect the power supply cable to the GDS.

**\* NOTICE**

If attempting to perform the ECM upgrade with the power supply cable disconnected from the GDS, be sure to check that the GDS is fully charged before ECM upgrade. If the GDS is not fully charged, failure to perform the ECM upgrade may occur. Therefore, it is strongly recommended that the power supply connector be connected to the GDS.

SUBJECT:

VCM LOGIC IMPROVEMENT –DTC P200A00 (SA 220)

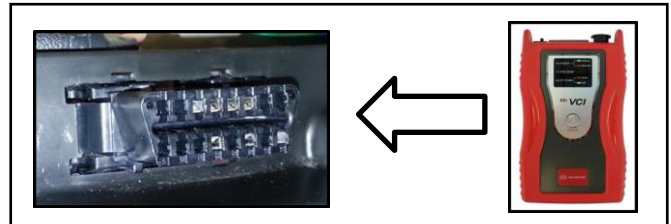
- Connect the USB cable between the VCI and the GDS.

### \* NOTICE

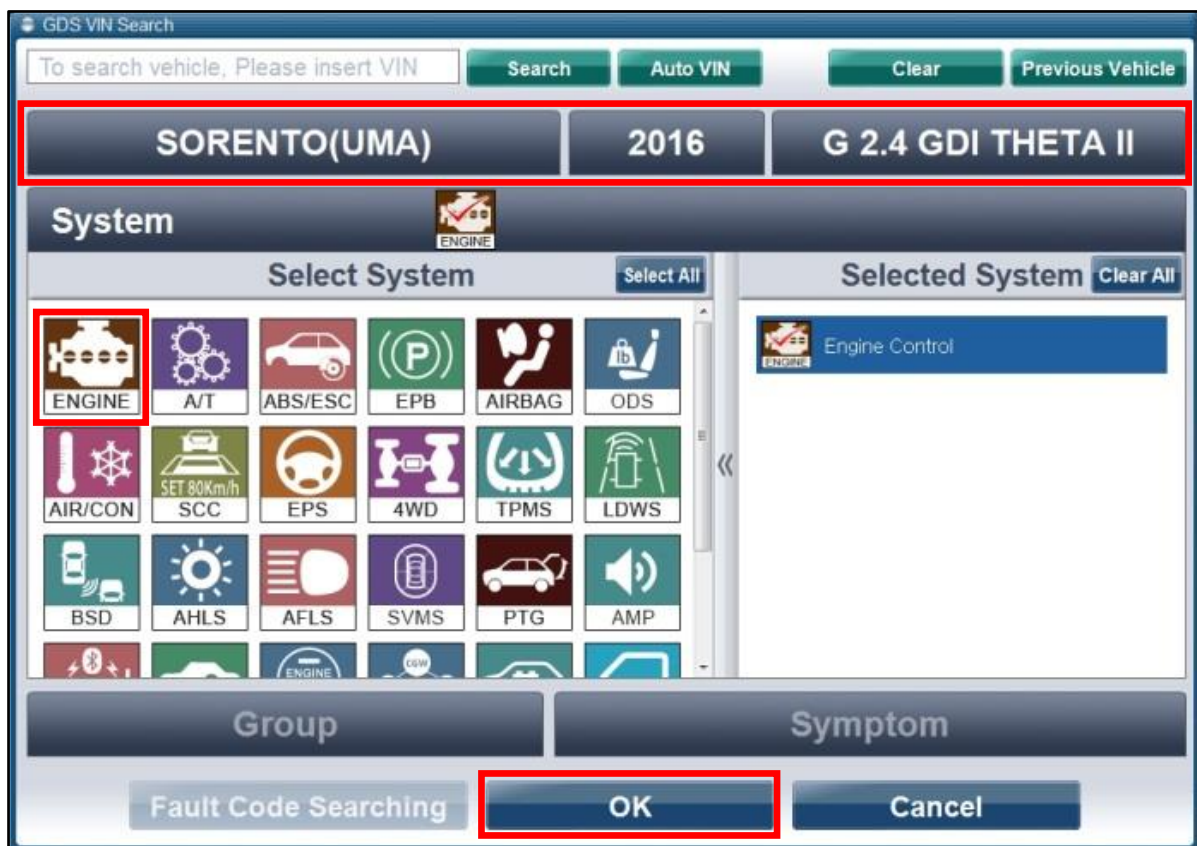
When performing the ECM upgrade using the GDS, wireless communication between the VCI and GDS is not available. Therefore, be sure to connect the USB cable between the VCI and the GDS.

- Connect the Main 16-pin DLC cable (GHDM – 241000) to the VCI.

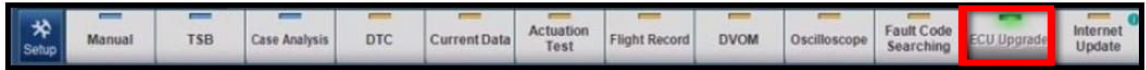
- Connect the Main 16-pin DLC cable (GHDM – 241000) to the OBD-II connector, located under the driver's side of the instrument panel.



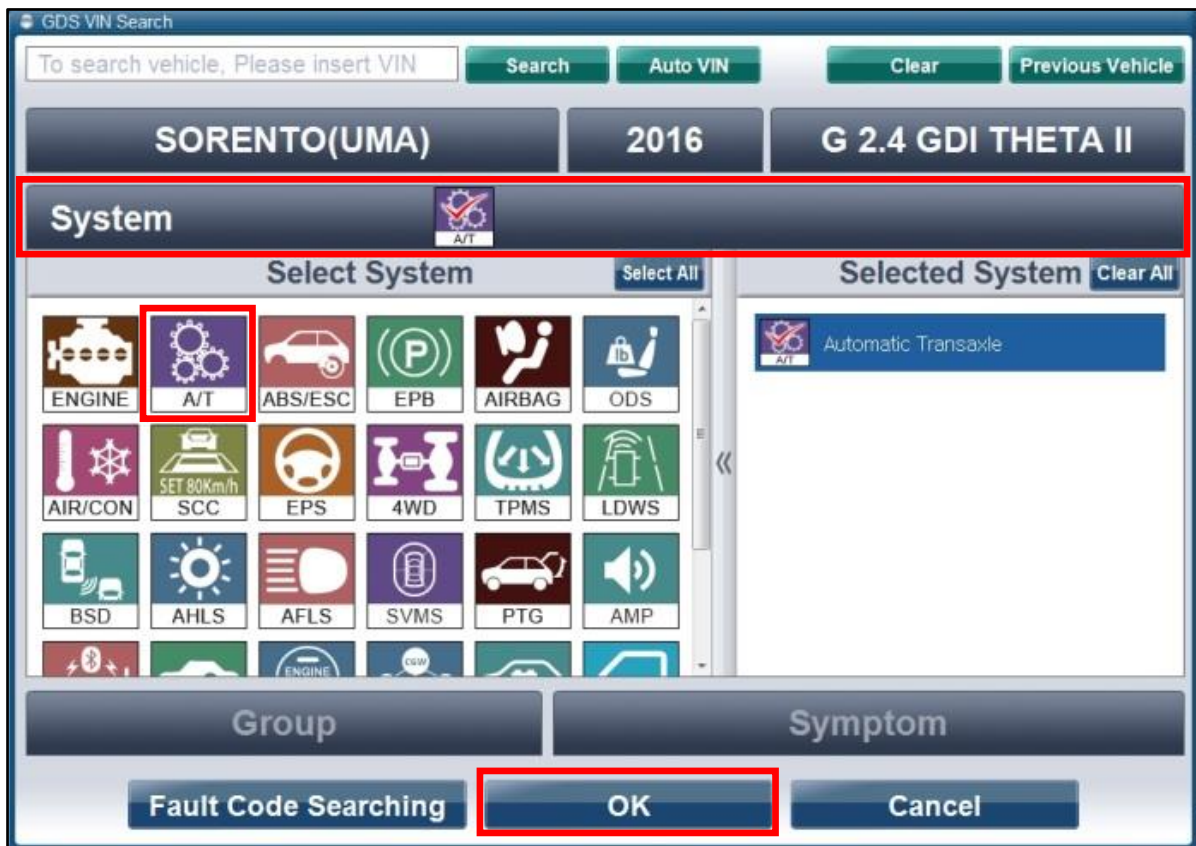
- With the ignition key ON, turn ON the VCI and GDS. Access the GDS vehicle identification number (VIN) screen and configure the vehicle using the **VIN AUTO DETECT** Function.
- Select **ENGINE** system, and click **OK**.



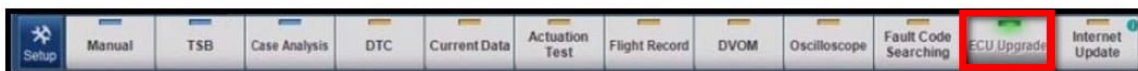
7. Select **ECU Upgrade** from the bottom right-hand corner. Next select **Auto Mode**, and then **Engine**. Perform event #275 in accordance with normal GDS upgrade procedures.



8. After performing event #275, return the GDS home screen, select **A/T System** and click **OK**.



9. Select **ECU Upgrade** from the bottom right-hand corner. Next select **Auto Mode**, and then **A/T**. Perform the event #277 in accordance with normal GDS upgrade procedures.



10. Check for Diagnostic Trouble Codes using the GDS and erase any DTCs stored such as EPS, ESC, and TPMS that may have been set during reprogramming.
11. Start the engine to confirm proper operation of the vehicle

SUBJECT:

VCM LOGIC IMPROVEMENT –DTC P200A00 (SA 220)

**CAUTION**

Before attempting an ECM upgrade on any Kia model, make sure to first determine whether the particular model is equipped with an immobilizer security system. Failure to follow proper procedures may cause the PCM to become inoperative after the upgrade and any claims associated with this repair may be subject to chargeback. 🚗

**\* NOTICE**

Do NOT attempt to perform a Manual Mode upgrade unless Auto Mode fails. Always follow the instructions given on the GDS in either Auto or Manual mode. See table for Manual Mode passwords.

**\*MANUAL MODE ECM UPGRADE PASSWORDS:**

\*Do NOT perform Manual Mode ECM upgrade unless Auto Mode fails.

**Upgrade event #275 and #277 Sorento (UMa)**

Event #	System	Menu	Password
275	ECU	UMA 2.4GDI A/T -IMMO : 39100-2GGF1/H1	0021
		UMA 2.4GDI A/T -IMMO : 39100-2GGF0/H0	0020
		UMA 2.4GDI A/T +IMMO/SMK : 39100-2GGF5/H5	0025
277	TCU	UMA Theta 2.4GDI 2WD : 39100-2GGF0/1/5	0021
		UMA Theta 2.4GDI 4WD : 39100-2GGH0/1/5	0026

1. Within the ECM Upgrade screen, select **Manual Mode** in the left column, select **Engine** and then select **Upgrade Event #275**. Select the appropriate control unit part number by referring to the ROM ID Information Table on Page 4, and click **OK**. After performing event #275, perform **Upgrade Event #277** in the same manner.
2. Enter the appropriate password from the table above, and click **OK**.
3. Upgrade will begin and the progress of the upgrade will appear on the bar graph.
4. When the GDS reports that the ECM upgrade has been successfully completed, click **OK**, turn OFF the ignition key, and wait at least 10 seconds before attempting to start the engine.
5. Check for Diagnostic Trouble Codes using the GDS and erase any DTCs stored such as EPS, ESC, and TPMS that may have been set during reprogramming.
6. Start the engine to confirm proper operation of the vehicle.

SUBJECT:

VCM LOGIC IMPROVEMENT – DTC P200A00 (SA 220)

## PARTS INFORMATION:

Part Name	Part Number	Qty.
Motor Assy-VCM	28323 2GGA1	1

## AFFECTED VEHICLE PRODUCTION RANGE:

Model	Production Date Range
Sorento (UMa)	From November 17, 2014 through December 21, 2015

## WARRANTY CLAIM INFORMATION:

Claim Type	Causal P/N	Qty.	N Code	C Code	Repair Description	Labor Op Code	Time	Related Parts	Qty.
V	39100 2GGF0	0	N99	C99	(SA 220) ECM Upgrade	160A02R0	0.7 M/H	N/A	0
					(SA 220) ECM & TCM Upgrade and VCM Replace	160A02R1	1.1 M/H	28323 2GGA1	1

**\* NOTICE**

VIN inquiry data for this repair is provided for tracking purposes only. Kia retailers should reference SA 220 when accessing the WebDCS system.