
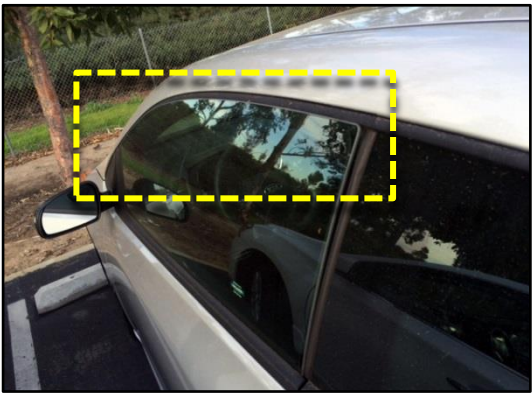
	GROUP Body	MODEL Forte KOUP (YD)
	NUMBER PS449	DATE April 2016
 		
SUBJECT: FRAMELESS WINDOW SHORT DROP FEATURE INOPERATIVE		

Some Forte Koup (YD) vehicles, produced before October 1, 2014, may experience difficulty when opening/closing the doors in freezing temperatures, due to the operation of the short drop feature as a result of frost/ice build-up between the window glass and outside belt molding. Normal operation of this feature involves the window lowering 0.4” (10mm) when the door is opened and raising to normal position when the door is closed. Due to extreme cold wintery conditions the customer may inquire with your dealer about its operation.



To address this condition, refer the customer to the procedure shown in the 2015MY Forte Owner’s Manual (Section 4, Page 29), or see below:

“If the window does not drop down automatically because ice has formed around it, tap lightly the windows to break the ice. Do not pry on the windows. If necessary, move the vehicle to a warm place and allow the ice to melt “.

If after performing the procedure described above, the customer continues to experience concerns in freezing temperatures, replace the belt line moldings for both driver and passenger sides with the parts number shown below.

PART INFORMATION:

Left Side	Right Side	Comments
82210 A7201	82220 A7201	Replace Both Sides

Refer to the LTS for labor time.