

## SERVICE CAMPAIGN BULLETIN

<b>TITLE:</b>	Vehicle Software Update to Platform 4.5
<b>CAMPAIGN REFERENCE</b>	03T
<b>DOCUMENT NUMBER:</b>	11 M 096
<b>AFFECTED VEHICLES:</b>	McLaren 675LT
<b>SITUATION:</b>	<p>Quality Engineering at McLaren Automotive have released a new software platform for the McLaren 675LT.</p> <p>The customer benefits of this software are:</p> <ul style="list-style-type: none"><li>• Improve functionality of nose lift operation</li><li>• Improve HVAC temperature control</li><li>• Improve AIS IRIS to prevent system freeze</li><li>• Introduction of Gen2 12v battery software</li></ul>
<b>PROCEDURE:</b>	<p>It is necessary to update the software on all vehicles within your Aftersales car parc, both when carrying out Pre-Delivery Inspections (PDI) and at the next service centre visit.</p>

Module	New software part numbers
Intelligent Battery Sensor (IBS)	13M1080CP.10
Electronic Hydraulic Power Assisted Steering (EHPAS)	11M3142RP.02
Instrument Cluster (IC)	11M3180RP.04
Body Controller (BC)	11M3188RP.01 Coupe 11M3188RP.02 Spider
Security Body Controller (SBC)	11M3187RP.02
Heating Ventilation and Air-Conditioning (HVAC)	11M3192RP.03 With AC 11M3193RP.03 Without AC
Powertrain Chassis Control Unit (PCCU)	11M3215RP.07
Engine Control Module (ECM)	11M3071RP.03 European/ROW 11M2949RP.03 Federal
Head Unit / IRIS (HU)	11M2909CP.63 Europe 11M2910CP.63 Rest of World 11M2911CP.63 China/Hong Kong

**Removal:**

1. Please refer to AA-RM-02A02-03-004 - Remove/Install luggage bin – rear.

**Requirements:**

**Care Point:** In order to avoid personal injury and damage to the vehicle, do not connect the positive terminal (+) of the charger to the negative terminal (-). Ensure that the connections are secure. Do not place any metal objects near the battery when charging and do not place the Deutronic battery charger directly onto the battery unit.

2. Connect Deutronic battery charger to the 12V battery and leave it connected during software reprogramming procedure.

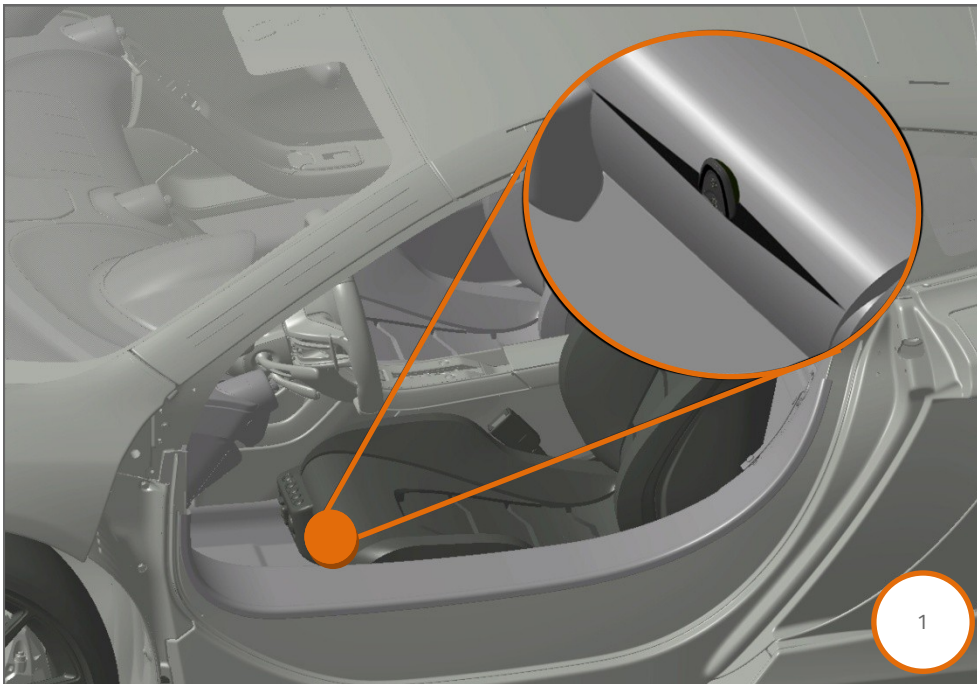
3. Connect the McLaren Diagnostic System (MDS) to the vehicle.

**Care Point:** If the VCI is connected to the MDS via the USB cable please ensure the wireless interface is disabled in the VCI manager.

**Care Point:** Both the driver and passenger windows must be in the fully open position during software reprogramming procedure.

**Care Point:** All software downloads require the vehicle to be in ignition state 5.

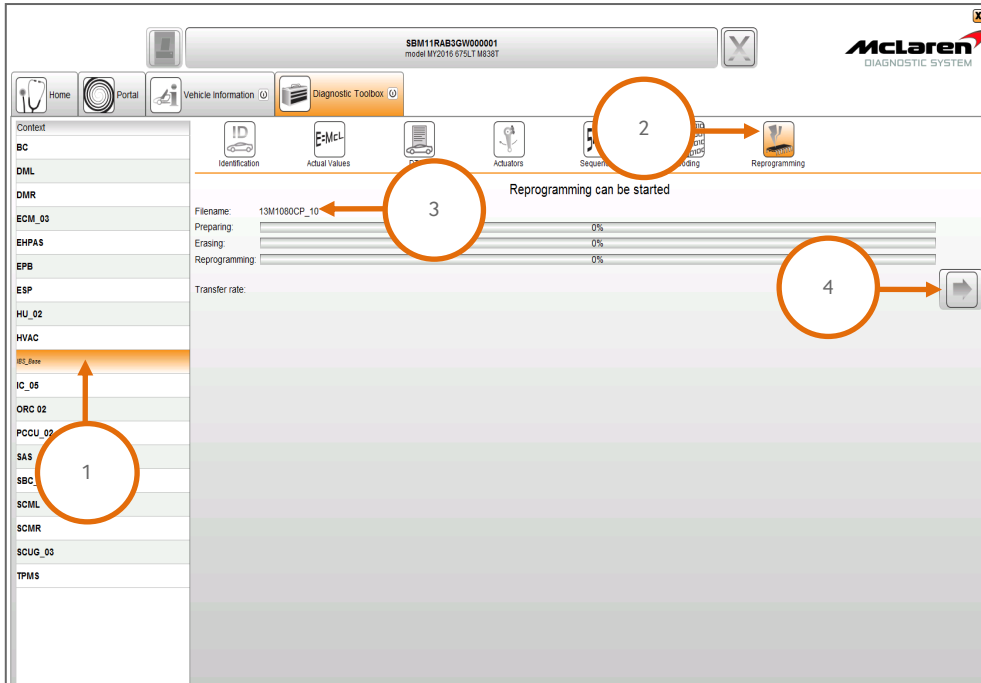
**Care Point:** The key must be positioned in the driver's seat front pocket (1).



Care Point: *IBS\_Base* will be displayed in italics.

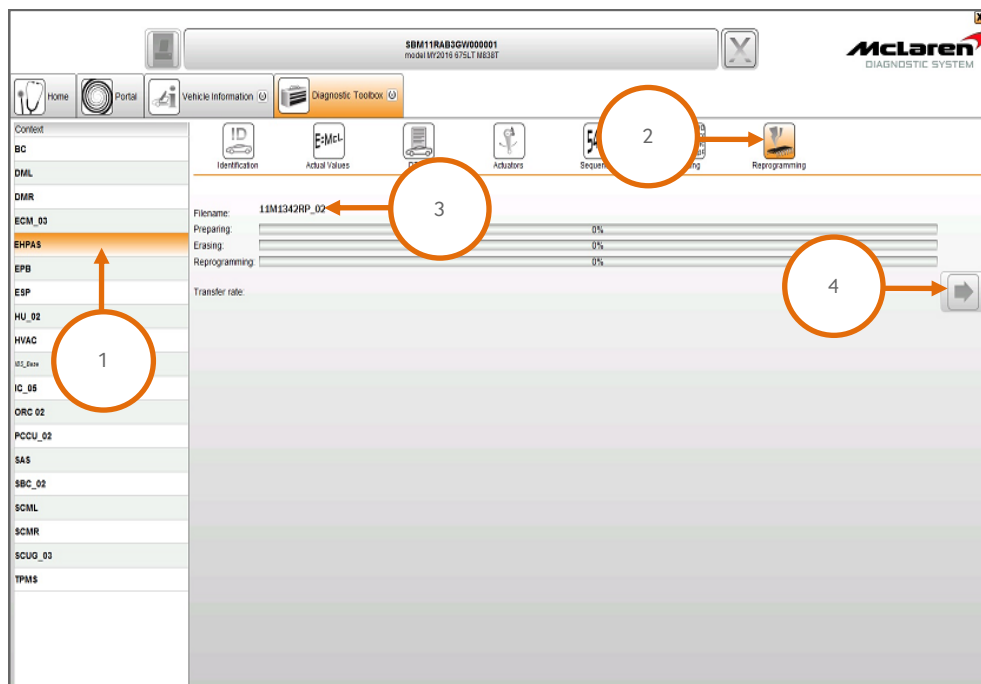
### IBS Software Update:

4. Select *IBS\_Base* (1), then Reprogramming (2), the software level 13M1080CP.10 will be displayed (3). Proceed to the software download by selecting the arrow button (4).



### EHPAS Software Update:

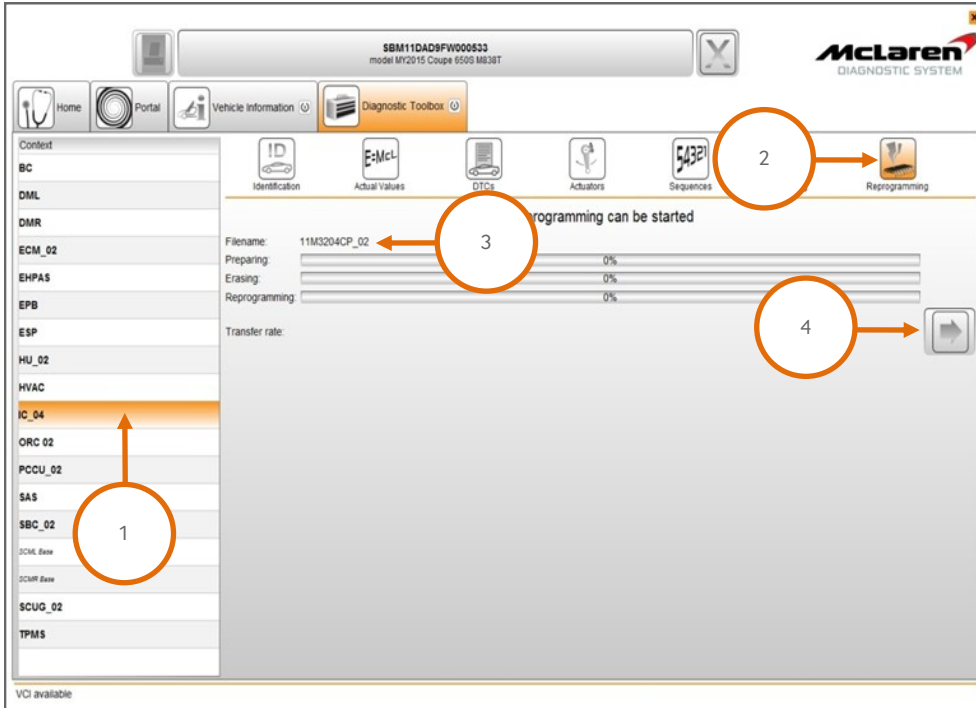
5. Select (1), then Reprogramming (2), the software level 11M3142RP.02 will be displayed (3). Proceed to the software download by selecting the arrow button (4).



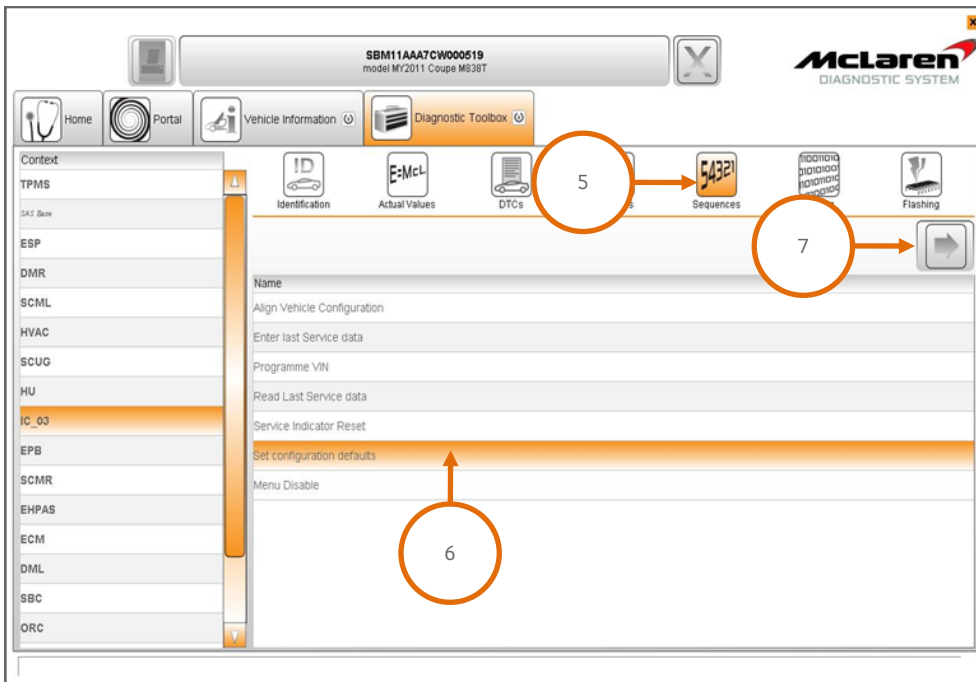
### IC Software Update:

**Care Point:** During the IC software reprogramming it is normal for the instrument cluster screens to display software numbers.

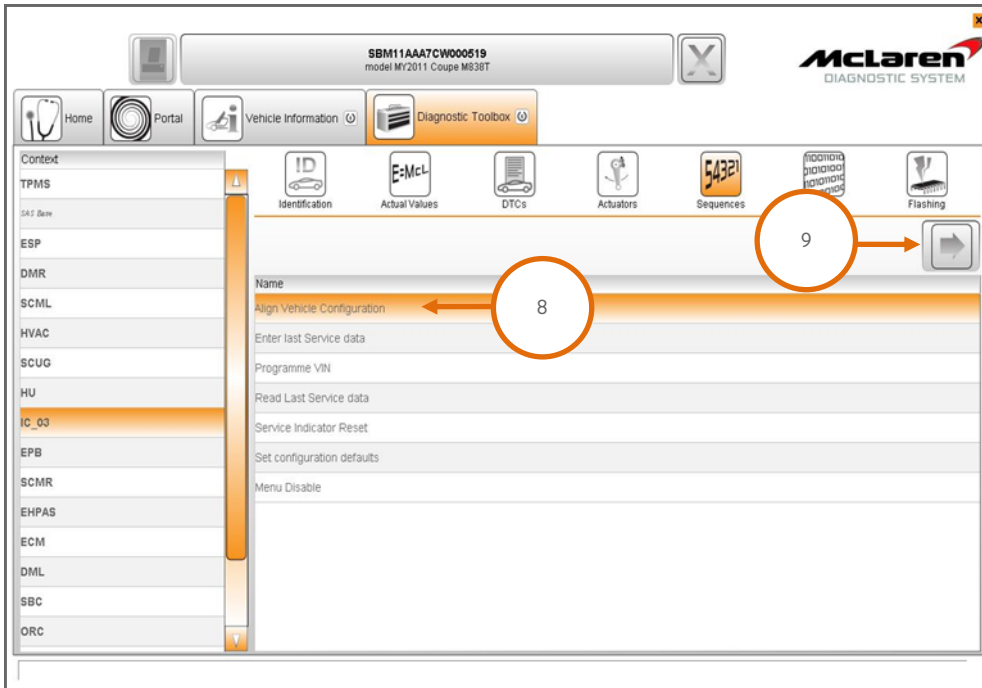
6. Select IC\_05 (1), then Reprogramming (2), the software level 11M3180RP.04 will be displayed (3). Proceed to the software download by selecting the arrow button (4).



7. Select Sequences (5), select Set configuration defaults (6) then select the arrow button to proceed (7).

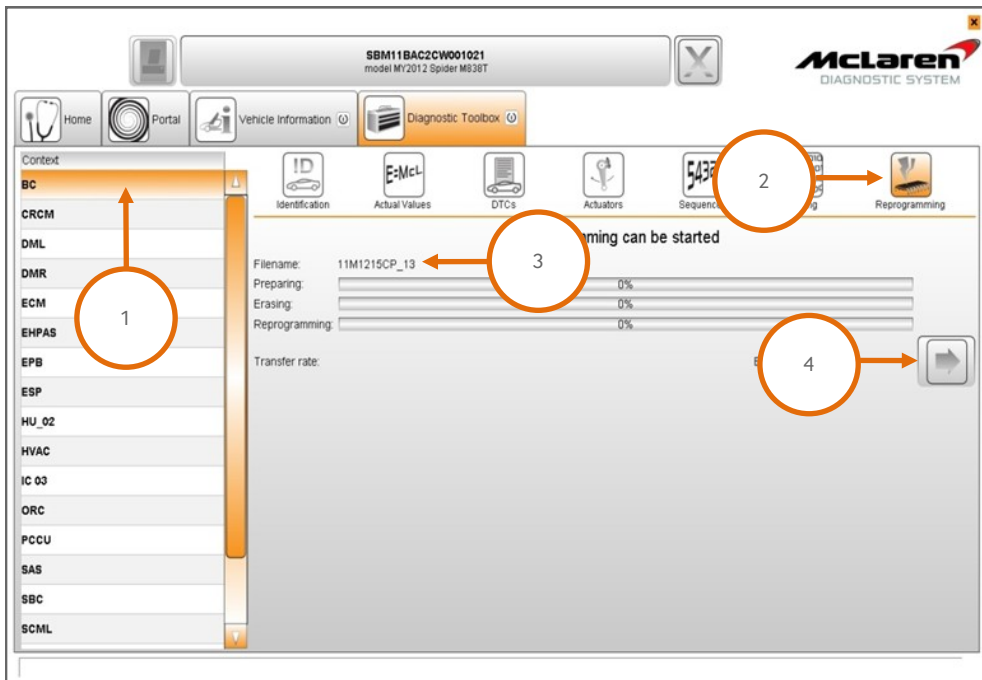


8. Select Align Vehicle Configuration (8), followed by the arrow button (9) to proceed.

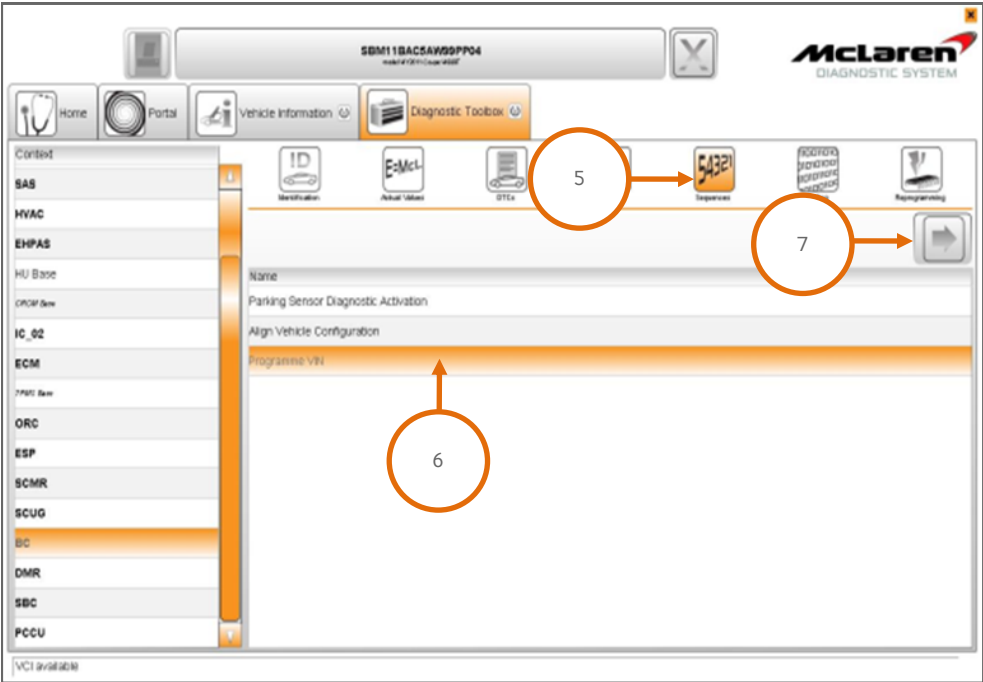


**BC Software Update:**

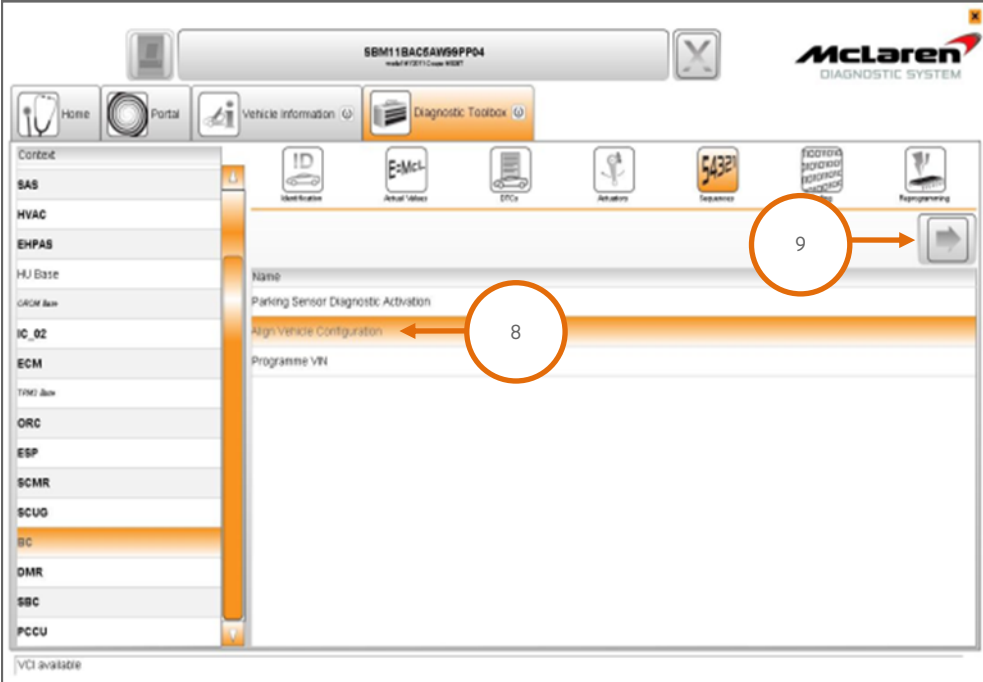
9. Select BC (1), then Reprogramming (2), the software variant applicable will be displayed (3). Proceed to the software download by selecting the arrow button (4).



10. Select Sequences (5), then Programme VIN (6), then select the arrow button to proceed (7).

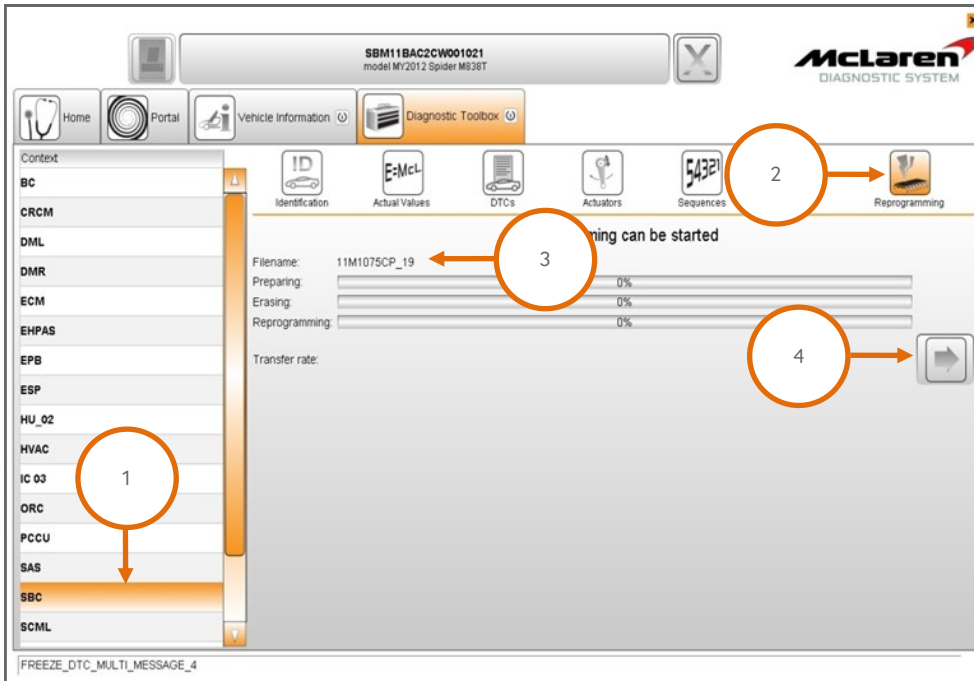


11. Select Align Vehicle Configuration (8), followed by the arrow key (9).



**SBC Software Update:**

12. Select SBC (1), then Reprogramming (2), the software level 11M3187RP.02 will be displayed (3). (3). Proceed to the software download by selecting the arrow button (4).

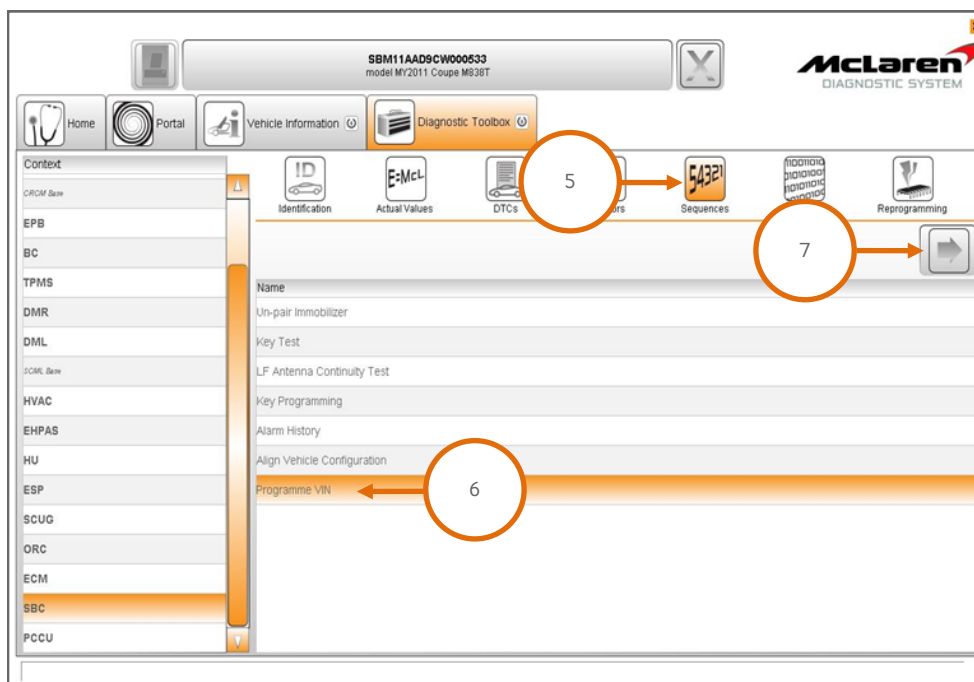


13. When the software download has been successfully completed, programming will force a sleep cycle to occur.

**Care Point:** The primary and secondary latch may operate at step 14 on Federal specification vehicles only.

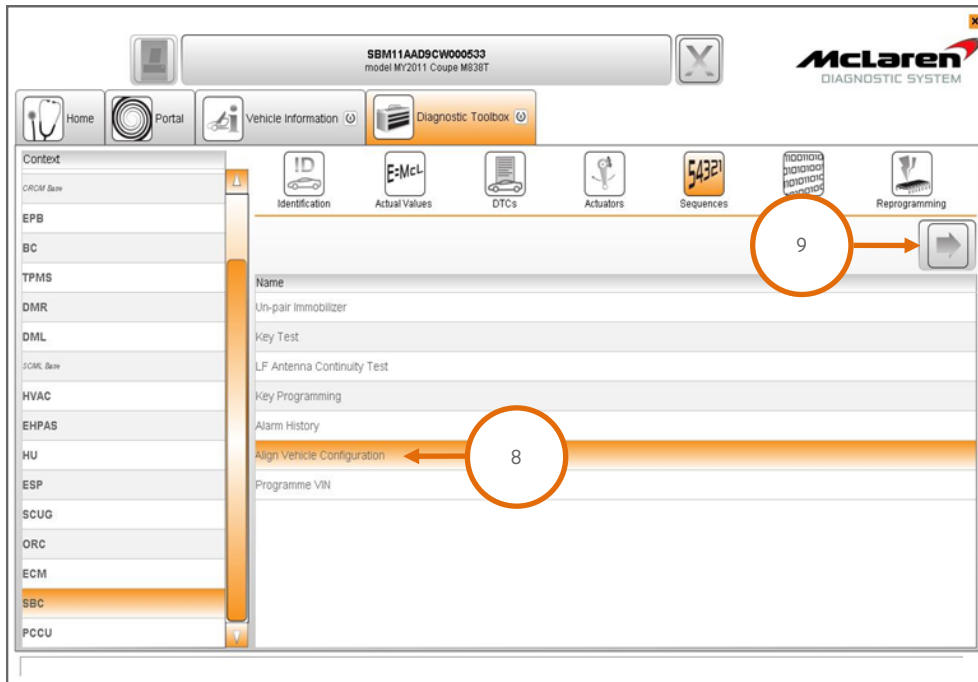
14. After one minute, press the unlock, lock and the unlock button on the key and then establish the vehicle into ignition state 5 before following the next steps.

15. Select Sequences (5), then Programme VIN (6) then select the arrow button to proceed (7). The programme VIN procedure will force a sleep cycle to occur after the programming is complete.



16. Press the unlock button on the key and then establish the vehicle into ignition state 5 before following the next steps.

17. Select Align Vehicle Configuration (8), followed by the arrow key (9).

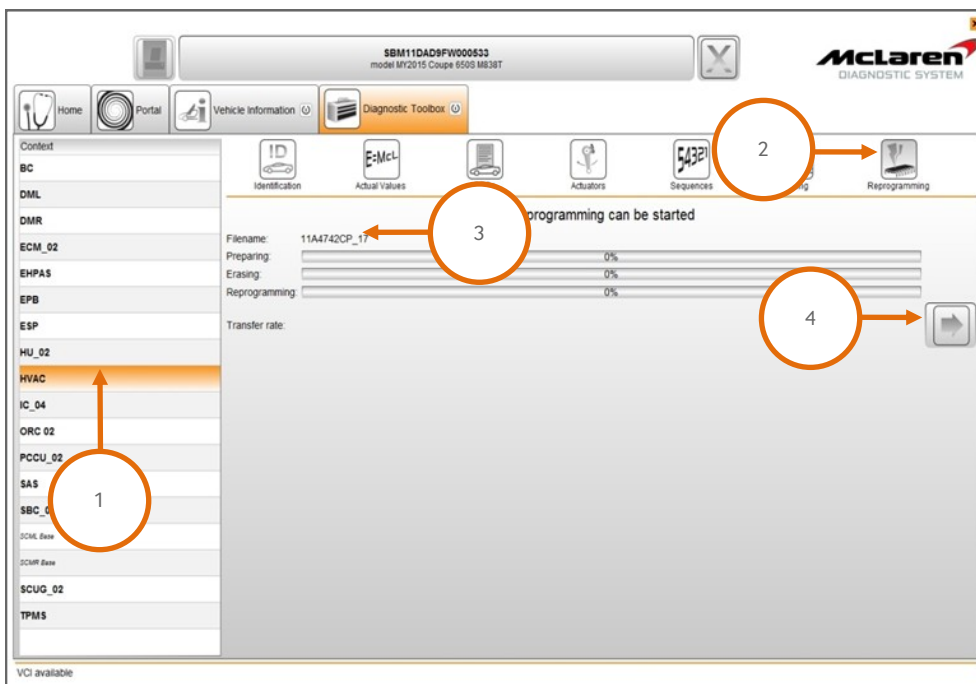


18. Press the unlock button on the key and then establish the vehicle into ignition state 5 before following the next steps.

### HVAC Software Update:

**Care Point:** DTC B1A3A00 HVAC: Config Reset can be ignored after the software update has been completed.

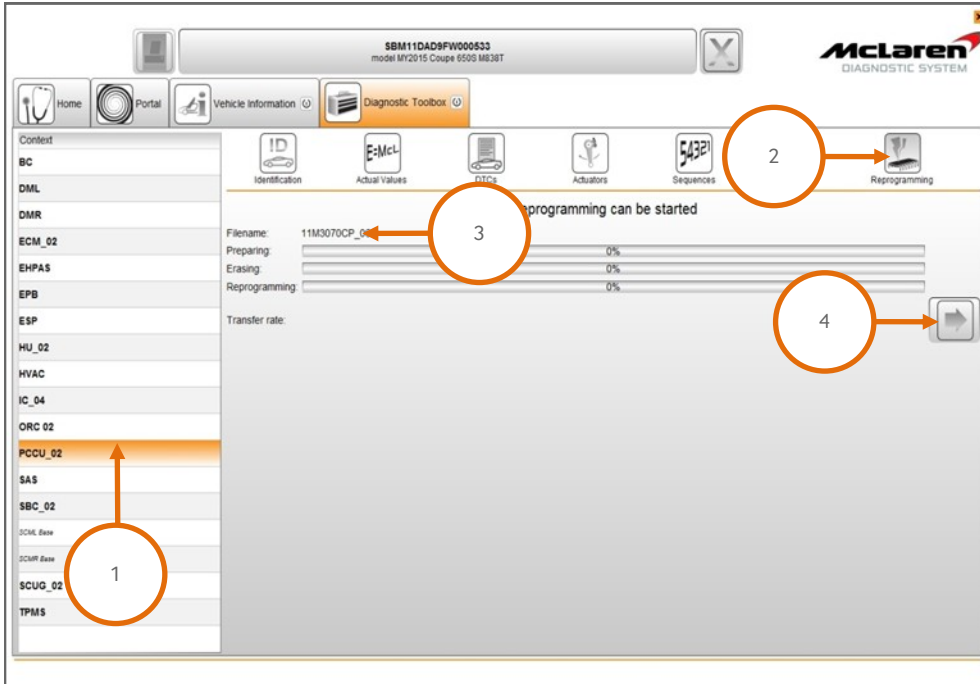
19. Select HVAC (1) then Reprogramming (2), the software variant applicable to vehicle will be displayed (3). Proceed to the software download by selecting the arrow button (4).



### PCCU Software Update:

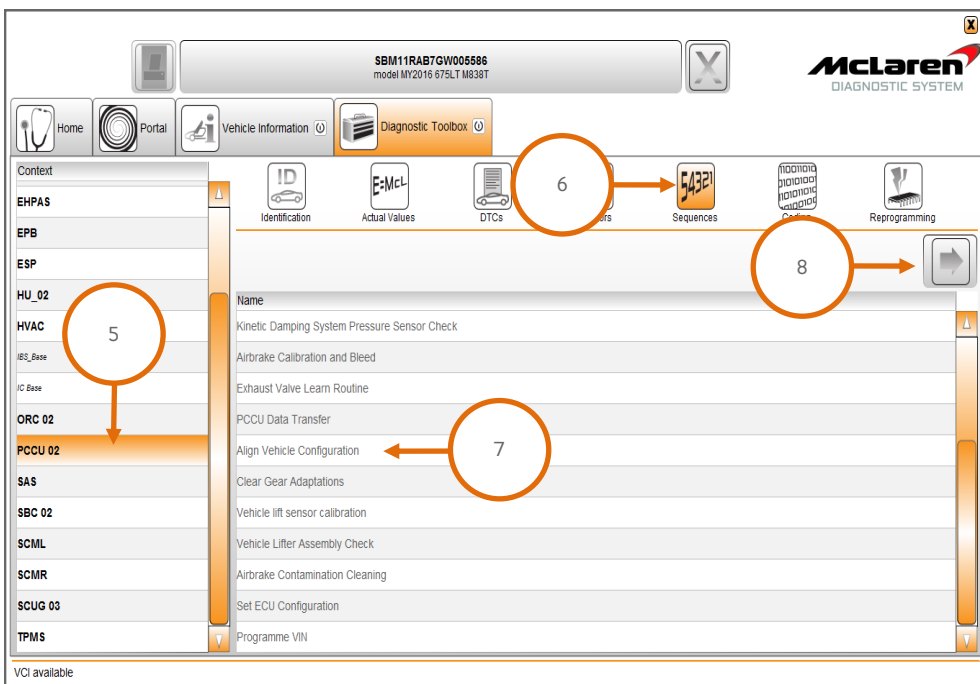
**Care Point:** During the reprogramming of the PCCU the system may state preconditions or post conditions failed. These are erroneous messages and can be ignored. Only a programming failed message should be noted as a legitimate failure.

20. Select PCCU\_02 (1), then Reprogramming (2), the software level 11M3215RP.07 will be displayed (3). Proceed to the software download by selecting the arrow button (4).

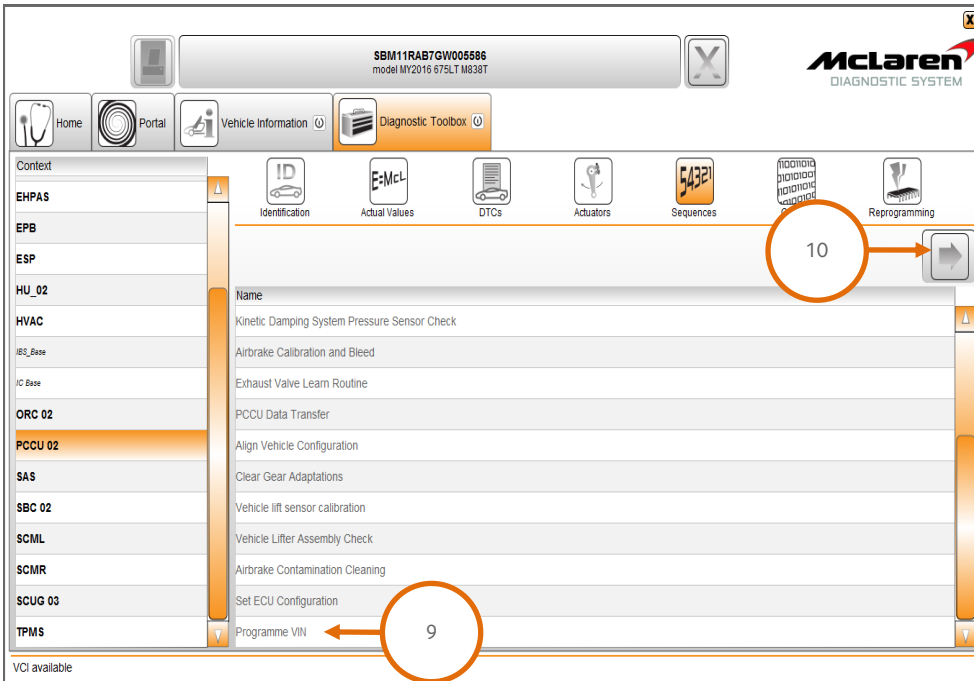


21. Cycle the ignition (off on off on) and wait for 30 seconds. Place the vehicle into a sleep mode, and then establish the vehicle back into ignition state 5. Clear any DTC's before continuing on with the procedure.

22. Select PCCU\_02 (5), then Sequences (6), select Align Vehicle Configuration (7), followed by the arrow key (8).

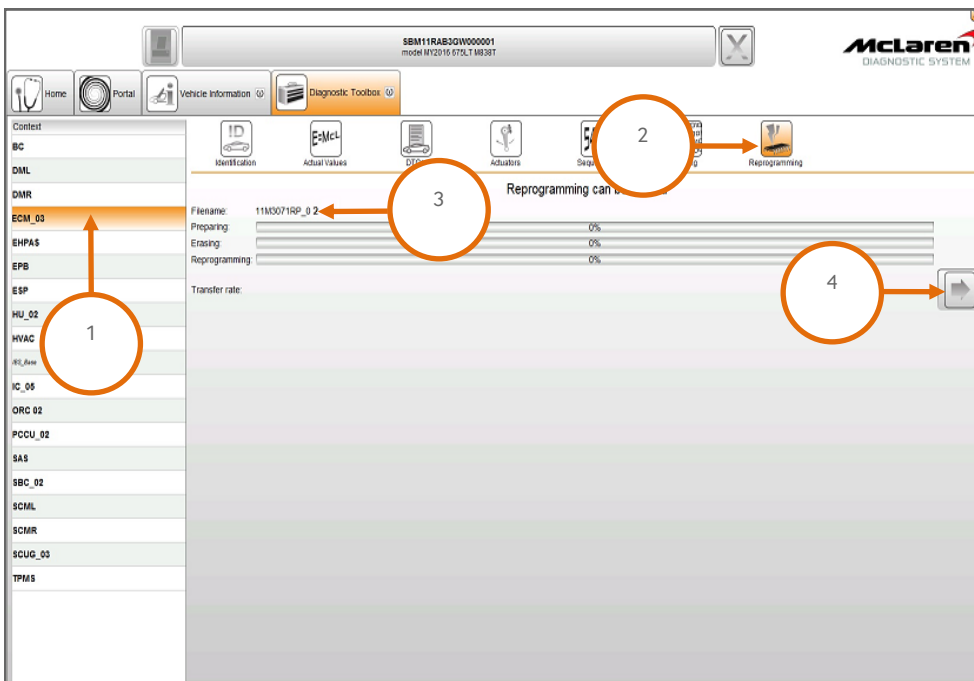


23. Select Programme VIN (9), followed by the arrow key (10).



### ECM Software Update:

24. Select ECM\_03 (1), then Reprogramming (2), the software variant applicable to your market will be displayed (3). Proceed to the software download by selecting the arrow button (4).



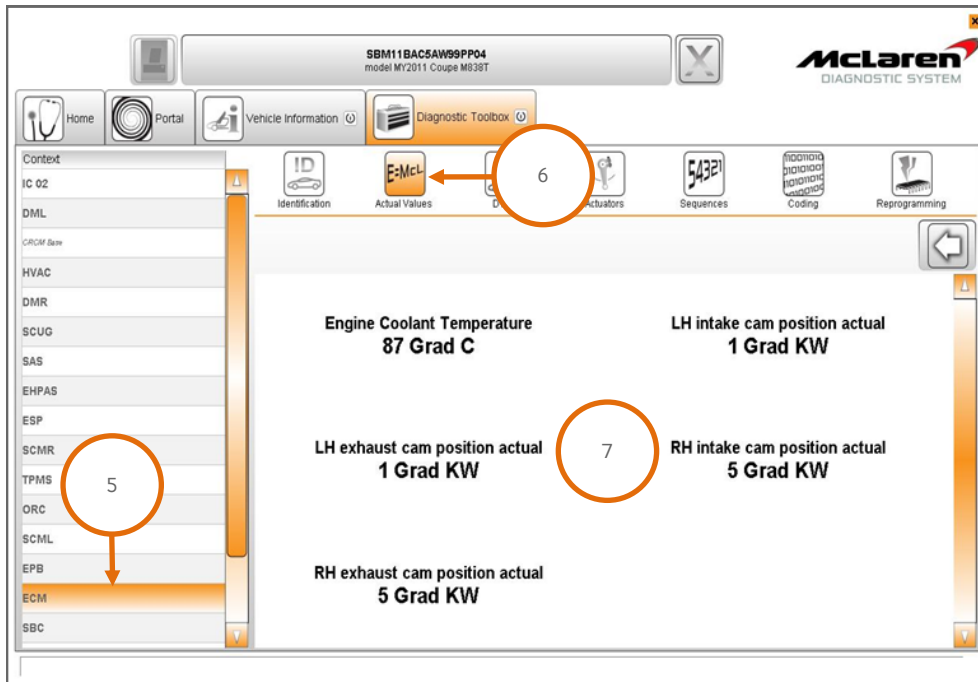
25. Cycle the ignition (off on off on) and wait for 30 seconds.

26. Press the stop/start button with the brake pedal depressed to start the engine and allow it to idle until fully warm.

**Care Point:** Vehicles installed with air conditioning must be switched on and the engine coolant temperature must be above 80°C before proceeding with the camshaft adaption procedure.

27. Select ECM (5), then Actual Values (6), select the following values as per the screenshot below (7), then select the play button to access the required data screen.

28. The inlet camshaft values should be between 9 and 12 and exhaust values should be between -9 and -12 both values will fluctuate slightly. If all values are correct no further action is required proceed to step 30. If any values are incorrect proceed to step 29 to carry out the camshaft adaption.

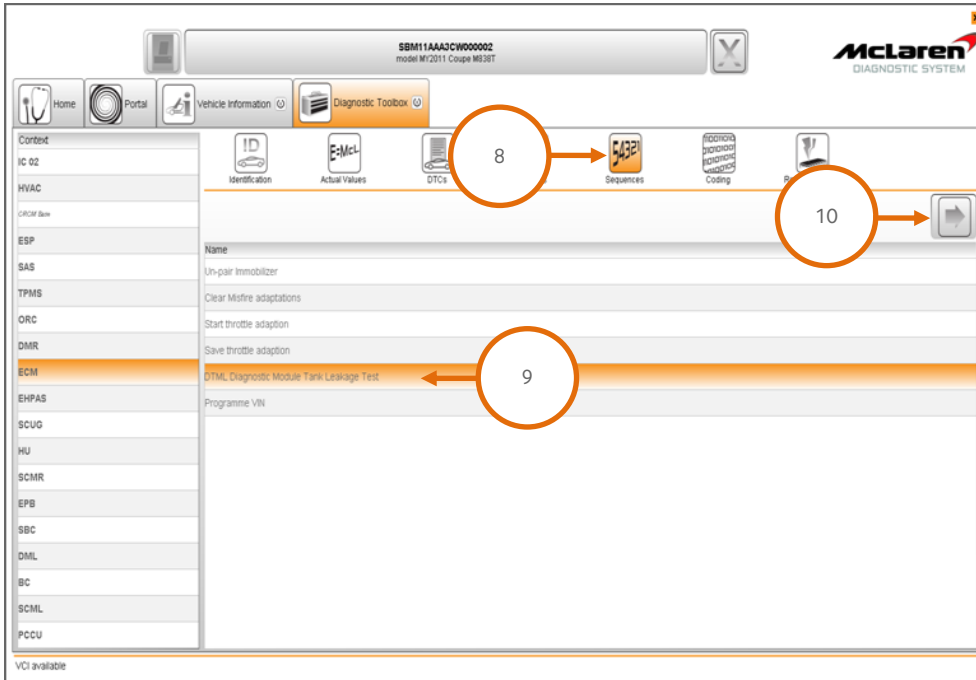


29. Switch the engine off, wait 30 seconds, restart the engine and recheck the values. Repeat this procedure until the target values are achieved.

**Care point:** The fuel level must be above 1/4 before you proceed to the Diagnostic Module Leakage Test (DMTL).

**Care point:** The DMTL test can take up to eight minutes to complete the 20 thou and 40 thou leak test

30. Select Sequences (8), then DMTL Diagnostic Module Leakage Test (9), followed by the arrow button to proceed (10).



31. End the current MDS session to allow session feedback to be sent and stored at McLaren.

**IRIS AIS Application Software:**

**Care Point:** The Application Software will be supplied via USB to dealers.

**Care Point:** Do not turn off the engine or change the ignition state during the update process unless stated within this update procedure.

**Care Point:** When installing the application software or performing a Factory Data Reset the customers stored MTT track data will be deleted.

32. Switch the ignition ON to ignition state 5 and start the engine.

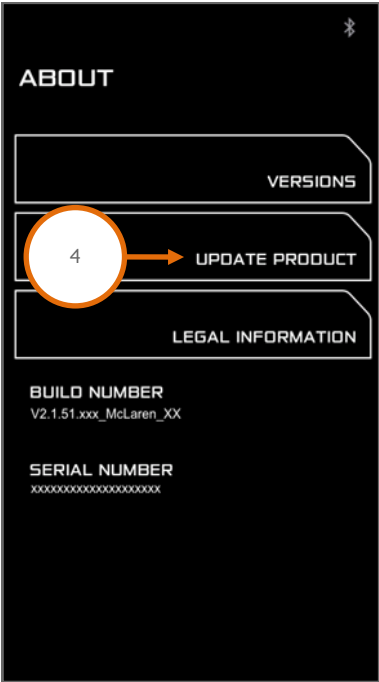
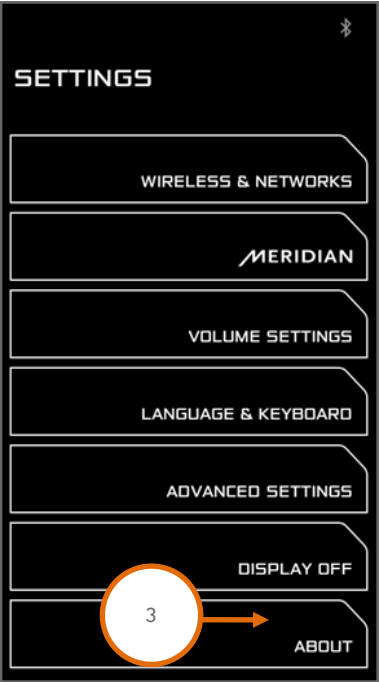
33. Make a note of the options displayed on the Home Screen as this information will be required to configure the head unit. Example screen below of the home page (1).



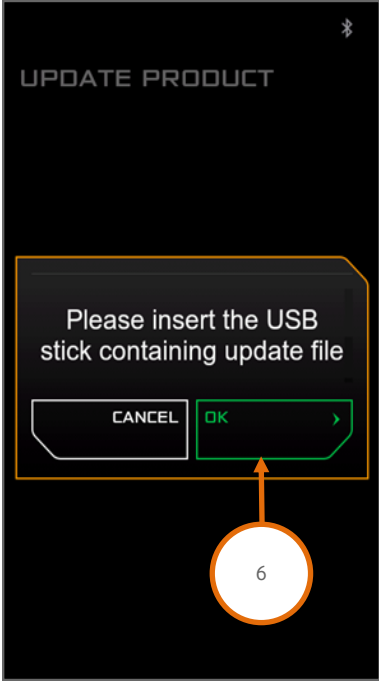
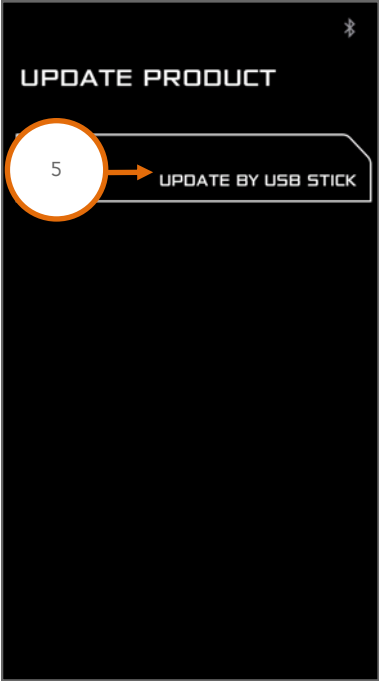
34. Insert the USB drive with the application software into the USB socket (2).



- 35. Once the USB has been inserted, the system should provide a message stating a USB device has been detected.
- 36. Press the Settings hard button on the IRIS console.
- 37. Select About (3) and then Update Product (4).



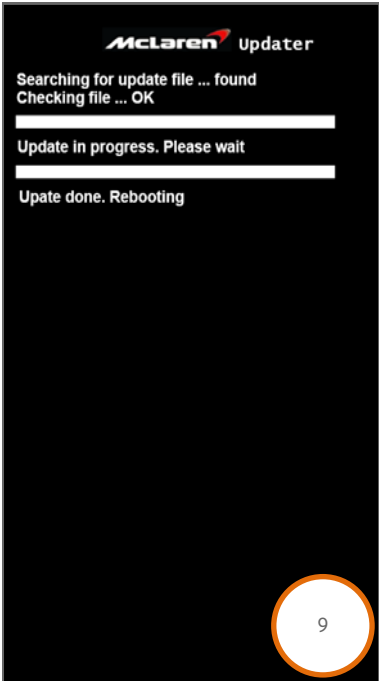
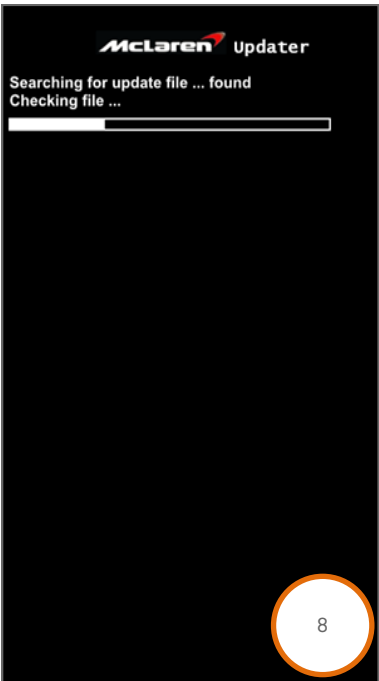
- 38. On the following screen select Update by USB Stick (5). A pop up message will be displayed. Press OK (6) to start the loading operation.



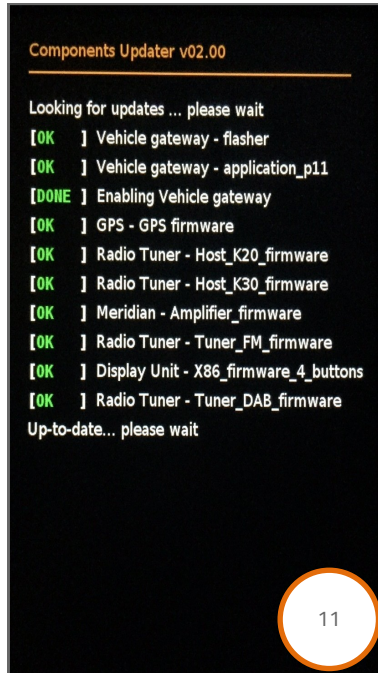
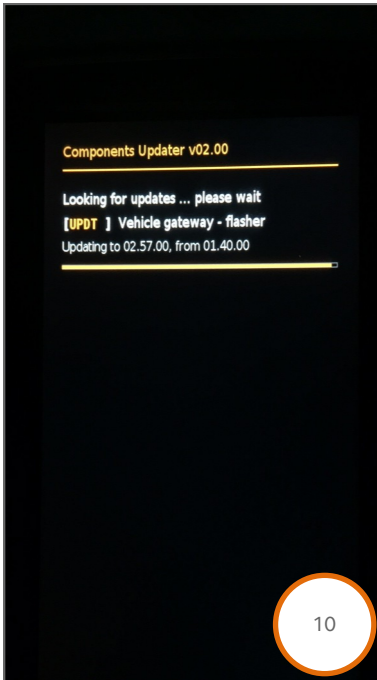
39. The following screen will be displayed (7) and the system will reboot.



40. After the system has rebooted it will search for and check the update file (8). Once the installation has finished the following screen will be displayed (9) and the system will reboot.



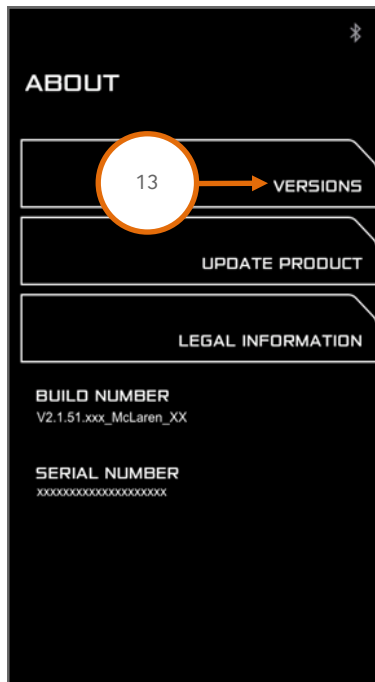
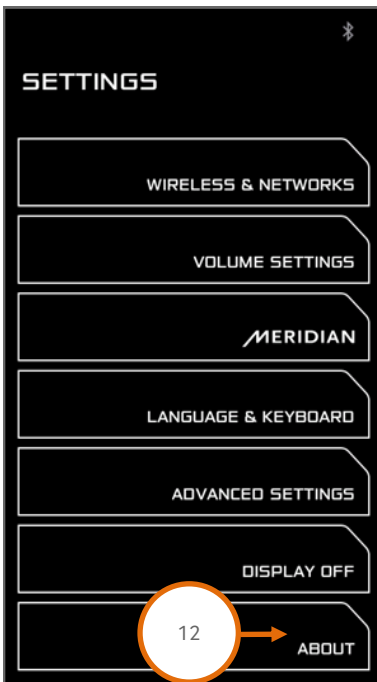
41. Following the reboot the system will start to update the individual system components (10), (11). During the update the system may reboot multiple times. This is normal, **do not attempt a manual reset.**



**Care Point:** In case the system should get stuck on the update screen if one of the component updates has failed, press and hold the home button for 45s to force the system to reboot.

42. Once all components have been updated and the system has fully rebooted, press the Settings hard button on the IRIS console.

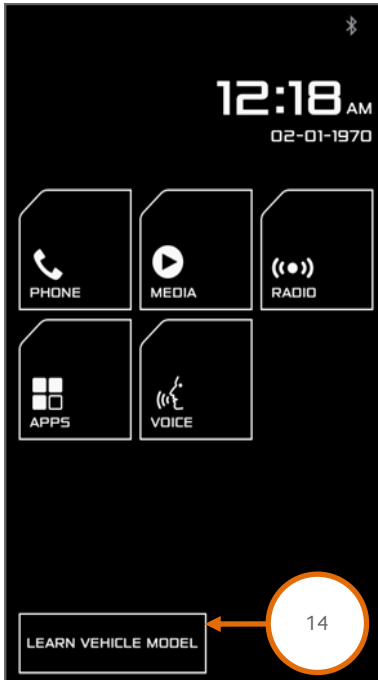
43. Select About (12) and then select Versions (13).



44. Confirm that the McLaren Software Part Number matches the Part Number listed in Table at Page 2 of this document.
45. Press the Home button on the IRIS console to return to the Home screen and remove the USB drive.

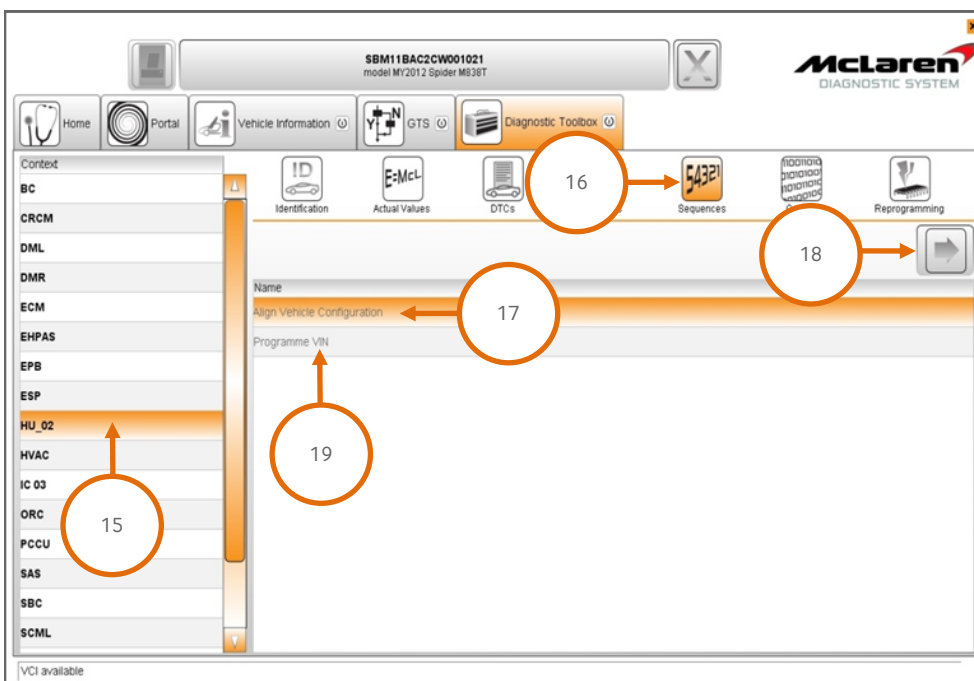
**Care Point:** For vehicles where the Learn Vehicle Model process has been completed previously the option will not be available on the Home screen. In this case go to step 46.

46. Select Learn Vehicle Model (14) from the Home Screen. The system will perform a configuration update and reboot. Wait until the system has fully booted to the Home screen before proceeding to the next step.

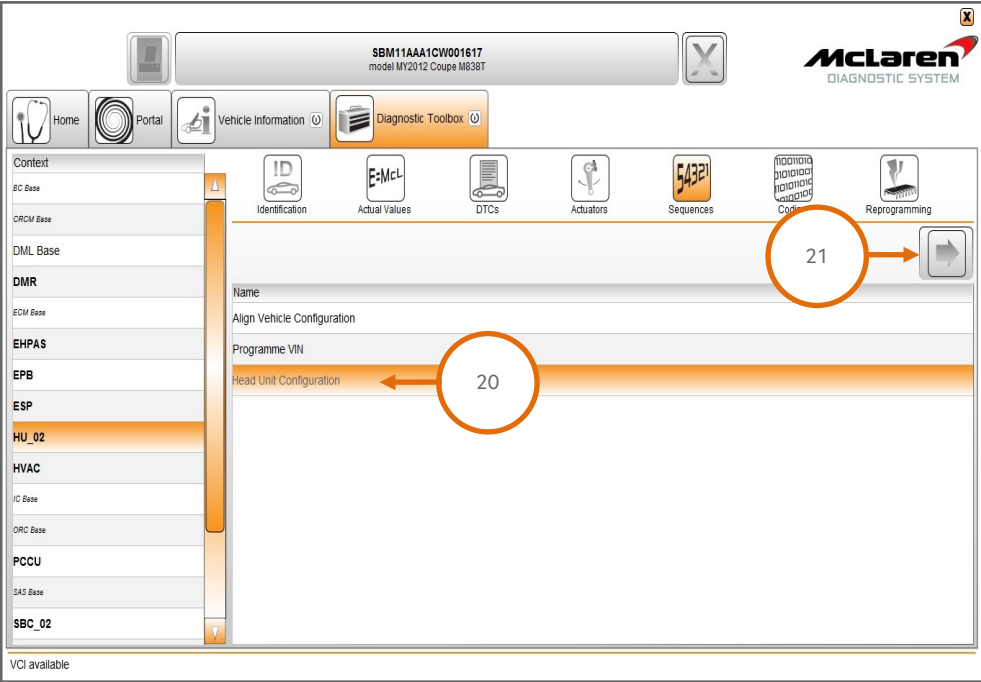


**Care Point:** The VCI must be connected to the MDS with the USB cable to perform the next steps.

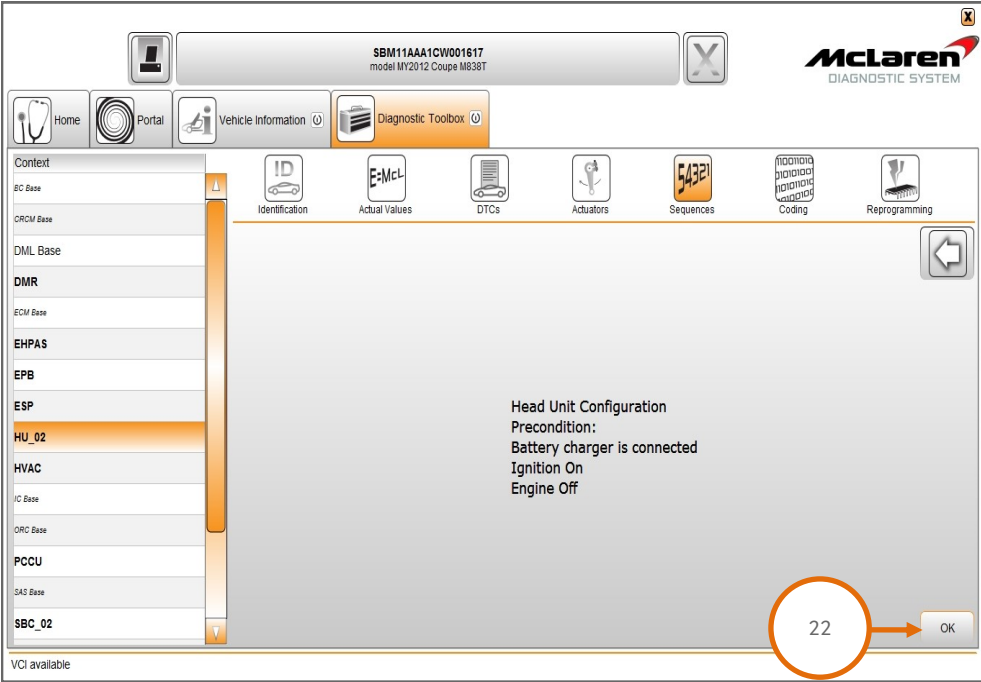
47. Start a new MDS session in the MDS Offline mode, refer to Service Information Bulletin 11 S 011 McLaren Diagnostic System (MDS) Offline, and proceed to complete the remaining procedures.
48. Select HU\_02 (15), then select Sequences (16), select Align Vehicle Configuration (17), followed by the arrow key (18).
49. Select Programme VIN (19), followed by the arrow key (18).



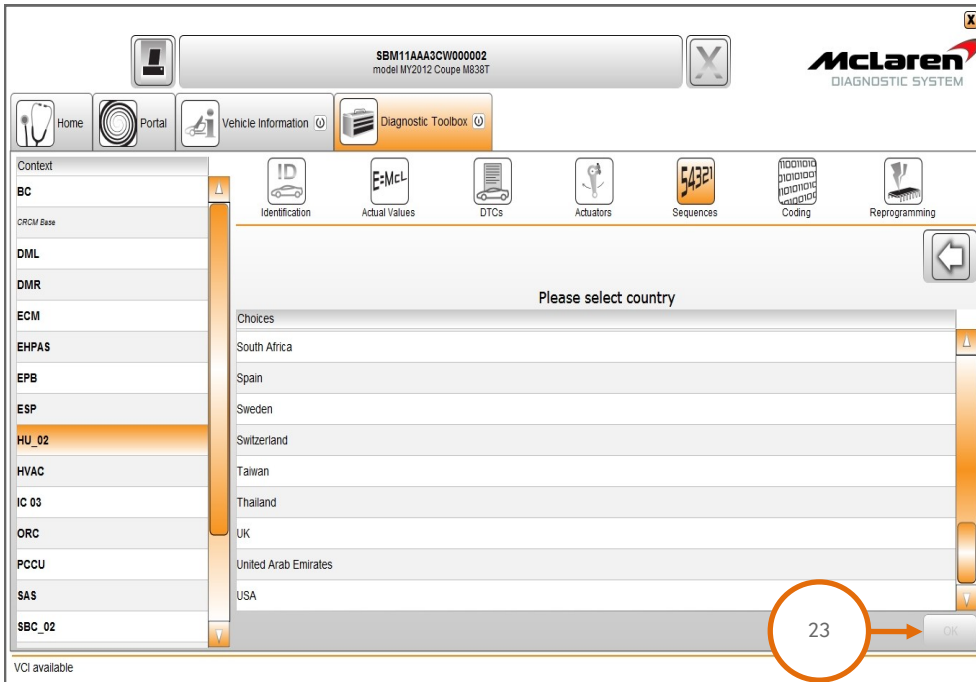
50. Select Head Unit Configuration (20), followed by the arrow key (21).



51. The following screen will appear, select OK ( 22).

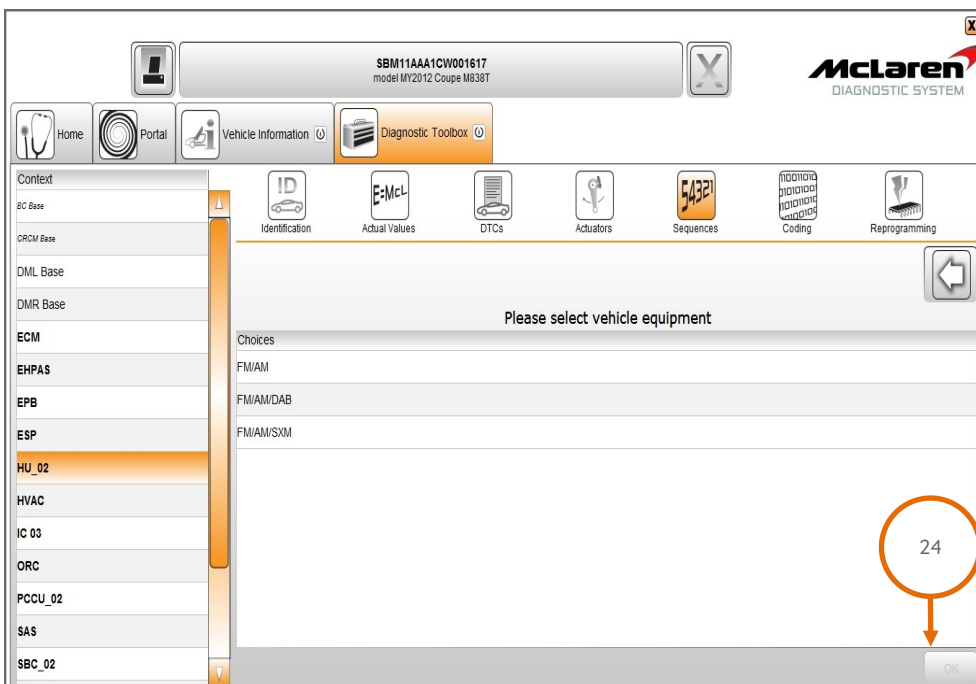


52. Select the relevant country followed by OK (23).

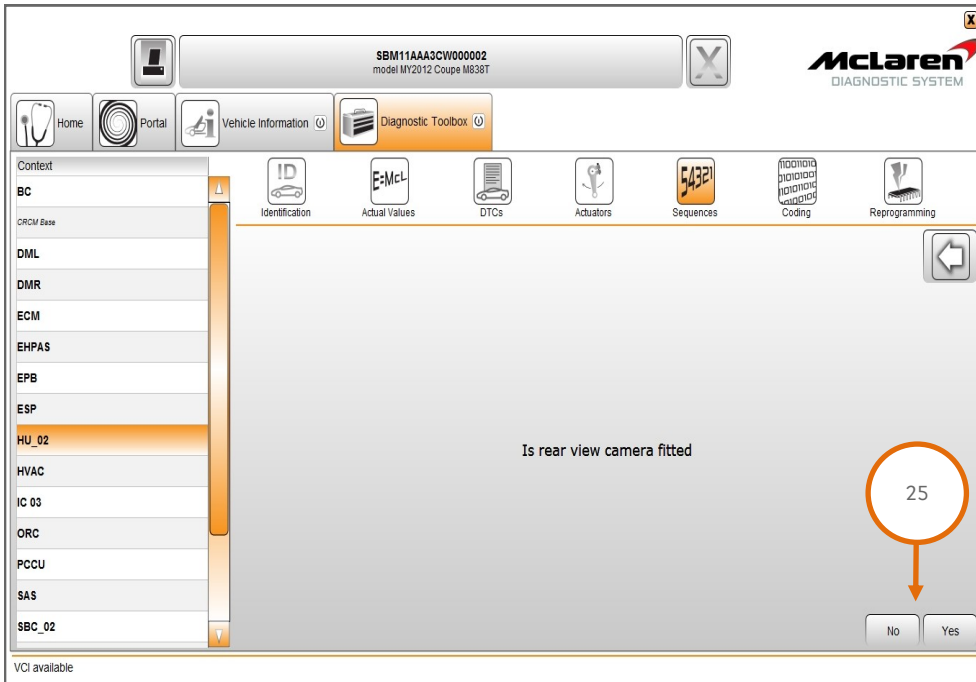


**Care Point:** The following screen will appear only if Canada is selected above. For any other countries proceed to step 54.

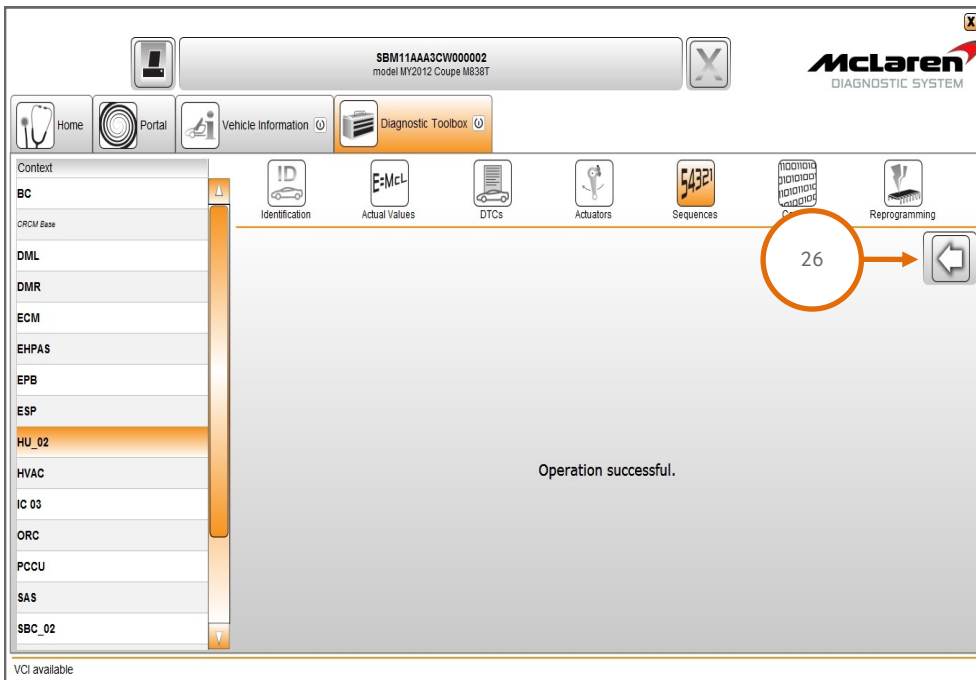
53. Select the relevant radio frequency option, followed by OK (24).



54. Is rear view camera fitted, select Yes or No (25).



55. Operation successful will be displayed. Select the back arrow (26) to exit the sequence.

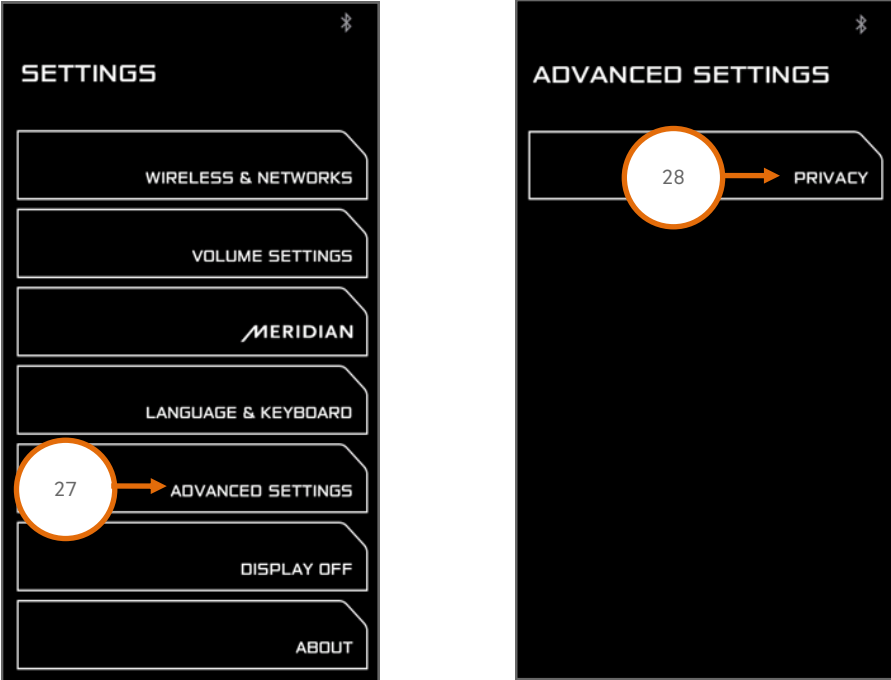


56. Wait until the system has fully rebooted before proceeding to the next step.

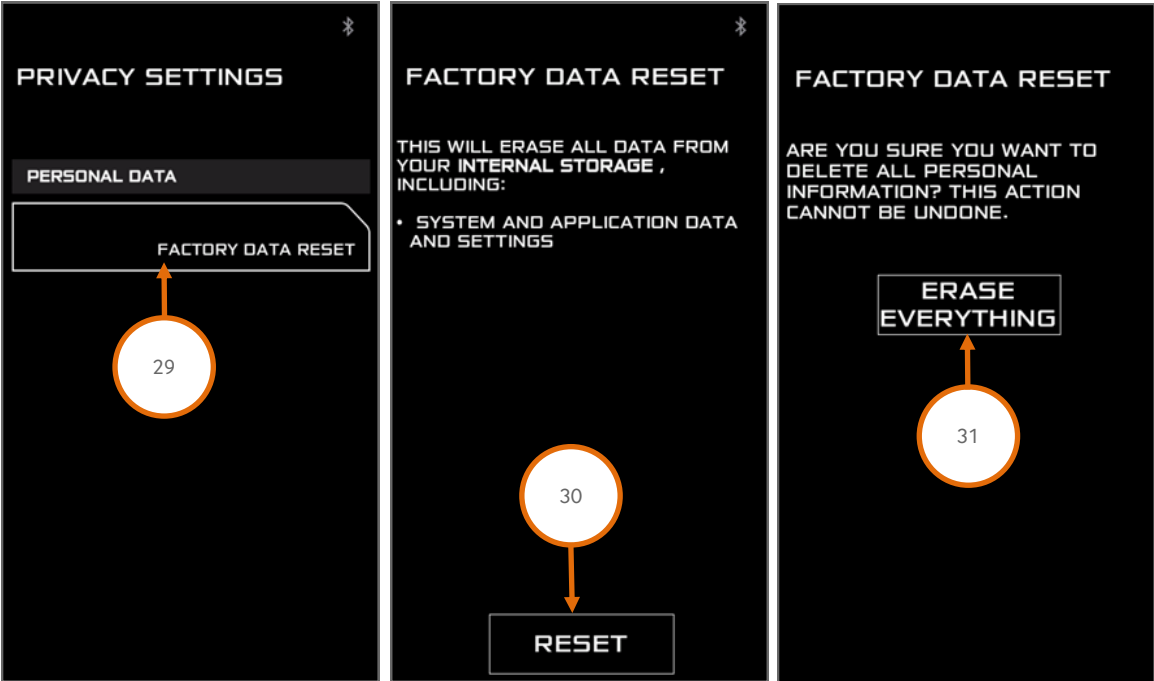
**Care Point:** Performing Factory Data Reset will delete the stored radio stations and paired phones.

57. Press the Settings hard button on the IRIS console.

58. Select Advanced Settings (27) and then Privacy (28) in order to access the Factory Data Reset.



59. Select Factory Data Reset (29) followed by Reset (30) and then Erase Everything (31).

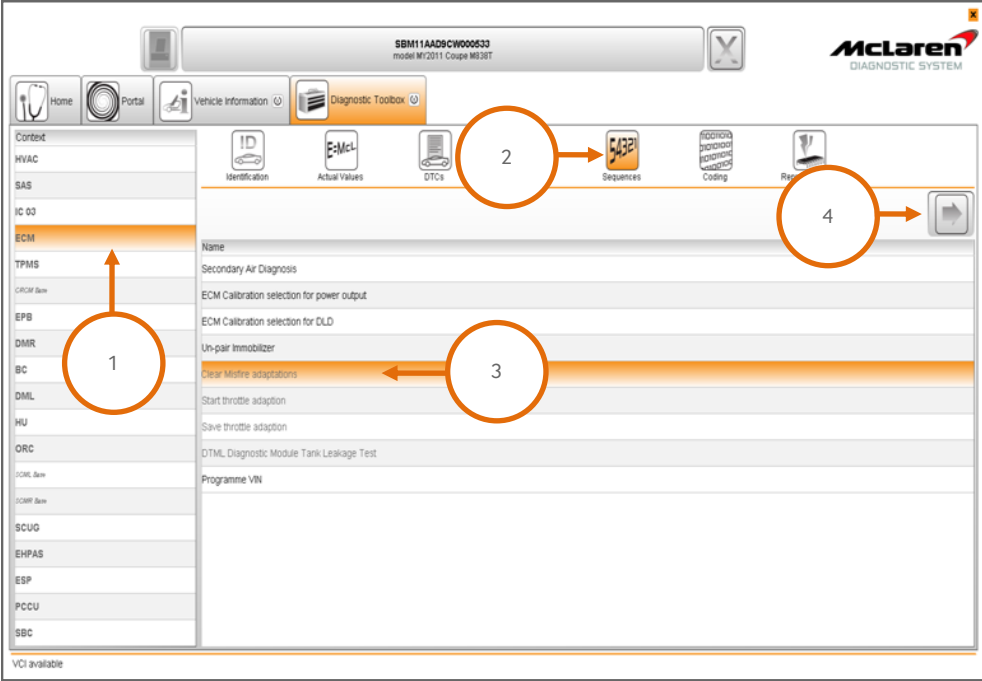


60. The system will reboot. The Factory Data Reset will be completed once the system has returned to the Standby Screen.

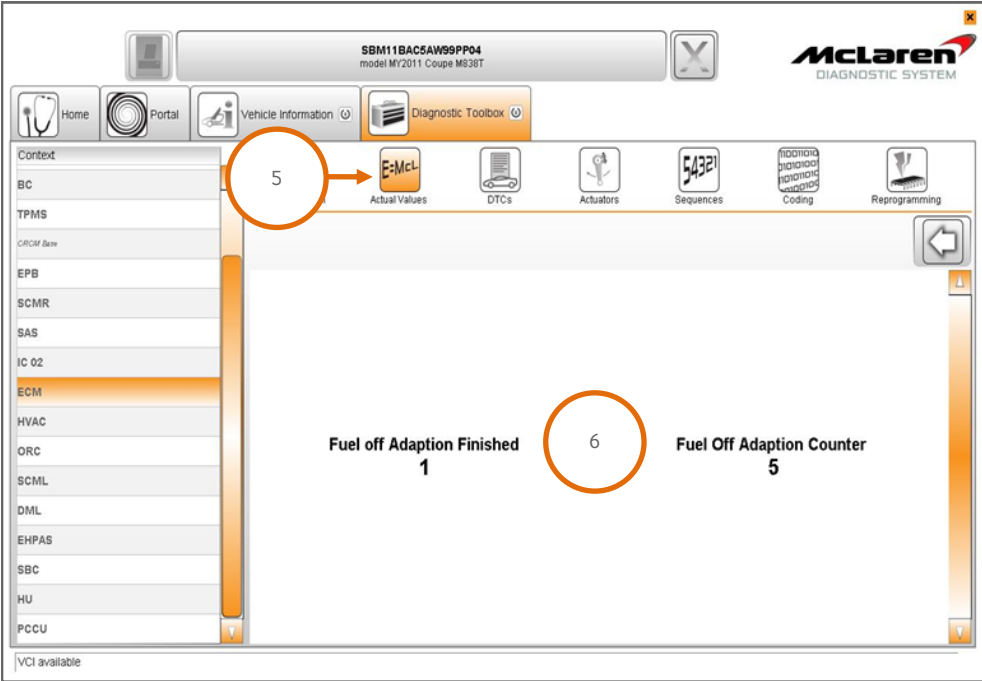
61. Wait until the system has fully rebooted, then switch the engine off and ignition back on.

**Adaptions Requirements:**

62. Select ECM (1), then Sequences (2), then Clear Misfire adaptations (3), followed by the arrow button (4) to proceed.



63. Select Actual Values (5), select the following values as per the screenshot below (6), then select the play button to access the required data screen.



64. Misfire adaptations are performed whilst the car is driven with the gearbox set to manual mode and with the A/C off. Perform eleven successive fuel cuts from above 4000rpm for a 5 second duration (a fuel cut off will occur when the accelerator pedal is fully released).

65. Once the Fuel off Adaption Counter reaches 11, the Fuel off Adaption Finished Counter will display 1; the misfire adaptations have been learned. The Fuel off Adaption Counter will display Zero and then start to count again when further fuel cut offs occur, this is correct operation and no further action is required.

Please contact your Regional Aftersales Manager should you have any questions relating to the information contained in this bulletin.

**Warranty Information:** Claim an additional 0.50 hours as an additional cost.

## WARRANTY INFORMATION

DESCRIPTION	RESOLUTION CODE	TOTAL REPAIR TIME
Software Platform Update to 4.5	MOM30110A3314A07	1.50 hours

## PARTS INFORMATION

DESCRIPTION	PART NUMBER	QUANTITY	ORDER PROCESS
N/A	N/A	N/A	N/A

All bulletins (Information/Campaign/Recall) issued by McLaren Automotive Limited ("McLaren") are intended only for use by technicians who have attended McLaren technical training courses. McLaren trained technicians have the equipment, tools, safety instructions and the know-how to perform the job properly and safely. McLaren Bulletins are written to inform McLaren technicians of conditions that may occur on some McLaren vehicles, or to provide information that could assist diagnosing a McLaren vehicle. Part numbers listed in McLaren bulletins are for reference only. Always check with the parts department to verify the latest part numbers. The information contained in McLaren bulletins are for internal use only by McLaren Authorised Retailers and must not be published on external website or social media forums etc.