



# TECHNICAL SERVICE BULLETIN

Release Date: 6/16/2016

*Indian Motorcycle*

Bulletin Number: I-16-01

Expiration Date: 12/31/2018

Model Year(s): 2015-2016

Safety Bulletin     Service Bulletin     Service Alert Fax     Production Update Kit

Distribution:  Owner / Principal     Service Manager     Sales Manager     Parts Manager     Technicians

*This Service Bulletin is located at [www.polarisdealers.com](http://www.polarisdealers.com)*

-Confidential and Proprietary-

## SUBJECT: 2015-2016 Indian Scout (69ci) – ECM Calibration Update

**This Service Bulletin must be performed prior to selling an affected unit!**

**NOTE: Does not affect Scout Sixty models**

### PURPOSE:

Indian Motorcycle has developed an updated ECM calibration for 2015-2016 Scout 69ci motorcycles that improves RPM stability at engine idle and during closed throttle conditions.

### WHAT YOUR DEALERSHIP SHOULD DO:

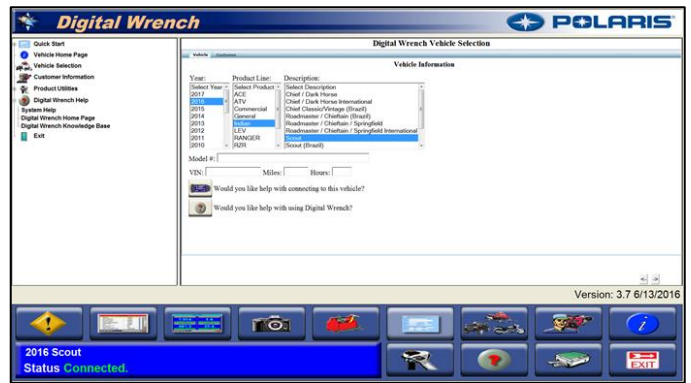
1. Review your dealership's inventory to locate potentially affected models.
  - a. Use 'Unit Inquiry'.

**OR**

  - b. Locate the 'Service and Warranty' dropdown, click on STOP Site.
  - c. On the left hand side of the page, under 'STOP Site Links' click on 'Service Bulletins'.
  - d. Locate the service bulletin number I-16-01 click on the 'All VINs' link located on the right.
  - e. The 'All VINs' page will display all affected VINs within your dealership's inventory.
2. Follow the instructions outlined in this Service Bulletin to perform the controller reflash.
3. File a warranty claim for bulletin I-16-01 immediately after completion of this bulletin.



6. Connect SmartLink Module cables to PC and vehicle.
7. Open the Digital Wrench program.
8. Select the model year, product line and vehicle description by selecting the “Change Vehicle Type” icon.



9. Select the **Special Tests** icon ①.
10. Select **Engine Controller Reprogramming** ②.

**STAGE 1:** If a motorcycle is equipped with STAGE 1 exhaust, Digital Wrench will identify and maintain the upgraded software calibration.

**IMPORTANT:**

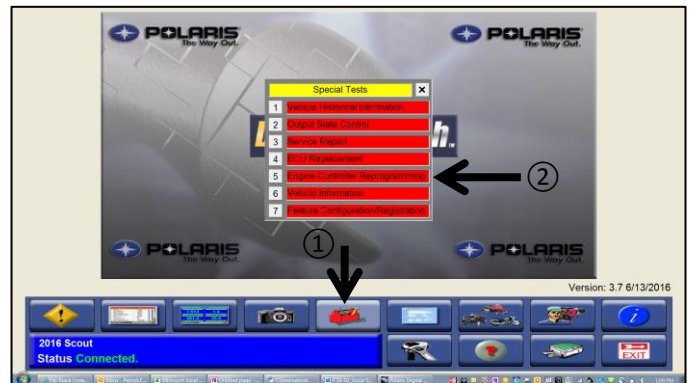
The reflash process may take up to **18 minutes** to complete. Make sure the vehicle battery is fully charged or connected to a battery charger before proceeding.

**CAUTION:**

Do not interrupt the update process once it has started or permanent damage to the module may occur.

11. Follow the on-screen prompts until the ECM update is complete.
12. At this time you should check / clear any stored fault codes, disconnect Digital Wrench and test ride the motorcycle.

**NOTE:** Re-flashed motorcycles lose any run memory that was stored in the vehicles ECU. The bike may need some run time under normal running conditions to re-learn normal running parameters.



## PARTS INFORMATION:

PART NUMBER / DESCRIPTION	7170107 (QTY.1) – Bulletin Completion Decal
PARTS AVAILABILITY	Available to order
DIRECT-SHIP FROM POLARIS?	No
TO BE ORDERED BY DEALER?	Yes – Order Bulletin Completion decals through normal parts channels

## WARRANTY CLAIM INFORMATION:

A single group claim may be submitted listing the complete (17 digit) Vehicle Identification Number for machines with the same model number. File claim type **SB (Service Bulletin)**. DO NOT PUT MORE THAN ONE MODEL NUMBER ON A CLAIM.

SERVICE BULLETIN #	I-16-01
CLAIM TYPE	SB (Service Bulletin)
LABOR ALLOWANCE	18 Minutes (0.3 Hours)
CLAIM PART NUMBERS	N/A – Auto Process Bulletin
BULLETIN EXPIRATION DATE	Service Bulletin I-16-01 will expire 12/31/2018

## CUSTOMER NOTIFICATION:

Dealers are required to notify owners of motorcycles sold by their dealership, and to make arrangements to perform this bulletin repair immediately.

## SERVICE BULLETIN COMPLETION DECAL:

A Service Bulletin Completion Decal must be completed for this bulletin repair. Place the decal on the unit as shown (beneath the fuse box, on battery hold-down bracket).

If you require more decals, order them through normal parts ordering channels.

Sincerely,



Doug Koch,  
Technical Service and Warranty Manager

