



Technical Journal

TITLE:

Lock switch in rear door panel sticks

REF NO:
TJ 32010.2.0

ISSUING DEPARTMENT:
Technical Service

CAR MARKET:
United States and Canada

PARTNER:
3 US 7510 Volvo Car USA

ISSUE DATE:
2016-11-10

STATUS DATE:
2016-12-22

FUNC GROUP:
8316

FUNC DESC:
COMP INNER DOOR

Page 1 of 6

“Right first time in Time”

Attachment

File Name	File Size
TJ 32010.pdf	1.1648 MB

Vehicle Type

Type	Eng	Eng Desc	Sales	Body	Gear	Steer	Model Year	Plant	Chassis range	Struc Week Range
256							2016-2016		0000561-0027179	201505-201535

CSC Customer Symptom Codes

Code	Description
LM	Battery/Dead battery
LN	Battery/Weak or low electrical power
6J	Text window and warning symbol/Low battery
IV	Text window and warning symbol/Text message
TU	Central locking/Central locking by using button in door panel does not work

VST Operation Number

VST Operation Number	Description
98647-2	Central locking switch 2 sides adjust acc. to TJ32010

DTC Diagnostic Trouble Codes



Text

DESCRIPTION:

It may be possible for the rear door lock switch to get stuck in the speaker grille. This can lead to a drained battery. Applies only for cars with Premium or High Performance stereo.

SERVICE:

Check for/remove edges in the hole for the button in the speaker grille. Follow attached method "TJ 32010.pdf" or the video "Speaker_Grill.mp4".

VEHICLE REPORT:

Yes, please submit a Vehicle Report if the service solution described in this TJ has no effect or if vehicles is outside of the affected structure week.. Use concern area "Vehicle Report" and sub concern area "Support not needed", use function group 8316.

To view TJ attachment continue to next page. This TJ has one attachment.



Volvo Car Customer Service

TJ 32010

Title	Central locking switch	Page	1 (4)
Action	Product fix	Operation number:	98647-2

Affected vehicles

Model year	Model
2016	XC90 (16-)

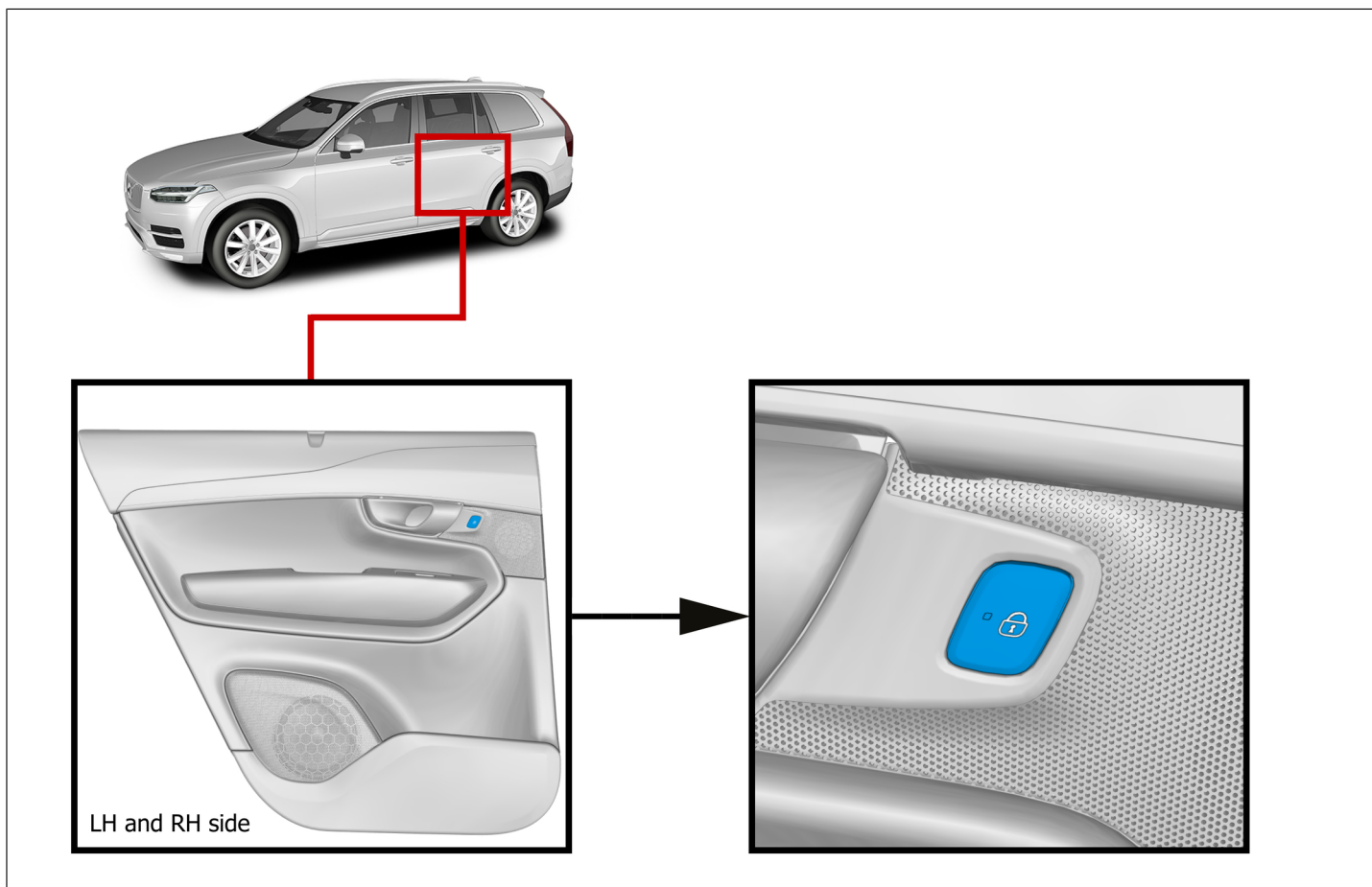
Special tools

Description	Part No.
Interior trim remover	981 4071

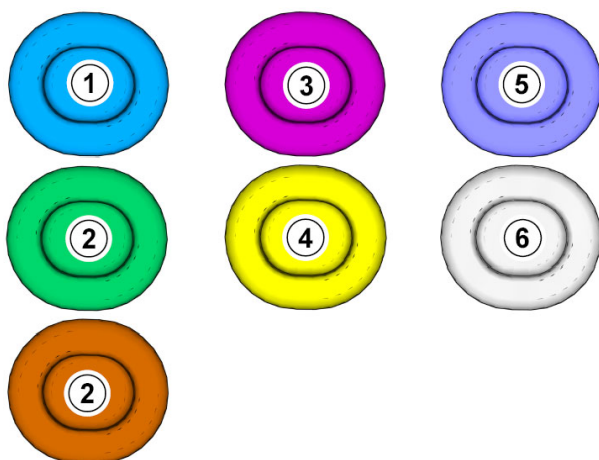
Equipment

Designation	Part No.
Electrician's screwdriver	

Image philosophy



Color symbols



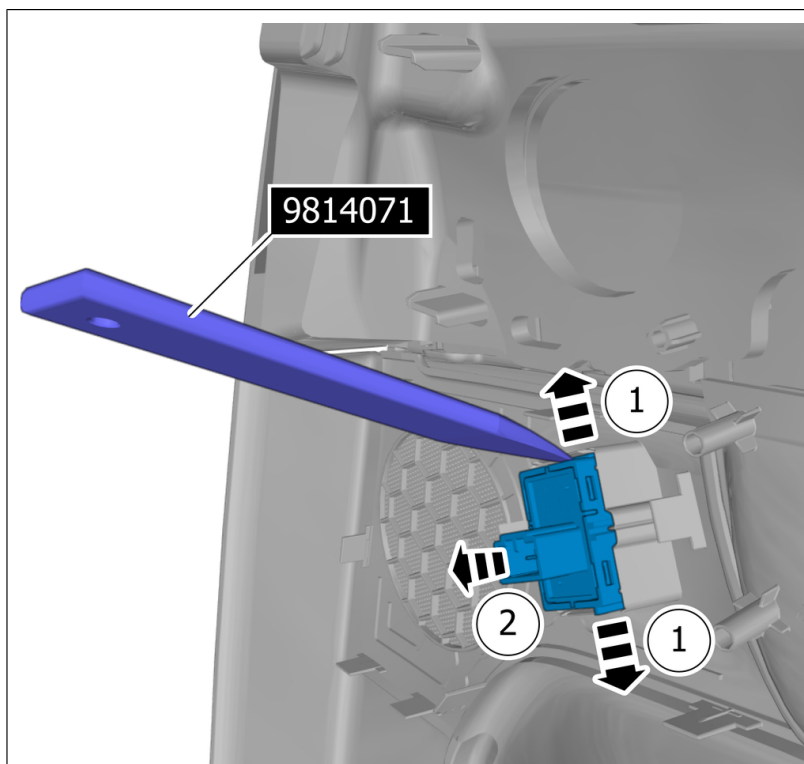
Note! This colour chart displays (in colour print and electronic version) the importance of the different colours used in the images of the method steps.

- 1 . Used for focused component, the component with which you will do something.
- 2 . Used as extra colors when you need to show or differentiate additional parts.
- 3 . Used for attachments that are to be removed/installed. May be screws, clips, connectors, etc.
- 4 . Used when the component is not fully removed from the vehicle but only hung to the side.
- 5 . Used for standard tools and special tools.
- 6 . Used as background color for vehicle components.

Removal

Remove panel side door rear , refer to:
Removal, replacement and installation
8 - Body and interior
85 - Interior
851 - upholstery for wall/door, side, rear
shelf, luggage rack

On both sides.



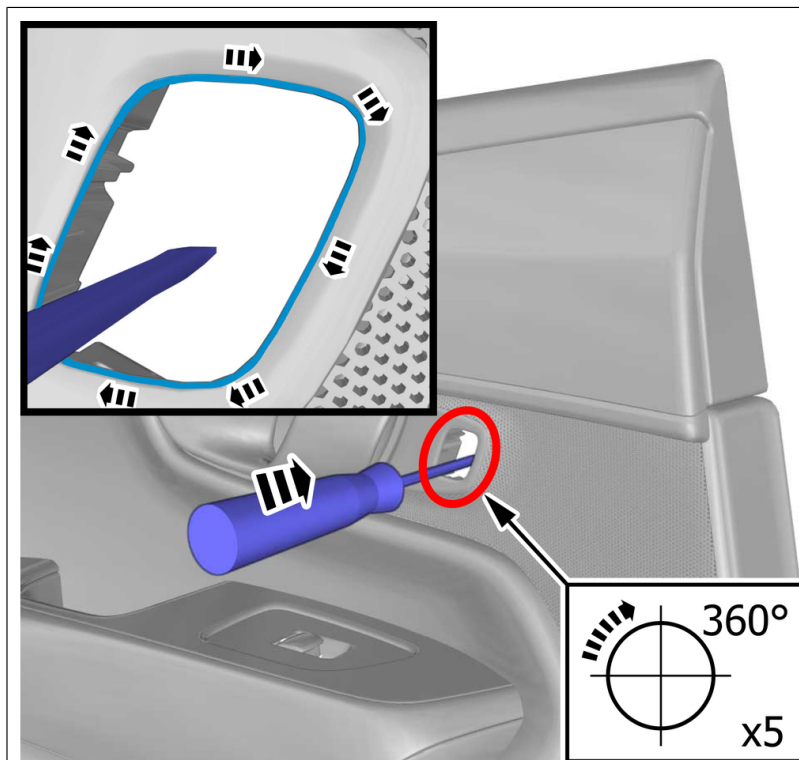
Disconnect the connector.

- 1 . Release the catches.
- 2 . Remove the marked part.

On both sides.

Special Tool: T9814071, Interior trim remover

Adjustment



Caution! Sharp edge. Risk of injury.

Caution! Make sure that equal pressure is applied to the full length of the component.

Use: Electrician's screwdriver

Use hands only.

On both sides.

Check that all defects are gone.

To install, reverse the removal procedure.

Check

Press the button.
Check for correct operation.
On both sides.