



SI B51 07 16  
Body Equipment

February 2016  
Technical Service

## SUBJECT

Noises from B-pillar Trim

## MODEL

F36 (4 Series Coupe)

Produced from February 28, 2015 to October 31, 2015

## SITUATION

Noise/rattle can occur from the left or right side interior B-pillar trim while driving

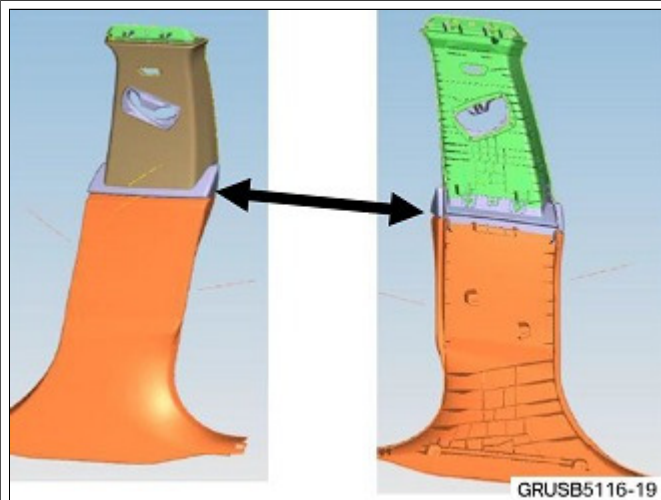
## CAUSE

Burred edge on the inside trim of the lower B-pillar

## CORRECTION

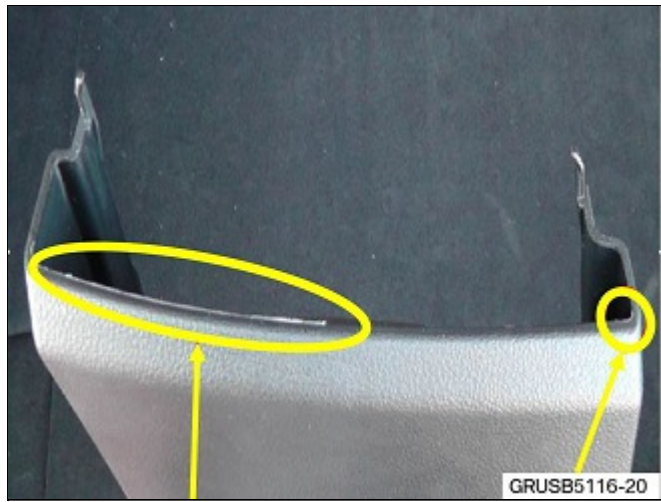
Grind off raised burr of the interior lower B-pillar trim.

## PROCEDURE



1. Use Repair Instruction 51 43 150 and remove the affected interior lower B-pillar trim.
  - The noise can occur where the upper and lower B-pillar trims meet.

2. Remove the burr from the lower trim with appropriate tool such as grinder, file, sandpaper or



knife.



3. This is a closer look at the raised burr that needs to be removed.

**WARRANTY INFORMATION**

Covered under the terms of the BMW New Vehicle Limited Warranty for Passenger Cars and Light Trucks.

<b>Defect Code:</b>	<b>51 43 05 39 00</b>
---------------------	-----------------------

**Repairing One Side**

<b>Labor Operation:</b>	<b>Labor Allowance:</b>	<b>Description:</b>
51 43 150	KSD2	Removing and installing or replacing trim panel for lower door pillar (Main work)
And:		

51 99 000	2 FRU	Work time for removing the existing burr from one panel of lower door pillar
-----------	-------	--

If you are using a Main labor code for another repair, use the Plus code labor operation 51 43 650 instead.

Or:

### Repairing Both Sides

Labor Operation:	Labor Allowance:	Description:
51 43 170	KSD2	Removing and installing or replacing trim panel for both left and right lower door pillar (Main work)
And:		
51 99 000	4 FRU	Work time for removing the existing burrs from both left and right lower door pillar (Plus work)

If you are using a Main labor code for another repair, use the Plus code labor operation 51 43 670 instead.

Work time labor operation code 51 99 000 is not considered a Main labor operation. Also, since the “work time” FRU allowance to be claimed is specified, a separate punch time is not required.

[ Copyright ©2016 BMW of North America, Inc. ]