



SI B51 06 16
Body Equipment

February 2016
Technical Service

SUBJECT

Whistling Noise from the B-pillar

MODEL

F34 (3 Series Gran Turismo)

Produced from February 28, 2014 to July 15, 2015

SITUATION

A whistling noise can be heard from the left or right side B-pillar area when the sunroof is open or tilted at highway speeds.

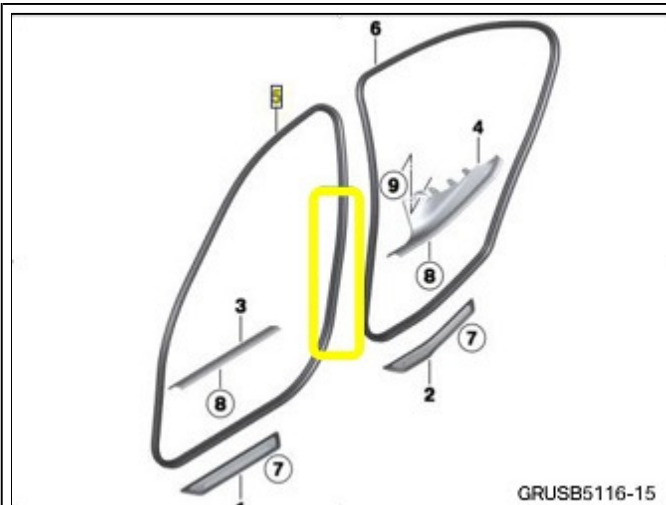
CAUSE

Edge protection on the B-pillar

CORRECTION

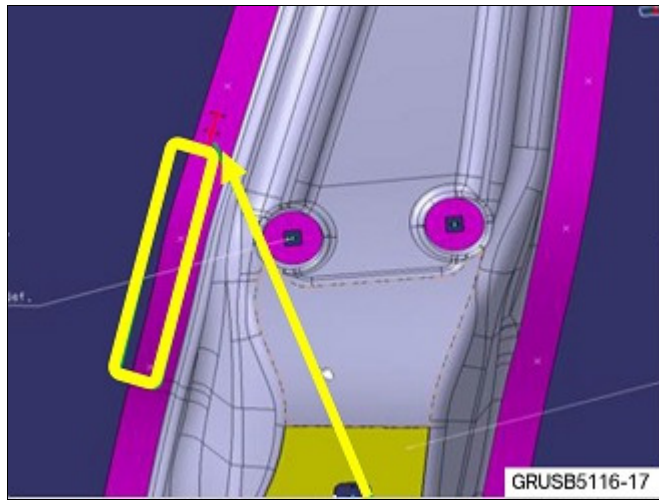
Apply self-adhesive felt tape to the affected B-pillar.

PROCEDURE



1. Remove the edge protection seal in the area of the B-pillar at the height of the door lock.

- The drawing shows the approximate area where the



whistling noise can occur.



- The exposed area can create a whistling noise a higher speeds and various sunroof openings.

2. Prepare four self-adhesive strips (150 mm long x 15 mm wide) and stack on top of each other and apply to the lowest marker line of the side panel as shown.



- The finished felt process should look like the picture.

3. Re-install the door edge protect seal.

PARTS INFORMATION

Part Number	Description	Quantity
51 45 2 353 024	Set of Self-adhesive felt tape	As needed

WARRANTY INFORMATION

Covered under the terms of the BMW New Vehicle Limited Warranty for Passenger Cars and Light Trucks.

Defect Code:	51 72 00 41 00	
---------------------	----------------	--

Repairing One Side

Labor Operation:	Labor Allowance:	Description:
51 99 000	3 FRU	Prepare 4 pieces of self-adhesive felt tape to the affected side B-pillar (Main work)
Or:		
51 99 000	2 FRU	Prepare 4 pieces of self-adhesive felt tape to the affected side B-pillar (Plus work)

Or:

Repairing Both Sides

Labor Operation:	Labor Allowance:	Description:
51 99 000	6 FRU	Prepare 8 pieces of self-adhesive felt tape to the both left and right side B-pillars (Main work)
Or:		
51 99 000	5 FRU	Prepare 8 pieces of self-adhesive felt tape to the both left and right side B-pillars (Plus work)

And:

Sublet – Bulk Materials

	See sublet reimbursement	Reimbursement for the repair-related bulk materials (BMW part number,
--	--------------------------	---

Sublet Code 4	calculation below	please do not use the part numbers for claim submission)
---------------	-------------------	--

Sublet reimbursement calculation for claiming the “used quantities” of repair-related bulk materials (BMW part numbers) is at dealer net plus your center’s handling.

Enter this material cost in sublet and itemize the amount on the repair order and in claim comment section.

[Copyright ©2016 BMW of North America, Inc.]