

IMPORTANT UPDATE SEPTEMBER 8, 2016

TECHNICAL INSTRUCTIONS FOR SPECIAL SERVICE CAMPAIGN BST SMART STOP TECHNOLOGY (ECM) REFLASH

2009-2010 COROLLA
2009-2010 COROLLA MATRIX
2008-2010 LAND CRUISER
2006-2010 RAV4
2008-2010 HIGHLANDER
2003-2009 4RUNNER
2007-2010 TUNDRA

UPDATED SEPTEMBER 8, 2016

Update 9/8/2016

- The TI has been updated to reflect that BST is now a Special service Campaign with no expiration date.

Update 3/31/2014

- The TI has been updated to include the calibrations for the third phase of vehicles.

(SECTION II and SECTION V)

Update 12/11/2013

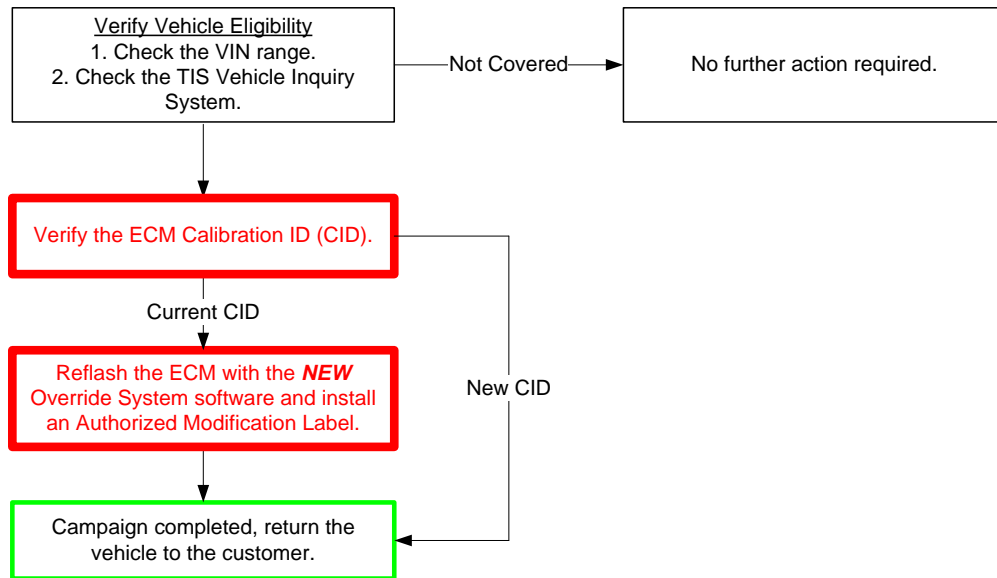
- The TI has been updated to include the calibrations for the second phase of vehicles.

(SECTION II and SECTION V)

The repair quality of covered vehicles is extremely important to Toyota. All dealership technicians performing this SSC are required to successfully complete the most current version of the E-Learning course "Safety Recall and Service Campaign Essentials". To ensure that all vehicles have the repair performed correctly; technicians performing this SSC repair are required to currently hold at least one of the following certification levels:

- Certified Technician (any classification)
- Expert Technician (any classification)
- Master Technician
- Master Diagnostic Technician

I. OPERATION FLOW CHART



II. IDENTIFICATION OF AFFECTED VEHICLES

NOTE:

- Check the TIS Vehicle Inquiry System to confirm the VIN is covered in this Special Service Campaign, and that the campaign has not already been completed prior to dealer shipment or by another dealer.
- TMS warranty will not reimburse dealers for repairs conducted on vehicles that are not affected or were completed by another dealer.

III. PREPARATION

A. PARTS

Part Number	Part Description	Quantity
00451-00001-LBL	Authorized Modification Label*	1

*Labels can be ordered in packs of 25 from the MDC through Dealer Daily website

B. TOOLS & EQUIPMENT

- Techstream 2.0 / TIS Techstream /Techstream Lite (Software 7.31 or Higher)
- GR8 Battery Diagnostic Station

IV. BACKGROUND

In our continuing effort to ensure the best in customer satisfaction, Toyota has converted Limited Service Campaign (LSC) BST into Special Service Campaign (SSC) BST with no expiration date.

Toyota will install Smart Stop Technology on the below listed model and model year vehicles. This feature will cut engine power in case of simultaneous application of both the accelerator and brake pedals at certain speeds and in certain driving conditions.

V. ECM CALIBRATION ID VERIFICATION

1. CONFIRM THE ECM CALIBRATION ID

- Perform a health check and confirm no DTCs are present.
- Confirm the current calibration ID in the ECM.
- Referencing the table below, verify if the ECM has the Updated Calibration

Model	Model Year	Engine	Transmission	Current CID	New CID		
Corolla	2009	2AZFE	MT	30270000 30270100	30270200		
			5AT	30288000 30288100 30288200 30288300	30288400		
		2ZRFE	MT	30285000 30285100 30285200 30285300 30285400 30285500	30285600		
				302G9000 302G9100 302G9200 302G9300 302G9400	302G9500		
				AT	302A4000 302A4100 302A4200 302A4300 302A4400 302A4500	302A4600	
			302G8000 302G8100 302G8200 302G8300 302G8400		302G8500		
			2010		2AZFE	MT	302J2000 302J2100
				5AT		302J1000 302J1100 302J1200	302J1300
	2ZRFE	MT	302G9000 302G9100 302G9200 302G9300 302G9400	302G9500			
		AT	302G8000 302G8100 302G8200 302G8300 302G8400	302G8500			

Model	Model Year	Engine	Transmission	Current CID	New CID		
Matrix	2009	2AZFE	MT	30270000 30270100	30270200		
			5AT	30280000 30280100 30280200 30280300	30280400		
				30282000 30282100 30282200 30282300	30282400		
		30283000 30283100		30283200			
		MT		30285000 30285100 30285200 30285300 30285400 30285500	30285600		
			302G9000 302G9100 302G9200 302G9300 302G9400	302G9500			
			AT	30284000 30284100 30284200 30284300 30284400 30284500	30284600		
				302J5000 302J5100 302J5200 302J5300 302J5400	302J5500		
				2010	2AZFE	MT	302J2000 302J2100
		5AT				302J7000 302J7100 302J7200	302J7300
	302J8000 302J8100 302J8200		302J8300				
	4WD		302J9000 302J9100		302J9200		
	2ZRFE	MT	302G9000 302G9100 302G9200 302G9300 302G9400	302G9500			
		AT	302J5000 302J5100 302J5200 302J5300 302J5400	302J5500			

Model	Model Year	Engine	Transmission	Current CID	New CID
Land Cruiser	2008-2009	3URFE	AT	360C2000 360C2100 360C2200 360C2300 360C2400 360C2500	360C2600
	2010	3URFE	AT	360D8000 360D8100	360D8200
Highlander	2008-2010	2GRFE	2WD	348A7000 348A7100 348A7200 348E6000 348E6100	348E6200
			4WD	348A8000 348A8100 348A8200 348E7000 348E7100	348E7200
	2009-2010	1ARFE	2WD	348E3000 348E3100	348E3200
RAV4	2006	2GRFE	2WD	34265000 34265100	34265200
			4WD	34264000 34264100	34264200
	2007	2GRFE	2WD	34276000	34276100
			4WD	34275000	34275100
	2006-2008	2AZFE	2WD	34248000 34248100 34271000 34271100 34282000 34282100 34282200	34282300
			4WD	34249000 34249100 34272000 34272100 34283000 34283100 34283200	34283300
		2GRFE	2WD	34285000 34285100 34285200	34285300
			4WD	34286000 34286100 34286200	34286300
	2009-2010	2ARFE	2WD	34287000 34287100 342F0100 342F0200	342F0300
			4WD	34288000 34288100 342F1100 342F1200	342F1300
		2GRFE	2WD	342A1000 342A1100 342A1200	342A1300
			4WD	342A3000 342A3100 342A3200	342A3300

Model	Model Year	Engine	Transmission	Current CID	New CID	
4Runner	2003-2004	1GR	2WD	33519000	33529300	
				33529000		
			33529100			
			33529200			
		4WD	33520000	33530300		
			33530000			
			33530100			
			33530200			
	2UZ	2WD	33514000		33523300	
			33514100			
			33514200			
			33523000			
		4WD	33523100	33527300		
			33523200			
			33515000			
			33515100			
	2005	1GR	2WD		33534000	33534300
					33534100	
			33534200			
			33535000			
		4WD	33535100	33535300		
			33535200			
			33531000			
			33531100			
	2UZ	2WD	33531200	33531300		
			33532000			
		4WD	33532100	33532300		
			33532200			
2006	1GR	2WD	33542000	33542200		
			33542100			
		4WD	33543000		33543200	
			33543100			
	2UZ	2WD	33540000	33540200		
			33540100			
		4WD	33541000		33541200	
			33541100			
2007	1GR	2WD	33548000	33548400		
			33548100			
		4WD	33548200		33549400	
			33548300			
	2UZ	2WD	33549000	33550200		
			33549100			
		4WD	33549200			33551200
			33549300			
2008	1GR	2WD	33550000	33561200		
			33550100			
		4WD	33551000		33562200	
			33551100			
	2UZ	2WD	33561000	33564100		
			33561100			
		4WD	33562000		33565100	
			33562100			
2009	1GR	2WD	33564000	33570200		
			33565000			
		4WD	33570000		33571200	
			33570100			
	2UZ	2WD	33571000	33572100		
			33571100			
		4WD	33572000		33573100	
			33573000			

Model	Model Year	Engine	Transmission	Current CID	New CID	
Tundra	2007	1GR	2wd	30C50000 30C50100 30C75000 30C75100	30C50200	
		2UZ	2WD (Tow)	30C52000 30C52100 30C52200	30C52300	
			2WD	30C54000 30C54100 30C54200	30C54300	
			4WD (Tow)	30C53000 30C53100 30C53200	30C53300	
			4WD	30C55000 30C55100 30C55200	30C55300	
		3UR-FE	2WD (Tow)	30C58000 30C58100 30C58200 30C58300	30C58400	
			2WD	30C57000 30C57100 30C57200 30C57300	30C57400	
			4WD (Tow)	30C60000 30C60100 30C60200 30C60300	30C60400	
			4WD	30C59000 30C59100 30C59200 30C59300	30C59400	
		2008	1GR-FE	2WD	30C86000 30C86100 30C87000 30C87100	30C86200
			2UZ-FE	2WD (Tow)	30C76000 30C76100 30C76200	30C76300
				2WD	30C78000 30C78100	30C78200
	4WD (Tow)			30C77000 30C77100	30C77200	
	4WD			30C79000 30C79100	30C79200	
	2009	1GR-FE	2WD	30CB1000 30CB2000	30CB1100	
		2UZ-FE	2WD (Tow)	30CB6000	30CB6100	
			2WD	30CB8000	30CB8100	
			4WD (Tow)	30CB7000	30CB7100	
			4WD	30CB9000	30CB9100	
		3UR-FBE	4WD (Tow)	30CA0000 30CA0100	30CA0200	
	4WD		30C89000 30C89100	30C89200		

Model	Model Year	Engine	Transmission	Current CID	New CID	
Tundra	2008-2009	3UR-FE	2WD (Tow)	30C83000 30C83100 30C83200 30CA4000 30CA4100 30CA4200	30CA4300	
			2WD	30C82000 30C82100 30C82200 30CA3000 30CA3100 30CA3200	30CA3300	
			4WD (Tow)	30C85000 30C85100 30C85200 30CA6000 30CA6100 30CA6200	30CA6300	
			4WD	30C84000 30C84100 30C84200 30CA5000 30CA5100 30CA5200	30CA5300	
	2010	1GR-FE	2WD	30CD8000 30CD8100	30CD8200	
			2WD (Tow)	30C61000 30C61100 30C61200	30C61300	
				2WD	30CC5000 30CC5100	30CC5200
			4WD (Tow)	30C62000 30C62100 30C62200	30C62300	
				4WD	60CC6000 30CC6100	30CC6200
			3UR-FBE	4WD (Tow)	30CD7000 30CD7100	30CD7200
				4WD	30CD6000	30CD6100
			3UR-FE	2WD (Tow)	30CD1000 30CD1100 30CD1200	30CD1300
				2WD	30CD0000 30CD0100	30CD0200
				4WD (Tow)	30CD3000 30CD3100 30CD3200	30CD3300
	4WD	30CD2000 30CD2100			30CD2200	



- If the ECM has already been calibrated with the new calibration the campaign is complete.

VI. ECM REFLASH PROCEDURE



- For general reprogramming procedures, refer to [T-SB-0012-13](#).
- Confirm the latest version of Techstream software is being used.
- If the Techstream does not have sufficient battery power the reflash will fail.
- Confirm the DLC3 cable is in good condition before attempting reflash.
- If vehicle exhibits any trouble codes or drivability symptoms, diagnose and repair using TIS before attempting to reprogram the ECM.

1. CONNECT THE GR8

- a) Set the GR8 to Power Supply Mode to help maintain 13.5 volts during ECM reprogramming.



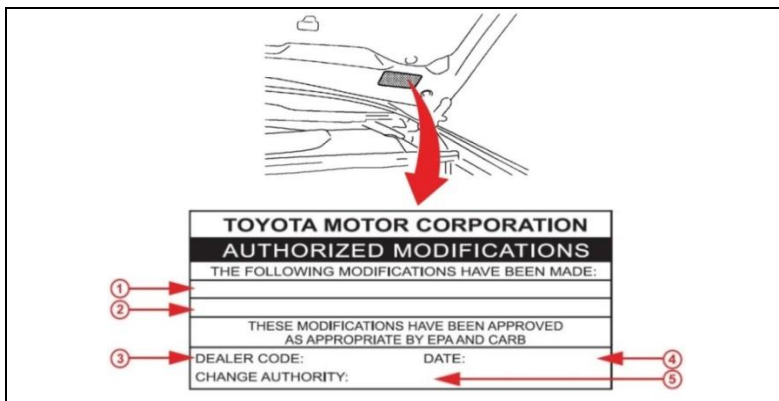
- A battery charger set to power supply mode **MUST** be used during reprogramming.
- ECM damage may occur if the correct battery charger setting is not used.

2. REFLASH THE ECM

- a) Click yes on the health check results screen, or follow the links on the table above to begin the reflash process.

3. ATTACH THE AUTHORIZED VEHICLE MODIFICATION LABEL

- a) Fill out the label.
- b) Affix the label to the under-side of the hood.



1	Replacement ECM P/N
2	New Calibration ID
3	Dealer Code
4	Date Completed
5	Campaign Code (BST)

4. CHECK FOR DTCs

◀ VERIFY REPAIR QUALITY ▶

- Confirm the GR8 is set up properly prior to beginning the reprogramming
- Confirm the reflash completes successfully
- Confirm the Authorized Vehicle Modification Label is filled out and affixed to the vehicle
- Confirm there are no DTCs in the ECM

If you have any questions regarding this update, please contact your regional representative

VII. APPENDIX

A. CAMPAIGN DESIGNATION DECODER

