



SI B13 08 15  
Fuel Systems

August 2016  
Technical Service

## Service Action: S63 Engine – Check and Replace High-Pressure Injectors

This Service Information bulletin supersedes SI B13 08 15 **dated January 2016**

Please perform the procedure outlined in this Service Information on all affected vehicles before customer delivery. In the event the customer has already taken delivery of the vehicle, please perform the procedure the next time the vehicle is in the shop.

### MODEL

E70 (X5M)	E71 (X6M)
-----------	-----------

### SITUATION


The high-pressure injectors may fail, resulting in an engine malfunction warning and reduced engine output.

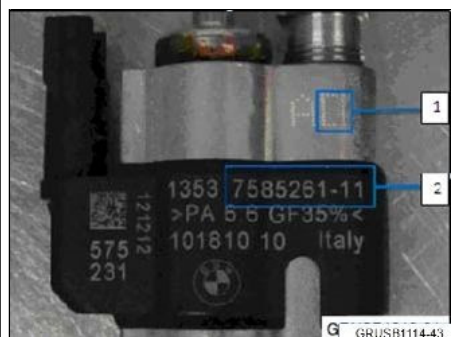
### AFFECTED VEHICLES

This Service Action involves E70 and E71 vehicles with the S63 engine produced from March 1, 2009 to April 30, 2013.

Vehicles which require this Service Action to be completed will show it as “Open” when checked either in the “Service Menu” of DCSnet (Dealer Communication System) or with the Key Reader.

### PROCEDURE

	<ol style="list-style-type: none"> <li>1. Use a bore scope (1) or similar (mirror) to help identify the injector index number on the injector (2).</li> </ol> <p>Do not remove the injector to identify the index number.</p>
	<ol style="list-style-type: none"> <li>2. Perform the injector index number evaluation on both cylinder banks.</li> </ol> <p>As of January 2013, an improved injector is available. Two distinct markings on the injector</p>



itself will identify the improved injector.

1 = Internal material improvement

2 = 7585261 – (Index) 11 or greater

The injector improvements consist of an internal filter and an optimized thermal compensating oil.

3. All injectors that are not index 11 or higher will need to be replaced. Use **P/N 13 53 8 648 937** when replacing the injector(s).

If the injector index number is already 11 or greater, take no further action regarding injector repairs.

**IMPORTANT: Injectors with index 11 and higher have a different calibration and construction than injectors with index 10 and lower. Due to this difference, injectors with index 11 and higher and injectors with index 10 and lower cannot be mixed on the same engine bank (i.e., cylinders 1-4 or 5-8).**

4. Refer to repair instruction 13 53 721 Replacing one injector, cylinder bank 1-4 (S63) if only the injectors on cylinder bank 1 need to be replaced.

Refer to repair instruction 13 53 722 Replacing one injector, cylinder bank 5-8 (S63) if only the injectors on bank 2 need to be replaced.

If the injectors on both cylinder banks need to be replaced then refer to both of the repair instructions stated above.

## PARTS INFORMATION



**Warning:** The part number listed in ETK for these vehicles is not the correct part to use for this repair, request and invoice quantity of the part numbers specified below only.

Part Number	Description	Quantity
13 53 8 648 937	High-pressure injector	Up to 8 (as required)
13 53 8 651 060	Decoupling element	Up to 8 (as required)



**Performing a part number look-up in ETK by VIN or model will result with the wrong part number and part being invoiced and installed.**

## WARRANTY INFORMATION

Reimbursement for this Service Action will be via normal claim entry utilizing the following information:

<b>Defect Code:</b>	<b>00 13 50 02 00</b>
---------------------	-----------------------

### Only Checking the Fuel Injectors is Required

<b>Labor Operation:</b>	<b>Labor Allowance:</b>	<b>Description:</b>
00 63 170	Refer to KSD2	Check all injectors (No repair is necessary) <b>(Main Work)</b>

Or:

### Cylinder Bank 1 – 4: Replacing One (1) Fuel Injector

<b>Labor Operation:</b>	<b>Labor Allowance:</b>	<b>Description:</b>
00 63 171	Refer to KSD2	Check fuel injectors and replace <b>one (1) (cylinders 1-4) (Main work)</b>

And, as necessary:

### For Each Additional Fuel Injector on Cylinder Bank 1 – 4 Only (Work time)

<b>Labor Operation:</b>	<b>Labor Allowance:</b>	<b>Description:</b>
00 63 174	2 FRU	Replacing <b>one (1)</b> additional fuel injector, <b>two (2) total</b> on this bank
Or:		
00 63 174	4 FRU	Replacing <b>two (2)</b> additional fuel injectors, <b>three (3) total</b> on this bank
Or:		
00 63 174	6 FRU	Replacing <b>three (3)</b> additional fuel injectors, <b>four (4) total</b> on this bank

Or:

### Cylinders Bank 5 – 8: Replacing One (1) Fuel Injector

<b>Labor Operation:</b>	<b>Labor Allowance:</b>	<b>Description:</b>
		Check fuel injectors and replace <b>one</b>

00 63 172	Refer to KSD2	<b>(1) (cylinders 5-8) (Main work)</b>
-----------	---------------	--

And, as necessary:

**For Each Additional Fuel Injector on Cylinder Bank 5 – 8 Only (Work time)**

<b>Labor Operation:</b>	<b>Labor Allowance:</b>	<b>Description:</b>
00 63 174	2 FRU	Replacing <b>one (1)</b> additional fuel injector, <b>two (2) total</b> on this bank
Or:		
00 63 174	4 FRU	Replacing <b>two (2)</b> additional fuel injectors, <b>three (3) total</b> on this bank
Or:		
00 63 174	6 FRU	Replacing <b>three (3)</b> additional fuel injectors, <b>four (4) total</b> on this bank

Or:

**Both Cylinder Banks - Replacing at least One (1) Fuel Injector on Each Side**

<b>Labor Operation:</b>	<b>Labor Allowance:</b>	<b>Description:</b>
00 63 173	Refer to KSD2	Check the injectors and replacing <b>one (1)</b> fuel injector for <b>cylinders 1-4</b> and <b>one (1)</b> injector for <b>cylinders 5-8</b> , <b>two (2) in total (Main work)</b>

And, as necessary:

**For Each Additional Fuel Injector on either Cylinder Bank (Work time)**

<b>Labor Operation:</b>	<b>Labor Allowance:</b>	<b>Description:</b>
00 63 174	2 FRU	Replacing <b>one (1)</b> additional fuel injector, <b>three (3) total</b>
Or:		
00 63 174	4 FRU	Replacing <b>two (2)</b> additional fuel injectors, <b>four (4) total</b>
Or:		
00 63 174	6 FRU	Replacing <b>three (3)</b> additional fuel injectors, <b>five (5) total</b>

Or:		
00 63 174	8 FRU	Replacing <b>four (4)</b> additional fuel injectors, <b>six (6) total</b>
Or:		
00 63 174	10 FRU	Replacing <b>five (5)</b> additional fuel injectors, <b>seven (7) total</b>
Or:		
00 63 174	12 FRU	Replacing <b>six (6)</b> additional fuel injectors, <b>eight (8) total</b>

Special “work time” labor operation code 00 63 174 is not considered a Main labor operation. Also, since the “work time” FRU allowance to be claimed is specified, a separate punch time is not required.

**Note: Claim labor operation code “00 63 174” only one time for the “total work time FRU allowance” that corresponds to the number of fuel injectors being replaced.**

And, also as necessary:

#### Sublet Materials

Sublet Code 4	See sublet reimbursement calculation below	Reimbursement for replacement quantities of required operating fluids and materials (applicable BMW part numbers. Do not use these part numbers for claim submission)
---------------	--	---

Sublet calculation: Reimbursement for replacement quantities of required operating fluids and materials (applicable BMW part numbers) at dealer net plus handling.

Enter this material cost in sublet and itemize the amount in the claim comment section.



#### Overlapping Labor – Other Repairs

If invoicing KSD2 flat rate labor operation codes for the additional repair work results in overlapping labor being claimed, please invoice work time labor operation 00 50 000 for the additional time (FRU) minus the overlap instead.

Work time labor operation code 00 50 000 is not considered a Main labor operation.

On the repair order and in the claim comment section, please identify the labor operations that labor operation code 00 50 000 replaces and itemize the claimed FRU amount.

**Associated Repairs:** When work time labor operation 00 50 000 is used as an extension of the repair outlined in this bulletin, a separate defect code and punch time(s) are not required.

**Other Repairs:** When work time labor operation 00 50 000 is used for work that will be claimed under a different defect code, separate punch time(s) are required.

[ Copyright ©2016 BMW of North America, Inc. ]