



SI B51 45 16
Body Equipment

December 2016
Technical Service

SUNROOF NOISE WHILE DRIVING

MODEL

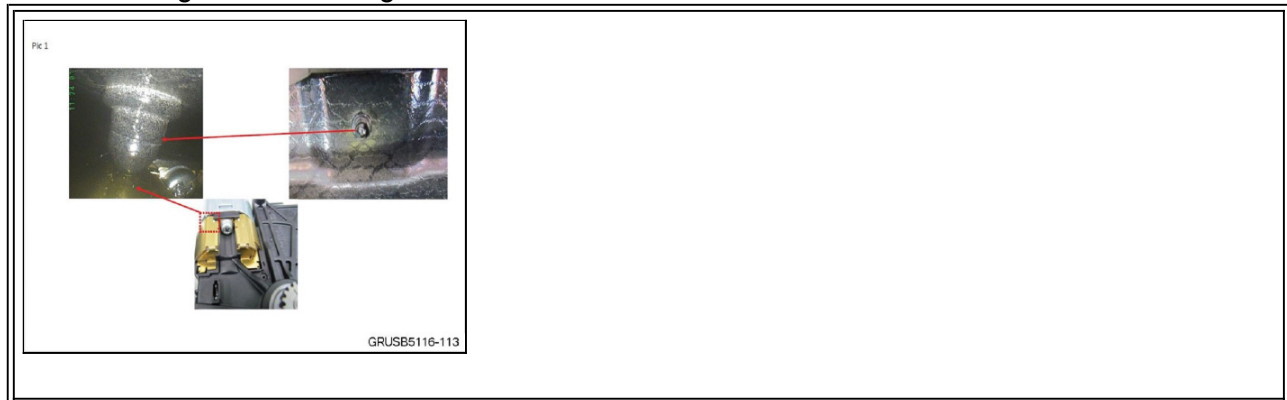
G12 (7 Series)	
Equipped with slide/tilt sunroof.	Produced from August 14, 2016 through September 14, 2016

SITUATION

Rattling noise from the vicinity of the overhead control center while driving, especially on rough roads.

CAUSE

Cowl-retaining rivet interfering with slide/tilt sunroof motor.



CORRECTION

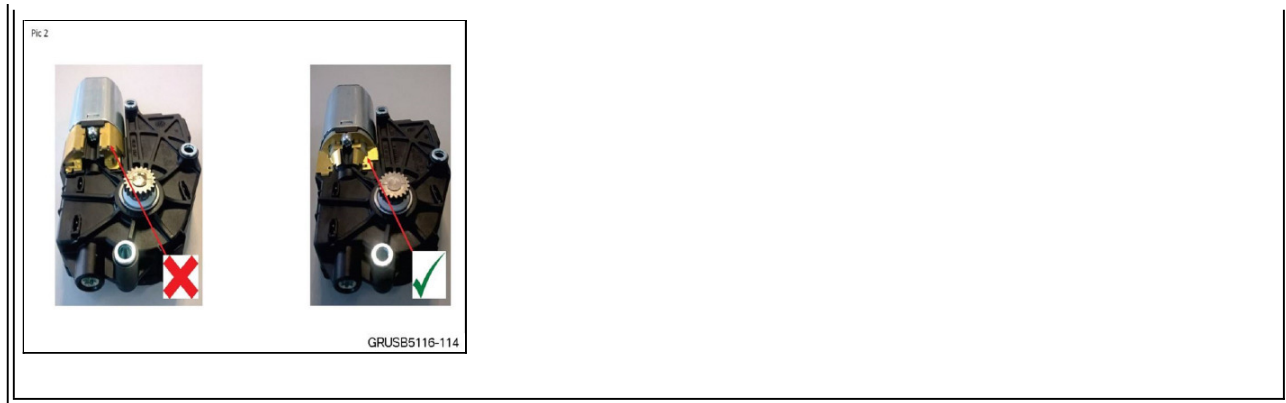
Replace motor, if necessary.

PROCEDURE

For conditions that are similar to the situation described:

1. Test drive vehicle to verify noise location.
2. Examine the slide/tilt motor.

Does the motor include a radio interference suppressor on it (shown on left below)?



YES – replace the motor following REP 67 61 510 “Drive with transmission for slide/tilt sunroof”



Note: Be very attentive to centering procedures advised in the repair instructions in order

to avoid misalignment, which would prevent complete sunroof closure and lead to other interference noises.

NO – perform further analysis/troubleshooting.

3. Road test again to verify noises have been eliminated.

PARTS INFORMATION

Part Number	Description	Quantity
Refer to EPC	Sunroof drive motor	1

WARRANTY INFORMATION

Covered under the terms of the BMW New Vehicle Limited Warranty for Passenger Cars and Light Trucks.

Defect Code:	6761013900	
Labor Operation:	Labor Allowance:	Description:
67 61 005	Refer to KSD2	Replacing drive with gear unit for sunroof operation (Main work)
Or:		
67 61 505	Refer to KSD2	Replacing drive with gear unit for sunroof operation (Plus work – Vehicle already in the workshop)
And, as necessary		

51 00 001	Work time (WT)	Work time to diagnose the noise source and to verify the issue described in this bulletin.
-----------	----------------	--

If you are using a Main labor code for another repair, use the Plus code labor operation 67 61 505 instead.

Work time labor operation code 51 00 001 is not considered a Main labor operation; however, it does require an individual punch time and an explanation on the repair order and in the claim comments section.

[Copyright ©2016 BMW of North America, Inc.]