

TECHNICAL INSTRUCTIONS

FOR

EMISSION RECALL G0M

EMISSION CONTROL INFORMATION LABEL

CERTAIN

2015 THROUGH 2016 MODEL YEAR PRIUS V

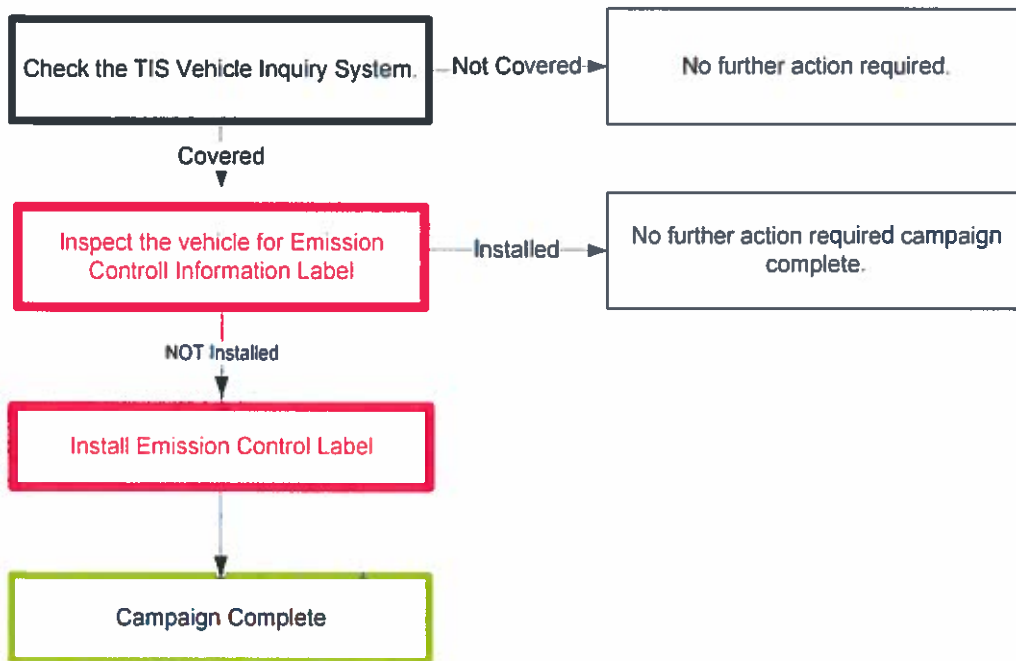
GUAM, HAWAII, PUERTO RICO AND SAIPAN ONLY

The repair quality of covered vehicles is extremely important to Toyota. All dealership technicians performing this repair are required to successfully complete the most current version of the E-Learning course "Safety Recall and Service Campaign Essentials". To ensure that all vehicles have the repair performed correctly, technicians performing this repair are required to currently hold at least one of the following certification levels:

- Certified Technician (Any specialty)
- Expert Technician (Any specialty)
- Master Technician
- Master Diagnostic Technician

Always check which technicians can perform the recall remedy by logging on to <https://www.uotdealerreports.com>. It is the dealership's responsibility to select technicians with the above certification level or greater to perform this repair. Carefully review your resources, the technician skill level, and ability before assigning technicians to this repair. It is important to consider technician days off and vacation schedules to ensure there are properly trained technicians available to perform this repair at all times.

I. OPERATION FLOW CHART



II. IDENTIFICATION OF AFFECTED VEHICLES

A. AFFECTED VEHICLES

- Check the TIS Vehicle Inquiry System to confirm the VIN is involved in this Non-Compliance Campaign, and that the campaign has not already been completed prior to dealer shipment or by another dealer.
- **TMS warranty will not reimburse dealers for repairs conducted on vehicles that are not affected or were completed by another dealer.**

III. PREPARATION

A. PARTS

The Emission Control Information Labels were sent to each Toyota distributor. If a dealer requires a label, contact your local Toyota distributor.

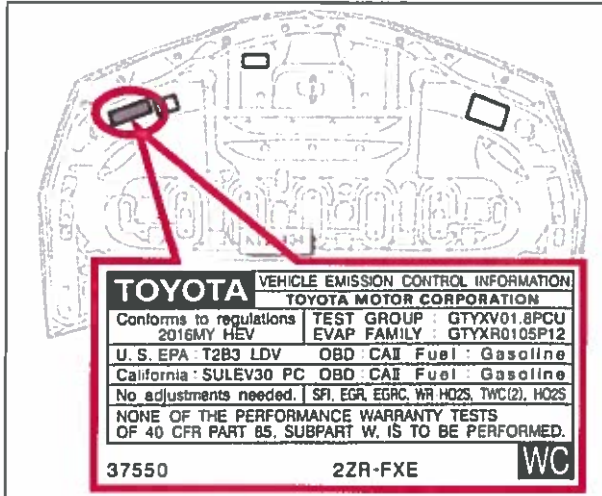
B. TOOLS

- Shop Rag

IV. BACKGROUND

The involved vehicles may not have had the required Emission Control Information Label applied to the underside of the engine hood during production. The involved vehicles **WERE ONLY DISTRIBUTED** to Guam, Hawaii, Puerto Rico, and Saipan.

V. WORK PROCEDURE

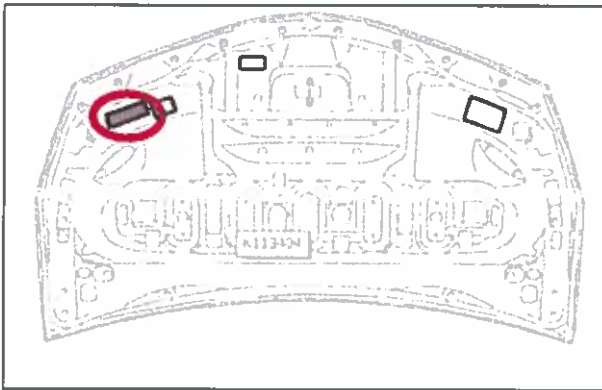


1. INSPECT FOR EMISSION CONTROL LABEL

- Unlatch and open the hood.
- Inspect the upper left hand corner to confirm if the emission control information label is installed.

Installed: Campaign Complete

NOT Installed: Go to Step 2



2. INSTALL EMISSION CONTROL INFORMATION LABEL

- Clean the surface of the hood using a soft towel to ensure the surface is clean.
- Neatly apply the Emission Control Information Label
- Confirm that the label is adhered and that there are no wrinkles in the label.
- Close and latch hood.

◀ VERIFY REPAIR QUALITY ▶

- Confirm that the hood surface has been cleaned
- Confirm the NEW label has been installed in the correct location
- If you have any question regarding this campaign, please contact your regional representative

